

T Y L E R

STEVEN HOLL CHOSEN AS ARCHITECT FOR NEW TYLER BUILDING

Temple University announced on December 11, 2003 the appointment of Steven Holl as the architect for the new Tyler School of Art building.

To be constructed on the corner of 12th and Norris Streets, the new Tyler facility will join Temple's Esther Boyer College of Music and Department of Dance and its School of Communications and Theater on the northeast corner of the campus in what Temple President David Adamany referred to as a "mini arts campus."

Steven Holl founded Steven Holl Architects (SHA) in New York City in 1976. SHA is a design-oriented office, with a current staff of 25. The firm has worked both nationally and overseas on a variety of public and private works. The office has extensive experience in the arts (including museum, gallery, and exhibition design), campus and educational facilities, and residential work.

SHA's recent projects include Simmons Hall at M.I.T, the Building of Art and Art History at the University of Iowa, and the Museum of Contemporary Art in Helsinki, Finland. His firm is currently working on the Nelson Atkins Museum in Kansas City due to open in 2004 and the Contemporary Art Exhibition Hall which is part of the China International Practical Exhibition of Architecture in Nanjing, China. The firm's recent awards include the 2003 National AIA Award for Design Excellence for Simmons Hall and the 2003 Honorary Fellow of the Royal Institute of British Architects.



Interior view of the College of Architecture and Landscape Architecture building at the University of Minnesota. 107,220 gross square feet renovation, 47,710 gross square feet addition. Opened in 2002.



The Museum of Contemporary Art in Helsinki, Finland. 130,000 gross square feet. Opened in 1998.

In July 2001 Time magazine named Steven Holl as America's Best Architect, for 'buildings that satisfy the spirit as well as the eye.'

Steven Holl is a tenured faculty member at Columbia University where he has taught since 1981. Other professional affiliations include NCARB, American Institute of Architects, American Association of Museums, Honorary Whitney Circle, Whitney Museum of American Art, and the International Honorary Committee, Viipuri Library, Alvar Aalto Foundation.

In July 2001 *Time* magazine named Steven Holl as America's Best Architect, for 'buildings that satisfy the spirit as well as the eye.' Most recently Steven Holl was honored by the Smithsonian Institution with the 2002 Cooper Hewitt National Design Award in Architecture.

Acting Dean Hester Stinnett said when she learned of the choice of architect, "We were fortunate that the State had three excellent architects to choose from but we believe that Steven Holl is the best fit for Tyler as his portfolio includes some of the most interesting art and educational facilities being built today. We look forward to working with his team to take our conceptual ideas about Tyler School of Art and relate them to three-dimensional models."

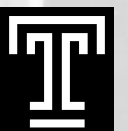
(article continues on page 2)

TYLER @ TEMPLE TIMELINE

- **December 2002**
Governor Edward G. Rendell approves allocation of \$58 million from the State of Pennsylvania for the Tyler School of Art relocation to Temple's Main Campus.

Temple announces commitment of \$7 million to project with \$10 million coming from private fundraising.
- **May 2003**
Temple University President David Adamany and Philadelphia Mayor John F. Street announce Temple University's acquisition of a site at 12th and Norris Streets for the relocation of Tyler School of Art.

The Redevelopment Authority of the City of Philadelphia approves the transfer of the land and the selection of Temple as the site's primary developer.
- **August 2003**
The State of Pennsylvania Department of General Services (DGS) begins accepting bids from architectural firms for the new Tyler building.
- **October 2003**
DGS creates short list of architects for new building that includes Michael Graves & Associates, Princeton, NJ; Carlos Jimenez Studio, Houston, TX; and Steven Holl Architects, NYC.
- **December 2003**
Temple announces choice of Steven Holl Architects partnering with Kelly/Maiello as architectural team for new Tyler School of Art building.



STEVEN HOLL CHOSEN AS TYLER'S ARCHITECT cont'd

Stinnett added, "Tyler School of Art has always been about building a community of artists and reaching out to other communities through the arts. The school's new location will provide a wealth of opportunity through our public art courses, arts in the community courses, and through our public programs to build a stronger curricular connection to local community groups and the arts community-at-large. We look forward to articulating our mission to the architects so that the building can physically manifest the spirit of Tyler School of Art."

Steven Holl Architects will be partnering with Kelly/Maiello in Philadelphia. Emanuel Kelly was a long-time faculty member in the Tyler Architecture Program. He formed Kelly/Maiello in 1976 with Vincent Maiello as an architectural practice with a commitment to excellence in design. The firm's goal is always to make good places for people.

2



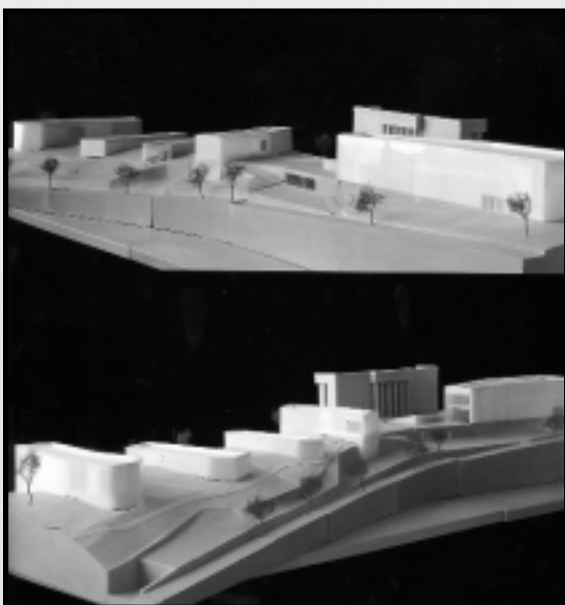
Model for the building of Art and Art History at the University of Iowa, Iowa City. 70,000 gross square feet. Under construction.

Kelly/Maiello has had a wide range of government, institutional, commercial, and private clients including the City of Philadelphia, the Pennsylvania Convention Center Authority, the School District of Philadelphia, the Philadelphia Housing Authority, U.S. General Services Administration, U.S. Postal Service, U.S. Navy, Pennsylvania Department of General Services, the University of Pennsylvania, Temple University, Washington College, Lincoln University, IBM Corporation, and the Marriott Corporation.

Of Kelly/Maiello, Stinnett said, "We are delighted that Kelly/Maiello is the partnering firm. Their work is outstanding and Manny Kelly has a keen understanding of the school's needs."

Kelly/Maiello's projects include new construction of the Franklin Learning Center School in Philadelphia, regional and branch libraries of the Free Library of Philadelphia, and the renovation of Temple University's Conwell Hall.

The partnership of Steven Holl Architects and Kelly/Maiello assures that Tyler's new facility will represent the 70-year history of community that is so vital to the Tyler School of Art experience. ■



Model for a proposed addition to the Nelson Atkins Museum in Kansas City, MO. 160,000 square feet with 500 square foot garage. In development.



Simmons Hall, M.I.T. 195,000 gross square feet. Opened in 2002.



Interior view of Simmons Hall, M.I.T.



College of Architecture and Landscape Architecture building at the University of Minnesota.

"We look forward to articulating our mission to the architects so that the building can physically manifest the spirit of Tyler School of Art."

HOLL NOTES

Experience in the Arts

Founded in New York City in 1976, Steven Holl Architects (SHA) has an extensive portfolio of work in the arts including museum, gallery, and exhibition design. SHA's recent projects include:

- Simmons Hall at M.I.T
- The Museum of Contemporary Art in Helsinki, Finland
- The Building of Art and Art History at The University of Iowa
- The Nelson Atkins Museum in Kansas City
- The Contemporary Art Exhibition hall which is part of the China International Practical Exhibition of Architecture in Nanjing, China

A Hands-on Educator

- Steven Holl has taught at Columbia University since 1981 where he is a tenured faculty member

Award Winning Designs

- The 2003 National AIA Award for Design Excellence for Simmons Hall
- 2003 Honorary Fellow of the Royal Institute of British Architects
- The 2002 Smithsonian Institution Cooper Hewitt National Design Award in Architecture

Professional Affiliations

- American Institute of Architects
- American Association of Museums
- Honorary Whitney Circle, Whitney Museum of American Art
- The International Honorary Committee, Viipuri Library, Alvar Aalto Foundation

America's Best Architect

- *Time* magazine named Steven Holl as America's Best Architect, for 'buildings that satisfy the spirit as well as the eye,' July 2001

DEAN'S MESSAGE

Dear Alumni/ae and Friends of Tyler,

The entire Tyler School of Art community is delighted with the partnership of Steven Holl Architects and Kelly/Maiello as the architectural team for the new Tyler building.

Holl's vast experience in designing for the arts and education, including Simmons Hall at M.I.T., the Nelson Atkins Museum of Art in Kansas City, and the School of Art and Art History at the University of Iowa, will serve Tyler very well as it takes on this historic relocation to Temple's Main Campus.

This is a time full of promise for Tyler. Tyler @ Temple will ensure that the next generation of Tyler students will have access to all of the resources of Temple University, including career services, extra-curricular activities, and classes in dance, theater, film, business, education, liberal arts, and the sciences.

We will bring our commitment to students, our emphasis on personal attention, our dedicated faculty and staff, and the spirit that all of our students, past and present, have experienced on the Elkins Park campus with us as we embark on our future on Temple's Main Campus.

We look forward to your continued support as we begin the process of creating the best building for the best program.

Sincerely,



Hester Stinnett
Acting Dean

ALUMNI ASSOCIATION PRESIDENT'S MESSAGE

Dear Alumni/ae,

We welcome architect Steven Holl to design Tyler's new facility on Temple's Main Campus.

The new building will be located between Norris and Diamond streets and Marvine and 12th streets, across from Temple's Esther Boyer College of Music. This state-of-the-art facility will feature 255,000 gross square feet of studio, classroom and gallery spaces, which nearly doubles the amount of space currently available at the Elkins Park campus.

The building is a \$75 million project with \$58 million coming from the State of Pennsylvania, \$7 million from Temple University, and \$10 million to be raised in outside funding.

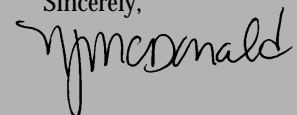
In anticipation of the relocation, the faculty has been engaged in a series of discussions which will provide the conceptual framework for curriculum renewal and a strategic plan that will guide Tyler through the historic years ahead.

Tyler remains committed to retaining the current size of the school, the close working relationship between faculty and students, and the school's spirit of community. Tyler is further committed to maintaining its highly competitive and portfolio-based admissions process for the BFA/MFA degrees and the high GPA requirements for entry into its other degree programs.

Tyler also recognizes that art schools in the 21st century will be significantly different from existing models and that the relocation of the Tyler BFA and MFA programs offers the opportunity to not only be a great art school, but to become respected for innovating a new art school model.

We are confident that Steven Holl will be able to translate this vision for Tyler School of Art into an architecturally significant building that will enhance Temple's Main Campus and the City of Philadelphia.

Sincerely,



Nancy McDonald
President, Tyler Alumni Association

TYLER PROFILE

MORE THAN ONE WAY HOME



Steve Cousart ('77), right.
GoodBoy from *Art Unleashed*, above.

"Tyler alumni have won Pew Fellowships in the Arts, have had exhibitions at all of the major museums in the country, have painted presidential portraits, have installed public art works at locations such as the Renwick Gallery of the Smithsonian Institution, are architects, art teachers, fabricators, and have changed our land- and city-scapes through award winning designs.

But Tyler graduates are also vice presidents at major corporations, writers, lawyers, doctors, scientists, marketing specialists, business entrepreneurs, and many other professions where a background in creative thinking is useful. In short, Tyler graduates are well grounded and well prepared to use their art background to do just about anything.

And despite the fact that art making may not be front and center in our daily lives, Tyler graduates often find ways back to their original passion.

Take Steve Cousart for example. He graduated from Tyler in 1977 with a BFA in Printmaking. He moved to Texas where he worked in furniture display and then for a developer and in real estate. Wanting to get back to Philadelphia, he joined the national commercial real estate firm Grubb and Ellis as a senior vice president before landing his current position as First Vice President of CB Richard Ellis Real Estate Services (formerly Insignia ESG).

Steve's background in art led him to become involved with Philadelphia's Arts and Business Council's Business Volunteers for the Arts program. This program matches individuals in the corporate community with non-profit organizations to help staff work on particular projects or particular issues.

Steve was matched with the Main Line Art Center where he helped coordinate last year's public art exhibition, *Art Unleashed*, and related benefit auction. Modeled on similar exhibitions across the country, the two-year project created 50 whimsically decorated, fiberglass sculptures of dogs which took up residence in highly visible locales ranging from a bus stop to a church lawn. The dogs were eventually auctioned at a gala dinner that Steve co-chaired.

Re-connecting to the arts has started Steve thinking about his days at Tyler. He has fond memories of attending the Rome program. Two faculty members at Tyler were highly influential over him—Chuck Schmidt and Stan Zagorski. In fact, he still hangs his self-portrait that he did in Chuck's class in his home, a daily reminder of where he began his career.

We encourage alumni to share with us their art, non-art, and art-related stories as we appreciate and celebrate all of the ways that our graduates impact society as a whole.



THE 2002-2003 HONOR ROLL

We thank the alumni, parents, faculty, staff, companies, foundations, government agencies and friends that supported Tyler School of Art during 2002 – 2003. With your support, Tyler celebrated its best philanthropic year in its history.

To make a contribution to Tyler, please use the coupon on page 11. All gifts made before June 30, 2004, will be listed in the fall 2004 issue of *Gestures*. All contributors of \$1,000+ will be invited to celebrate at Temple University's Conwell Recognition event. Remember, you can use a credit card to make a contribution to Tyler which is a great way to build frequent flyer miles!

For more information about philanthropy at Tyler, please phone Jenifer Trachtman at 215-782-2716 or email her at jenifer@temple.edu.

Annual Scholarships

Our ability to offer scholarships allows us to recruit and retain talented and motivated students. We do this, in part, through contributions to the Tyler Annual Fund (yes, your annual dollars big and small help in significant ways!). Larger donors fund more targeted scholarships such as the annual scholarship given to an architecture student which comes from Joseph Powell (BArch '85). A generous contribution from The Gilroy Roberts Foundation allowed us to give scholarships to these students: Tiffany Bennett, Meryl Candor, Miles Kalbach, Kristen Neville, Matthew Rose, Christopher Stackhouse, Nicole Trunk, and Eric Yeager.

Building the Endowment

Gifts to Tyler's endowment allow us to plan for the future and help you to establish a legacy at Tyler. New last year was the Jack Malis Memorial Scholarship Fund. We send a very warm thanks to Kathy Malis Schenkman who began the Fund, in memory of her brother, Jack Malis (BFA '82 Glass). The Fund will grow to support an annual scholarship for Glass majors and will live in perpetuity at Tyler. Last year, the Jack Malis Award was given to Michael Gnad.



Jack Malis (BFA Glass '82) at work in his studio.

Over the last two years, gifts by will from the Estate of Inga Rice allowed Tyler to begin an endowment of \$200,000 for public programming including the Tyler Galleries and our community-based presenting program, Art Works in Different Places.

The Dorothy Ward Endowed Fund supported a scholarship for Anna Diccico. The Herman Gundersheimer Fund for Academic Excellence, which last year supported graduation awards for

Miyako Taguchi and Kate Stern, grew from an award fund into a scholarship fund. The Kristin Huggins Fund, which grows each year through contributions raised by the family through a golf outing, has also grown to be a scholarship fund. Last year, the fund provided an award to Mario Zucca.

A generous gift by will from the Esther and Harry Rosen Estate is being used to support student scholarships. Last year, students benefiting from the fund included: Ruby Amanze, Lester Blackmon, Jennifer McTague, Hee Jung Park, and Tiffany Tavares.

Graduation awards are an important way to send off our seniors into the world. Endowed Graduation Award Funds establish a tradition for making awards available on an annual basis. Alicia McCarthy received the Alec Abels Award in Painting. Julie Horwitz received the Ann and Jack Moskovitz Art Education Award.

WHAT HAPPENS TO YOUR CONTRIBUTION?

Many of you want to know where your dollars go once they are given to Tyler. Here we offer profiles of how your philanthropy nourishes the students and faculty at Tyler School of Art each and every day.

Jodie Pellish received the Essie Baron Award. Gabriel Fredericks received the Wayne Becker Award. Sarah Arva and Maanda Black received the Billikopf Awards. Sabrina Lessard received the Boris Blai Award. Christina Renfer and Jodie Pellish received the Jane D. Bonelli Art Education Awards. Alicia Arnold received the Carmela Corso Prize. Christina Renfer and Ling-An Lu received the Edith Weil Hecht Awards. Eva Wylie received the Lester and Violet Hecht Award. Omneya Hennawi and Seth Schriftman received the Robert and Richard Hecht Awards. Jodie Pellish, Sara English, Andrew Kozlowski, and Shino Urano received the Allen Koss Memorial Portfolio Awards. Sabrina Lessard received the Bertha Lowenberg Prize. Tammi Melching received the Nathan Margolis Award. Paul Consigny received the Senior Painting Award provided by Lisa Yuskavage and Matvey Levenstein. Sigita Stravenskaite received the Raphael Sabatini Award in Printmaking. Cameron Gainer received the Rochelle Toner Award. Melissa Hassey received the Bruce Silver Outstanding Achievement Award. Jessica Grisafi received the Rudolf Staffel Award in Ceramics.

New Technologies

We thank The Tiffany & Co. Foundation for a two-year grant in the amount of \$120,000 that has allowed the Metals/Jewelry/CAD-CAM Area to make important technological upgrades. The grant supports a graduate assistant who is conducting research on new state-of-the-art rapid prototyping equipment. The grant recognizes the faculty's long-time interest in researching the ways in which technology can be layered on top of the time honored techniques of metalsmithing. One of the outcomes of this grant is that our students will be able to spend more time in the studio engaged in the creative process and less time and resources having molds and models fabricated by service bureaus. This year's Tiffany & Co. Graduate Fellow is Julia Korony who presented the work created with this grant at Temple's annual Conwell Society Recognition event this past October.

We want to highlight a special gift from David Haas (MFA '88 Photography). David has made a three-year pledge of \$75,000 to the Photography Area at Tyler. This funding has been vital to our ability to add digital processes to the Photography curriculum. Funds have allowed us to purchase much needed equipment giving Photography students many more resources and formats for creation of their work.

Guest Speakers

Each year, the architectural community comes out to support Tyler's Annual PSFS Lecture on Modern Architecture. The lecture takes place in November at the Loews PSFS Hotel at 12th and Market Streets. Last year, the event featured the architect Peter Eisenman and our donors allowed us to expand the program to include an exhibition of his firm's work at the Temple Gallery.

Your support allows Tyler to bring in special guests each year to speak to our graduates at their convocation ceremony. Last May we were pleased to host Rochelle Toner, Dean Emeritus.

Annual Graduation Awards

Julia Korony was the recipient of the annual purchase prize provided by Rohm & Haas Company. Jamie Lyn Becker received the Alumni Service Award. Brita D'Agostino, Ryan Beck and Tadashi Moriyama received the Art and Art Education Achievement Awards. Christine Hennessy and Robert McGowan received the Faculty Awards in Art and Art Education. Elizabeth Pozzi received the Del Val Potters Award. Sarah Weaver received the Faculty Award in Art History. Jennifer Sholtis received the Faculty Award in Metals/Jewelry/CAD-CAM. Laura Prieto-Velasco received the Frei and Borel Student Award in Metals/Jewelry/CAD-CAM. Zach Puchowitz and Jeremy Unterman received the East Bay Batch and Color Glass Awards. Peter Ranieri received the Rio Grande Student Award in Metals/Jewelry/CAD-CAM. Brian Manger, Suzanne Fee, Cecilia Bursell, Kevin McLaughlin, and Anthony Serge received the Graphic Design Alumni Awards supported by Ted Mininni, Robert Warkulwiz, Judy Munroe, and Hallmark. Kevin McLaughlin and Bomina Kim received the Graphic and Interactive Design Awards supported by Craig Bernhardt. Anthony Serge received the Power Design Award provided by Steve Delaney. Julia Korony received the T.B. Hagstoz Student Awards in Metals/Jewelry/CAD-CAM. Brian Magner received the Kalnin Graphics Award. Elizabeth Miller received the Philadelphia Watercolor Club Award. Freda Maletsky and Julie Rill received the Plastic Club Awards. Danny Alvarez received the Print Center Award. Zachary Lindenberger received the Faculty Award in Printmaking. Nicholl Strouse received the Photography Faculty Award. Shaun Jordan received the Vivian Rosenberg Award. Mary Deevy received the Sculpture Project Award. Craig Hill and Elena Holmes received the Taws Artist Materials Award. Robert Haigh, Sandra Knoll and Cecilia Bursell received the Utrecht Art Supplies Award. Ambria Cone received the Webbcam LLC Award.

Creating a Tradition of Philanthropy

As your philanthropy is important and well appreciated here at Tyler, our own students are learning the value of giving back. Last year, students in the Ceramics and Glass Area donated \$2,000 to the Families of Freedom Scholarship Fund at the Citizens' Scholarship Foundation of America. The funds were raised during the Annual Craft Sale at Tyler and the charity was chosen to support the unmet needs of families in the area of the Twin Towers.

Creative Ways to Give

There are many ways to give to Tyler. Last spring, alumnus John Stango (BFA '81) opened a gallery in Philadelphia's Manayunk section. For the gala opening reception, he earmarked 10% of proceeds to benefit Tyler School of Art. The event was wall to wall people and Tyler received a significant contribution as a result.

CREATING YOUR LEGACY AT TYLER

Are you looking for reliable income? Would you like to make a significant gift to Tyler School of Art and generate income for your own use? Interested in earning up to 11.3% interest on your investment? If you are looking for a creative way to establish your legacy at Tyler School of Art, you may want to consider a charitable gift annuity. In exchange for your gift of cash or securities (as little as \$5,000), Tyler will provide you with a guaranteed, lifelong income—a portion of which is tax free. And, you will secure an immediate tax deduction for the remainder of your gift.

Today's low interest rates and uncertain stock market are just two reasons to consider a CGA or deferred CGA with Tyler. A third reason: Tyler students, faculty and programs will ultimately benefit from your charitable intent.

More facts to consider:

* CGAs of appropriate size will establish named endowed funds at Tyler School of Art—in other words, funds that will link your name with Tyler in perpetuity.

* Funding your CGA with appreciated stock will remove it from your taxable estate and completely avoids capital gains tax that you would otherwise incur if you chose to sell it.

SINGLE-LIFE ANNUITY		TWO-LIFE ANNUITY	
AGE	RATE	AGE	RATE
60	5.7%	60 & 60	5.4%
65	6.0%	65 & 65	5.6%
70	6.5%	70 & 70	5.9%
75	7.1%	75 & 75	6.3%
80	8.0%	80 & 80	6.9%
85	9.5%	85 & 85	7.9%
90+	11.3%	90 & 90	9.3%

For more information on Charitable Gift Annuities or other creative ways to give to Tyler, please call Jenifer Trachtman at 215-782-2716 or send email to jenifer@temple.edu.

CLASS OF '39
Robert S. Mitchell

CLASS OF '40
Helen S. Cohen

CLASS OF '42
Aileen Hart Dannenberg

CLASS OF '43
Ruth C. Tuller**

CLASS OF '44
Catherine B. Torre***

CLASS OF '45
Shirley G. Poplin
Dr. Bette Itkis Zipin

CLASS OF '47
Frances White Keebler

CLASS OF '48
Paul F. Keene, Jr.*
Robert W. Schwarzwald
Aaron A. Shikler*

CLASS OF '49
Carolyn Fiedler-Alber*
Beth Synnestvedt Johns***

CLASS OF '50
Oliver Zarah Balf
Harriet L. Cohn
Robert Arthur Fluhr
Frank C. Gaylord
Mr. and Mrs. Douglas Lee McIvain*
Harold Mesibov

CLASS OF '51
Jewell E. Gleason*****
Lucille A. Grossman
Rose G. Hausman
Margot G. Shackelford

CLASS OF '52
Cecily Kahn Cain
Joan Leff Miller

CLASS OF '53
Neal Blank
Donald Anders Davis*
Jacob Davis

CLASS OF '54
Louise G. Leech*
Herbert Mandel
Dr. Joan Webster Price

CLASS OF '55
Gail Leff Raab

CLASS OF '56
Myrna M. Forster
Mildred A. Herscher
Francis X. Jackson*
Gordon Robert Rand
James R. Ruban
Elinor A. Seaman
Harry J. Walker

CLASS OF '57
Anne J. Barney
Marian A. Canfield
Anselene Marie Morris**

CLASS OF '58
Jere E. Brady
George Douris
Mr. and Mrs. Bayne B. Isaacson*
Michael Kunceovich*
Robert C. Moore
Jo Ann Brunner Gecsy Sanders*
Cole Schenk*
Cynthia Wilkinson
Paula Colton Winokur

CLASS OF '59
M. Louise Davis
Dino Fabrizio
Jean Harding Grim
Dr. Michael Paul Marcuse

CLASS OF '60
Louise R. Cades**
James L. Gaitther
Dan Meinyk*
Dr. Gene Wilkins

CLASS OF '61
G. Thomas Schafer
Henrietta H. Thomas

CLASS OF '62
Loretta C. Duckworth*
Lynne R. Feraman*
John A. Ross
S. Steven Verencin
Jeanie C. Wing

CLASS OF '63
Mary Bereska*
Roslyn Rickles Brenner
Louise Fishman**
Karen S. Hack*
Annette B. Needle
Frederick S. Osborne, Jr.
Ernest J. Sakser

CLASS OF '64
Ronnie Usian Buerger*
Susan Segal Kapel
Marguerite E. Matthews
Charlotte Ellen Moss

CLASS OF '65
Jane D. Bonelli*
Bernice R. Horn
Marylyn Katzman Meyerson
Ruth Agard Monsky
Dr. Mary Anne M. Morgan*
Dr. Sylvia D. Plutchok
Susan Gail Wilson

CLASS OF '66
Richard A. Bellsey
Frederick S. Bock
Richard H. Kunin
Vicky Lieber
Irma Ostroff

CLASS OF '67
Alma Neas Nelson Cassel
Fay Heim-Kempton
Roberta S. Langman
Jacqueline Johnson Sissoko*

CLASS OF '68
Judith Gallagher Becker
Loretta L. Edge
Lynda Katz Elias
Lon M. Fluman, Sr.
Jonathan Jager
Dr. Joan M. Marter
Peter Rudolph*
Dr. Jerry Ray Smith
James R. Tribe*
Jeffrey Wasserman

CLASS OF '69
Donald K. Emminger
Marcia G. Feinstein
Maelee Thomson Foster
Arlene G. Milgram
Charlotte A. Schatz
Marilyn W. Simon

CLASS OF '70
Sherry Haas Bendler
Catherine C. Green
Barbara H. Kanefsky
William Conrad Klein, Jr.
Marlene E. Miller, Professor Emeritus
Larry Dale Morris
Janet B. Powell
Susan C. Smith

CLASS OF '71
Beatrice C. Batt
Maurice K. DeTurck, III*
Ava Ciliberti Eckhardt
William R. Gerbracht
Lynne Dian Gulezian*
Stephen L. Keister
John R. Sebastian, Sr.
A. Thomas Ullom
Anne Meyers Vaccaro
Eleanor H. Wolff*

CLASS OF '72
Harry W. Bartnick
Alice Benjamin
Jan T. Kennedy
Frances W. Kratzok
Deborah E. Regan
Nan S. Smolow
Phyllis I. Thompson

CLASS OF '73
Victor P. Arata
April Foster
Richard John Frank
Josie Gearhart
Rhoda Psaty Holzer*
Nancy Zemetkin LaPolla
Rhoda W. Lavinsky
James O. Loney
John Ney Michel
Evelyn Lenore Scott
Robert P. Stanley, Jr.*

CLASS OF '74
Carolyn P. Alexander
Penny R. Bernick*
Linda Colman
Vincent M. Falsetta
Patricia Celenza Gamble
Rosanna Hoefling
Barbara Jayne Kozero
Jane Eileen McNichol*
Margaret Phillips Richardson
Val Pomerantz Rossman*
Adrian R. Tio*

CLASS OF '75
Wayne M. Hammer
Susan L. Iverson*
Anthony Lagrossa
Joyce Sherman
Daniel Frese Sneberger
Jeanette Kay Topar

CLASS OF '76
Steven D. Bailey
Karen W. Boyd
Marcie Feldman-Gottlieb
Steven F. Foote
Anthony L. Goodwin
Cyd Kilbey Gorman
Meredith M. Green
Gregg E. Jones
Kurt J. Kreitler
Robert M. Loeffler
Peggy A. Loeffler
Frank B. Marchese
Anita F. McGinn-Natali*
Richard Raiselis*
Candi Haas Simmons
Martha F. Walker

CLASS OF '77
David L. Balinski
Diane K. Becotte
Charles R. Burwell
Devi Moore Chancey
Susan T. Corbin
Reverend Beverly Latif Duncan*
Michael L. Garrity
Kevin J. Harrington
Peter H. Harsen
Eva Kwong*
Lisa Learner-Wagner
Connie Quigg McGinley
Quinton Sanders
M. Jane Stock
Mary-Chilton English Vanhees
Valerie A. Wunder

CLASS OF '78
Polly E. Apfelbaum
Jack Bryant
Jill Croft*
Carol G. Daniels
Laure M. Drogoul
Robert N. Flynt*
Jean M. Foos
Helen E. Grosch
Joanne D. Isaac
Bruce L. Klastorin
David A. Landry*
Abigail M. Lederman
John D. Owens
Stephen L. Pentak*
Barbara Jack Pflugst
Bruce W. Pollock
Annette Marie Rykhus
Corinne Dondero West*

CLASS OF '79
Curtis D. Biehn*
Fred H. Block
Laura Horn Borden
Alex J. Brand
Elizabeth M. Burkhauser
Gregory P. Chantz
Paula Colley
Ellen J. Cooper
Terry M. Dagradi
Mary A. Dajnak
Bonnie J. Forbes
Stuart L. Friedberg
Lorraine T. Gaasche*
Keith H. Harris
Faith E. Kortrey
Jeffrey Propper
Robert P. Sherwood
Anthony and Christine Wiker***
Dale R. Yoder

CLASS OF '80
Sharon B. Brown
Sandra O. Chamberlin
Karen Clavin
Gail L. Gossler
Lynne A. Horoschak
Martha J. Horvay
Patricia E. Hough
Phillip F. Jordan
Caren Rubinson Lipkin*
Sarah Ann Lovett
Kay Moon
Linda L. Moran
Kitty J. Simpson
Martha McGeary Snider*
Pamela J. Whitlinger

CLASS OF '81
Anonymous
William S. Apfelbaum
Theresa C. Barker
David J. Barici
Kyra S. Bloom
Robert J. Buss, II
Norman B. Ed
Francie M. Galante
Mary R. Gilman
Kenneth F. Jacobs
Dolores M. Kent
Denise Aciri McCarvey
Elizabeth B. O'Donoghue
Denise Winterfield Pollack
Mark Rosenbaum
John Stango*

CLASS OF '82
Olha M. Bilynsky
Kent Cooper
Donna Lynn Decaul
Patricia A. Dougherty
Ann B. Feltelson
Antonio P. Fernandez
Kathleen Scott Gallagher
Shelley A. Harris*
Sharon Bloomfield Hicks
Andrea E. Keating
Casimir J. Kowalski
Steven T. Lawrey, AIA
Joyce Lenhardt**
Scott L. Malin
Kathleen Fratarano Ott
Robert Z. Shuman, Jr.**
Mark J. Topetcher*

CLASS OF '83
Susan M. Altman*
Donna Battaglia Brady
Diane Berube-Catanzaro
Lucy A. Clink
Antony M. Dew*
Margret R. Duko
Toby L. Greenberg
Sharon E. Killough
Ilene Maddalena
Jeffrey W. Morin
Shelly A. Neri
Mark E. Palermo
Kevin M. Zilis
Navarath Ratanakanaka
Dr. Thomas D. Ritenbaugh
Anthony L. Rosowski
George Michael Schwab
Cynthia Havenson Veloric

CLASS OF '84
Cheselyn Amato
Jeanne K. Brody
Nicholas F. Gonzalez
Teresa L. Jaynes
Marilyn E. Lavins
Eben A. Lenz
Mary M. Meszaros
Joseph P. Naujokas*
James R. Rose
Catherine K. Wheelhouse
Diane Wolfe

CLASS OF '85
Steven E. Baris
Collin L. Beers
Joseph P. Bridy
Brigham A. DiMick
Leah Douglas*
Margot A. Grisar

CLASS OF '86
Charles B. Crumlich
Theresa A. Dellaquila
Beth Ann Judge
Robert P. Kellerman
Curtis D. Biehn*
Fred H. Block
Barbara Spirit Messina
Suzanne B. Naylor
Michael J. O'Brien
Mary K. Ray
Jill Saull
Glenn Sidney Smith
Joseph Turnowchyk*
Judith B. Viner
Carolyn Widias

CLASS OF '87
Pierre A. deVitry
Dianne E. Dillman
John A. Dinuovo
Joseph T. Dunn
Suzanne Demott Gaadt
Laura L. Keyser
Patricia S. Lima
Joseph M. Lombardi*
Mark Parker
Paul D. Santoleri
Romeo J. Simone
Jerry C. Smith
Nancy E. Stroud
Thomas J. Woods, Jr

CLASS OF '88
Kenneth A. Adams
Stephen L. Allison
Marcia L. Bruno
Michael G. Buczala*
Matthew C. Chansky
Marcia A. Cooper
Beverly A. Coulson*
Phillip D. Donovan
Doris M. Heginbotham
Carol P. Hodson
David F. Keefer
Ringo W. Leung
Theresa E. Rhinevault, Jr.
Curt R. Rohrer
Gloria Rowan
David E. Salama
Elizabeth A. Sharp
David M. Sorgman
Frank B. Zampetti

CLASS OF '89
Lynn B. Berkowitz
Shelby A. Fronzaglia*
Mark C. Johnson
Peggy S. Musser
Robert A. Lipscomb
Dorothy L. Roschen
Adrienne C. Stalek**
Robert J. Stolzer
Harry Wright

CLASS OF '90
Fumio Adachi***
David K. Afsah-Mohallate
James A. Bozzini
Thomas D. Carabasi
Diane M. Frank
Susan C. Kell
Laura S. Parnes
Patrick J. Sinel
Rebecca L. Zaslów*

CLASS OF '91
Stacey M. Carter*
Renee Williams Erwin
Angela K. Griffin
Michael J. Gruthusen*
Jeanne C. Pond*
Marlie Robbins
Anna E. Scott
Martha Terry

CLASS OF '92
A. Charlotte Cannal
Juliette E. Cook
Karen Butler Kress
Timothy E. O'gline
Amy L. Thrush-Dreves

CLASS OF '93
Barbara A. Botting
Amy T. Carpenter
Susan L. Feenan
Jenne Mayne
Jamie L. Mowrey
Noah J. Schwartz

CLASS OF '94
Chanelle Anderson*
Stephanie Coomber Broncano
Robin L. Conover
Joseph F. Guido
Timothy Hogan
Jose R. Rodriguez
Mark A. Rolfs
Valerie A. Sagheddu
Jennifer W. Starkweather
Carol A. Stirtton-Broad*
Ryan F. Single

CLASS OF '95
Deborah J. Enea
Anna Heald
Seth Lumor
Tifanee R. Taylor
Elaine C. Todd

CLASS OF '96
Erika M. Burkowski
Kathryn A. Dominguez*
Salvatore C. Farruggia
Christine M. Keleshian
Dawn M. Leary
Susan M. Mober
Mary Beth Moore

CLASS OF '97
Elizabeth Ashby
Mark K. Buckwalter
David M. Coyle
Samuel Fritch
Adina S. Gratz
Francis W. Hoerber
Charles F. Pearson, III
Douglas C. Phillips
Thomas E. Sarver, Jr
Julie D. Siftar

CLASS OF '98
Debra Breslin
Adrian M. Esparragoza*
Heidi J. Galassini
Kathleen M. Hong
Kenneth W. Lough
Ayanah A. Moor
Adam C. Nebhut
Kathleen A. Peters
Nicole M. Price
Mindy R. Yastrebinatz

CLASS OF '99
Craig S. Baker
Natasha M. Hill
William R. Talenti

CLASS OF 2000
Sean C. Caldwell
Anthony Galati
Dr. Cheryl Krause Knight
Sonja C. Kurtz*
Natasha T. Pestich
Rebecca Poulson

CLASS OF 2001
Tina Salvesen

CLASS OF 2002
Leslie H. Atik
Denise Barry
Heather Fenton
Jeff A. Frese*
Julien M. Libersat
Heidi M. Muller
William J. Patterson
Pamela L. Raines
Dr. Ian F. Versteegen

CLASS OF 2003
Jaime N. Cook
Jack A. Messier
Andrew Pletcher

CORPORATIONS
Armstrong World Industries,
Incorporated**
Ballinger***
Bernhardt Fudyma Design*
Buell Kratzer Powell Ltd.***
Design Force*
East Bay Batch*
Francis Cauffman Foley & Hoffmann***
Hallmark Corporate Foundation****
Hershey Foods Corporation**
Ira Ono Design Inc.
Jacobs Engineering Group Inc.***
Jacobs/Wyper Architects*
Kalnin Graphics, Inc.
Kelly/Maiello Inc.***
Kimmel Bogrette Architecture
& Site, Inc.****
M2 Systems****
Mainly Stango*
Marhefka & Malofiy Drywall, Inc.****
Martin Harris Studio, Inc.*
MBNA America Bank, N.A.
Munroe Creative Partners*
PJM Interconnection, L.L.C.
PowerDesign*
Rockafellow & Associates***
Rohm and Haas Company***
Stango International***
The Hillier Group, Inc.***
Tiffany & Co. Foundation*****
Turner Construction Company***
Venturi, Scott Brown and
Associates, Inc.***
Warkuhwitz Design Associates, Inc.*
Wyeth-Ayerst Pharmaceuticals

ESTATE GIFTS
Estate of Inga Rice*****

FACULTY/STAFF
Gini Alvord
Mary Ivy Bayard*
Michael Beotte
Frank Bramblett*
Carmina Cianciulli*
Cynthia Manning Crosby*
Daniel F. Dallmann
Elizabeth Delullo
Albert J. Finestone, M.D.*
Dr. and Herman S. Gundersheimer***
Marcia B. Hall
Marilyn M. Holsing
Nicholas W. Kripal*
John Henry MacDonald*
Martha Madigan
Jo-Anna J. Moore
Karen J. O'Donnell-Emory
James A. Peightel, M.D.
Dorothy Kallio Pieringer*
Dr. James H. Stayman
Concetta M. Stewart, Ph.D.*
Hester A. Stinnett***
Rochelle A. Toner***
Jennifer Trachtman*
John L. Wade
Tracy Cooper Wardell

FOUNDATIONS
The Joseph Gluck Foundation***
Stockton Rush Bartol Foundation ****
Roberts Charitable Foundation****
Phoebe W. Haas Charitable Trust*****
Malcolm Hewitt Wiener
Foundation*****
The Institute for Aegean Prehistory*****

FRIENDS
Anonymous Donors*
Howard C. Becker*
Alfred Bogdanoff*
David & Olga Borker*
Colleen Bornmueller*
Donna Corbin
Mitchel S. Finkelstein*
Tranda S. Fischelis*
Michael J. Goldman*
Jacqueline M. Greenwell
Nancy Robinson Imbriglia
Robyn L. Jacobs
Aravind K. Joshi*
Carl Kaplan*
Karen M. Keener*
John C. Knowles***
Carol Kods***
Jane Korman*
David Stern Loeb, Jr.*
Karen L. Lomigora
Donald and Anne Martin
Sarah McEaney
David P. McShane
Anne D'Harcourt Rishel
Carleton Schwager
Angela Schwartz
Kathy Malis Schenkman****
Judith M. Shapiro
Joy Stember
Bayard T. and Frances E. Storey
Sophie S. Springer
Christopher J. Vecchio, PhD
Joseph W. Waz, Jr.
David Wice, Esq.**
George L. Wolff*
Neil E. Wummer*

GOVERNMENT AGENCIES
National Endowment for the Arts*****
Pennsylvania Council on the Arts*****
Philadelphia Cultural Fund****

OTHER GROUPS
Craft Association of Tyler Students**
Congregation Beth Shalom
Philadelphia Water Color Society*
Temple University General Alumni
Association****

PARENTS
Romani Abney
Lori Andrews
Mr. and Mrs. Ralph A. Antonelli*
Carla Arnold
David B. Ballard
Hellen Ballak
Edith Sayen Ban*
Judith Barry
Bruce Bennett
Barbra Beuke
Mary Ellen Billups
Katrinia Blackmon
Dr. Beatrice K. Blasdel
Terrill Blew
Carol Bobrek
Judith J. Bohot
Zenie Bohl
Joseph Bono
Verlean Boney
Denise Boyle
Grace Breuer
Arlene Brickman
George Briscella
Maureen De Brito
Beth Kaylor Brunner
James Bus
Pandora L. Busfield
Deany Cameron
Charles Canali
Margaret A. Capobianco
Richard Capriotti
James R. Cardell*
Rosa Cariola
Charles Catherwood
Ana C. Chan*
Martine Chauvet
Beverly Christian
Gary Christie
Patricia Chrostowski
Dominic A. Colazzo*
Kathleen M. Comly
Judy Conlin
Teresa R. Conn
Rosemary C. Cooper
Joseph & Lorraine Czekaj
Theresa Daly
Susan E. Daniel
Anita Delquadro
Felix Demico
Susan DiGuseppe
Nancy DiPalo
Lea Doiron*
Bernadette Druckenmiller
Gregory Duke
Janice Dusik
Diana Harmon Edel
Sarah England
Roxann Fairchild
Robert Fee
Donna Fisher
Robert A. Fisher
Peter Forrester
Colleen Frayne
Rose Marie Frederick
Alice Fritch
John Gallia
Nigel Gayle
Jeremy Gaynor
Thomas Gilboy
Susan Grant
Terry Hagen
Shawn Harris
Paulette Hassey

FOUNDATIONS
The Joseph Gluck Foundation***
Stockton Rush Bartol Foundation ****
Roberts Charitable Foundation****
Phoebe W. Haas Charitable Trust*****
Malcolm Hewitt Wiener
Foundation*****
The Institute for Aegean Prehistory*****

FRIENDS
Anonymous Donors*
Howard C. Becker*
Alfred Bogdanoff*
David & Olga Borker*
Colleen Bornmueller*
Donna Corbin
Mitchel S. Finkelstein*
Tranda S. Fischelis*
Michael J. Goldman*
Jacqueline M. Greenwell
Nancy Robinson Imbriglia
Robyn L. Jacobs
Aravind K. Joshi*
Carl Kaplan*
Karen M. Keener*
John C. Knowles***
Carol Kods***
Jane Korman*
David Stern Loeb, Jr.*
Karen L. Lomigora
Donald and Anne Martin
Sarah McEaney
David P. McShane
Anne D'Harcourt Rishel
Carleton Schwager
Angela Schwartz
Kathy Malis Schenkman****
Judith M. Shapiro
Joy Stember
Bayard T. and Frances E. Storey
Sophie S. Springer
Christopher J. Vecchio, PhD
Joseph W. Waz, Jr.
David Wice, Esq.**
George L. Wolff*
Neil E. Wummer*

GOVERNMENT AGENCIES
National Endowment for the Arts*****
Pennsylvania Council on the Arts*****
Philadelphia Cultural Fund****

OTHER GROUPS
Craft Association of Tyler Students**
Congregation Beth Shalom
Philadelphia Water Color Society*
Temple University General Alumni
Association****

PARENTS
Romani Abney
Lori Andrews
Mr. and Mrs. Ralph A. Antonelli*
Carla Arnold
David B. Ballard
Hellen Ballak
Edith Sayen Ban*
Judith Barry
Bruce Bennett
Barbra Beuke
Mary Ellen Billups
Katrinia Blackmon
Dr. Beatrice K. Blasdel
Terrill Blew
Carol Bobrek
Judith J. Bohot
Zenie Bohl
Joseph Bono
Verlean Boney
Denise Boyle
Grace Breuer
Arlene Brickman
George Briscella
Maureen De Brito
Beth Kaylor Brunner
James Bus
Pandora L. Busfield
Deany Cameron
Charles Canali
Margaret A. Capobianco
Richard Capriotti
James R. Cardell*
Rosa Cariola
Charles Catherwood
Ana C. Chan*
Martine Chauvet
Beverly Christian
Gary Christie
Patricia Chrostowski
Dominic A. Colazzo*
Kathleen M. Comly
Judy Conlin
Teresa R. Conn
Rosemary C. Cooper
Joseph & Lorraine Czekaj
Theresa Daly
Susan E. Daniel
Anita Delquadro
Felix Demico
Susan DiGuseppe
Nancy DiPalo
Lea Doiron*
Bernadette Druckenmiller
Gregory Duke
Janice Dusik
Diana Harmon Edel
Sarah England
Roxann Fairchild
Robert Fee
Donna Fisher
Robert A. Fisher
Peter Forrester
Colleen Frayne
Rose Marie Frederick
Alice Fritch
John Gallia
Nigel Gayle
Jeremy Gaynor
Thomas Gilboy
Susan Grant
Terry Hagen
Shawn Harris
Paulette Hassey

FOUNDATIONS
The Joseph Gluck Foundation***
Stockton Rush Bartol Foundation ****
Roberts Charitable Foundation****
Phoebe W. Haas Charitable Trust*****
Malcolm Hewitt Wiener
Foundation*****
The Institute for Aegean Prehistory*****

FRIENDS
Anonymous Donors*
Howard C. Becker*
Alfred Bogdanoff*
David & Olga Borker*
Colleen Bornmueller*
Donna Corbin
Mitchel S. Finkelstein*
Tranda S. Fischelis*
Michael J. Goldman*
Jacqueline M. Greenwell
Nancy Robinson Imbriglia
Robyn L. Jacobs
Aravind K. Joshi*
Carl Kaplan*
Karen M. Keener*
John C. Knowles***
Carol Kods***
Jane Korman*
David Stern Loeb, Jr.*
Karen L. Lomigora
Donald and Anne Martin
Sarah McEaney
David P. McShane
Anne D'Harcourt Rishel
Carleton Schwager
Angela Schwartz
Kathy Malis Schenkman****
Judith M. Shapiro
Joy Stember
Bayard T. and Frances E. Storey
Sophie S. Springer
Christopher J. Vecchio, PhD
Joseph W. Waz, Jr.
David Wice, Esq.**
George L. Wolff*
Neil E. Wummer*

GOVERNMENT AGENCIES
National Endowment for the Arts*****
Pennsylvania Council on the Arts*****
Philadelphia Cultural Fund****

OTHER GROUPS
Craft Association of Tyler Students**
Congregation Beth Shalom
Philadelphia Water Color Society*
Temple University General Alumni
Association****

PARENTS
Romani Abney
Lori Andrews
Mr. and Mrs. Ralph A. Antonelli*
Carla Arnold
David B. Ballard
Hellen Ballak
Edith Sayen Ban*
Judith Barry
Bruce Bennett
Barbra Beuke
Mary Ellen Billups
Katrinia Blackmon
Dr. Beatrice K. Blasdel
Terrill Blew
Carol Bobrek
Judith J. Bohot
Zenie Bohl
Joseph Bono
Verlean Boney
Denise Boyle
Grace Breuer
Arlene Brickman
George Briscella
Maureen De Brito
Beth Kaylor Brunner
James Bus
Pandora L. Busfield
Deany Cameron
Charles Canali
Margaret A. Capobianco
Richard Capriotti
James R. Cardell*
Rosa Cariola
Charles Catherwood
Ana C. Chan*
Martine Chauvet
Beverly Christian
Gary Christie
Patricia Chrostowski
Dominic A. Colazzo*
Kathleen M. Comly
Judy Conlin
Teresa R. Conn
Rosemary C. Cooper
Joseph & Lorraine Czekaj
Theresa Daly
Susan E. Daniel
Anita Delquadro
Felix Demico
Susan DiGuseppe
Nancy DiPalo
Lea Doiron*
Bernadette Druckenmiller
Gregory Duke
Janice Dusik
Diana Harmon Edel
Sarah England
Roxann Fairchild
Robert Fee
Donna Fisher
Robert A. Fisher
Peter Forrester
Colleen Frayne
Rose Marie Frederick
Alice Fritch
John Gallia
Nigel Gayle
Jeremy Gaynor
Thomas Gilboy
Susan Grant
Terry Hagen
Shawn Harris
Paulette Hassey

FOUNDATIONS
The Joseph Gluck Foundation***
Stockton Rush Bartol Foundation ****
Roberts Charitable Foundation****
Phoebe W. Haas Charitable Trust*****
Malcolm Hewitt Wiener
Foundation*****
The Institute for Aegean Prehistory*****

FRIENDS
Anonymous Donors*
Howard C. Becker*
Alfred Bogdanoff*
David & Olga Borker*
Colleen Bornmueller*
Donna Corbin
Mitchel S. Finkelstein*
Tranda S. Fischelis*
Michael J. Goldman*
Jacqueline M. Greenwell
Nancy Robinson Imbriglia
Robyn L. Jacobs
Aravind K. Joshi*
Carl Kaplan*
Karen M. Keener*
John C. Knowles***
Carol Kods***
Jane Korman*
David Stern Loeb, Jr.*
Karen L. Lomigora
Donald and Anne Martin
Sarah McEaney
David P. McShane
Anne D'Harcourt Rishel
Carleton Schwager
Angela Schwartz
Kathy Malis Schenkman****
Judith M. Shapiro
Joy Stember
Bayard T. and Frances E. Storey
Sophie S. Springer
Christopher J. Vecchio, PhD
Joseph W. Waz, Jr.
David Wice, Esq.**
George L. Wolff*
Neil E. Wummer*

GOVERNMENT AGENCIES
National Endowment for the Arts*****
Pennsylvania Council on the Arts*****
Philadelphia Cultural Fund****

OTHER GROUPS
Craft Association of Tyler Students**
Congregation Beth Shalom
Philadelphia Water Color Society*
Temple University General Alumni
Association****

PARENTS
Romani Abney
Lori Andrews
Mr. and Mrs. Ralph A. Antonelli*
Carla Arnold
David B. Ballard
Hellen Ballak
Edith Sayen Ban*
Judith Barry
Bruce Bennett
Barbra Beuke
Mary Ellen Billups
Katrinia Blackmon
Dr. Beatrice K. Blasdel
Terrill Blew
Carol Bobrek
Judith J. Bohot
Zenie Bohl
Joseph Bono
Verlean Boney
Denise Boyle
Grace Breuer
Arlene Brickman
George Briscella
Maureen De Brito
Beth Kaylor Brunner
James Bus
Pandora L. Busfield
Deany Cameron
Charles Canali
Margaret A. Capobianco
Richard Capriotti
James R. Cardell*
Rosa Cariola
Charles Catherwood
Ana C. Chan*
Martine Chauvet
Beverly Christian
Gary Christie
Patricia Chrostowski
Dominic A. Colazzo*
Kathleen M. Comly
Judy Conlin
Teresa R. Conn
Rosemary C. Cooper
Joseph & Lorraine Czekaj
Theresa Daly
Susan E. Daniel
Anita Delquadro
Felix Demico
Susan DiGuseppe
Nancy DiPalo
Lea Doiron*
Bernadette Druckenmiller
Gregory Duke
Janice Dusik
Diana Harmon Edel
Sarah England
Roxann Fairchild
Robert Fee
Donna Fisher
Robert A. Fisher
Peter Forrester
Colleen Frayne
Rose Marie Frederick
Alice Fritch
John Gallia
Nigel Gayle
Jeremy Gaynor
Thomas Gilboy
Susan Grant
Terry Hagen
Shawn Harris
Paulette Hassey

FOUNDATIONS
The Joseph Gluck Foundation***
Stockton Rush Bartol Foundation ****
Roberts Charitable Foundation****
Phoebe W. Haas Charitable Trust*****
Malcolm Hewitt Wiener
Foundation*****
The Institute for Aegean Prehistory*****

FRIENDS
Anonymous Donors*
Howard C. Becker*
Alfred Bogdanoff*
David & Olga Borker*
Colleen Bornmueller*
Donna Corbin
Mitchel S. Finkelstein*
Tranda S. Fischelis*
Michael J. Goldman*
Jacqueline M. Greenwell
Nancy Robinson Imbriglia
Robyn L. Jacobs
Aravind K. Joshi*
Carl Kaplan*
Karen M. Keener*
John C. Knowles***
Carol Kods***
Jane Korman*
David Stern Loeb, Jr.*
Karen L. Lomigora
Donald and Anne Martin
Sarah McEaney
David P. McShane
Anne D'Harcourt Rishel
Carleton Schwager
Angela Schwartz
Kathy Malis Schenkman****
Judith M. Shapiro
Joy Stember
Bayard T. and Frances E. Storey
Sophie S. Springer
Christopher J. Vecchio, PhD
Joseph W. Waz, Jr.
David Wice, Esq.**
George L. Wolff*
Neil E. Wummer*

GOVERNMENT AGENCIES
National Endowment for the Arts*****
Pennsylvania Council on the Arts*****
Philadelphia Cultural Fund****

OTHER GROUPS
Craft Association of Tyler Students**
Congregation Beth Shalom
Philadelphia Water Color Society*
Temple University General Alumni
Association****

PARENTS
Romani Abney
Lori Andrews
Mr. and Mrs. Ralph A. Antonelli*
Carla Arnold
David B. Ballard
Hellen Ballak
Edith Sayen Ban*
Judith Barry
Bruce Bennett
Barbra Beuke
Mary Ellen Billups
Katrinia Blackmon
Dr. Beatrice K. Blasdel
Terrill Blew
Carol Bobrek
Judith J. Bohot
Zenie Bohl
Joseph Bono
Verlean Boney
Denise Boyle
Grace Breuer
Arlene Brickman
George Briscella
Maureen De Brito
Beth Kaylor Brunner
James Bus
Pandora L. Busfield
Deany Cameron
Charles Canali
Margaret A. Capobianco
Richard Capriotti
James R. Cardell*
Rosa Cariola
Charles Catherwood
Ana C. Chan*
Martine Chauvet
Beverly Christian
Gary Christie
Patricia Chrostowski
Dominic A. Colazzo*
Kathleen M. Comly
Judy Conlin
Teresa R. Conn
Rosemary C. Cooper
Joseph & Lorraine Czekaj
Theresa Daly
Susan E. Daniel
Anita Delquadro
Felix Demico
Susan DiGuseppe
Nancy DiPalo
Lea Doiron*
Bernadette Druckenmiller
Gregory Duke
Janice Dusik
Diana Harmon Edel
Sarah England
Roxann Fairchild
Robert Fee
Donna Fisher
Robert A. Fisher
Peter Forrester
Colleen Frayne
Rose Marie Frederick
Alice Fritch
John Gallia
Nigel Gayle
Jeremy Gaynor
Thomas Gilboy
Susan Grant
Terry Hagen
Shawn Harris

TWO TYLER FACULTY MEMBERS RETIRE

Vietnam was disrupting the nation, Beatles tunes were everywhere, Medicare was born, and a first class stamp was just five cents.

PAINTER RICHARD CRAMER

It was 1966 and Richard Cramer, a young painter from Wisconsin, had just joined the faculty of the Tyler School of Art.

This summer, Cramer retired after 37 years of teaching promising artists at the campus in Elkins Park. He estimates that he has taught nearly 5,000 aspiring artists over his four decades at the campus in Elkins Park. Many are now teaching thousands of students at major art schools, colleges, and secondary schools across the nation.

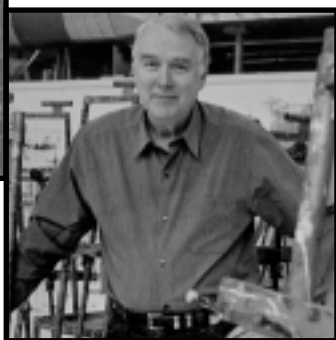
Cramer is perhaps best known for his exhaustive studies in the use of color and his "Color Field Paintings," which included the use of thousands of colors. This work was an important aspect of the Minimalist movement from about 1969 to 1983.

In celebration of this body of work and the impact it had on his students, an exhibition titled *Cramer's Colorforce* was held from April 25 through May 16, 2003, at the Optimistic Gallery in Philadelphia. The gallery is run by one of Cramer's former students, Jeff McMahan, who is now teaching at Tyler.

Cramer's memorable exhibition titled *Intricate Structure, Repeated Image* held at Tyler in 1979 included a concert by Minimalist musician and composer Steve Reich. Today, he says, his work is "more figurative, but with an abstract quality."



Richard Cramer, then.



Richard Cramer, now.

He is currently working on a series of very time-intensive works that take three to six months to complete. Many are intricate drawings depicting architecture, birds, and what he calls "cartoonish figures."

His work has been shown in scores of exhibitions held at museums and galleries such as the Pennsylvania Academy of Fine Arts, the J. Rosenthal Gallery in Chicago, and the Glasgow (Scotland) School of Art. Recent solo exhibitions include those held at Space 504 and the Caelium Gallery in New York City, and at the Institute of Contemporary Art in Boston.

Cramer's paintings are held in dozens of private and public collections, including the Philadelphia Museum of Art, SmithKline Beckman Corporation, the Virginia Museum of Fine Arts, and Merck.

Cramer will always be remembered for taking his landscape classes on field trips to Schuylkill County. Over the years, he took countless numbers of students to paint directly from nature in Girardville, the new Saint Nicholas coal breaker, and Pottsville. There students had direct access to the rhythmic moves of mountains, manmade objects, multi-ethnic architecture, and coal and railroad industries.

Students will also remember the intensive relationships he had in his classes, including reviews in his apartment that went on into the wee hours of the night.

Cramer said he's had "a really wonderful time at Tyler," and that Tyler "remains a great school with a wonderful faculty and exceptional students."

He earned a Bachelor of Fine Arts degree from the Milwaukee Institute of Art and Design, a Bachelor of Science degree from the University of Wisconsin (Milwaukee), and a Master's degree from the University of Wisconsin (Madison). Before joining the Tyler faculty, he had taught at the University of Wisconsin and at Elmira College in New York where he met his wife, Carol Markel.

Cramer's honors and awards have been numerous, among them a Great Teacher Award from Temple, which included a \$10,000 cash prize, a Meet the Composer Foundation grant, and grants from the Pennsylvania Council on the Arts and the Pew Charitable Trusts.

For the past several years, Cramer and Carol—herself a designer and writer—have commuted between homes in Jenkintown and lower Manhattan, but have now moved permanently to their New York City residence. "I want to get back into the New York gallery scene," Cramer explained.



Milton Paleologos, now.



Milton Paleologos, then.

ART EDUCATOR MILTON PALEOLOGOS

Milton Paleologos retired last year after 33 years of teaching in the Art and Art Education Department at Tyler. During his tenure, Paleologos witnessed several name changes and departmental shifts as well as a physical move from Ritter and College Hall into the existing facilities in Anderson Hall. And, during it all, he always remained highly dedicated to teaching and to working with children.

Milton Paleologos received a BS in Art Education in 1966 from Massachusetts College of Art and an MED in Art Education from Pennsylvania State University in 1967. He went on to receive a DEd in Art Education from Penn State in 1976 after joining the Tyler faculty. According to Dr. Jo-Anna Moore, the current Chair of the Art and Art Education Department, Paleologos's degrees are from, "two of the most distinguished institutions of higher education for art education in the United States."

His career at Tyler unfolded primarily in the classroom but he was also the acting chair of the department from 1972 to 1973 and chair from 1977 to 1979. Moore describes Paleologos as a "gentleman who always treated teachers and students with respect." Moore added, "clearly he loved working with kids and was gifted at doing so." This is clear in his extra-curricular activities which included many summers as an art teacher at a local summer camp.

Paleologos continues to make his own work, particular three-dimensional work, some of which is included in the permanent collection of Penn State. Jane Bonelli, faculty emerita in the Art Education program, said of Paleologos, "He is a wonderful artist. His paintings and three-dimensional work are impeccably beautiful. He is a painter, a sculptor, and writes beautifully. But, he prefers to demonstrate his artistry on his home, a miniature Victorian that he is restoring. This is where his art really manifests itself."

Paleologos's philosophy of art education was rooted in his Penn State studies as a follower of Viktor Lowenfeld, which always put the child at the center of art education. Over the years, generations of Tyler and Temple students benefited from having such a strong core of beliefs about a child-centered art education. Paleologos wrote his dissertation on theories of creativity and took seriously the place of creative thought in the educational enterprise.

"Milt loved his students and his students adored him," said Bonelli, adding, "Care and concern about his students was always foremost in his mind."

NEWS AROUND CAMPUS

We welcome Barbara Kirsch as Tyler's Bursar. She replaces Theresa Kitch who left to pursue her college degree on a full-time basis... Deborah Jolly is our new Administrative Coordinator in the Associate Dean's office... Tyler's new evening librarian is Don Baldino... We welcome Anthony Black (MFA, '02) as Tyler's new Admissions Counselor... Mark Rice joins the staff as Residence Hall Director, replacing Shayla Hasic-Stamps... Johanna Inman is our new Assistant Slide Curator replacing Beth Peckman...

Dermot MacCormack, Graphic and Interactive Design, is now a tenured faculty member and an Associate Professor... Tyler welcomes several new full-time faculty members: Pamela Lawton, Art/Art Education; Michael Kelly, Architecture; Jennie Shanker, Foundations; and Thomas Zummer, Painting and Critical Theory... In facilities, John McCullough retired as Tyler's electrician in December of 2002... John Thomas, long-time head of Security on the Tyler Campus, retired in the summer of 2003...



Officer John Thomas.

'42 Aileen H. Danneberg, BFA and BSEd '49, spent 21 years organizing and running craft shows for Lylburr Arboretum's Annual Market Day. She has been exhibiting her photographic note cards at Lylburr and the Maryvale School in Baltimore where she lives.

'48 Aaron Shikler, BFA/BSEd/MFA, had an exhibition at the Davis & Langdale Gallery in New York City which ran from October 18 through November 15, 2003. The Gallery is owned by fellow Tyler alumnus Roy Davis (BFA/BSEd '48 and MFA '49).

'52 Helen Williams Drutt English, BFA, was featured in the spring 2003 issue of the *Temple Review*.

Arlene Love, BFA and BSEd '53, had a solo show of recent work in a new medium at the University of Scranton in Scranton, PA. *Sunday in Tlacolula* featured micro-piezo pigment print photographs.

Joan Leff Miller, BFA Painting, had two shows last year, one solo show at Southampton College's Avram Gallery and another with her daughter at the Gayle Wilson Gallery in Southampton.

'55 Lowell Nesbitt (1933-1993), BFA, was the subject of a retrospective exhibit during September/October 2003, at Eric I. Spoutz Gallery in Detroit MI.

'56 Barbara Chase-Riboud, BFA, has written a new novel, *Hottentot Venus*, published by Doubleday. Her 1979 novel, *Sally Hemings*, the story of Thomas Jefferson's slave mistress, led to the DNA tests that proved Jefferson fathered Hemings's children. After attending Tyler, she became the first African American to be a guest editor in *Mademoiselle* magazine's annual competition. She received an MFA from Yale University and met her first husband, the photographer Marc Riboud, on a trip to Paris in 1961. They had two sons. They divorced in 1981, but Paris has remained her home ever since. Her recent book is the outcome of a sculpture she installed at the Federal Building in New York City in 1997 honoring African women. In researching the Venus Hottentot for the sculpture, she realized she had enough information for a book. In an article on November 9, 2003 in *The Philadelphia Inquirer*, she said that this project is the first time her artistic and literary paths have crossed.

'58 Paula Winokur, BFA Ceramics, had an exhibition at the Clay Art Center in Port Chester, New York in April 2003.

James Ruban, BFA and MFA Painting, exhibited abstract paintings in the eighth group show titled *Friends of Pleiades Invitational* at the Pleiades Gallery, NYC from December 2002 through January 2003.

George Douris, MFA Sculpture/Painting, is a retired art educator. He founded with his wife an Arts and Humanities program in Chalkidiki, Greece in 1969. He and his wife ran the program from 1969 to 1980.

'59 Meyer Shulick, BFA/BSEd and MFA '64, made a painting depicting the building that houses the law firm of Anapol, Schwartz, Weiss & Schwartz. He and his son, David, a Temple University Beasley School of Law graduate from 1994, donated the painting to Temple in honor of his wife, Judy, whose death in an auto accident led to David's applying to Law School.

The painting is displayed in Barrack Hall on Temple's Main Campus, a renovated Frank Furness building which is on the National Registry of Historical Places.

'61 Marilyn (Golinko) Gershoni-Jung, BFA, has set up an Internet Painting Exhibition, which can be viewed at www.geocities.com/marilyngershoni-jung.

Henrietta Thomas, MFA, exhibited sculpture and watercolors in March, 2003 in the group show, *Four Artists Explore the Graceful Union of Balance and Nature*, at the Lancaster County Art Association in Strasburg, PA.

'63 Frederick S. Osborne, BFA, was appointed President of Lyme Academy College of Fine Arts in Lyme, CT. He was appointed after an extensive national search led by trustees, faculty, and alumni of the Lyme Academy. He is the second president of the college. Fellow Tyler alum Terry Dagradi (BFA Photography '79) represented the President of Temple University at Osborne's inauguration ceremony.



Frederick Osborne ('63), new President of Lyme Academy College of Fine Arts.

'64 James L. Gaither, BFA/MEd Painting, had a watercolor accepted into the AWS 136th *Annual International Exhibition* in NYC. He won the Gold Brush Award at the Sixth annual NPWS for the second time in 2002. The winning painting was featured in *Watercolor Magazine's* May 2003 issue.

The Honorable William Alexander Scott, BFA, has been the Premier of Bermuda since 1998 when his Progressive Labor Party beat the United Bermuda Party by 26 seats to 14. It was the latter's first ever defeat in 35 years of political party voting.

'65 Dr. Mary Anne Morgan, BFA Painting with Teaching Certification, visited Temple Rome last fall with the purpose of establishing a distance learning program between Tyler students and Sterling High School art students. A virtual "pen pal" mentoring program began in the fall of 2003. Her students created a portfolio of computer graphics entitled "Support Our Troops" that was presented to President George W. Bush and troops in Iraq.

'66 Albert Paley, BFA Metals and MFA Metals '69, had an exhibition of his drawings entitled *Points of Entry* at Kimberly Verandos and Company, Inc. in NYC. The exhibition was on view from March 21 through April 19, 2003.

'67 Judith Brodsky, MFA, helped to organize the Philadelphia Print Collaborative's Fall Benefit as a member of their Steering Committee. She had a solo exhibition at the Rider University Gallery in Lawrenceville, NJ which ran from September 25 through October 26, 2003. She gave an artist's talk as part of the

exhibition on October 16, 2003. She was on the Honorary Committee for the Print Center's Red Grooms exhibition and co-hosted the Center's gala fundraiser as part of the exhibition.

'69 Diane Pieri, BFA, had a solo exhibition of paintings, *Sacred Lakes*, at Saint Joseph's University's Gallery. She contributed work to the *Cascarones Por La Vida* silent art auction to support teenage students affected by HIV/AIDS with tuition, materials, and transportation for art classes in the Philadelphia area.

Charlotte Schatz, BFA, exhibited paintings in the exhibition *assemblage/2003* at West Chester University's McKinney Art Gallery in West Chester, PA. She participated in the Philadelphia Open Studio Tour in October, 2003.

Marilyn Simon, MEd, had a solo exhibition of recent works at Artforms Gallery in Manyunk titled *Inside, Outside, Upside Down* which ran through September 2003.

'70 Moe Brooker, BFA and MFA '72, received the prestigious James Van der Zee award in October 2003. The award is given annually by the Brandywine Workshop in Philadelphia to African American artists for lifetime achievement. Artists chosen have at least 30 years of professional experience and have maintained a high standard for their work and mentored young minority artists. He has works in the collections of the Philadelphia Museum of Art, the Cleveland Museum of Art, the University of Michigan, and Ford Motor Company headquarters. His work was also used in an Absolut Vodka advertisement. His work is represented by Sande Webster Gallery in Philadelphia and he teaches at Moore College of Art and Design.

Jim Morphesis, BFA Painting, had a solo exhibition at Flora Lamson Hewlit Library/ Gallery of the Graduate Theological Union in Berkeley, CA. He was represented in December in the fourth *Florence International Biennial of Contemporary Art* held at the Fortezza da Basso, in Florence, Italy. One of his paintings has been acquired for the permanent collection of the Museum of Contemporary Art San Diego in La Jolla, CA. He is an associate professor at Pasadena City College and Chair of the Studio Department of the division of Visual Arts and Media Studies.

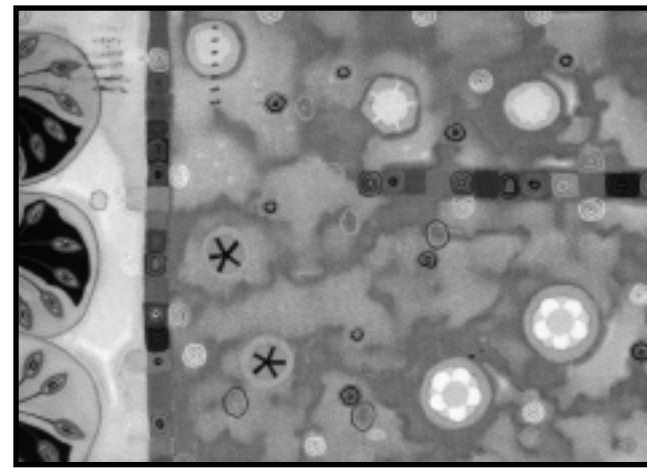
Paula Scher, BFA Graphic Design, appeared in the September 29, 2002 issue of the *New York Times Magazine* in an article about "taste makers and the wheels they love." She received Tyler's Certificate of Honor at Temple University's Founder's Day Dinner in April 2003.

'71 Allan Edmunds, BFA and MFA '75, helped to organize the Philadelphia Print Collaborative's Fall Benefit as a member of their Steering Committee.

Lynne Dian Gulezian, BFA, had an exhibition, *Bearing Witness*, at the Pagus Gallery of the Norristown Arts Building that ran from November 9 through December 18, 2003.

Mitch Lyons, MFA, exhibited in the show, *Six Printmakers: Six Unique Visions*, at the Montgomery Center for the Arts in Skillman, NJ.

Laurie Simmons, BFA, had a two-page article with full color illustrations about her new "Instant Decorator" series in the *New York Times Home and Design Magazine's* spring 2003 issue. Her work was reproduced on the cover of *BOMB* magazine's fall 2003 issue.



Diane Pieri ('69), "Ratnapuri", gouache on clayboard, 11" x 14".

'72 Neila Kun, BFA Photography, exhibited photograms exploring dualities such as inside versus outside at the Painted Bride Art Center in Philadelphia through December 28, 2003.

'73 Dennis Haugh, BFA, provided artistic assistance to the teen program of Project H.O.M.E. in Philadelphia. Teens participating in the project used computer design programs and their own silhouettes to produce a mural in a neighborhood playground. Project H.O.M.E. provides assistance and opportunities for homeless families in Philadelphia.

Steven J. Vitulli, BFA Painting, exhibited work at the Green Mountain Gallery in the summer of 2002. He was honored in the spring of 2002 by the National Art League of Douglastown, NY with a Purchase Prize.

'74 Veronica Benning, MFA Painting, exhibited in 2003 at the Ringling School of Art and Design, Sarasota, FL. She had a solo exhibition, *Complexions: Collages & Paintings*, at Galeyrrie in Falmouth, ME which ran October 18 through November 15, 2003. Her work was included in a group show at the same gallery earlier this year. She was included in a group show in 2002 at the US Court House and Federal Building in Fort Myers, FL.

Ernest R. Silvia, MFA Sculpture, had several solo exhibitions this year: one in New York at Art Resource Transfer, Inc. and two in Italy at the Fenaroli Center in Lanciano and at the Ninpi Gallery in Ravenna. He is a professor of visual art at the University of California, San Diego.

'76 Candi Haas-Simmons, BFA Painting, collaborated with fellow Tyler graduate Eva Altomari Yashinsky on the creation of the scenery for the Pottstown School District's production of *Hello Dolly*. Yashinsky has been the art director for all the plays produced at Pottstown High for the last 26 years.

Babette Martino, BA, had an exhibition of oils, from March to May, 2003, at Dartmouth College, Hopkins Center, in Hanover, NH. She exhibited in *Casting Shadows* at the Salon des Amis Gallery in Malvern, PA in the fall of 2003.

Sharon Siskin, BFA Painting, was appointed Assistant Professor of Studio Art and Community Outreach at the University of San Francisco. She was one of 36 California artists to receive an Artist's Fellowship from the California Arts Council for 2003. She had a solo exhibition entitled *Baby, Baby!* at Gallery Rt. One in Point Reyes Station, CA. The show examined the work of raising twin daughters born in 1998.

Warren Spindler, BFA Painting, lost his sculpture/modelmaking studio in a fire in March 2003. A fund has been set up at the Harleysville National Bank for donations to help Warren rebuild.

Eva Altomari Yashinsky, BFA Graphic Design, has been the art director for all the plays produced at Pottstown High for the last 26 years. This year she asked fellow Tyler grad **Candi Haas-Simmons** to be her assistant director in creation of the scenery for the Pottstown School District's production of *Hello Dolly*.

'77 **Eva Kwong**, MFA Ceramics, was the 2002 Artist in Residence at Zygote Press in Cleveland, OH and also taught workshops at Hui-No'e'an Visual Arts Center in Maui, Hawaii; Oxbow SIAC in Saugatuck, MI; the 92nd Street Y in New York City and the Arrowmont School of Craft in Gatlinburg, TN. She had two exhibitions—*Quinta Essentia: East and West* at Zygote Press in Cleveland, and *Opposites Attract*, a solo show, at Pewabic Pottery in Detroit, MI.

Lisa Learner, BFA Painting, is exhibiting in the Vose Gallery in Boston from November 22, 2003 through January 17, 2004. The exhibit, *Teaching the New Realism: Mentors and Proteges*, features the work of a small group of artists, including Andrew and son Jamie Wyeth, who each select a talented student to show with them in the exhibit. Her work was recently selected by the realist painter Janet Fish to hang in the Woodmere Museum in Chestnut Hill, PA; was chosen to be part of the *Art of the State* show in the State Museum in Harrisburg, PA; and continues to be exhibited at the David David Gallery in Philadelphia.

'78 **Polly Apfelbaum**, BFA Printmaking, had a solo exhibition in the spring of 2003 of installations and works since 1989 at the Institute of Contemporary Art in Philadelphia. Tyler honored her as one of the school's two Gallery of Success representatives for 2003–2004. The Gallery of Success is a photography gallery in Mitten Hall on Temple's Main Campus.

Jean Foos, MFA, participated in the group show, *My Mother's An Artist*, at the Ernest Rubenstein Gallery in NYC. She exhibited in *Economy and Ecstasy: A Group Exhibition of International Artists* at Raab Gallery in Berlin, Germany.

Bruce Pollock, MFA Painting, contributed work to the *Cascarones Por La Vida* silent art auction in April 2003 at the Painted Bride Art Center to assist teens affected by HIV/AIDS to attend art classes in the Philadelphia area.

'79 **Terry Dagradi**, BFA Photography, represented Temple University President David Adamany at the inauguration of fellow Tyler alum Frederick Osborne's inauguration as the second president of Lyme Academy in Lyme, CT.

Becky Koenig, BFA Painting, has recently finished a college textbook on color and design published by Prentice Hall entitled *Color Workbook*. The book is appropriate for any color theory or foundation color and design class. She has been a professional artist for 22 years and for 15 years has been an adjunct professor at many western New York colleges and universities.

Stephen Talasnik, MFA, had a solo exhibition of panorama drawings at Architektur Galerie in Berlin, Germany in the spring of 2003 and will have a solo exhibit of prints, drawings, and sculpture at the MAK (Museum of Applied Arts) in Vienna, Austria during 2003–2004. He was featured in a cover story in *Sculpture* magazine, summer 2002 issue. In the spring of 2003, the

Tamarind Institute in Albuquerque, NM, published his lithographs. He had photogravures at Kido Press in Tokyo during the summer of 2003 and will have his sculpture featured at the Queens Museum of Art, NY. He will do an installation of architectural structures at Sculpture Center, NYC, in January 2004.

'80 **Charmaine Caire**, BFA, was featured in *Say Something: The Art of Politics* at the Painted Bride Art Center which is on exhibit November 7, 2003 through January 12, 2004, curated by fellow Tyler alum **Cavin Jones**.

James "Slim" Cook, MFA, installed a 2,500 square foot sculpture, "Rituals of the Rock Gods," which consists of a dozen 10- to 20-foot-tall wooden figures. The figures were part of the Field Day Music Festival in Calverton, NY. As the musicians were performing, the sculptures of rock stars, fans, and dancers were constructed. He was invited to participate in the Mather Hospital outdoor sculpture show and has also been commissioned to create a "Maiden of the Lake" sculpture in bronze and copper for the Schem Public Library in Holbrook, NY.

Caren Rubinson (Lipkin), BFA Graphic Design, participated in the judging of the 2003 Gold Ink Awards, sponsored by North American Publishing Company. She is creative services manager for Independence Blue Cross.

Laurie Weller, MFA Printmaking, had a solo exhibition in September/October 2003 of recent works at the University of Oklahoma's Lightwell Gallery titled *Biomorphia*.

'81 **John Donnelly**, BFA Painting, has been promoted to Art Department Chair at Mount Vernon Nazarene University, Mount Vernon, OH. He directs the university gallery and welcomes proposals for exhibitions: donnelly@mvnu.edu. In January and February 2003, he had a solo exhibit of 52 paintings entitled *Bellezza* at Villanova University.

Annette Kushen, BFA, received a juror's award for a photograph that had been chosen for the 26th *Small Works Show* at New York University's 80 Washington Square East Galleries in NYC.

Steven Montgomery, MFA, was featured in an article in the 2003 *American Ceramics* Magazine titled "Big Apple Clay." His work was reproduced in the article.

Karen Schmauk, BFA Painting, exhibited her *Fiske Terrace* watercolor series in the faculty exhibit at St. Francis College in Brooklyn, NY, in November 2002.

John Stango, BFA Painting, opened a new gallery "Stango" in Manyunk in May 2003. He donated ten percent of the opening night sales to Tyler School of Art. He was highlighted in an article in *The ARTBOOK* of the New West magazine's spring/summer 2003 issue. An interview with John appeared in the May/June 2003 issue of *Line Magazine*. He was featured in the *Philadelphia Daily News* in a June 2003 interview.

'82 **Kevin Finklea**, BA Art, had work in Art Frankfurt in Frankfurt, Germany in April 2003. He had work in a group show at Pentimenti Gallery from July through September 2003. He participated in the Affordable Art Fair in NYC during October 2003 and participated in the San Francisco Art International—sf6 in January 2004.

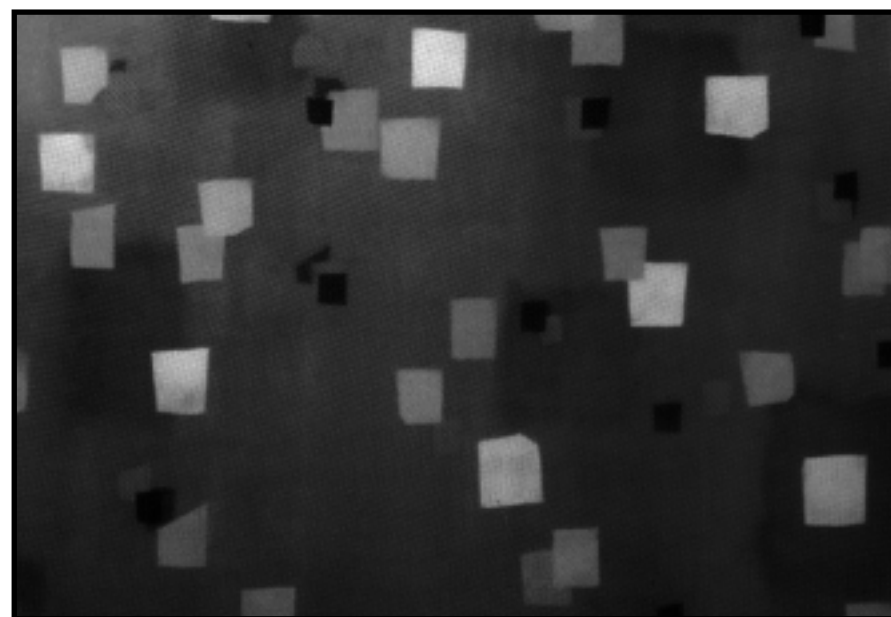
Renee P. Foulks, MFA Painting, had an exhibition at the Pennsylvania Academy of the Fine Arts entitled *In Quest of Oracles and Sacred Places: Renee Foulks' Work of the Last Decade*. The exhibition ran during October/November 2003. She will exhibit in a two-person exhibition at Artists' House Gallery in February 2004.

Sharon Hicks, BFA Painting, is a holistic vision practitioner/educator, artist, and creative coach. She has established Personal Vision, a holistic vision practice that uses art and yoga to help others express their personal vision, improve their eyesight, and relax stress through holistic processes.

Cavin Jones, BFA Graphic Design, curated and exhibited in *Say Something: The Art of Politics* at the Painted Bride Art Center which was on exhibit November 7, 2003 through January 12, 2004.

Sandra Milner, MFA Ceramics, had an exhibition, *Night and Day*, at the Borovsky Gallery, Gershman YMHA from December 2002 through January 2003. The show of mixed media paintings was reviewed in the *Philadelphia Weekly* by Roberta Fallon. She took part in the 2003 *National Spring Juried Exhibition* at Wayne Art Center, which was juried by Pennsylvania Academy of the Fine Arts Dean Jeffery Carr. She exhibited during the spring of 2003 in the *Invitational Small Works Salon* show at the New Arts Program of Kutztown University.

Lisa Yuskavage, BFA Painting, donated work to the 2003 benefit auction at the Institute of Contemporary Art in Philadelphia. She was one of the artists selected to create work for a 40-page portfolio on the super model Kate Moss that appeared in the September 2003 issue of *W* magazine.



Steve Baris ('85), "Landscape with Random Clusters #8" (detail), oil on mylar, 24" x 24", 2003.

Jessica Loy, BFA Graphic Design, had her first children's book published in April 2003. In addition to being the author of the new book, *Follow the Trail, A Young Persons Guide to the Great Outdoors*, she was also responsible for the design, photography, and illustration—a first for the publisher Henry Holt and Company. She is a professor at the Center for Art and Design at the College of Saint Rose in Albany, NY where she teaches graphic design. She is working on her second book for Holt and looks forward to many more.

Hester Stinnett, MFA Printmaking, participated in the Philadelphia Print Collaborative's Fall Benefit as a featured artist.

'83 **Brian J. Cote**, BFA Painting, had a solo exhibition, *The Epiphany Series*, at the Manyunk Art Center during October, 2003.

'84 **Joe Begonia**, BFA Painting, had a solo exhibition at Abington Arts Center in Jenkintown, PA. The exhibition, *I Drift Like a Wave on the Ocean*, ran from September 6 through October 4, 2003.

Linda Bergoff (Dunlap), BFA Printmaking and MFA '94, had an exhibition at the Tampa Museum titled *Under Current Overview* and is currently teaching studio art and art history classes at St. Petersburg College at the Tarpon Springs Campus in Florida.

Marilyn E. Lavins, BFA Painting/Printmaking, had her work, "daffodil (narcissus)," selected by jurors for the Philadelphia Society of Botanical Illustrators for the 2003 Philadelphia Flower Show.

'85 **Steve Baris**, MFA Printmaking, had an exhibition in October and November of 2003 at Jeffrey Coploff Fine Art in NYC.

Nancy Citrino, BEd Art Education, had an exhibition in November 2003 at the Da Vinci Art Alliance in Philadelphia.

Leah Douglas, BFA metals, was curator for the exhibition *Fantastic Garments* which was part of the Art in City Hall program at Philadelphia City Hall and ran from March through May 2003.

Julia E. Sokol, BFA Painting, had work selected for inclusion in several shows including: *Art of the State: Pennsylvania 2003* in Harrisburg, PA; *Current Work 2003: A national competition*, Rosenthal Gallery, Fayetteville, NC; *The Community of Artists, South of South Street*, Dupree Gallery, Philadelphia; and *61st Annual Awards Painting Exhibition*, Cheltenham Center for the Arts, Cheltenham, PA. She received an award for her painting in the Cheltenham Exhibition. She participated in the ninth Annual *Philadelphia Furniture and Furnishers Show*, a national juried exhibition at the Pennsylvania Convention Center. She shows her work at the Buyers Market of American Craft, a wholesale show.

'86 **Marta Sanchez**, MFA Painting, organized and took part in the *Cascarones Por La Vida* silent art auction in April 2003 at the Painted Bride Art Center to raise support to assist teens affected by HIV/AIDS to attend art classes in the Philadelphia area. She had an exhibition at the Congresso de Latinos Unidos in Philadelphia in October 2003 as part of Noches de Arte en El Barrio, an evening to experience the best of Latino Culture in Philadelphia.

'87 Joyce Mansfield, BFA Painting, gave a lecture on December 3, 2003 at the Pennsylvania Convention Center in Philadelphia about her work that is in their permanent collection.

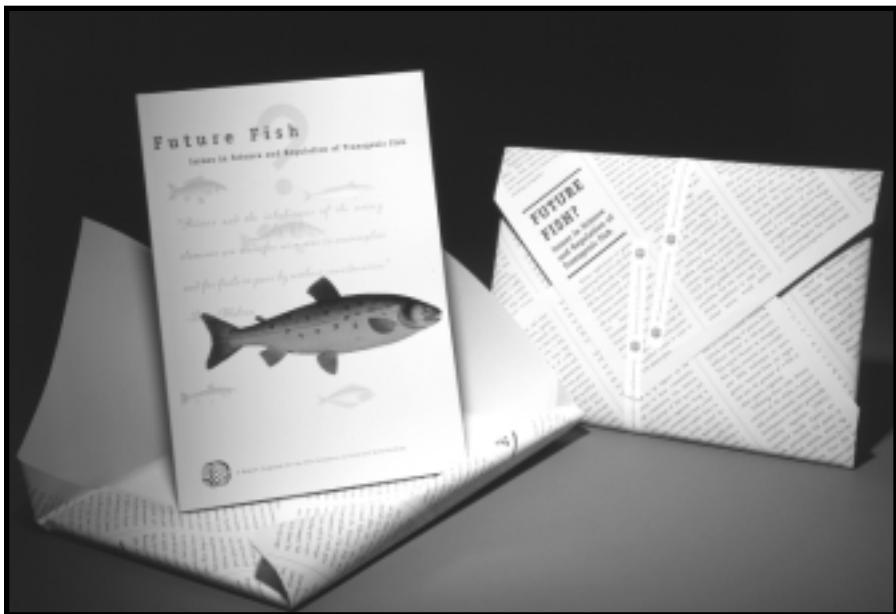
Shelley Thorstensen, MFA Printmaking, exhibited in *Six Printmakers: Six Unique Visions* at the Montgomery Center for the Arts in Skillman, NJ. The show ran during September 2003.

'88 Anna Boothe, MFA Glass, was included in a group show of glass and mixed media sculpture, *Out of the Fire*, at the Stedman Gallery of Rutgers, the State University of New Jersey. For the exhibition, four nationally acclaimed artists and distinguished teachers in the Delaware Valley region were invited to select an artist whose work "showed significant potential for artistic growth." The exhibition was reviewed in the *New York Times*.

Mari L. Lilley, BFA Painting, and **Richard E. Rhinevault, Jr.**, BFA Graphic Design, were married in a small ceremony on Saturday, August 9, 2003 at St. Matthew Evangelical Lutheran Church in Lancaster, PA. The best man was **Gordon Dunlap**, BFA '87 Graphic Design.

'89 Corliss Cavalieri, MFA Painting, produced a catalog of his work for his exhibition, *Commuter Drawings: From Philadelphia to Newark*, which took place at 55 Mercer Gallery in NYC in 2002.

Soonduk Krebs, BFA Graphic Design, had work included in the November 2003 Design Annual of *Communication Arts* magazine.



Soonduk Krebs ('89), "Future Fish", 2003.

Amy Orr, MFA Fibers, took part in the *Cascarones Por La Vida* silent art auction in April 2003 at the Painted Bride Art Center to raise support to assist teens affected by HIV/AIDS to attend art classes around the Philadelphia area.

'90 Nancy McDonald, MFA Graphic Design, contributed work to the *Cascarones Por La Vida* silent art auction at the Painted Bride Art Center in April 2003 to assist teenage students affected by HIV/AIDS with tuition, materials, and transportation for art classes in the Philadelphia area.

Virgil Marti, MFA Painting, had a retrospective display in May 2003 of workshop projects at the Project Room, on display during their benefit party. His wallpaper designs were included in a group show from May through September 2003 at the Fabric Workshop entitled *On the Wall: Wallpaper and Tableau*.

The exhibition was reviewed in the *New York Times* and the *Philadelphia City Paper*. He took part in the *Cascarones Por La Vida* silent art auction in April 2003 at the Painted Bride Art Center. In September 2003, he participated in the Philadelphia Print Collaborative's fall benefit as a featured artist. His installation was included in the Institute of Contemporary Art's *Flowers of Romance* show through December 14, 2003.

Stuart Netsky, MFA Sculpture, hosted a walk through on April 4, 2003 at the Locks Gallery during the run of his exhibition there. He was featured in an interview in *PFA*, the Pew Fellowship for the Arts new biannual publication.

Laura Parnes, BFA Painting, had a solo exhibition in 2003 at Participant Inc. in NYC which was reviewed in the *New York Times*. She was in several group shows in 2003 including *Adolescence* at the Museo Nacional Centro De Arte Reina Sofia in Madrid, Spain and *Melodrama* at the Museo de Arte Contemporaneo in Vigo, Spain.

'91 Michael Grothusen, MFA Sculpture, contributed work to the *Cascarones Por La Vida* silent art auction in April 2003 at the Painted Bride Art Center. The auction raised fund to assist teenage students affected by HIV/AIDS with tuition, materials, and transportation for art classes in the Philadelphia area.

E. Alice Oh, BFA Painting, had work in a group collaborative project with Space 1026 and Silicon Gallery in Philadelphia as part of the Philadelphia Print Collaborative. The opening was on November 7, 2003 at Silicon Gallery.

Gabriel Martinez, MFA Photography, exhibited work at a group show at the Five Spot in September 2003 in Philadelphia.

Robert Kent Wilson, BFA Graphic Design, is president and Creative Director of BLANK, Inc. a strategic design communications firm located in Washington, D.C. The firm's focus on corporate identities has brought them international exposure. From November 20 through 30, 2003, he displayed his collection of large-scale abstract artwork, *Creating Desire by Withholding*, at the HNTB Architecture Gallery in Washington, DC. The series explores his hyper-focused approach to imagery and experiments with new mediums.

'92 Drew Dominick, MFA Sculpture, had wallpaper designs included in a group show from May through September 2003 at the Fabric Workshop entitled *On the Wall: Wallpaper and Tableau*. The exhibition was reviewed in the *New York Times* and the *Philadelphia City Paper*.

Laurie Jean Jackson, MFA Painting, had an installation, *Between Yesterday and Tomorrow (Requiem)* at Project Row Houses in Houston, TX from April to August, 2003.

Mike Shea, BFA Painting, was recently included in the *Oregon Biennial* at the Portland Art Museum through September 2003 and had his fourth solo show at Froelick Gallery. He is represented by the Froelick Gallery, www.froelickgallery.com. His work was included in the exhibition *Ulterior Motives: Current Northwest Abstraction* at the Art Gym, Marylhurst University, Marylhurst, OR during November and December 2003.

'93 Christine Blair, MFA Painting, exhibited in the group show, *Nature Preserved, Altered, Invented*, at the Schuylkill Center for Environmental Education, April through June, 2003.

Paul Kepple, BFA Graphic Design, had work included in the November 2003 Design Annual of *Communication Arts* magazine.

Jacqueline Sandro, MFA Ceramics, was awarded an Individual Artist Fellowship Grant for Ceramics in February 2003 from the New Jersey State Council for the Arts.

Kyung-Hee Shin, MFA Printmaking, had a solo exhibition in May 2003, at Gallery Ihn, Seoul, Korea and a full color catalog was printed in conjunction with the exhibit.

'94 Shannon Bowser, BFA Sculpture, participated in the group show, *m.o.*, at the Project Room in Philadelphia, summer 2003.

Richard Harrod, MFA sculpture, participated in the group show, *I Saw the Light*, at the Project Room in Philadelphia, March through May, 2003.

James Sheehan, MFA Painting, participated in the exhibition *Ehrensaal* at the Hans der Kunst in Munich; in *Water Water* at the Rotunda Gallery in Brooklyn; and in *American Dream* at Ronald Feldman Gallery in NYC in the spring of 2003.

'95 Beth Lipman, BFA Glass, was featured in an interview in August 2003 on ArtSchools.com about her professional and academic perspectives on glass art.

Todd Scalise, BFA Painting, hosted the second annual Blue Cat Stew event in Erie, PA, which featured music, performance, visual arts, film, and spoken word by artists from around the country.

Matthew Stemler, BFA Sculpture, created a site-specific installation at the Eastern State Penitentiary in Philadelphia. The piece, titled *Juxtaposition*, is a collaboration with his brother Jonathan. The installation was on display through October 2003.

Nita Turnage, MFA Ceramics, is co-founder and executive director of Artica, a multi-disciplinary outdoor participatory arts festival based in the St. Louis Metropolitan area. She is also co-owner of Muse Creative Painting and Design, a specialty painting company. In the last

two years she has been in several group exhibitions in and around St. Louis including: *Found Artists at The Commonsplace*; Artica 2003: *Exploring the Edge* at the North St. Louis Waterfront; *Blue* at Crowe T. Brookes Gallery; *Phoenix Rising* at Art Coop; *Winter Windows on Washington*; and *Outside the Box* at In/ Form Gallery. She received fellowships from Ucross (WY) and The Community Arts Training Institute (MO).

Yoichiro Yoda, BFA Painting, exhibited paintings in the group exhibition *RE: Narrative* in August 2003 at the Compton-Goethals Gallery at the City College of New York. He is participating in the exhibition *In the Shadow of 9/11—A Chinatown Memorial Exhibition* in The Gallery at Silkroad Place in NYC.

'96 Renee Braun, BS Art Education, contributed student artwork from the Tanner Duckrey School to the Partnership Reader newsletter of Temple University's partnership schools program. She was awarded the Rose Lindenbaum award for excellence in teaching.

Hope Ginsburg, BFA Sculpture, gave a presentation on her Little Black Moustache and Rosy-Red Cheeks temporary tattoos as part of the Baltimore Museum of Art's "Work Ethic" Program, which runs until January 2004.

Randall Sellers, BFA Painting, took part in a group show, *Drawing For It*, at Spector Gallery in Philadelphia during the summer of 2003.

'97 Beth Ashby, BFA Photography, recently launched a new website www.fotojedi.com. A photograph she took of Paul Westerberg was published in *Discoveries* magazine and one of her photographs was used for a blues CD released by Bummer Tent Records.

Candy DePew, MFA Ceramics, held a studio sale and fundraiser to support the first issue of *Candy* magazine, a contemporary decorative arts magazine. A portion of the profits went to support the blind and visually impaired of Philadelphia. Candy had a solo show at the Clay Studio called *Climbing Mountains*. She participated in a group show at the Five Spot in Philadelphia during September 2003 and had artwork in the *Cascarones Por La Vida* silent art auction fundraiser in April 2003 at the Painted Bride Art Center. She participated as a featured artist in the Philadelphia Print Collaborative's Fall Benefit. Tyler honored her as one of the school's two Gallery of Success representatives for 2003-2004. The Gallery of Success is a photography gallery in Mitten Hall on Temple's Main Campus.



Candy DePew ('97) at Temple's Gallery of Success event.

Kaori Kawase, BA Art and MFA Metals '99, was married on September 28, 2003, at the Sangenjaya Catholic Church in Tokyo, Japan. Her website is www.koyotenyork.com.

John T. Lange, BFA Sculpture, recently became Art Curator for Cedars-Sinai in Beverly Hills, CA which has an extensive and diversified collection with works from Picasso, Rauschenberg, Johns, and more. He is working on a new body of work which he will start to show around the L.A. area at the end of the year.

Andrew Tomasulo, BFA Painting, took part in the group show *m.o.* at the Project Room in Philadelphia, summer 2003.

Justin Zaharczuk, BFA Graphic Design, has been breaking into the movie business in California. His latest film is *Bubba Ho-Tep* and stars Ossie Davis. He mentioned Tyler in an interview at movieweb.com.

'98 Jill D'Alessandro, MFA Fibers, was appointed Assistant Curator of Textiles at the de Young Museum in San Francisco, CA. Previous to this appointment, she was manager of the Ethnographic Art Department at Butterfield's Auctioneers for two years.

Che Rhodes, MFA Glass, had simultaneous solo shows during April 2003: *Interface*, at Millennic Glass in Kansas City, MO and installation work at Gallery HQ also in Kansas City. During October and November, 2003, he had an exhibition of recent work at Aegon Gallery, Jones Visual Arts Center, Danville, KY.

'99 Michael Bugler, BFA Graphic Design, has recently launched a website showcasing his fine art photography, www.michaelbugler.com. He is a Senior Designer at Digital Design Works in Gladwyne, PA.

Dan Cutrone, MFA Glass, exhibited work in the group show, *Out of the Fire*, at the Stedman Gallery of Rutgers University. The show was reviewed in the *New York Times*. For the exhibition, four nationally acclaimed artists and distinguished teachers in the Delaware Valley region were invited to select an artist whose work "showed significant potential for artistic growth."

Erin Weckerle, BFA Painting, had a show during October 2003 at Vox Populi in Philadelphia.

'00 Kate Abercrombie, BFA Printmaking, exhibited work in July and August 2003 in the group show, *Fresh: The Vox New Member Show*, at Vox Populi Gallery in Philadelphia.

Kevin Breaux, BFA Photography, has published his first novel, *Breaking the Circle*. *Breaking the Circle* is the first in a series of the Zrydovan Chronicles. The novel is available for direct sale at Xlibris.com. For information, go to his website www.breakingthecircle.com.

Jessica Doyle, BFA Painting, had an exhibition, *Exist*, at the Project Room in Philadelphia that ran from November 8 through December 5, 2003.

Trenton Doyle Hancock, MFA Painting, received a \$20,000 grant in the Houston 2003 Awards program of Artadia: The Fund for Art and Dialogue. He was featured in September 2003 in the PBS series *ART 21: Art in the Twenty-First Century*. He took part in *On the Wall: Wallpaper and Tableau* at the Fabric Workshop and Museum in Philadelphia which ran April through September 2003 and was reviewed in the *New York Times* and the *Philadelphia City Paper*.

'01 Abby Bennett, BFA Graphic Design, had work included in the November 2003 Design Annual of *Communication Arts* magazine.

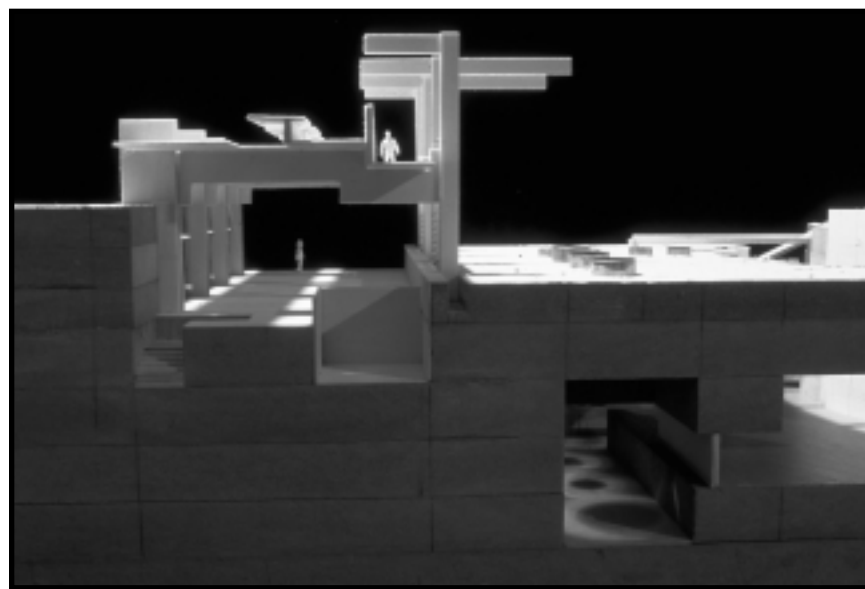
Douglas Boehm, BFA Graphic Design, had an illustration in *Rolling Stone* magazine for a movie review of the American idol movie *From Justin to Kelly*.

Charles Hobbs, BFA Sculpture, was included in the group show *Fresh: The Vox New Member* show at Vox Populi gallery in Philadelphia which ran during July and August, 2003.

Jess Julius, BFA Glass, participated in a group show, *Out of the Fire*, at Rutgers University's Stedman Gallery. The show was reviewed in the *New York Times*. For the exhibition, four nationally acclaimed artists and distinguished teachers in the Delaware Valley region were invited to select an artist whose work "showed significant potential for artistic growth."

Jason Kernevech, BFA Graphic Design, was featured in an article in the *Philadelphia City Paper* in October 2003 with classmate **Dustin Summers**. The two founded The Heads of State, specializing in concert posters with clients such as Tiger Style Records. They have been working with the Scottish band Idlewild on t-shirts and posters and will be coming out with a book presented by *How* magazine which asks each artist to reinterpret the work of an unnamed peer.

Rebekah Maysles, BFA Painting, exhibited work in July and August 2003 in the group show *Fresh: The Vox New Member* show at Vox Populi gallery in Philadelphia which ran during July and August, 2003.



Joseph Mackin ('02) received first prize in the 2003 Vitetta, "Best and Brightest" Competition.

Dustin Summers, BFA Graphic Design, was featured in an article in the *Philadelphia City Paper* in October 2003 with classmate **Jason Kernevech**. The two founded The Heads of State, specializing in concert posters with clients such as Tiger Style Records. They have been working with the Scottish band Idlewild on t-shirts and posters and will be coming out with a book presented by *How* magazine which asks each artist to reinterpret the work of an unnamed peer.

Amanda Tinker, MFA Photography, received a "Window of Opportunity" grant in July 2003 from The Leeway Foundation in Philadelphia. The WOO grant provides short-term, immediate assistance to individual women artists in the Philadelphia area to allow them to take advantage of a specific opportunity. Her grant helped to support framing for work that is to be part of an exhibit at the Woodmere Art Museum.

Danielle Vardakas, BFA Glass, had a piece in the National Liberty Museum Auction and preformed a Martha Graham technique at the Performance Garage in September 2003. She will be showing new works at Ironwood Gallery in Connecticut. She created a mixed media performance installation during the Philadelphia Fringe Festival in September, 2003 and will be creating the stage designs for the Winged Woman Dance Company's fall performances. She teaches dance and visual art throughout Philadelphia, Montgomery County and New Jersey and is an intern with Rennie Harris Puremovement. She shows her craftwork throughout the country as the "Off Center Craft Company."

Tim Wagner, BFA Glass, just finished an assistantship at Virginia Commonwealth University and was included in a group show of glass and mixed media sculpture, *Out of the Fire*, at the Stedman Gallery of Rutgers, the State University of New Jersey. The show was reviewed in the *New York Times*. For the exhibition, four nationally acclaimed artists and distinguished teachers in the Delaware Valley region were invited to select an artist whose work "showed significant potential for artistic growth."

'02 Steve Decusatis, BFA Graphic Design, had work included in the November 2003 Design Annual of *Communication Arts* magazine.

Ilin Hsu, MFA Metals, participated in the traveling group show during 2002 - 2003 entitled, *Hidden Passion*, which highlights the innovations of metalwork by women of Japan, Korea, and Taiwan.



Suzanne Fee ('03) joined the Bailey Group.

'03 Suzanne Fee, BFA Graphic Design, joined The Bailey Group as a junior designer. Based in Plymouth Meeting, PA, The Bailey Group was founded in 1985 and is today one of the largest strategic identity and design firms in the region.

Anne Gant, MFA Glass, participated in the group show *Nature Preserved, Altered, Invented* at the Schuylkill Center for Environmental Education, April through June, 2003.

IN MEMORIAM

Almitra David, 22-year partner of Dean Emeritus Rochelle Toner, passed away on November 9, 2003. She was a poet and a Spanish teacher at Friends Select School in Philadelphia. She was the author of two widely reviewed books of poetry, *Impulse to Fly* and *Between the Sea and Home*. In 2000, *Writer's Digest* named her among "Ten Poets to Watch." She is survived by Toner; two daughters: Erica David and Elisa Hammes and a son: Paul David; and two grandchildren. A memorial service was held on November 22, 2003 at the Friends Meeting House, 15th and Cherry Streets, in Philadelphia.

David Matthew Hook, BFA Graphic Design '89, passed away in a drowning accident on July 23, 2003. He is survived by his sister Janet H. Mansir of Texas.

Sheryl Johnson, BFA Painting '81, passed away in June 2003. After graduating from Tyler, she lived in New York City where she interned at Atelier Royce as a paper making specialist and worked as an artists' assistant. She relocated to Northern California in the early 1990s where she became an ace software beta-tester. Most recently she was living and painting in Junction City, OR. Memorial services were held over the summer in Point Reyes, CA; Tillamook, OR; and New York City. She is survived by her sister Celia of Philadelphia and friends and family on both coasts.



Sheryl Johnson ('81).

REMEMBER WHEN



On the left side of this issue's Remember When photograph is Dean Charles Le Clair. We are wondering who else appears in the photograph and what year it was taken. Please call Jenifer Trachtman at 215-782-2716; send a letter to: *Gestures*, 7725 Penrose Avenue, Elkins Park, PA 19027; or send email to: jenifer@temple.edu.



Aileen Hart Dannenberg (BFA '42 and BSEd '49) was the first to phone about last issue's Remember When photograph. She is pictured with her husband, Dr. Arthur Dannenberg. He is at the upper right in a wide-brimmed straw hat with glasses near the window. She is next to him, holding a cup and also wearing glasses. Joan Leff Miller (BFA '52) wrote a note that the photograph was taken during the 1951 - 52 academic year. She remembers the girl in the white hat, third from left in the front row, as Arlene Basch Siesser (BFA '52) from New York City. The girl in the striped shirt next to Arlene is Dore Heidenberg who attended Tyler for only one year. Both were roommates of Joan's at different times. Mary Espy Marvin (BFA/BSEd '54) phoned and confirmed Arlene Basch and Dore Heidenberg in the photograph. She further identified Sue Below Heineman (BFA '53) on the very right with a band in her hair. The eyes and eyebrows of Mary Marvin's roommate, Mary Louise Santilli, are pictured behind the Dannenbergs. Next to Mary Louise is Ricky Lafean (BFA/BSEd '54) in the beret and then Mary herself. Finally, we received a letter from Sue Below Heineman who confirmed that it is she on the very right. She remembers that event as a Halloween party in 1949 at the women's dormitory located at 74th and 12th Streets (well before Tyler built its on-campus dormitory). She added that the person to her left may be Lily Hirsch from New York City and that the person between Dore Heidenberg and Aileen Dannenberg is Fannie Christoff, also from New York City.

SEND IN YOUR NEWS

Alumni Notes will be printed in the spring 2004 issue of *Gestures*. All contributions received before June 30, 2004 will be acknowledged in the Honor Roll section of the fall 2004 issue of *Gestures*.

NAME

ADDRESS

HOME TELEPHONE

OTHER TELEPHONE

EMAIL

WEBSITE

OCCUPATION

EMPLOYER

EMPLOYER ADDRESS

YEAR GRADUATED DEGREE MAJOR

NEWS

.....

.....

.....

.....

.....

.....

My tax-deductible contribution to Tyler School of Art in the amount of \$_____ is enclosed for:

Please charge my credit card (VISA/MC/DISCOVER) with an expiration date of _____ in the amount of \$_____ for:

- Tyler Annual Fund
- Friends of the Temple Gallery
- Jane D. Bonelli Art Education Award
- Graphic Design Interactive Initiative Fund
- Herman S. Gundersheimer Scholarship for Academic Excellence Fund
- Kristin Huggins Memorial Scholarship Fund
- John Christopher Knowles Scholarship in Architecture Fund
- Allen Koss Memorial Award Fund
- Jack Malis Endowed Scholarship Fund
- Ann and Jack Moskovitz Art Education Fund
- Senior Painting Award Fund (initiated by Lisa Yuskavage and Matvey Levenstein)
- Rudolf Staffel Award in Ceramics Fund
- Rochelle Toner Scholarship Fund
- The Stella Elkins Tyler Endowment Fund for Scholarships
- Dorothy H. Ward Memorial Scholarship Fund

There are many ways to communicate with us! Send your alumni notes or your changes of address to jenifer@temple.edu via e-mail. You may also log onto the Temple University Alumni Relations Web Page at: www.temple.edu/alumni_friends in order to get more information about the Tyler Development program, to submit your news to the newsletter electronically, to make a gift online to Tyler School of Art, or, to sign up for the Temple online alumni community. Of course, alumni notes, changes of address, and contributions can be sent through the mail to: *Gestures*, Tyler School of Art, 7725 Penrose Avenue, Elkins Park, PA 19027.

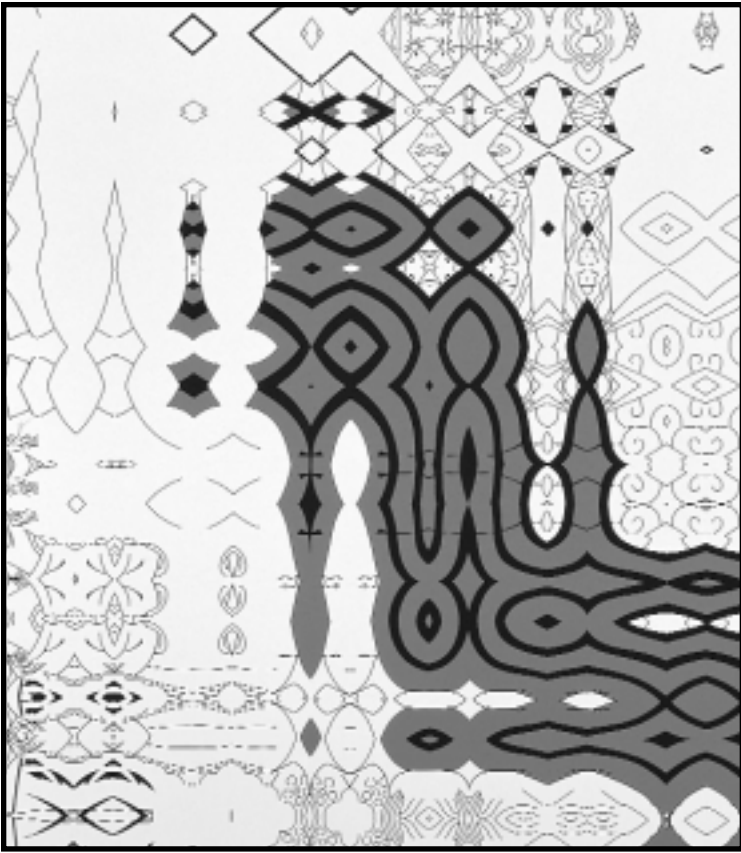


Photo: D. James Dee. Courtesy Ronald Feldman Fine Arts, New York

Carl Fudge ('90), "Overflow", acrylic on canvas, 82" x 72".

January 28, 2004

Deadline to register for the Weekend Art Workshop. The workshop offers courses for adults and high school students on Saturdays and Sundays from early February through mid-April. Call 215-782-2828 or 215-782-2760 for more information.

February 19, 2004

Tyler Alumni Reception in Seattle in conjunction with the College Art Association Annual Conference, 5:30PM - 7:00PM. Sheraton Seattle Hotel and Towers (fourth floor), 1400 Sixth Avenue, Seattle, WA.

February - March 2004

Analog Click Click, Temple Gallery. Douglas Boehm, Lia Cook, Carl Fudge, Matt Haffner, E.J. Herczyk, Mark Lueders, Margo Margolis, Cindy Poorbaugh. Opening reception: First Friday, February 6, 2003, 7:00PM - 9:00PM.

March 16 - May 22, 2004

MFA Thesis Exhibitions, Temple and Tyler Galleries. Call 215-782-2776 for more information. Exhibitions change weekly.

April 6 - 17, 2004

Annual Student Exhibition, Tyler Campus.

April 3, 2004

Spring Open House and Admitted Students Reception, 11:00AM - 4:00PM. Call 215-782-2875 for further information. Bring the prospective Tyler students in your life!

May 20, 2004

Tyler Graduation Ceremonies. Tyler Campus, 2:30PM.

June 4 - August 6, 2004

Something about Nothing (part of a City-wide initiative, The Big Nothing, sponsored by the ICA), Temple Gallery. Inspiration on black holes from the John Wheeler Archive at the American Philosophical Society in Philadelphia. Opening reception: First Friday, June 4, 2003, 7:00PM - 9:00PM.



The Temple Gallery is located at 45 N. Second Street in Philadelphia. Phone: 215- 925-7379. Hours are Wednesday - Saturday 11AM to 6PM (11AM to 9PM on the First Friday of each month).
The Tyler Gallery is located on the Tyler Campus, 7725 Penrose Avenue and is open from 10AM to 5PM, Tuesday - Saturday. Phone: 215-782-2776.

This "Alumni/ae Panel" is a regular feature of *Gestures*. If you are interested in participating send samples of your work to the editor.

Printed by Garrison Printing

Photographers: D. James Dee, Robert Dias, Vincent Scarno, Paul Warchol

Contributors: Ralph Howard, Doris Izes, Jenifer Trachtman

Jeremy Holmes, Assistant

Tyler Design Workshop, Director (BFA '94)

Design and Production

Jenifer Trachtman

Editor

John Woodin (MFA '90), Treasurer

Paula Winkur (BFA and BSED '58)

Bob Winkur (BFA '56)

Carole Stinton-Broad (BFA '94)

Cole Schenk (BFA '58)

Charlotte Schatz (BFA '69)

Joseph Powell (BArch '85)

Amy Orr (MFA '89)

Mary Anne Morgan (BFA '65)

Nancy McDonald (MFA '90), President

Deborah Enea (MA '95)

Jessica Doyle (BFA '00)

Leah Douglas (BFA '85)

Patricia Dougherty (BFA '82), Vice President

Nancy Citrino (BSED '85)

Carmina Cianculli (BFA '80)

Michael Buczala (BFA '88)

Edie Tanis Brenna (BFA '81)

Arlene Blanck (BFA '96)

Rachel Bell (BFA '95)

Frank Baseman (MFA '83)

Susan Altman (MFA '83)

Tyler Alumni Association Board

Hester Stinnett

Acting Dean

alumni/ae and friends.

Gestures is published two times a year for

www.temple.edu/tyler/home

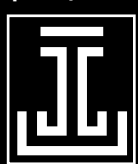
215-782-2716

Elkins Park, PA 19027

Temple University

Tyler School of Art

TYLER GESTURES



Natalie Charkow ('56), "Conversation," limestone, 18.5" x 46" x 22", 1975-76.



Non-Profit
Organization
U.S. Postage PAID
Philadelphia, PA
Permit #1044