

2010 Tyler School of Art Architecture Freshman Undergraduate Portfolio Requirements

Admission to the architecture program is highly selective. If the student is not selected for architecture but meets the general requirements for admission to Temple University and wishes to be considered for admission to architecture, he/she may submit a portfolio of artistic or creative work, as per requirements, procedures and assessment criteria specified by the Architecture Department.

Portfolios are to be uploaded at www.temple.slideroom.com. Follow the instructions on the SlideRoom website to do this. SlideRoom requires an additional fee for this service.

The portfolio should contain the following:

1 At least five samples of self selected creative work

Each portfolio must contain at least five samples of your creative work. This work should clearly demonstrate your creative capacities in a variety of media. Applicants are strongly discouraged from submitting technical drawings unless these are part of a creative process.

Assessment of this work will be based on the following:

- Is there evidence of observational capacity in the work submitted? This means that at least two of the pieces should be drawn from direct observation (not from photographic references).
- Is the work creative?
- Is there evidence of craft, care and technical competence in the work submitted?

In addition to the above, applicants are required to submit the following:

2 A Graphic Exercise

Produce a graphic representation in response to the following quote:

" . . . It was the hidden side of everything that intrigued me, the hidden side of gardens, the hidden side of streets, the hidden side of towns, the hidden side of televisions, the hidden side of dishwashers, . . . But when I managed to get to the hidden side, I realized that what I was looking for was the hidden side of the hidden side, or rather, the hidden side of the hidden side of the hidden side . . . "

from Italo Calvino, "The Mirror, the Target," in
Numbers in the Dark, trans. Tim Parks (New York: Pantheon, 1995)
http://www.ruanyifeng.com/calvino/2008/12/the_mirror_the_target_en.html

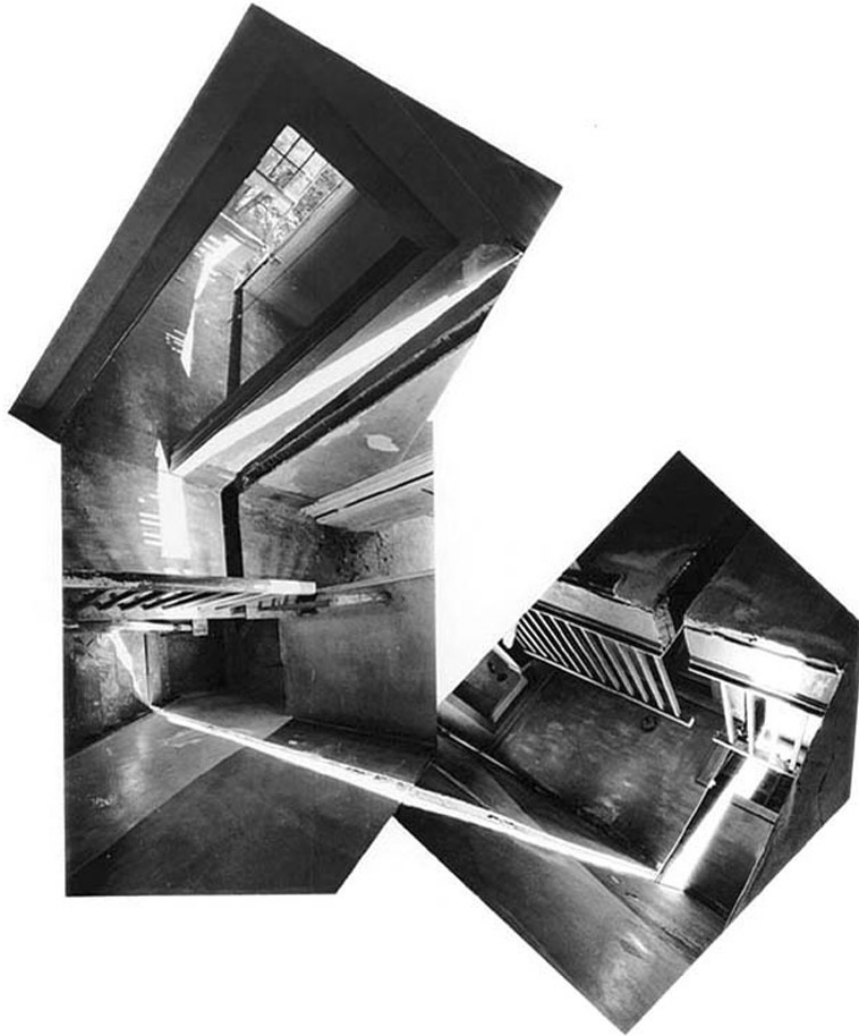
This is an artistic exercise and there is no correct or incorrect answer. Your work may be in any medium, and must be part of the portfolio of images uploaded through Slideroom.

Assessment will be based on the following:

- Does the representation communicate something about the quote, such as scale and quality of space, duration and sequence, movement etc.?
- Are the medium and techniques used appropriate, such as layering, cutting, overlapping, unraveling, inferring etc.
- Are the medium and techniques competently used?
- Are the medium and techniques creatively developed?

3 A Writing Exercise

Carefully look at the image on this page. What does this image convey to you? Using maximum 500 words, complete a piece of creative writing that explores your response to the image. There is no correct answer. This document must also be uploaded onto SlideRoom.com as part of your total portfolio.



Gordon Matta-Clark, "Splitting," (1974)
www.artnet.com

Assessment will be based on the following criteria:

- Does the writing communicate something about the image, i.e. is it more than merely a description?
- Does the writing frame or interpret the image so that the reader sees it in a new, unexpected way?
- Is the writing creative?
- Is language used competently in the writing (structure, spelling, grammar, punctuation etc.)?