

TEMPLE

Fall 2007

review

ACCESS TO
EXCELLENCE

The 125th Anniversary Campaign
for Temple University



INSPIRE TEMPLE UNIVERSITY'S NEXT GENERATION

Make a gift to Temple today.

Whether you give to a particular school, college or department, student scholarships, or any other worthy university designation, 100 percent of your gift will be directed as you indicate.

Every gift is inspirational.



How to Give

Temple University accepts gifts made by check or credit card, as well as gifts in the form of securities and property transfers. You can also pay your gift in installments throughout the fiscal year using a major credit card. All gifts to Temple are tax deductible to the extent allowed by law.

Matching Gifts

If you or your partner work for a company with a matching gift program, you can double or even triple your support by enclosing your employer's matching gift form with your contribution.

Online Giving

Online giving is fast and convenient with a credit card or e-check. To make your gift now, visit myowlspace.com.

Temple University
Institutional Advancement
1938 Liacouras Walk
Philadelphia, PA 19122
215-204-1001
myowlspace.com

**A Magazine for
Alumni and Friends of
Temple University**

**Vice President,
Institutional Advancement**
STUART P. SULLIVAN

**Associate Vice President,
University Communications**
MARK EYERLY, SCT '81

Editor
INGRID THACK, CLA '99

Associate Editor
JOSEPH McLAUGHLIN

Assistant Editor
ALBERTA SMITH

Design
TEMPLE UNIVERSITY
CREATIVE SERVICES (001-0708)

Address Changes and Gifts

1938 LIACOURAS WALK
PHILADELPHIA, PA
19122-6027
800-882-7655

Correspondence
TEMPLE UNIVERSITY
TEMPLE REVIEW
1601 N. BROAD ST.
USB 601
PHILADELPHIA, PA
19122-6099
215-204-6445

Email:
trreview@temple.edu

Web site:
www.temple.edu/temple_review

TEMPLE REVIEW IS PUBLISHED
BY TEMPLE UNIVERSITY OF THE
PENNSYLVANIA COMMONWEALTH
SYSTEM OF HIGHER EDUCATION.

© COPYRIGHT 2007 BY
TEMPLE UNIVERSITY

Temple University is committed to a policy of equal opportunity for all in every aspect of its operations. The University has pledged not to discriminate on the basis of race, color, sex, age, religion, national origin, sexual orientation, marital status, or disability. This policy extends to all educational, service, and employment programs of the University.

COVER PHOTO: JOSEPH V. LABOLITO

FEATURES



12 Access to Excellence

Temple stands at the cusp of an unprecedented period of advancement. The university's first comprehensive campaign, with a goal of \$350 million, aims to reinforce all that makes Temple great while thrusting it into the upper echelons of urban research universities.

24 Baptist Temple: An Icon Reborn

The Baptist Temple has graced the heart of Main Campus for more than 115 years, providing a landmark venue for the university and hosting luminaries such as Franklin D. Roosevelt and Martin Luther King Jr. Soon, this historic structure will be transformed into a community resource for all of North Philadelphia.



DEPARTMENTS

- | | | |
|------------------------------|------------------------------|------------------------|
| 2 Mailbox | 30 The Conwell Spirit | 36 Alma Matters |
| 3 From the Bell Tower | 32 Student View | 47 In Memoriam |
| 4 Campus News | 34 TUA Forum | 48 Picture This |

MAILBOX



Summer 2007

Haven't I Seen You...

I just finished reading *Temple Review* and was astonished by the striking resemblance of several students' photos to students who attended Temple when I studied there many years ago. Are students today more real than they were in past decades? A very strong reality vibe shines through and I dig it enormously.

As a suggestion for an upcoming issue, I'd enjoy reading more articles about basic research in the life sciences. Just think of all there is to know about starfish that remains unknown at present!

JEFF FENNER, SBM '93
Exeter, Pa.

Airport Impact

You did a great hospitality story about some great people ("Hosts to the City," Summer 2007), but you left out the city's front door — the airport. It impacts Philadelphia to the tune of 34,000 jobs, 32 million passengers annually, 120 non-stop destinations, a \$2 billion capital program, lots of environmental stewardship and so much more, with Temple grads in several key positions.

How about an airport story in your future?

CHARLES J. ISDELL
CLA '72, EDU '86
Philadelphia

An Issue to Cherish

I always enjoy reading alumni profiles in *Temple Review* and save issues for the various stories of determination and excellence they contain. I would like to congratulate you on producing an exceptional issue this summer. From the cover to the back page, it is an accurate reflection of the diversity of culture, ideas and careers that one can find at Temple.

Everything, from news of the First Ladies Water Garden in Washington, D.C. to "Opera at the Apex," reinforces my sense of pride for being a member of this community. As a graduate student in the English department, it is very easy to focus strictly on close textual analysis and readings. This issue is a portrait of the excellence that exists throughout the breadth of Temple's community. It complements my scope of experience in my department.

I will cherish this issue not just for the great stories of leadership and success of our alums, but also for the vibrant profiles of current students. The respective journeys of Jackie Shogan and Michelle Arnold are an inspiration.

TARANNUM LAILA, CLA '09
Philadelphia

Key to Abbreviations

School and College Codes

AMB	Ambler College
CHP	College of Health Professions
CLA	College of Liberal Arts
CST	College of Science and Technology
DEN	School of Dentistry
EDU	College of Education
ENG	College of Engineering
HON	Honorary Degree
LAW	Beasley School of Law
MED	School of Medicine
MUS	Boyer College of Music and Dance
PHR	School of Pharmacy
POD	School of Podiatric Medicine
SBM	Fox School of Business
SCT	School of Communications and Theater
SSA	School of Social Administration
THM	School of Tourism and Hospitality Management
TYL	Tyler School of Art

We'd like to hear from you!

Temple Review is a quarterly magazine that brings news and features about Temple University to nearly 240,000 alumni and friends. But we need your feedback to make each issue complete. The Mailbox is a platform for our readers to sound off on the contents of *Temple Review* and other topics related to the university.

Send your letters to *Temple Review*, 1601 N. Broad St., USB 601, Philadelphia, PA 19122. You can e-mail us at treview@temple.edu, or you can fax your thoughts to 215-204-4704. Please include an address and daytime phone number with your submission, which may be edited for length and clarity.

Lew Klein alumni in the media awards

October 30, 2007

Alumni Hall of Fame:

Barbara Attie '96

Bill Daly '77

John Dotson, Jr. '58

Linda Munich '75

Bob Pantano '71

Marc Rayfield '85

Excellence in the Media Award:

Dick Vermeil

11:30 a.m.

Great Court • Mitten Hall

**To purchase tickets or
for more information,
please call 215-204-3055.**



FROM *the bell tower*

Ambition. Determination. Innovation.
Inspiration.

These qualities are evident in the Temple community as we undertake an ambitious agenda to position the university as a global leader in higher education research and service. They are also characteristic of generations of Temple graduates who have built upon their educational foundation to achieve remarkable success in the world.

Temple alumni have moxie. You are self-starters who make your way in the world through hard work and persistence and meet challenges others would not dream to undertake. You're proud of what you've accomplished, and you have a right to be.

Temple, too, is proud to have played a part in your success. And now, more than ever, we hope you will share your unique talents and resources to help your alma mater reach even greater heights.

Great universities thrive not only because of the strength of their faculty and the talent of their students, but also through the dedication of their alumni. Students from the past build the future through a concrete and unyielding commitment to the school that prepared them for personal success.

At Temple, many of you are already taking the lead, as evidenced by increasing alumni service on boards, councils and advisory committees across campus. The physical upgrades and enhanced reputation that have marked the university's last decade have gone hand in hand with a significant rise in alumni involvement and leadership. More than 1,500 alumni and friends currently dedicate their time and resources. We greatly appreciate their service. And we must do more.

Temple is poised to become one of the leading urban public research universities in the country. We have the energy, the desire and the intellect that this ascendance will require. But getting there will require a more pervasive culture of engagement and philanthropy. On an individual level, that means personal commitment and a deep appreciation for who you are and how you got there.

There are many ways you can help. Through advocacy, you can spread the Temple story to prospective students, community members and leaders around the nation and world. Through service, you can offer your talents by participating in Temple programs and activities. And through investment, you can offer financial support that creates and augments scholarships, buildings, research and endowment.

With each of these deeds, you will help Temple attain the extraordinary level of achievement it is capable of, while preparing future generations to achieve the same levels of success as you have.

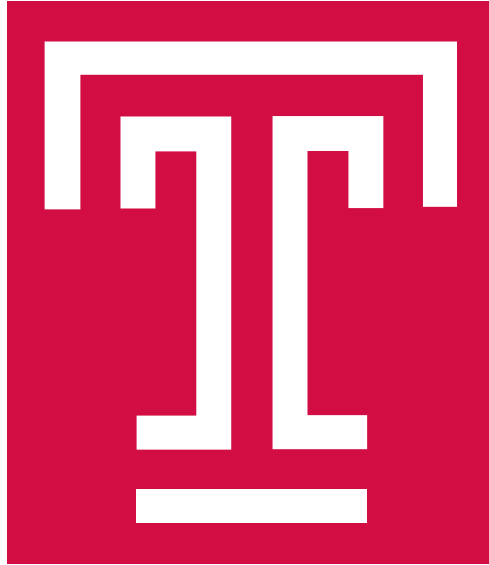


JOSEPH V. CARLITO

A handwritten signature in black ink that reads 'Ann Weaver Hart'.

Ann Weaver Hart
President, Temple University

ACCESS
to
EXCELLENCE



THE 125TH ANNIVERSARY
CAMPAIGN FOR TEMPLE

“Temple stands at a remarkable point in its history. Never before have we moved forward with such momentum; never before have so many opportunities for progress stood so close within our reach.”

—ANN WEAVER HART, PRESIDENT

STORY BY GREG FORNIA



As founder Russell H. Conwell envisioned, Temple University provides students of every background and means—from around the corner and around the world—with access to an education of remarkable quality. On the eve of its 125th anniversary, Temple University is growing stronger, expanding the opportunity it provides, reaching new students, families and communities and advancing to a new level of excellence.

“Temple stands at a remarkable point in its history,” says Temple President Ann Weaver Hart. “Never before have we moved forward with such momentum; never before have so many opportunities for progress stood so close within our reach.”

Perhaps the strongest symbol of Temple’s momentum is the university’s most ambitious fundraising campaign in its history, Access to Excellence: The 125th Anniversary Campaign for Temple. Access to Excellence began on July 1, 2002 and launched publicly on Oct. 5, 2007. It aims to raise \$350 million for five key priorities: maintaining affordability and expanding access for students; attracting and retaining the most talented scholars; creating outstanding campus environments for teaching and learning; expanding the research enterprise; and continuing Temple’s powerful role in the

community and throughout the region.

Temple is moving forward on each of these fronts. The campaign is designed to secure funding for initiatives, but also to build a stronger culture of philanthropy across the university community that will sustain Temple in the future.

“With the launch of Access to Excellence, we are making Temple history,” says Daniel H. Polett, chairman of the university’s Board of Trustees. This is the most ambitious campaign we’ve ever undertaken and a momentous opportunity to move our university forward.”

Over the last several decades, Temple has achieved a remarkable record of progress with limited resources. Currently, Temple’s appropriation from the Commonwealth of Pennsylvania meets only about 18 percent of its revenue needs. In addition, the university’s endowment is modest compared to that of most of its peers, a reality that makes the university more dependent on tuition. Private support is vital for Temple to continue investing in the excellence of its programs and faculty while maintaining its affordability.

As philanthropy for the university increases, each new gift means new possibilities for Temple and new opportunities for our students to succeed.



“This is the most ambitious campaign we’ve ever undertaken and a momentous opportunity to move our university forward.”

—DANIEL H. POLETT, BOARD OF TRUSTEES CHAIR

SUPPORTING STUDENTS

There has never been a greater demand for a Temple education. Temple’s enrollment has grown by several thousand over the past half-dozen years, reaching more than 34,000 students. This tremendous growth has coincided with the steady improvement in the academic profile of entering students, as more bright and talented students discover the exceptional value of a Temple education.

True to its historic mission of providing access to education, Temple has accomplished these gains in enrollment while preserving the racial, ethnic and geographic make-up of its student body.

As diverse as Temple students are, most of them share one trait: financial need. More than 70 per-

cent of Temple’s full-time undergraduates require financial aid. Temple’s current financial aid programs cannot meet this need in full, so many Temple students graduate with significantly more debt than students from comparable universities. Temple’s tuition is lower than the Pennsylvania State University and University of Pittsburgh, yet the average Temple undergraduate leaves the university more than \$27,000 in debt, compared to \$23,500 at Penn State and \$17,100 at Pitt.

Campaign funds will help strengthen endowed scholarships for undergraduate, graduate and professional students, improving Temple’s position as it competes to enroll highly qualified and highly motivated applicants.

“My wife and I have met each of the recipients of the scholarships we created, and they have been outstanding, inspiring young people. We are proud to be a part of their success.”

—COL. JAMES S. WHITE, UNIVERSITY TRUSTEE

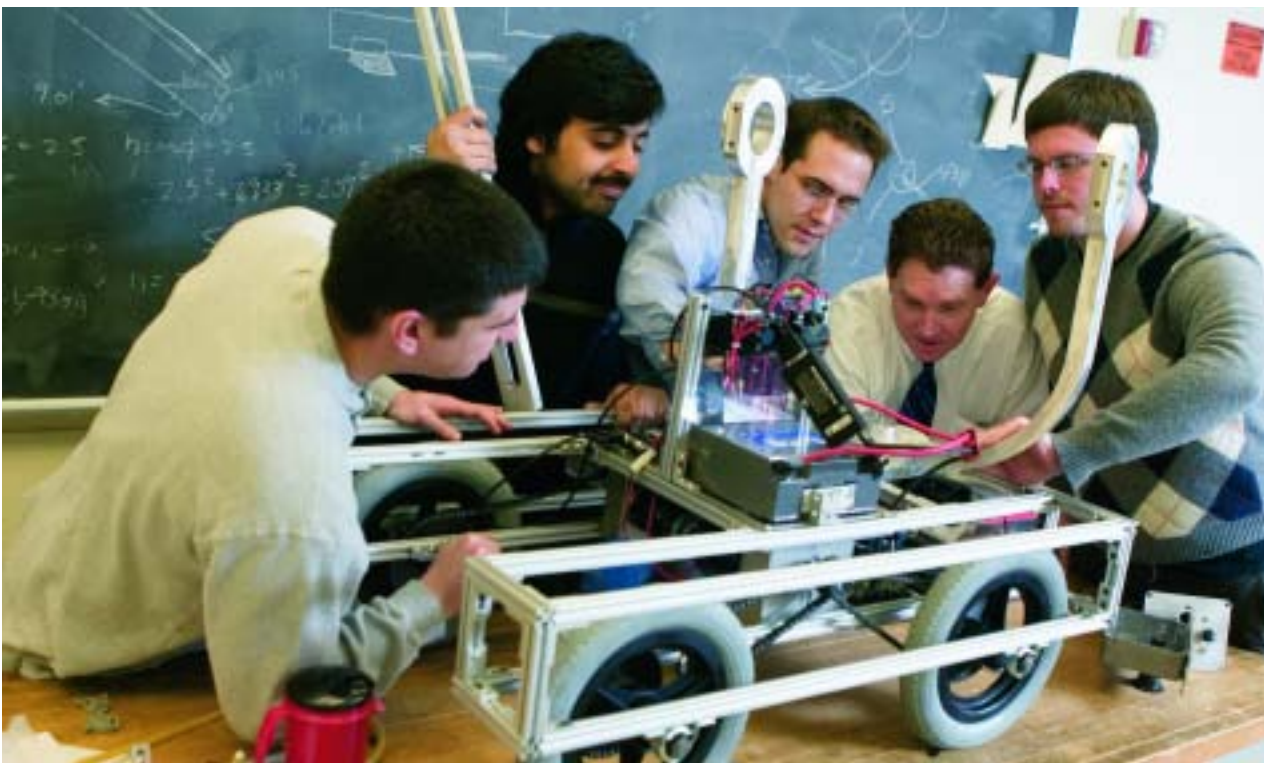
“My wife and I have met each of the recipients of the scholarships we created, and they have been outstanding, inspiring young people,” says university trustee Col. James S. White. “We are proud to be a part of their success.”

With a gift made through her family’s foundation that named the Maurice H. Kornberg School of Dentistry, Madlyn Abramson seeks to help the generations of Temple students following in her father’s footsteps. “Our gift is in honor of my father,” she says. “It was a great accomplishment for him to get through school. We really wanted our support to go to scholarships for students in need.”

SUPPORTING FACULTY

A superb education depends on talented and dedicated faculty. Temple faculty shape the curriculum, drive the research program and bring recognition and funding to the university. They are responsible for the academic rigor that stands behind the value of a Temple degree. Just as important, they inspire students to achieve lasting success.

Temple faculty have never been stronger, as a generation of outstanding new teachers and researchers join those who have served the university for years. Temple is hiring faculty —



KELSH WILSON DESIGN

from young professors to highly regarded senior scholars—at a rate unprecedented in its history and rare in higher education today.

These academics choose Temple because it offers an unusually diverse and exciting community and because Philadelphia is a very attractive destination. Yet, the university must do more to attract and retain outstanding scholars.

Temple will strengthen its position to compete for and to retain outstanding faculty members, particularly those of senior rank, by creating and expanding the number of endowed and term professorships and chairs it offers. Campaign funds will also support programs that advance exceptional teaching.

Endowed professorships stand out as a particularly powerful tool for recruiting candidates at the very top

of their fields. “At some institutions, each endowed professorship is one of many,” says Stuart P. Sullivan, vice president for Institutional Advancement. “At Temple, one new endowed position can propel an entire department to new prominence.”

Leonard Barrack, SBM '65, LAW '68 chairman of the campaign and a contributor to an endowed professorship and other initiatives in the Law School, understands how philanthropy can move Temple forward. Says Barrack: “We give to Temple because we believe in Temple, we have confidence in its leadership, and we see very clearly the difference philanthropy makes in the lives of its faculty and students.”

SUPPORTING FACILITIES

Alumni visiting Temple after years are amazed by the progress they see. New construction and land-

Inspiring Spaces:

TEMPLE'S MAJOR BUILDING PROJECTS



BALLINGER

Rising on Broad Street, across from the existing medical complex, the 450,000-square-foot, \$160 million new **MEDICAL SCHOOL BUILDING** will become the school's primary teaching and research facility. Floors one through four will house classrooms and laboratories for medical education; floors five through 11 will provide state-of-the-art space for research. Its advanced laboratories will

expand research activities, while an interdisciplinary library will support learning and collaboration across medical and health professions.

Named in recognition of a \$15 million gift from Gisela and Dennis Alter, **EDU '66**, the 250,000-square-foot, \$50 million **ALTER HALL** will feature advanced technology

throughout, with “smart” classrooms and a business simulation lab where students will learn to trade securities and solve simulated finance and marketing problems. The new seven-story building will connect to Speakman Hall, providing a home to all of the Fox School's departments, as to well as to the affiliated School of Tourism and Hospitality Management.



MICHAEL GRAVIES AND BERT HILL

Relocating from Elkins Park, Pa., the new 236,000-square-foot, \$75 million home for **TYLER SCHOOL OF ART** will house studio, exhibit, classroom and office spaces. When completed in January 2009, the structure will provide Tyler's faculty and students

“We are bringing great architecture to campus. These are not just functional boxes, but the kind of inspiring and memorable buildings our students and faculty deserve.”

—MITCH MORGAN, UNIVERSITY TRUSTEE

CARLOS JIMENEZ STUDIOS



with new opportunities for interdisciplinary collaboration and a location that is ideal for stimulating greater community outreach. The building's proximity to Temple's other arts-related schools and colleges will create an arts enclave for Temple and a northern anchor for Philadelphia's Avenue of the Arts. A soaring glass atrium will connect the new building to Presser Hall.

A new 17,00-square-foot, \$6.5 million addition to the west side of **PRESSER HALL** will include classrooms, two private teaching

studios, office space and a conference room, as well space for the building's mechanical controls and a much-needed loading dock accessible from 13th Street. The second floor will be built as an open shell slated to become state-of-the-art practice rooms and rehearsal space. Presser Hall's new entrance will be through the large atrium on Norris Street that will connect what is currently the back of Presser Hall and the new Tyler School building.

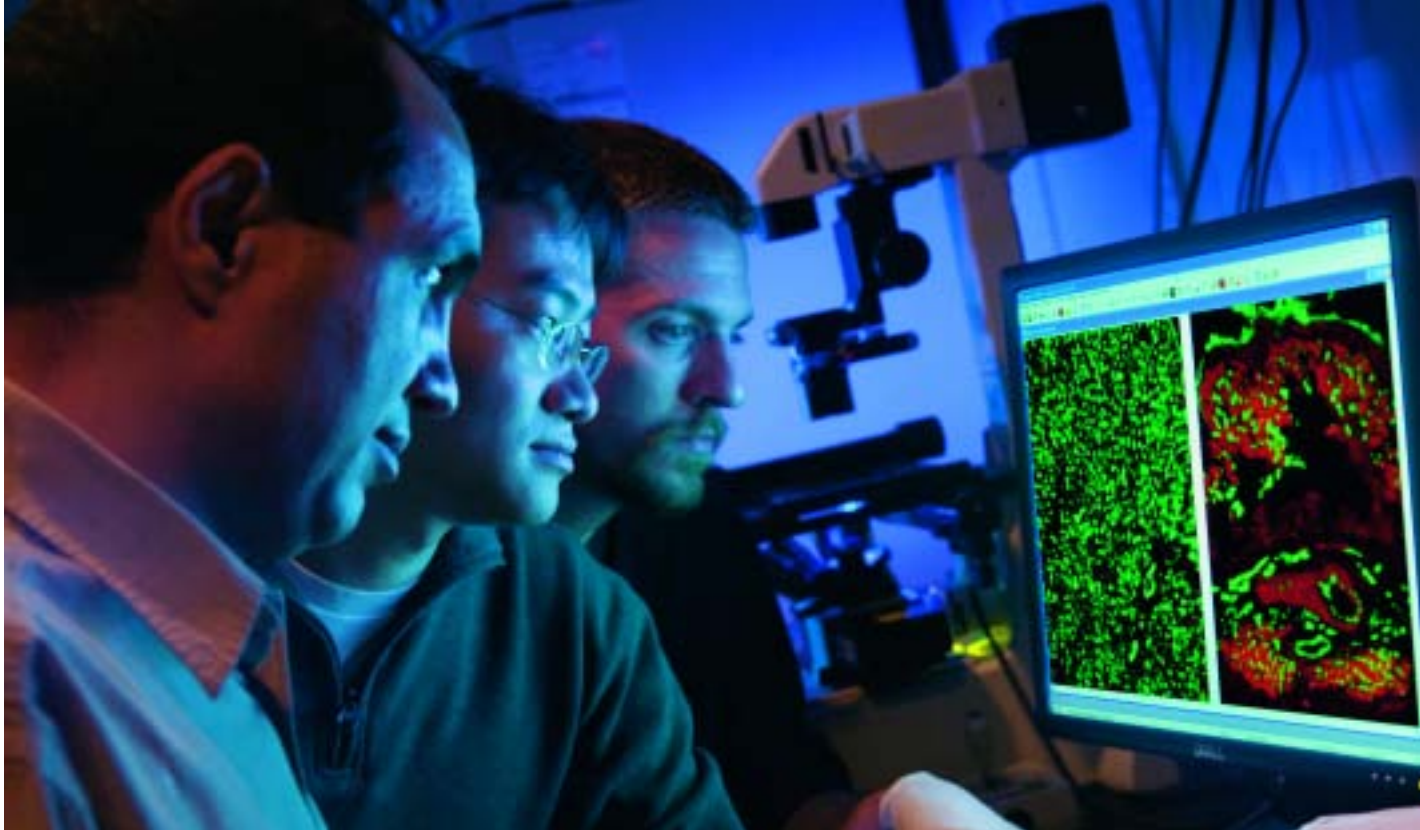
CARLOS JIMENEZ STUDIOS



FRANZ HILLER



The historic **BAPTIST TEMPLE** has seen its interior support structure and exterior roofing, windows and masonry restored during the past year. The next phase of construction — completing a \$29 million renovation project — will create a soaring performing arts and special event space. For more information on the Baptist Temple renovation, see page 24.



KELSH WILSON DESIGN

“We give to Temple because we believe in Temple, we have confidence in its leadership, and we see very clearly the difference philanthropy makes in the lives of its faculty and students.”

—LEONARD BARRACK, SBM '65, LAW '68, CAMPAIGN CHAIR

scaping have resulted in a dramatic leap forward in the quality and beauty of the university’s campuses. These changes reflect more than \$175 million in investments in the past five years, and \$225 million in further improvements are planned for the near future.

What’s more, Temple’s investment has spurred more than \$200 million in private development around its campuses. Students, as well as neighbors, enjoy new shopping and entertainment options near Main Campus. Right now, Temple’s Main Campus and surrounding blocks are home to more than 10,000 residential students. That is an increase of almost 7,000 students since 2000. “We

have created an exciting and safe environment,” says Theresa Powell, vice president for Student Affairs. “Temple is alive with activity 24 hours a day.”

With funding from the campaign, Temple is building three new flagship facilities: a building for the School of Medicine; a Main Campus home for the Tyler School of Art; and Alter Hall, which, along with the existing Speakman Hall, will provide a home to all of the Fox School’s departments. Campaign funds will also be used to complete the restoration of the Baptist Temple, the university’s symbolic home.

“Our gift is in honor of my father. It was a great accomplishment for him to get through school. We really wanted our support to go to scholarships for students in need.”

—MADLYN ABRAMSON, KORNBERG SCHOOL OF DENTISTRY

“We are bringing great architecture to campus,” says Mitch Morgan, a university trustee and chair of the facilities committee. “These are not just functional boxes, but the kind of inspiring and memorable buildings our students and faculty deserve.”

SUPPORTING RESEARCH

The level of research and scholarship at Temple is growing rapidly. Temple is emphasizing research in hiring and tenure decisions and investing millions in seed money to help faculty secure external funding. The result: Sponsored project expenditures have grown from less than \$100 million to more than \$145 million in five years.

“Across this university, I see people engaged in groundbreaking projects clearly relevant to real-world issues,” says Jeffrey Featherstone, chair of Ambler College’s Department of Community and Regional Planning, “from sustainable development to high-tech drug delivery techniques to teen suicide prevention.”

A thriving program of research, scholarship and creative activity attracts top faculty and generates new learning opportunities for students. Undergraduates at Temple can take part in major lab studies or participate in groundbreaking exhibits and theatrical productions. “Research at the undergraduate level is an invaluable opportunity,” says Peter Jones, vice provost for undergraduate studies, “particularly for students who will be

Temple’s First Comprehensive Campaign

Access to Excellence is Temple’s first comprehensive fundraising campaign. Begun on July 1, 2002, the campaign seeks to secure support for the university in many forms. Gifts of all kinds and sizes will count toward the campaign’s total goal of \$350 million, including:

- Commitments to endowment priorities such as scholarships, professorships and programs;
- Commitments to capital projects, such as construction of new facilities; and
- Gifts to fund academic, research and community programs.

Every gift to Temple, no matter the size, over the course of the campaign, counts toward the campaign goal.

Alumni and friends may designate their gift to any school, college, program or purpose within Temple University or may make unrestricted gifts, a form of investment particularly useful and valuable to the university. Gifts for all purposes received before Dec. 31, 2009 will count toward the campaign total. For more information, visit www.temple.edu/accesstoexcellence.

competing for places in graduate and professional schools.”

Temple’s research also supports business sectors vital to the economy of greater Philadelphia, including financial services, chemical, pharmaceutical and hospitality.

With campaign funding from both institutions



KELSH WILSON DESIGN

and individuals bolstering an expanded research agenda, Temple will be well positioned to contribute even more to the economy and quality of life in the region.

SUPPORTING TEMPLE AND ITS COMMUNITY

Part of Temple's mission is to address pressing needs in the community and throughout society. Through research centers, partnerships and outreach efforts, Temple faculty and students take their passion and knowledge beyond academia.

Faculty advise civil officials on emergency preparedness and participate in one of the nation's most successful community arts programs. The Office of Partnership Schools works with public schools in North Philadelphia to implement comprehensive educational reform. Temple law students offer free legal assistance and coach student mock trial teams, while dental students

treat patients locally, in rural Pennsylvania and elsewhere.

The Temple University Health System (TUHS) provides superb healthcare to patients across the region, including more than \$60 million in un-reimbursed care to uninsured and underserved families in neighboring communities.

"In so many ways, Temple is a university that makes a difference. That's why I am proud that my support makes a difference to Temple," says Lois Brodsky, *EDU '57*, a contributor to the College of Education.

Temple also plays a vital role in the regional economy. A recent independent study estimated Temple's contribution to the regional economy to be \$2.7 billion annually. This includes the university's operational spending, investment in construction, activity generated by students and visitors and the spending of more than 13,000 employees — the city's third largest work force.

“In so many ways, Temple is a university that makes a difference. That’s why I am proud that my support makes a difference to Temple.”

— LOIS BRODSKY, EDU '57, COLLEGE OF EDUCATION

Invest in Access to Excellence

Temple has written one of the most impressive success stories in American higher education, and it has done so with very limited discretionary resources. Now, as private support for the university increases, each new gift means new possibilities for Temple.

Gifts to the campaign will support increased scholarships for deserving students, more endowed professorships for outstanding faculty and construction of state-of-the-art facilities. Your donation will increase groundbreaking research and strengthen the university’s role in the community and across the region. No matter what size your gift, it is an investment in the Temple ideal that people of every background and means should have access to an extraordinary education.

Your support means that as we approach the university’s 125th anniversary, Temple is poised to make its greatest leap forward in teaching, research and community service. We look to alumni and friends to ensure that Temple and its students can continue to reach new levels of excellence every day.

To learn more or to make a contribution to Access to Excellence: The 125th Anniversary Campaign for Temple, visit www.temple.edu/accesstoexcellence or call 215-204-1001.

Access to Excellence Campaign Leadership



BOARD OF TRUSTEES CHAIR

Daniel H. Polett

A board member since 1992, Polett has been an active member of the board's executive, academic affairs and trustee affairs committees. Polett succeeded Howard Gittis as chairman of the board in September 2006. As a veteran board member at the university, the hospital and the health system, Polett brings a deep understanding of Temple's opportunities and challenges to the campaign.



CAMPAIGN CHAIR

Len Barrack SBM '65, LAW '68

A member of the Board of Trustees since 2001, Len Barrack is forever grateful for the education he received at Temple. After majoring in accounting and earning a bachelor's in business administration, Barrack studied at the Beasley School of Law. Today, he is the senior and founding partner of Barrack, Rodos & Bacine, a nationally recognized law firm.

CAMPAIGN COMMITTEE



Loretta Duckworth CLA '62, CLA '65, TYL '92 has been the Temple University Alumni Association's representative to the Board of Trustees since 2004. President of the Temple University Alumni Association, there are 30 years between her first Temple degree and her most recent degree, earned in 1992. Duckworth has been an educator, a businesswoman and a strong supporter of the arts in Philadelphia.



Judith Abramson Felgoise EDU '87 is a member of Temple's Board of Trustees. She is also a trustee and manager of the Abramson Family Foundation. A former elementary school teacher in the Abington (Pa.) School District, Felgoise also is a trustee of The Judith and Marc Felgoise Charitable Foundation in Fort Washington, Pa., an independent foundation she established with her husband.



Solomon Luo is a member of Temple's Board of Trustees. An ophthalmologist, Luo came to Temple 22 years ago as a resident at Temple University Hospital. After completing his residency, Luo founded the Eye Care Center. Now the Progressive Vision Institute, the practice has more than 50,000 patients. Luo maintains close ties with the School of Medicine as a clinical associate professor and a member of the Board of Visitors.



Patrick O'Connor became the youngest trustee in Temple's history in 1971, when the president pro tempore of the state senate appointed him. He served 13 years on the board until 1984 and was reappointed to the board in 2001. During his first term, he rose to leadership positions overseeing finance and investments. Currently, he is chairman of the student affairs committee.

BOARD OF TRUSTEES DEVELOPMENT COMMITTEE CHAIR



Richard J. Fox has served on Temple's Board of Trustees for 40 years, including 16 as its chairman. His service and philanthropy to Temple are reflected in the Fox School of Business, the Fox Center for Biomedical Physics and other areas throughout the university. Fox is chairman of the Fox Companies, one of the major building, development and real estate management companies in eastern Pennsylvania and southern New Jersey.

By the Numbers

The Million Dollar Club

We gratefully acknowledge the following contributors of \$1 million or more to the campaign.*

Joy Abbott, EDU '52
Leonard and Madlyn Abramson
Dennis, EDU '66, and Gisela Alter
American Cancer Society
American Heart Association
Anonymous
Joan H. Ballots, EDU '53
C. Hilyard Barr
Leonard, SBM '65, LAW '68, and Lynne, EDU '68, Barrack
Raza Bokhari, SBM '01
Cephalon, Inc.
Civic Ventures
Kenneth and Elsie Cundy
Johanna DeStefano
David R. Devereaux, SBM '86
J. Russell Fawley Trust
Richard J. Fox
Robert and Penny Fox
Howard H. Ginsburg, MED '71
Howard Gittis
Alvin T. Greenspan
Estate of Bettie Haas
Dorothy Jane Hicks, MED '44 Living Trust
Independence Blue Cross
Robert Wood Johnson Foundation
Kohn Foundation
Ray, DEN '53, and Dolores, PHR '51, Leidich
Solomon C. and Wendy Luo
John D. and Catherine T. MacArthur Foundation
Benjamin and Mary Siddons Measey Foundation
Martha Menei
Stanley, SBM '51, and Audrey Merves
Suzanne P. Murphy
Pennsylvania Interest on Lawyers Trust Account Board
Pepsi Cola Company
Pew Charitable Trusts
Philadelphia Shriners Hospital
PNC Foundation
Hime S. Poliner, CLA '34, MED '36
Ann McKernan, EDU '58, and Armand I. Robinson
Lindsay Allan Rosenwald, MED '83
Koji Shimada, EDU '75
Sharro Health Research Organization
Starr Foundation
Estate of Maurice J. Stone
Temple University Hospital Auxiliary
Marvin and Adeline Wachman
The William Penn Foundation
W.W. Smith Charitable Trust

*List complete as of September 1, 2007

TO DATE...

Temple has received nearly **320,000** gifts and pledges from more than **107,000** people and organizations. More than **110** new endowed scholarships have been established university-wide. President Hart committed **\$97** toward passport fees for each new student traveling abroad. Last year alone, Temple received **12,398** gifts from first-time donors. Students have contributed nearly **\$90,000** to the campaign.

TO COME...

Tyler will install two **520lb.** blowing furnaces and one **700lb.** casting furnace in the glass studios of the new building. The School of Medicine will see **11** stories of research and teaching space rise on Broad Street. **1,200** plush velvet seats will be installed in the auditorium of the renovated Baptist Temple. Temple will celebrate **125** years of access to excellence with historic fundraising success in **2009**. At least **\$350 million** will be raised for all Temple schools, colleges and programs.

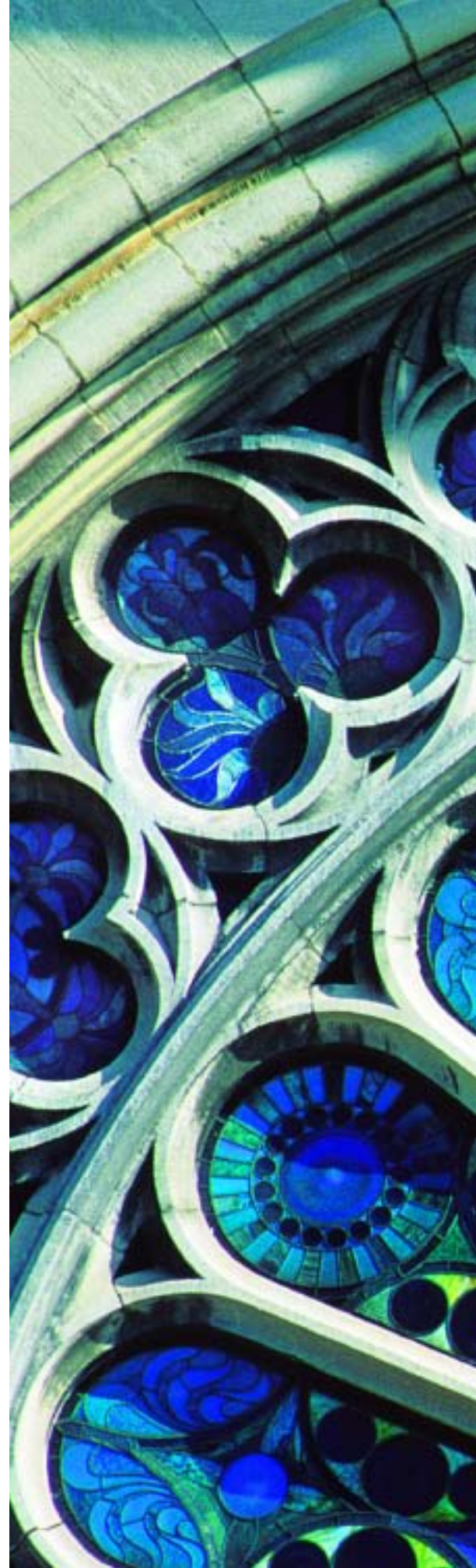
BAPTIST TEMPLE AN ICON REBORN

By Ray Betzner



When it opened on March 1, 1891, Baptist Temple was the mega-church of Victorian Philadelphia. With a seating capacity of nearly 4,600, it was the largest Protestant church in the United States.

It was built to house the dreams of Russell H. Conwell, a Massachusetts minister who had been called to Philadelphia just nine years earlier. Handsome and possessing a speaking style that made him one of the nation's most popular orators, Conwell turned "The Temple," as it was originally known, into a Philadelphia landmark and a community treasure.





NOW, MORE THAN 115 YEARS after its doors opened, plans are under way to bring back the Baptist Temple’s grandeur and to re-establish its role as a major North Philadelphia landmark. The more than \$29 million renovation is moving forward, the university has hired Hillier Architecture to oversee the work and there is a growing excitement about the possibilities.

“Temple University and Baptist Temple have a long, shared history,” President Ann Weaver Hart notes. “It is entirely appropriate for us to breathe new life into this vital building and create a monument to the growing vitality of this community.”

A PARALLEL HISTORY

Temple College was already three years old when the Baptist Temple opened its doors. Conwell’s original building was Grace Baptist Church at 12th and Berks streets. In short order, Conwell became a star of the public speaking circuit and his little church became a center of activity in North Philadelphia. Historian and former faculty member Joseph C. Carter, in his three-volume biography, notes that the dynamic preacher became a true Philadelphia star.

His fame snowballed partly because of his warmly appealing sermons — so much more practical, colorful, sincere and spiritually uplifting than the stern, gloomy and sleep-inducing theological orations he said he recalled hearing in the plain Methodist church of his boyhood in South Worthington.

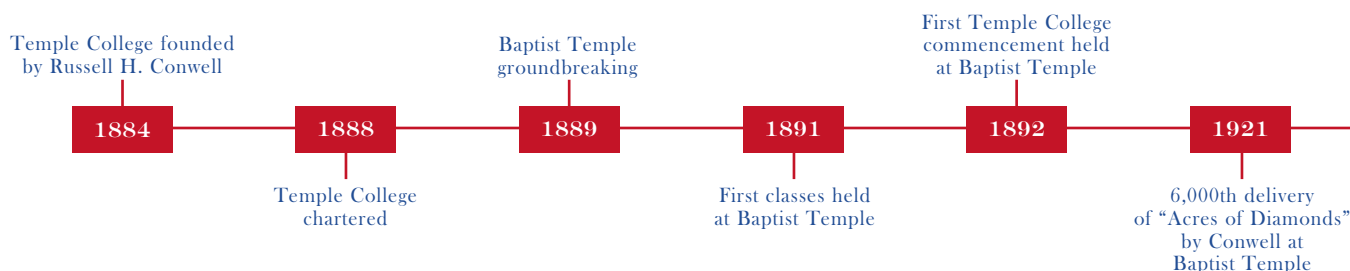
By the second year of his tenure in Philadelphia, tickets were issued to pew-holders to ensure admission to his services. Hundreds of waiting

visitors lined up like star-struck fans seeking last-minute access to the remaining seats.

Legend has it that he began teaching young men at night in portions of Grace Baptist Church, including an area known as the “temple” — a precursor to the Temple College and later Temple University.

Reports Carter: “One evening in 1884, at the Berks and Mervine streets church, a young man went to Conwell in his study and expressed a desire to prepare for the Christian ministry. Conwell offered to teach the youth one night a week, but on the agreed-upon evening seven earnest young men appeared... Thus was the school called ‘Temple’ founded. Conwell’s class grew in numbers, and within a short time the services of other teachers were enlisted and it was necessary to rent a room, then a building, then two. Within a few years, the studious group had grown from seven to several hundred students, and a charter for ‘Temple College’ was issued in 1888.”

Conwell served as both pastor of the church and president of the college, and he proved to be a master fundraiser for both institutions, as well as for the hospital he inspired. An example of his fundraising prowess is the story of little Hattie May Wiatt, one of a number of children Conwell saw who couldn’t get into the church’s Sunday school service because of overcrowding. Conwell told his parish that “I took her up in my arms, lifted her to my shoulder, and then as she held on to my head — an embrace I never can forget — I carried her through the crowd into the hall, into the Sunday school room.” Conwell talked with her the next day about the need for an additional building.





UNIVERSITY ARCHIVES



“When we get the money with which to erect a school building we are going to construct one large enough to get all the little children in,” he told her. Hattie May Wiatt died soon afterward, but she had gathered 57 cents that she left as her contribution to the new building.

Moved by her gesture, Conwell sold off each of her pennies to donors, raising \$250. It was that vigor and ingenuity that Conwell brought to fundraising for the new church a few years later. Fifty-four of Hattie’s pennies had been returned to Conwell, and he used them as the down payment for the new church property on Broad Street. Newspaper reports indicate Conwell even auctioned off the first spade of earth turned at the building’s groundbreaking, for the then-princely sum of \$50. Tiles and tablets lining the walls and floors of the church testify to Conwell’s ability to draw support from the poorest to the wealthiest in the greater Philadelphia region.

By the time the new Baptist Temple opened its doors in 1891, at Broad and Berks streets, Temple College was already outgrowing the church. Within 10 years, the college had 4,200 students and needed several local buildings for classes.

Both Temple College and its namesake church flourished as the decades rolled on, and Conwell’s Acres of Diamonds lecture was in high demand in the city and around the East Coast. For Conwell,

the Acres of Diamonds speech wasn’t mere sermonizing — his experience with the church and the college named Temple proved that he would not need to travel far to find those who needed his services, and those who would be willing to support his causes. “So important an enterprise, for the benefit of so large and noble a class of our people, will receive the cheerful gifts of the generous citizens of our city,” he wrote in the Temple College prospectus of 1888.

After Conwell’s death in 1925, Baptist Temple and Temple University moved apart, but maintained a strong link. By mid-century, Baptist Temple had become a stop for some of the country’s most important intellectual and political figures. Martin Luther King Jr. and President Franklin D. Roosevelt spoke there, as did anthropologist Margaret Mead. Anne Sullivan and her famed pupil, Helen Keller, spoke at the Temple as did General Dwight Eisenhower when he was president of Columbia University. Alistair Cooke and Edward R. Murrow also delivered commencement addresses within its walls. Moreover, Temple University events including freshman orientations were held in Baptist Temple’s massive interior, well into the 1960s.

By the early 1970s, Baptist Temple’s congregation was increasingly moving to the suburbs. In 1972, the church’s trustees purchased land in Montgomery

Baptist Temple (left) has hosted intellectual and political luminaries throughout its history, including President Harry S. Truman (center, at left) and Martin Luther King Jr. (right).

Chapel of Four Chaplains dedicated by President Harry S. Truman

1951

Church congregation sells Baptist Temple to Temple University

1974

Baptist Temple certified as a historic building by the Philadelphia Historical Commission

1984

American Institute of Architects designates Baptist Temple as a landmark building

2003

Structural repairs made to roof

2004

Baptist Temple renovation scheduled for completion

2009



PRELIMINARY ARTIST RENDERING — RIMJIM HILLER ARCHITECTURE

County and built a new church. Two years later, Temple University purchased the building.

Temple's plans for the old building have varied in the intervening years, with its destruction or renovation frequently discussed, but never put into motion — until now.

SURPRISES AND POTENTIAL

William Bergman has a personal history with Baptist Temple. While a City of Philadelphia police officer, he was inducted as an honorary member of the Chapel of the Four Chaplains, located in the church's lower level. The chapel, dedicated by President Harry S. Truman in 1951, honors the heroism of four World War II army chaplains — two Protestant, one Jewish and one Catholic — who gave up their life preservers to save GIs when the USAT Dorchester was sunk by Germans in the North Atlantic.

As vice president for facilities at Temple, Bergman has walked through the Baptist Temple on many occasions. Each time, he comes away amazed. "It's an incredible building," Bergman says.

"We're still finding surprises in there, things people have not seen in years."

Take the main set of front doors of the building that open out onto Broad Street. When the university purchased the building, a set of storm doors kept the rain and snow out. One day, while repairing damage from a storm, workmen discovered a set of "pocket doors" in the church's walls. The doors, with their stained glass, had been hidden for more than 30 years.

"That's the kind of thing that happens in Baptist Temple," says Bergman. "This is a very, very exciting project."

Jim Garrison agrees. An architect with Hillier Architecture, he's accustomed to creating new uses for historic structures. In Philadelphia, Garrison oversaw the adaptive reuse of the old Girard Bank building in Center City into the new Ritz-Carlton Hotel.

Walking around the Baptist Temple leaves Garrison in awe. "You don't expect to see the single big volume of space. You think of it as a conventional church, and when you get inside, it's surprising to see that it's really a theatrical space," he says.

Even today, with the seats removed and so many

“You don’t expect to see the single big volume of space ... You think of it as a conventional church, and when you get inside, it’s surprising to see that it’s really a theatrical space.”

of its original features fading or in disrepair, the majesty and power of its earlier life is evident. “You can only imagine what it was like in its heyday,” Garrison says. At the same time, the huge space presents some challenges as plans move forward to adapt it as a multi-purpose hall that could accommodate concerts, lectures or convocations.

“Without compromising the impact of the volume, we need to deal with the space,” says Garrison. “The building has no lobby; there’s no transition from Broad Street into the structure.”

Although he’s in the early stages of assessment and planning, Garrison wants to make sure the final product reflects the creativity of the original architect, Thomas P. Lonsdale, a Norristown native whose designs can be found in some of Philadelphia’s trademark structures.

“We want to draw out the Lonsdale work where we can,” Garrison says. “There are decorative features in the woodwork, for example, that we would like to retain in the new venue.”

A BRIGHT FUTURE

When work is finished, Baptist Temple will serve as the premier gathering place on North Broad Street,

hosting lectures, symposia, commencement ceremonies and prominent public speakers, and serving as the new home of the Temple orchestra and choirs, theater performances, operatic productions, jazz concerts and ballet recitals. The renovated facility will include an expanded lobby and reception areas for pre- and post-event gatherings of all kinds.

Returning this historic facility to its roots as a venue for entertainment and inspiration will not only serve the evolving needs of Temple’s Main Campus, it will also help to anchor the university as the northernmost point of Philadelphia’s Avenue of the Arts.

The university and architect are also committed to honoring the building’s past. Tablets and tiles that commemorate the many donors who helped build and maintain the church have been retained and, where possible, will be used in the renovation. And old features will be given new life. The impressive stained glass half-rose window at the front of the church is a distinctive element that sends colored light softly into the church.

When the building is ready for occupancy, now tentatively scheduled for the end of 2009, it will also shine out on Broad Street, announcing a new era for a Philadelphia landmark.◆

PARTICIPATE IN THE BAPTIST TEMPLE’S HISTORIC REBIRTH

As part of the Access to Excellence Campaign, the university is extending naming opportunities at all levels of giving in support of the Baptist Temple renovation. Whether you choose to name a seat in the auditorium, sponsor a lecture or event space in the building’s stunning interior, or simply add your name to the Baptist Temple’s honor roll of donors, you can make your mark on Temple history by making a gift today.

To find out more, contact the Office of Institutional Advancement at 215-204-1001 or visit www.temple.edu/baptisttemple.

Leon and Sharon Moulder: Helping Tomorrow's Healers

LONNIE MOULDER knows the advantages that come with a college degree.

He knows because he watched his parents, who did not go to college, struggle to raise four children. His father worked in manufacturing plants, eventually becoming a foreman, yet he frequently held second jobs to support the family. His mother also held a full-time job while he was growing up.

Even then, Moulder, *PHR '80*, dreamed of attending college, studying pharmacy and helping others by creating new medicines. Now the president and CEO of MGI Pharma, a leading biopharmaceutical firm, he recently decided to thank the university that helped turn his dream into reality.

A \$500,000 gift from Moulder and his wife, Sharon, *PHR '80*, will ensure that tools and training are available for those who also dream of developing advanced medicine. Their generosity will support drug discovery in the School of Pharmacy, providing for research, equipment and other costs associated with a program in drug design, medicinal chemistry and structure activity analysis.

"I'm thrilled to have the opportunity to impact the educational experience for students," Lonnie Moulder says.

The future CEO began his working life by delivering newspapers in grade school. In high school, he washed dishes in a hospital kitchen. Because Moulder could not immediately enter a four-year university, he earned an associate's degree in biology while working full time at a steel mill.

That's why Moulder's Temple degree means more than an entry into the world of pharmacy, which he made as a clinical pharmacist at Temple University Hospital. It stands for something other than his readiness to pursue graduate study, which he did in the University of Chicago's MBA program. Most meaningfully, his college education represents the start of an intellectual life that would see him rise to the top of his industry.

Moulder spent 16 years in a range of commercial roles for Hoechst Marion Roussel and was on the founding management team of Boston-based biomedical startup Eligix. He joined MGI Pharma in



1999 as executive vice president and became president in 2002. Always interested in developing young people, he coached youth soccer for 12 years and has led seminars at a local high school. In March, the School of Pharmacy presented him with the Certificate of Honor, its highest alumni distinction.

"The pharmacy education I received and the people I met at Temple made a real difference in my life," Moulder says of his university days.

Sharon was one of those Temple people who made such a difference. Like her husband, she has a wide professional background. She worked as an assistant director in the hospital environment and supervised a managed-care clinical pharmacy. She was involved in diabetes education and is now a consultant to the pharmaceutical industry.

Both Sharon and Lonnie agreed that the time was right to give back to their alma mater. Thanks to their support, which adds to the value of today's Temple experience, students and researchers will get a head start on developing the next drug that helps millions of people.

— JOSEPH McLAUGHLIN

Where Goalkeepers Meet Don Giovanni: One Gift Transforms Two Worlds

AS A TEMPLE STUDENT, Ann McKernan Robinson, *EDU '58*, exemplified the term “well-rounded.” In fact, the 1958 *Templar* reveals that she juggled both an active social and scholastic life.

Her years as left halfback on the field hockey team, her role in the Women’s Athletic Association and her leadership as co-captain of women’s basketball classify her as a jock. At the same time, her membership in the Magnet Honor Society illustrates her aptitude as a brain. As president of Alpha Sigma Alpha social sorority, she was truly a student who — had the category existed — would have been crowned “most likely to succeed.”

Today, Ann shows the same fervent interest in two very divergent spheres — sports and the arts. Recently, she and her husband, Armand, decided to support both of these passions with a \$2 million gift made through a charitable remainder trust. \$1.1 million of the gift established the Ann McKernan Robinson Field Hockey Endowment Fund, the largest single gift to athletics at Temple, and \$900,000 supported graduate scholarships in the Boyer College’s opera program, also the biggest gift to opera.

Although Ann has no experience singing professionally, her interest in music springs from another source. “I grew up listening to opera on Saturday afternoons with my mother. Most of the operas we listened to were in Italian, and though I didn’t understand the language, the emotions were always crystal clear. To this day, Armand and I still listen to the Met broadcasts on Saturdays.”

These acts of philanthropy are not the Robinsons’ first. After she learned that additional funds were needed to support an endowment

begun by her former varsity field hockey coach, Anne Volp, Robinson immediately contacted her fellow field hockey alumnae. She urged them to join her in giving to the Anne M. Volp Endowment Fund.

In her career, Ann demonstrated the same commitment to excellence she had maintained in her academics and athletics. After graduating with a bachelor’s degree in physical education, Ann taught at Chestnut Hill College and the University of Pennsylvania. Over the years, she held prestigious positions within the U.S. Postal Service, including general manager, executive assistant to the postmaster general, vice president and consumer advocate.

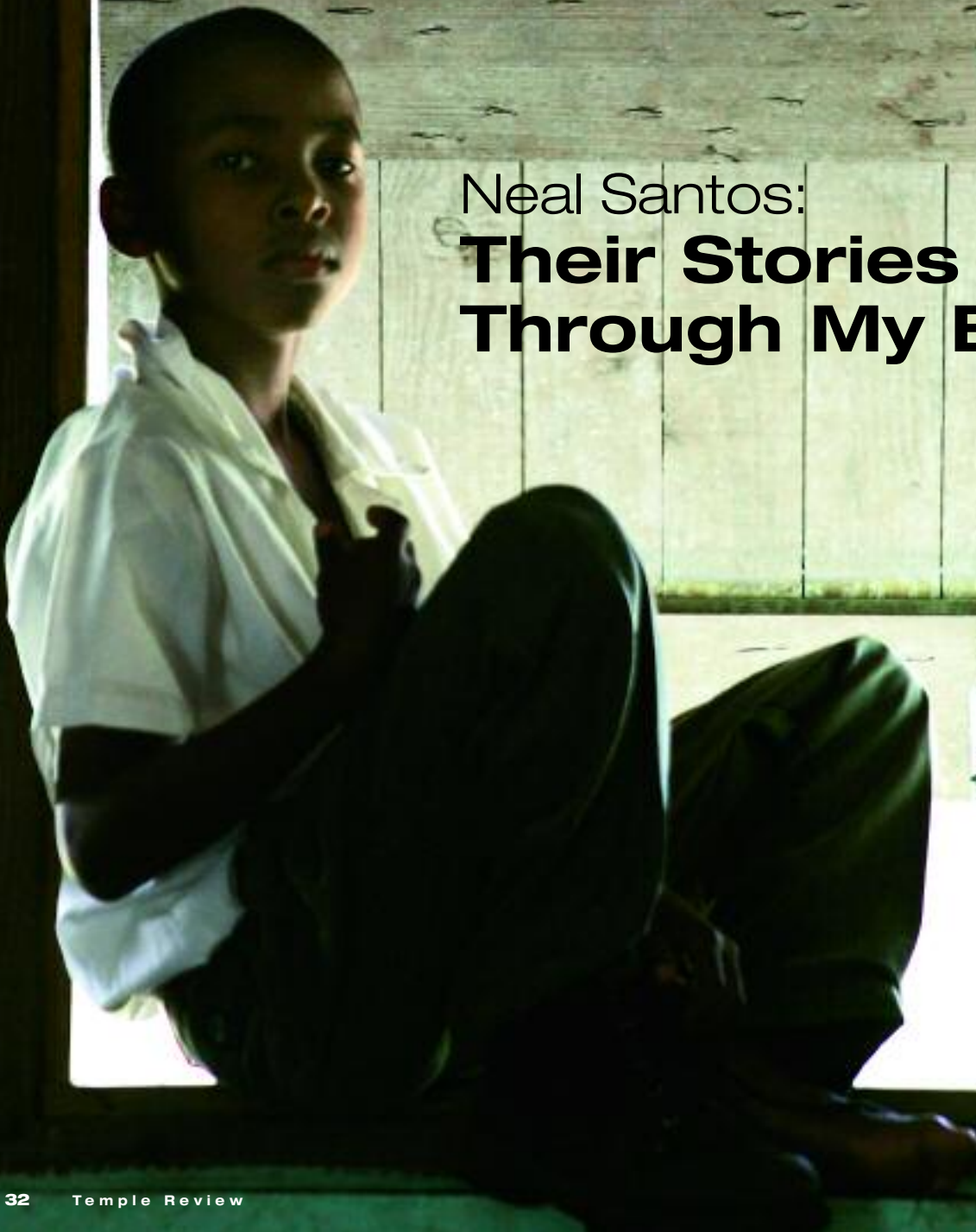
For Ann, the road to success began on campus. “When I was a student, the fifth floor of Conwell Hall and Alpha Sig were my whole life. My years as an athlete at Temple were very instrumental in my maturity. I had a wonderful experience here.”

When asked why she chose Temple for her philanthropy, she responds with surprise. “Why Temple? Because I’m an Owl, that’s why!” A smile lights up her face and, for a moment, you can see the same enthusiastic girl whose picture appears so often in the yearbook. “It just amazes me that we were able to do it.”

— AIMEE LABRIE



Neal Santos:
**Their Stories
Through My Eyes**





I'VE STRUGGLED TO UNDERSTAND THE WORD "PASSION" as it pertains to careers. As a Temple photojournalism student, I have heard colleagues say, "Photography is my passion." Some realized their passion in a blinding flash of inspiration. Others knew from an early age that photography is what they wanted to do for the rest of their lives.

In three years at Temple, I studied photography and how it is used to communicate. I studied the rules and ethics of journalism and its current ambiguity as a profession. Through publications and projects, I honed my skills and coalesced all that I learned. Despite this, I still felt unfulfilled. My knowledge to that point felt square and programmed.

Last spring, I signed up for an alternative spring break trip to Belize with a service program called Temple Volunteers. In addition to giving my time and effort, I wanted to strengthen my identity as a photographer, better understand how to build rapport with subjects and make real all that I learned in the classroom.

Our mission was to help build an after-school program in La Democracia, Belize. During our time there, we came to know the strong leaders of La Democracia, Aretha and Irma. These women made it possible for us to give the local children a safe haven and to pave the way to a bright future.

Despite our efforts, the children of La Democracia are not guaranteed a promising tomorrow. They face poverty and a life of crime; some may not have the chance to eat on a daily basis. But when I spent time with these bright children, when they climbed on my back for a "plane ride" or asked me to buy them an "Ideal Icicle," I realized how important it is to show the positive side of their lives and to give balance to the truth.

I genuinely want to help people through photography, and being able to combine my craft with volunteerism is a gift beyond measure. As a photographer, I've helped people share their stories when they would otherwise not have had a voice. Through my travels and studies, I understand the power that comes with what I do, the beauty in truth and the importance of maintaining trust. The more time I invest in the relationships with my subjects, the more they trust me and get to know me beyond the camera.

I have caught myself saying, "Photography is my passion," but this is not true. I am dedicated to photography, but it's not what motivates me. Helping others, getting to know the world and sharing stories — this is my calling. My identity as a photographer only goes so far. My identity as a human being is the most basic and beautiful thing that I can give; and therein lies my passion.

Neal Santos is a photojournalism student from Jersey City, N.J. He shot these images during his service trip to La Democracia, Belize with Temple Volunteers.

FROM THE TUAA PRESIDENT



JOSEPH V. LABOLITO

Last summer sizzled for Temple alumni with all kinds of exciting events!

“Temple Down the Shore,” an outing staged July 13-15 by the Temple University Alumni Association and the Owl Club, was

a treat for several hundred alumni and friends. We enjoyed a Young Alumni-sponsored happy hour in Avalon on Friday, a golf tournament and barbecue in Somers Point on Saturday and a Boardwalk Football Fan Fest in Ocean City on Sunday. It was a great opportunity to get together with head football coach Al Golden and to celebrate our alma mater.

And that’s not all. Regional alumni clubs in Boston and Los Angeles gathered for Phillies games and soccer matches. Clubs in metropolitan New York, Washington, D.C., and Atlanta “sent off” newly admitted students with Taste of Philadelphia parties and other events. The San Francisco club invited students for career discussions and mentoring — something all alumni are qualified to do. Our new Temple University Black Alumni Alliance held a family event at Six Flags for 150 guests.

By now you may have checked out myowlspace.com. Wow! This new online community is provided by the TUAA and Institutional Advancement to provide alumni with career and social opportunities, job postings, class notes, event information, online giving and more.

Not only are Temple Owls everywhere, but they’re busy contributing, having fun and giving back.

My best,

Loretta Duckworth
CLA '62, CLA '65, TYL '92
TUAA President

SUMMER EVENTS: HE



PHOTOS THIS PAGE: KELLY AND MASSA



The Temple University Black Alumni Alliance (TUBAA) held its kick-off event on June 2 at the African American Museum in Philadelphia for more than 300 guests. They heard from TUBAA President Tim Reese, ENG '94, while enjoying a reception and the museum exhibits. The TUBAA also held a family day for 150 people on July 21 at Six Flags. For more information, call 215-204-7521.

HERE, THERE AND EVERYWHERE



More than 120 alumni and friends attended "Temple Down the Shore" from July 13-15. Friday's happy hour at the Windrift Resort in Avalon was sponsored by the Temple University Young Alumni. On Saturday, alumni, family, coaches and friends enjoyed the Shore Tour Golf Tournament followed by a cocktail hour and barbecue at the Greate Bay Country Club. The Football Fan Fest on Sunday entertained the crowd at the Ocean City Music Pier with autographs, pictures, giveaways and prizes.

PHOTOS THIS PAGE: JOSEPH V. LABOLITO

Do . . .

continue to send your news for Alma Matters to the Editor at: Temple Review
Temple University, 601 USB
Philadelphia, PA 19122

Don't . . .

despair if your submission does not appear in the very next issue. Watch for publication in a future edition.

The 1940s

SIDNEY J. GOLD, SBM '40, is a retired certified public accountant and former managing partner of Gold & Company. He now lives in Boynton Beach, Fla., and would like to contact members of the class of 1940. A World War II veteran, he was administration officer of the QM base depot during the war.

The 1950s

HASKELL "HAK" KAUFFMAN, SBM '50, has published www.haksphotos.com, a coffee table book of thirty black and white photographs. It is a family friendly hard cover book with universal appeal. The book is being very well received and is available at www.amazon.com.

RON VELLNER, EDU '52, EDU '60, a retired teacher living in Chalfont, Pa., was inducted into the National Purple Heart Hall of Honor, which pays tribute to combat-wounded veterans of all wars. The museum is located on the New Windsor Cantonment State Historic Site in Vails Gate, N.Y.

DAVID M. DEWOLF, PHR '55, a retired pharmacist and sky diver living in Elizabethtown, Pa., made his 12,000th jump last October. He was the 34th person in the United States to reach this milestone.

GERSON SERODY, PHR '57, retired as CEO and Chairman of the Board of CARE Pharmacies, a 60-store pharmacy franchise system operating primarily in Maryland, Virginia, and Washington, D.C., in June.

Previously the owner/operator of Landmark Professional Pharmacy in Alexandria, Va., he and his wife retired to Chapel Hill, N.C.

The 1960s

NANCY F. FIORA, CLA '64, retired after serving 20 years as a federal magistrate judge, U.S. District Court, District of Arizona. During her tenure she chaired the executive board of the 9th circuit magistrate judges and established a mentor program for new magistrate judges throughout the 9th circuit.

RONNIE FISHER WOLF, EDU '65, EDU '67, retired from her career as a school teacher and department head at Philadelphia's Mastbaum High School in 1996 to pursue her passion for photography. She won numerous awards and had 40 photographs on display last year at the new public library in Cherry Hill, N.J. Wolf and her husband started BRW Enterprises as independent distributors for EcoQuest International, a manufacturer of high-quality air and water purification products.

THOMAS FOGLIA, EDU '68, a scientist at the Agricultural Research Service working in the fats, oils and animal co-products research unit in Wyndmoor, Pa., was named Distinguished Senior Research Scientist of 2006 by the service. He developed, along with his fellow researchers, alternative methods for making biodiesel fuel from agricultural feedstock such as animal fats and recycled greases.

LYNN S. MATSUOKA, TYL '68, an artist living in Honolulu, had her paintings, *Tattoos of Devotion*, exhibited in February at Romany Kramoris Gallery in Sag Harbor, N.Y. Her work also appeared at The Morikami Museum of Art in Florida and Sen Restaurant in Sag Harbor.

The 1970s

GRACE FIELDER, AMB '70, was featured in the July 4 broadcast of *NBC Nightly News*. Fielder, a landscape architect, was interviewed by NBC's Anne Thompson as part of a story about Clemjontri Park, a playground in McLean, Va. that Fielder designed for children with physical and mental disabilities.

MARK FRIDKIN, CLA '70, joined Schmidt, Kirifides, Pearson & Koutcher as a partner in the firm's Media, Pa. office. He was previously a partner with Marks, Feiner & Fridkin of Philadelphia.

MARCIA GOBY COHEN, PHR '71, principal of Marcia Cohen & Associates in Orange, Conn., received a doctoral degree in pharmacy from Mass. College of Pharmacy.

GLORIA RUBIN, EDU '72, a counselor in the school district of Fairfax County, Va., took a leave of absence and is working as a labor relations representative for the Fairfax County Federation of Teachers.

CHARLES FALGIE, SCT '73, was promoted to senior attorney with the enforcement department of the NASD/American Stock Exchange Regulation Division in New York City.

EDITH HIRSHTAL, MUS '73, MUS '76, made a film about a community of Holocaust survivors and their children and grandchildren, which is part of the Steven Spielberg Jewish Film Archive at the Hebrew University in Jerusalem.

You may also post your class notes on the online alumni community at

myowlspace.com
Temple University Alumni & Friends

SYDNEY ANN BECKETT *an eye for quality*

Sydney Ann Beckett, *CLA '65, EDU '67, EDU '93*, is the epitome of quality. As president and co-founder of Elite Sportswear Products and president of the Union Church Non-Profit Housing & Development Corporation, she insists on the highest quality in the products she produces, the friendships she develops and the community where she lives.

The reason behind her focus on quality? The inspiration of her distinguished parents. Her father, Charles Campbell Beckett, was a prominent community figure as a minister and fair housing activist. Her mother, Ruby Rush Beckett, held a doctorate in mathematics and served as an example of a strong, determined woman. As she makes decisions today, Sydney recalls her parents' most valuable advice: "Remember — you're a Beckett, and you're a lady."

While an undergraduate in the 1960s, Beckett dedicated herself to student activities. This meant celebrating the diverse experiences and backgrounds of Temple students. She explains, "What I like about Temple is that people can tell their stories without being embarrassed. People at Temple have in their hearts and in their characters the quality of prestige." When unanimously elected president of the pan-hellenic council, she insisted that sororities be open to diversity in membership by accepting students of all backgrounds.

Shortly after graduation, Beckett served as a trustee at Temple where, despite her youth, she says, "I learned to make connections with other members, work behind the scenes and let my ideas be known." Learning from this experience, Beckett used her connections to improve North Philadelphia.

She became a board member of the non-profit housing corporation that her father founded in the North Philadelphia Empowerment Zone. Now chair of the corporation, which oversees a 132-apartment complex, her mission, she says, "is to provide safe, decent, sanitary housing where residents are taught skills in community development and maintaining their neighborhood." She is proud of creating a worthwhile environment for her community, which repeatedly earns an "A" rating from the Department of Housing and Urban Development. Likewise, she established the W.C. Beckett Computer Center at AME Union Church where seniors and teenagers can work together.

It is with her dedication to excellence that Beckett approaches her professional life at Elite Sportswear Products. With her staff of a dozen artists, salespeople and production techs, she has acquired state-of-the-art



JOSEPH V. LABOLITO

equipment to produce professional logo and sportswear products. She has gained recognition from major sports teams, holding contracts with the Philadelphia Eagles to print championship apparel, and built international connections. Beckett glows when describing the growth of her company. "The quality of what comes out of here makes it very professional."

Beckett considers her work with Union Church Housing and the North Philadelphia community to be a tribute to her parents' legacy. With friends all over the country, community development projects throughout Philadelphia and business partners all over the world, Beckett asserts, "I don't feel alone. I feel very connected." Her ability to make these connections she attributes partly to her Temple roots. She says, "Temple has such a presence. I'm very, very proud of it." — *STEPHANIE KOLLM*

JUDY SHOPP, CLA '73, was appointed chief counsel to the Pennsylvania Department of Education by Governor Rendell in February.

DENNIS JOHN CAHILL, SCT '74, was promoted to signature promotional voice at the Mountain West Sports Network in Colorado. He is also the signature promotional voice of Comcast SportsNet in Philadelphia, Chicago, Baltimore and Sacramento, Calif., and Comcast Sports Southeast, as well as

one of the promotional voices at WGAL TV 8 in Lancaster, Pa.

GEORGE CAVALLO, ENG '74, was named executive vice president of Gilbane Building Company in Lawrenceville, N.J. He is a member of Gilbane's Office of the Chairman and is the first non-family member to serve in this position. He will provide operational and strategic direction to the firm's regional office teams. Cavallo served as an adjunct professor at Temple and Drexel

universities and is a member of the Industrial Advisory Committee for Temple's School of Engineering, evaluating the civil engineering school programs on the bachelor's and master's levels.

MARK MOORSTEIN, LAW '74, an attorney in private practice in Manassas, Va., published a new book, *The Perfect President*.

ALBAN SALAMAN, LAW '74, was chosen as one of the top 100 trust

PHILLIP C. RICHARDS *growing people*

For Phillip C. Richards, 1962 was an unforgettable year at Temple. He shook Martin Luther King Jr.'s hand on stage at Geasey Field, introduced Eleanor Roosevelt to the Temple community and led the Owls as team wrestling captain. In that same year, he became senior class president and received Temple's Sword Award as the outstanding senior.



Today, Richards is the chairman and CEO of North Star Resource Group, a comprehensive financial services firm. What drives a vibrant student leader, a man respected by his peers and teachers, into the complicated and sometimes mundane world of insurance? For Richards, *SBM '62*, it was a desire for innovation and a goal to help people prepare for the future. Since few of his classmates were interested in insurance, preferring medicine, law or brokerage, he decided to carve his path in an industry where few were willing to make waves.

He claims, "I looked for the best opportunity where I would have a competitive advantage. I

wanted to hit the ball where there were no fielders." At a time when few investors were willing to take risks, he leapt into the then-unstable market of mutual funds. When the typical insurance salesman offered just a few products, Richards broke new ground by pioneering the "financial supermarket," offering insurance, securities, investments, real estate, mutual funds and stocks all in one place.

As a result, he has become a recognized leader in the industry, accruing awards and speaking at conferences all over the world. GAMA International, a volunteer organization dedicated to ethics, leadership and professional development, inducted him into its hall of fame in 2005. He received the 66th Annual John Newton Russell Memorial Award, the industry's highest honor.

But for Richards, the insurance industry is more than making profits and earning applause through asset management. "Do we make money? Yes," he says, "Is that why we do it? No. We want to help people." According to Richards, his profession is not about crunching numbers, factoring risks or selling policies. He says, "I'm not a financial planner; I'm a teacher. I wasn't that great at sales, but I love growing people." His goal, then, is to help people

grow toward their future by focusing their financial energies. Through his professional services, he hopes clients and will become better people and investors.

Always seeking to mentor others, Richards is an adjunct professor emeritus at the University of Minnesota, where he teaches insurance. Combining his love for teaching with his desire to innovate, he hopes to add to his students' university experiences while keeping a pulse on the developments in his industry. He jokes, "If I can stay current with 18-20 year olds, then I'm never out of style." To further share his knowledge, Richards recently published *25 Secrets to Sustainable Success*. This book, the proceeds of which help further the efforts of GAMA International, contains "morsels of wisdom" from his own mentors.

More than 40 years later, Richards hasn't forgotten his Temple roots. He recognizes, "I was blessed to find a university that offers life-changing experiences." And Richards is far from calling it quits. "They'll have to carry me out of here feet first with a smile on my face. If you love doing what you're doing, there's no such thing as retirement."

— STEPHANIE KOLLM

and estates lawyers in the nation by *Worth* magazine. He is a partner in the law firm of Holland & Knight in Washington, D.C.

GEORGE TOMEZSKO, CLA '74, a writer living in Philadelphia, published his fourth book, *An Afternoon in May*, a true story that focuses on the role of the Corps of Cadets at the Battle of New Market during the War Between the States.

EVE KUHR HERSOV, AMB '75, THM '78, THM '82, an independent consultant who focuses on quality of life issues for people with complex needs, had her research "What Does Being Jewish Mean to You? The Spiritual Needs of People with Learning Disabilities and Their Families," published in the *Journal of*

Religion, Disability and Health in 2006 and in *Jewish Perspectives on Theology and the Human Experience of Disability*.

BRUCE J. WISOTSKY, CLA '75, CLA '78, joined the law firm of Norris, McLaughlin & Marcus in Bridgewater, N.J. as a member of its bankruptcy and creditor's rights group. He is a former Ravin Greenberg partner.

MARIANNE GIDEON, EDU '76, CHP '79, an educator and site visitor, retired from Accreditation Council for Graduate Medical Education after 27 years and 3,500 site visits in virtually all specialties and subspecialties. Following retirement, she joined Partners in Medical Education, Inc., a consulting firm in Irwin, Pa., that provides hands-on advice and educa-

tion to graduate medical education professionals in the areas of ACGME accreditation, GME operation and management, and professional development.

ROSITA M. BRENNAN, EDU '77, EDU '96, of Life Saver Productions in Abington, Pa., who does videos with her former professor, presented a workshop at the 16th-Annual Family Reunion Conference in March. The workshop titled "Saving Stories: How to Make Your Family Reunion Last a Lifetime" demonstrated the use of three different media — books, posters and video — to record memories.

JULES MERMELSTEIN, CLA '77, a social studies teacher at Germantown High School in

Philadelphia is seeking his fifth term as township commissioner in Upper Dublin Township. He also serves as board vice president.

BARBARA T. O'TOOLE, SCT '77, a psychotherapist working with NHS of Philadelphia, received her doctor of clinical psychology degree last June.

ROBIN HORNSTEIN, EDU '78, EDU '83, EDU '96, is the executive director of the Interim House program at Hornstein, Platt & Associates, an

all-woman psychotherapy practice in Center City Philadelphia. She specializes in eating disorders.

ALLAN J. KIMMEL, CLA '78, CLA '83, a professor at the ESCP-EAP European School of Management in Paris, has a new book titled *Ethical Issues in Behavioral Research: Basic and Applied Perspectives*. He also wrote *Rumors and Rumor Control: A Manager's Guide to Understanding and Combating Rumors*.

KIRK MUSPRATT, MUS '78, an internationally known conductor and artist, received the Chicagoan of the Year award from classical music critic John von Rhein of the *Chicago Tribune*. In addition to the quality of his work, Muspratt also was recognized for his efforts to make classical music accessible to people from all walks of life.

EDWIN HART III, CST '79, POD '83, was sworn in as president of the Pennsylvania Podiatric

ALAN KOSHER coming soon to a city near you

In Disney's 1994 animated feature, *The Lion King*, Pumbaa the warthog and Timon the meerkat are guided by a "no worries" philosophy they call Hakuna Matata. It's a phrase that also fits Alan Kosher, who says you can't hold a job like his without the ability to "go with the flow." For the past five years, Kosher, *SCT '69*, has been the company manager for a traveling musical adaptation of *The Lion King*. It's the latest theatrical tour in a career that spans 27 years on the road, more than 25 productions and over a million miles.

Asked about his typical day, Kosher replies with a laugh, "There's no such thing as 'typical' in this business." As manager, he handles all the finances and logistics of the touring company, including its 109 cast and crew members. That means making everyone feel comfortable in new homes and offices when the musical moves to a different city. It also means adapting to an ever-changing road schedule. While traveling productions typically stay in a city for several weeks, the massive success of *The Lion King* means that its schedule is quite varied; the production set up shop in Philadelphia for 14 weeks and camped in Boston for an amazing eight months.

Kosher, who lives in Philadelphia between tours, says he knew he wanted a career in theater before he enrolled at Temple. While other students focused on acting or directing, Kosher's interest was management. "I knew I was very skilled at organizing, budgeting and spending other people's money," he says with a chuckle. He credits Professor David Hale with "not only guiding my academic path, but allowing me to explore various aspects of management."

After graduation, Kosher began working in the box office of Philadelphia's Forrest Theatre. He rose through the theatrical ranks over the next decade and began life as a company manager on Christmas Eve in 1980 — more proof that flexibility is integral to success in theater management. "This job isn't for everybody," he says. "There has to be a combination of the right

personality with the right lifestyle. Whenever I lecture students, I tell them it's no sin not to be cut out for the road."

Kosher's desire to teach students about touring theater inspired him to create the Alan Kosher Fund in the School of Communications and Theater. The fund enables select students to experience a one-week internship with a first-class theatrical touring company. "I thought it would be interesting for students to observe the practical side of the business," he says. "I'm so fortunate that I have been given a role in educating Temple students about this."

Though life on the road is frenetic, Kosher daily enjoys the excitement of live theater and the chance to work with nationally recognized talents. His run with *The Lion King* has been the longest of his career and shows no signs of letting up. "This production still has a lot of life in it," Kosher says, "and for the foreseeable future, *The Lion King* will be a major part of my life."

— ALIX GERZ



COLIN LENTON

CAROL ANN KELL *adventures in media*

Carol Ann Kell spent only 18 months at Temple, but her whirlwind journey through its journalism program launched a meandering career full of fun, firsts and adventure. “Without Temple’s can-do, get-yourself-out-in-the-workplace spirit, I wouldn’t be doing what I’m doing today,” she says.



Kell, *SCT '76*, entered Temple as a young, divorced mother with a part-time job and an associate’s degree. She left with solid writing skills, cum laude distinction and a job as a reporter at a big-time news radio station.

She sped through her coursework because she needed to get back to work to support her young son. During one semester, she took a staggering 26 credits. “I don’t know how I did it!” she says now.

Broadcast legend and longtime Temple adjunct professor Lew Klein helped Kell land an internship at WIP Radio, which was a major news source in Philadelphia. When her internship ended, the sta-

tion hired Kell as a reporter. Within a few months, she became the first female anchor at WIP. She read the news while fellow Temple grad Merrill Reese, *SCT '64*, reported sports.

After eight years at WIP, Kell took a position with ABC Radio in New York, where she covered hard news and consumer affairs stories. She commuted from Philadelphia to Manhattan, and freelanced for a fledgling, 24-hour news operation called CNN.

“Around the clock cable news was a new idea,” Kell states. “It changed the face of newsgathering.”

Kell’s assignment at the network was to cover happy, upbeat news for a 30-minute, positive news program. “It was Ted Turner’s idea that everybody wanted to hear good news,” Kell recalls. “It didn’t last very long.” After covering soft-news stories for four months, the show was canceled.

In 1985, Kell left journalism to teach people how to deal with the media. She started her own “effective communications” consulting company in Philadelphia, Kell & Associates. “I went to people I used to skewer and said, ‘I’m here to help.’”

She now specializes in coaching corporate executives, politicians, professionals and non-profit directors on how best to portray their organizations

in a broadcast climate that is steadily becoming more and more confrontational. “What I do is even the playing field,” she says.

She runs her clients through simulated interviews that are videotaped, and then analyzes the tapes for their performances. Whether they are preparing to speak before Congress or to their stockholders, the media or an individual investor, Kell instructs her clients on how to avoid stumbling over their words and how to hold their ground during interviews. She helps select wardrobes and teaches people how to harness nervous energy.

Between client meetings, Kell attends Owls basketball games and alumni functions, and has been in touch with friends from the university. She ran into Brenda Jorett, *SCT '80*, who interned at WIP under Kell and now anchors for WHYY, while at the shore. She sees Reese, now the “Voice of the Philadelphia Eagles,” around the city.

While the consulting business continues to be good, Kell is considering enrolling in creative writing classes at Temple. “I’ve always written as a journalist,” she says. “I think I have a few short stories in me.”

— G.W. MILLER III

Medical Association last November during the Goldfarb Foundation’s Annual Clinical Conference. His office is in Bethlehem, Pa.

The 1980s

KEVIN P. McCANN, *LAW '80*, co-founder of Chance & McCann in Bridgeton, N.J., was named secretary of the New Jersey State Bar Association. He also will serve as trustee for the NJSBA’s philanthropic arm. He will be on track to assume the NJSBA presidency in 2012.

LESLIE BETH BASKIN, *LAW '81*, was named vice chairman of the Eastern District of Pennsylvania Bankruptcy Conference for 2007. EDPA is an association of lawyers, professionals and paraprofessionals who specialize in the practice of bankruptcy and creditors’ rights law in the Eastern

District of Pennsylvania. Baskin is chair of the bankruptcy and creditors’ rights group of the Philadelphia law firm Spector Gadon & Rosen.

ROBERT “TERRY” BRUNT, *SBM '81*, joined the business consultants and accounts team of Solomon-EdwardsGroup as IT audit manager in its Philadelphia office.

JOSEPH L. FAZIO, *SBM '81*, joined Mommy’s Light Lives On Fund as chief operating officer. Mommy’s Light, headquartered in Exton, Pa., provides free resources to children and teens between the ages of 3 and 18 throughout the greater Philadelphia area whose mothers have died or are terminally ill.

MICHAEL GAUGHAN, *SCT '81*, owner of MPG Productions in Brooklyn, N.Y., is a producer, director

and filmmaker. His short film *The World of Work Bikes*, screened last March in the Celluloid Cycles Film Festival in Melbourne, Australia.

EDWARD BISHOP, *SCT '83*, a freelance writer and video editor living in Los Angeles, co-produced and edited *Fighter*, a documentary film that follows the rise of Ultimate Fighting Champion and Hall of Famer Randy Couture. It was named best documentary at the FAIF International Film Festival. He is currently editing *Starz Hollywood Reporter*, a weekly entertainment newsmagazine show on Starz.

GINNY COYLE, *SBM '83*, formed Ginny Coyle & Associates, a personal financial advisory firm in Philadelphia. She has more than 20 years of experience, wrote numerous

articles on investing, hosted seminars and taught classes at Temple on investing and budgeting.

RUSSELL J. BUONO, CST '84, CST '87, CST '90, is chief of research and development at the Veteran's Affairs Medical Center in Coatesville, Pa. He also retains the associate professor of neurology title at Jefferson Medical College and the Children's Hospital of Philadelphia.

ERIC FOSTER, CLA '84, SBM '99, CLA '03, is a study director at Temple's Institute for Survey Research and an adjunct faculty member at the Wharton School at Penn.

RONALD C. KERINS, JR., ENG '84, joined Greyhawk, an employee-owned and operated construction/program management and consulting firm in Moorestown, N.J., as a senior executive. He will be responsible for regional business development in the private sector.

MICHAEL CALLAHAN, SCT '85, a contributing editor for *O at Home* and *Golf Digest Index* magazines, and an adjunct instructor in the school of Science and Technology at Temple, was named articles editor at *Philadelphia* magazine. He is a former deputy editor for *Marie Claire* and *Cosmopolitan*.

ANDREW ORTH, SCT '85, a freelance photographer currently living in Los Angeles, Ca., exhibited 40 of his photographs at the Reading Public Museum in Reading, Pa. The exhibit began on July 14 and continued through September 23. For more information, visit www.readingpublic-museum.org.

DAVID SMEDLEY, CLA '85, CLA '87, accepted a position as director of financial aid and registrar at the Institute of World Politics in Washington, D.C. He was previously the associate director of financial aid at Gwynedd-Mercy College.

AL A. KAZICKAS, JR., ENG '86, a registered professional engineer, joined STV Inc. as vice president and manager of Pennsylvania highway and bridge operations with the firm's national transportation and infrastructure division. STV is located in Douglassville, Pa. and is a national leader in planning and designing infrastructure, transportation systems and facilities.

RICK A. SERAIVA, ENG '86, advanced to the rank of captain in the United States Navy. He received an assignment to Portsmouth Naval Shipyard, where he became the chief engineer and planning officer, a department head position with more than 200 engineers and technicians that supports Los Angeles class submarines' non-nuclear systems.

EUGENIO PALENZUELA, TYL '87, is president of Palenzuela & Hevia Design Group, Inc., a Miami-based architecture, interior design and planning firm. He designed projects in the educational, retail and residential fields and was recently awarded three projects by the Miami-Dade County school board.

BILLIE TRAVALINI, CLA '88, director of the Delaware Literary Conference, organized the New Castle Writers' Conference, which was co-sponsored by the Delaware Literary Connection and Wilmington College. The conference featured Temple literature and creative writing professor Joan Mellen.

TONYA MARTIN, SCT '89, is the children's books editor at Raincoast Books in Vancouver, British Columbia, Canada. Previously the executive director at Scholastic, Inc., she is responsible for acquiring and editing young adult and middle-grade fiction and non-fiction, as well as children's picture books.

JAMES J. MCMASTER, TYL '89, is vice president of operations and development at Bergey Creative Group in Harleysville, Pa. He oversees the day-to-day business

of the agency, including managing client relationships and business development.

KEVIN J. MCNAMARA, POD '89, vice president of Independence Seaport Museum in Philadelphia, was selected for "Executive Program for Nonprofit Leaders — Arts," a two-week intensive leadership advancement program at Stanford University.

The 1990s

LAURADA BYERS, SBM '90, co-founder of the Russell Byers Charter School in Philadelphia, received the Take the Lead Award at the Girl Scouts of Southeastern Pennsylvania's 21st Annual Take the Lead Ceremony. The award is given to women who exemplify the highest achievements in their professions or fields of expertise.

EDWARD DODSON, CLA '90, director of the School of Cooperative Individualism in Cherry Hill, N.J., has two volumes of his study of political economy and history, *The Discovery of First Principles*, available without charge online. iUniverse publishing and Google have combined to make the volumes available.

DARLA B. HANLEY, MUS '90, MUS '91, was promoted to associate dean of graduate programs at Shenandoah Conservatory in Winchester, Va.

JAMES GARVEY, SBM '92, the associate dean for development at the University of Pennsylvania, earned his doctoral degree in higher education management from the university.

GREGORY WHETSTONE, SSA '92, SSA '95, received his doctorate in education from Wilmington College. He is presently a medical policy analyst with the Social Security Administration in Baltimore.

JULIANNE BLOISE, SCT '93, is manager of public relations and external affairs at Central Catholic

High School in Lawrence, Mass. She is responsible for overseeing all media relations, corporate and foundation relations and producing the school's student/alumni magazine. She worked previously at *The Eagle-Tribune* newspaper.

NICHOLAS DiFONZO, CLA '93, CLA '94, a professor of psychology at the Rochester Institute of Technology, co-wrote a book titled *Rumor Psychology: Social and Organizational Approaches*, with **PRASHANT BORDIA**, CLA '95, CLA '96. It is published by the American Psychological Association Press.

ILYSE PERLOFF, CLA '93, is a special education teacher at Phoenixville Area High School in Phoenixville, Pa. She is working toward earning certification in elementary education at Chestnut Hill College.

SONIA M. CALVANO, SBM '94, director of human resources at Prudential Fox & Roach Realtors in Devon, Pa., received her senior professional in human resources designation. She lives in East Norriton, Pa.

PRASHANT BORDIA, CLA '95, CLA '96, an associate professor in the school of management at the University of South Australia, co-wrote *Rumor Psychology: Social and Organizational Approaches*, with **NICHOLAS DiFONZO**, CLA '93, CLA '94. The book is published by the American Psychological Association Press.

RAYNER PAILUS, SBM '95, is a regional bank manager living in Malaysia for the past 12 years.

WILLIAM BLAIR, CLA '96, was promoted to the rank of major in the United States Army. He previously was chief future operations of the 2nd Infantry Division in Korea.

BENJAMIN KUHN, LAW '96, joined forces with Ned Ball to form Kuhn & Ball, located in Raleigh, N.C. Their practice will focus on commer-

cial real estate and land use matters across North Carolina.

DR. VEIRDRE RIDGLEY-JACKSON, EDU '96, executive director and founder of New Life Child & Family Development Center, a Christian day care center for children of the Norristown Area School District, was recognized by the *Philadelphia Business Journal* as a recipient of the 40 Under 40 Award. Under her guidance, the center expanded to include several out-of-school programs supporting nearly 300 children and their families.

JODEEN M. HOBBS, LAW '97, a shareholder at the Philadelphia law firm of Miller, Alfano & Raspanti, gave a presentation to the Chester County Bar Association's Criminal Law Section titled "A Review of Coming Attractions: Current and Anticipated Fall Out from Booker," which covered the evolving law surrounding the federal sentencing guidelines advisory in *United States v. Booker*.

PAUL K. LEGAARD, LAW '97, a respected patent and intellectual property attorney, joined Pepper Hamilton, a Philadelphia-based law firm, as a partner in the firm's Berwyn, Pa. office.

B. LEIGH NANNEY, THM '97, is a development associate at Scottsdale Museum of Contemporary Arts in Scottsdale, Ariz. She worked previously with the Arizona Cardinals as assistant director of Cardinal Charities.

GERALD NOVAK, MUS '98, a Marine staff sergeant, is a percussionist and the newest member of the United States Marine Band, America's oldest professional musical organization. The band has performed for every presidential inauguration since 1801, and its primary mission is to provide music for the U.S. president and the commandant of the Marine Corps.

JENNIFER RAUCH, SCT '98, is an assistant professor of journalism at Long Island University in Brooklyn, N.Y.

CAROLINE WEINERT-KRALL, EDU '98, a part-time wraparound therapist in the Central, Pa. public school system, received national counselor certification and licensed professional counselor designation in Pennsylvania.

ANDREW DENZEL, SBM '99, is president of The Denzel Group, a professional employment search firm located in Bethlehem, Pa. that connects companies with top IT and engineering professionals. He was previously director of U.S. sales at Glotel, Inc.

ZIPPORAH MCCOY, EDU '99, a first grade teacher with the Richmond Public School System in Richmond, Va., received her masters of divinity degree from Union Theological Seminary upon her return from a travel seminar to Egypt, Jordan, Palestine and Israel.

MIMI SOMSANITH, SCT '99, SBM '07, accepted a position as a search consultant at Solomon-EdwardsGroup in Wayne, Pa. She previously was head of finance at Hancock Management Group. In addition, she consults with students and entrepreneurs on everything from resume building to small business management.

The 2000s

BRIAN LIPSKY, SCT '00, has once again been accepted to Temple University, where he will pursue a degree in mathematics in the College of Science and Technology. As a consultant, he provided computer-related services to his clients.

JOAN METZLER, LAW '00, is the assistant director of admissions for the law school at Quinnipiac University in Hamden, Conn. She was previously the assistant city solicitor in the child welfare unit for the City of Philadelphia law department.

RYAN J. RABINOWITZ, SBM '00, is a manager in the client service team at

MEL GREENBERG

the godfather of women's hoops

In the mid-1960s, the idea of building a career in women's sports was laughable. After all, women were hardly considered in collegiate athletics until at least 1972. That was the year landmark federal legislation — known as Title IX — outlawed discrimination against women in all areas of higher education, including sports.

For Mel Greenberg, *SCT '69*, a career in journalism seemed equally unlikely. "I was terrible at math and English," he admits. But after taking journalism classes at Temple, he learned that journalistic writing had its own unique style. "I can do this," he thought at the time. And he could. By his senior year, Greenberg was a copy boy for *The Philadelphia Inquirer*.

His career as a journalist was already in motion by the time he graduated, although Greenberg had not yet carved out his niche as a writer. He took assignments covering a bit of everything. "People had beats they had been on forever," he explains. "You couldn't aspire to those positions because those guys had long shelf lives."

But his career would soon veer in a new direction. In addition to writing, Greenberg possessed a passion for basketball. He was the team manager when Temple's basketball squad won the National Invitational Tournament in 1969. Three years later, just as Congress was debating the merits of Title IX, nearby Immaculata University won the first women's national collegiate basketball title. The team went on to win the next two titles, and Greenberg found his journalistic focus.

His early coverage of women's basketball helped put it on the map in Philadelphia and around the country. When Jay Searcy arrived at the *Inquirer* in 1975 as sports editor, he convinced Greenberg to start a women's college basketball poll. In little more than a year, a weekly poll of the top 20 teams was in place, which later expanded to include the top 25. Since then, 121 teams have been ranked 12,388 times.

Today, Greenberg's name is synonymous with women's basketball journalism. He believed in the future of women's bas-

ketball and zealously reported on it when few others were interested. His steadfast dedication was rewarded last June, when he was inducted into the Women's Basketball Hall of Fame in Knoxville, Tenn.

Not only is he Temple's first inductee into the Hall of Fame, he is also the first media professional to be so honored. In his



JOSEPH V. LABOLITO

acceptance speech, he said, "I did not aspire to be any kind of hero when I undertook Jay's mission. I just wanted to do the best journalistic job I could to make things better for future writers."

Greenberg has accomplished much more than changing the landscape for writers; he has dramatically changed women's hoops on both the collegiate and professional levels. He has covered nearly every collegiate championship since 1976. Moreover, he has reported on the WNBA since its inception and covered the two-year life of its competitor, the American Basketball League.

Greenberg's 35-year career and expansive knowledge of the sport has earned him a host of nicknames. Early on, he was often called "Mr. Women's Basketball" and later "The Godfather." Most recently and commonly, he is known as "The Guru." Regardless of which moniker you choose, Greenberg can only be described as a pioneer and champion of women's basketball.

— SUSAN DECOTEAU-FERRIER

Turner Investment Partners, an investment firm in Berwyn, Pa., which manages assets on behalf of institutions and individuals. He was formerly a marketing associate for client service at Schneider Capital Management.

GREGORY E. WILLIAMS, LAW '00, a judge on the Trenton Municipal Court, was profiled during Black History Month on New Jersey Network News as one of the youngest judges in New Jersey.

ANTHONY GILBERT, SCT '01, is the managing editor of AXG, a

Maryland-based consulting firm he founded; his major client is Nike, Inc. Gilbert appeared on several network and cable television programs, including ESPN 2's *It's the Shoes*.

VINCE MANZE, SCT '01, was promoted to head of program plan-

rocketing to success

KATHLEEN JENKINS-MANN

Many of us look at the stars with wonder, and dream of traveling through outer space. For Kathleen Jenkins-Mann, *ENG '83*, that dream inspired her to help design some of the world's most advanced space orbiters.

As associate head of flight systems integration and testing at NASA's Goddard Space Flight Center in Greenbelt, Md., Jenkins-Mann leads a team of engineers and interacts with an international group of scientists in testing space flight hardware.

Watching the first liftoff of the Space Shuttle Challenger got her hooked. Just weeks away from graduation, the mechanical engineering major sat with her eyes glued to a television in the old Student Activities Center as the Challenger rocketed skyward. "At that moment," Jenkins-Mann explains, "I knew what I wanted to do; I vowed one day to work on an aerospace vehicle like the space shuttle."

In her first job as an aerospace engineer with RCA Aerospace Corporation, she was assigned to the Challenger project. After her time at RCA, she spent the next few years as a senior mechanical lead for Harris Corporation in Florida, and was working there in 1986 when the Challenger exploded seconds after takeoff.

"It was a very sad time," she recalls. "We all took it personally, but ultimately we pulled together. When a tragedy like that occurs, often it fuels your commitment to discover what happened and why, and then find solutions."

At NASA, Jenkins-Mann was integral to the success of the Tropical Rainfall Measuring Mission. It was the first operation dedicated to measuring tropical and subtropical rainfall through microwave and visible infrared sensors, including the first space-borne rain radar. In this joint venture with NASA and the Japanese Space Agency, she was

responsible for formulating ground- and flight-safety requirements on the launch vehicle that took off from Japan.

Upon successful completion of that mission, Jenkins-Mann applied her skills and expertise to the Hubble Space Telescope, the renowned orbiting telescope that has become one of the most important instruments in the history of astronomy. As the lead structural dynamics engineer and test and verification manager, she oversaw the development and implementation of very technically complex and often one-of-a-kind structural tests of Hubble subsystems.

A native Philadelphian, Jenkins-Mann grew up in Southwest Philly. At Temple in the early '80s, she found that engineering was most certainly a male-dominated field. But she credits several engineering professors with encouraging her: Steven Ridenour, Robert Yantorno, Brian Butz and Alma Forman. She says they influence her even today.

What advice does this accomplished woman have for other women who may want to follow in her footsteps? "Persevere," she says. "You will have some positive and some not-so-positive experiences. Stay focused on the positive."

Of the career that has led her to work on some of the most significant space flight projects of our time, Jenkins-Mann says, "Every day, in hundreds of ways, Americans are affected positively by NASA technology. I feel privileged and extremely grateful to be part of these important programs. This has been — and continues to be — an incredible ride." — *KIM FISCHER*



ning, scheduling and strategy for NBC, a newly created position. He served previously as co-prexy and creative director of the NBC Agency and is responsible for many of NBC's popular promotional campaigns, including "Must-See TV" and "Save the Cheerleader, Save the World."

SAMANTHA EVIAN, LAW '03, an associate in the family law group at Spector, Gadon & Rosen in Philadelphia, helped to launch the

Philadelphia chapter of the Old Girls Network, a creative business development group for women professionals.

CHRISTIAN GLUDICE, SCT '03, published *Hands of Stone: The Life and Legend of Roberto Duran*, a 320-page biography.

GREG MCGUNAGLE, SCT '03, has been promoted to associate vice president of Quinn & Co. Public Relations in New York City.

EDWARD OSWALD, SCT '03, is a senior writer for BetaNews.com, an online technology publication. He worked previously at WMGM-TV 40 in Atlantic City and Blue Ridge Communications Cable-11 in Ephrata, Pa.

CHERIE DENNIS, SCT '04, an aspiring plus size model, was featured in *Stilettoes & Curves Full-Figured Fashion Show* at the Pennsylvania Convention Center in June, presented by the Full Figured Diva Academy in the Maryland/ Washington, D.C. area. She hopes to become an author and a professor of intercultural communications. She will enter the master's program in global communications at the American University of Paris this fall.

KEITH HAUBER, CLA '04, received a master's degree in forensic sexology from Curtin University of Technology in Perth, Western Australia, and accepted a position in the Division of Youth and Family Services in New Jersey as a family service specialist. He is responsible for investigating the alleged abuse and neglect of children. Hauber is married to a fellow Temple graduate, **FATEMA MOOKHTIAR, SBM '04**.

DAVID M. MAZZONI, SCT '04, was named associate creative director and copywriter at Stream Companies in Malvern, Pa., providing marketing, advertising and promotional services. He was previously an editor with NFL Films in Mt. Laurel, N.J., and co-wrote and directed *The 4th Dimension*, which was screened in film festivals around the world.

MONICA MERCADO, TYL '04, has joined the design team at Brown Craig Turner, an architectural, planning and interior design firm in Baltimore, Md.

THOMAS TREZZA, CHP '05, owner of Physical Therapy Services of Morristown, N.J., established the Drive for Autism Foundation, a charitable organization he started with his father to raise funds for

schools and other non-profits committed to educating and treating people with autism.

LAUREN ACQUAROLE, CLA '05, is a clinical research specialist at Thomas Jefferson University in the Center for Applied Research on Aging and Health. She is working on various government-funded grants pertaining to the behavioral aspects of gerontology.

LYDIA WHITE, ENG '05, accepted a position at Dewberry and Davis in

Lanham, Md., as engineer I in land development. She will be working on stormwater, grading sediment and erosion control. White was previously a project specialist at Meridian Ventures Inc.

NITA R. BLUM, SCT '06, was the key wardrobe stylist on an independent horror film *Death on Demand*, which was distributed in early 2007. She also worked with *Sesame Street* as art department assistant on an interactive video with actress Sarah Jessica Parker. Blum

lives in Cortlandt Manor, N.Y.

RYAN DRUMMOND, TYL '06, was the winning window display designer of a window display competition hosted by Artemide in Philadelphia. He was honored for his first place submission in February.

MELISSA KELLY, SCT '06, a graphic designer at SmithPrints, Inc., in Chalfont, Pa., launched Boxer Graphics, a photography and graphics company.

DANNY WOODBURN *revealing himself through acting*

Despite having acted with Hollywood icons Robin Williams, Ed Norton and Danny DeVito, Danny Woodburn, *SCT '89*, keeps his feet firmly on the ground.

Maybe it's because he was born and raised in Philadelphia's North Hills neighborhood, where he fell asleep each night listening to the rattling of the freight cars hurrying by. Or maybe it's because he remembers a secure childhood with parents who, during the summer, would take him to splash in the fountains outside the Philadelphia Museum of Art. Or possibly, his down-to-earth demeanor arises from the four-and-a-half months he spent in a full body cast at the age of 18.

Prior to emergency leg surgery and subsequent hospitalization that left him unable to move, Woodburn had been accepted to the pre-med program at Penn. Instead of moving into dorms in West Philly, he found himself staring at the white ceiling tiles of the hospital. "I started more seriously considering what I really wanted to do with the rest of my life," he explains.

Could he see himself succeeding as a doctor? Yes. But could he see that profession bringing him the same level of joy and satisfaction he found in the arts? The answer, finally, was no.

Having heard that Temple offered an excellent film program, Woodburn applied for and received a partial scholarship. He soon proved himself to be a consummate actor and comedian. It was during an improvisational exercise in a class with Professor Kevin Cotter that Woodburn recalls his earliest "ah-ha!" moment.

"We were goofing around in a scene and there was this sudden click for me where I clearly understood what acting is about. I realized that it's not about putting on a face, predicting your reactions or pretending to feel something you don't. It's about actually *feeling* each moment as it happens."

Over the years, Woodburn has held onto this realization and continues to succeed as an actor, earning solid roles in films such as *Death to Smoochy*, *Things You Can Tell Just By Looking at Her* and *The Flintstones in Viva Las Vegas*. He is also a stand-up comedian and has appeared in numerous television shows, most notably as Kramer's friend Mickey on the acclaimed series *Seinfeld*.

Woodburn is presently filming on the set of Disney Channel's *Corey in the House* and he remains active with the Screen Actors Guild, Performers with Disabilities Committee. As an actor who is also a little person, he has experienced firsthand the prejudice surrounding dwarfism. When faced with a script that reinforces stereotypical representations of little people, Woodburn speaks up. Sometimes, the director or writer is willing to listen. Sometimes not. "I have had to turn down dozens of roles that would've paid the bills...but I wouldn't have felt good doing them."

The advice he offers young actors has a universal ring. "You have to be willing to expose and reveal yourself. You have to be able to admit, 'This hurts me or this brings me joy.' If you can do that, you'll find success." Woodburn is proof that this is true.

— AIMEE LABRIE



SUZANNE SMITH *telling stories through sports*

As America's most-popular sport, football is many things to many people. At its most basic level, the game is a battle between rivals. At its most advanced, football is a metaphor for the fast-paced, win-at-all-costs nature of modern society.



For Suzanne Smith, who directs NFL television broadcasts for CBS Sports, each game is a story, and it's her job to tell it successfully to millions of fans.

Every Sunday from September through January, Smith, *SCT '80*, calls the shots from inside darkened director's booths at stadiums across the country. She juggles the images beamed to her by 10 cameras, and chooses one that best expresses the game at that moment.

Her work is integral and yet unheralded, consisting of equal parts creativity, clairvoyance and technological savvy. Although viewers can't tell whether a man or a woman is directing the game, Smith is one of only a few woman directors in big-time television sports. "There were some struggles along the way," she admits. "If an opening came down to me and a man, sometimes he got the opportunity. But in the end, if you do the job you're supposed to do — and do it well — you'll find success."

In high school, she played every sport she could before coming to Temple on a volleyball scholarship. Even before she reached campus, Smith had experience telling stories on TV. "I worked in a commercial editing house in New York City owned by my uncle," she recalls. "He was telling a story in 30 seconds, and it gave me a sense of what it takes to put together a television message."

Once at Temple, she credits a university-sponsored internship at WPHL with helping her make connections in the world of television production. Station administrators asked her to return the following semester, which eventually led to freelance

gigs for the Phillies, the morning news show at WKBS in Philadelphia and Big Five college basketball.

When the NFL went on strike in 1982, CBS and other networks filled the air time with boxing from Atlantic City, which introduced Smith to the major networks. She joined CBS the following year and quickly took on roles as an associate producer and associate director. But it wasn't until 1988 that she landed her first directing credit at CBS.

"We were preparing to cover the indoor volleyball championships," she recalls. "Our show from the previous year looked like a basketball game, but volleyball on television should be more like tennis."

Smith told her boss, who replied, "If you think you can do it better, here's your chance." The rest is television history.

Like an artist working in various media, Smith has directed and produced college football, basketball, tennis, auto racing, skiing, boxing and the Olympics. But pro football remains her favorite.

"You never know when you're going to get a special game," she explains. "I was directing when Peyton Manning broke the record for touchdown passes in a season. It was exciting, but it also added responsibility to tell the story well."

Last January, Smith's directorial expertise took her to a unique sporting event that she could never have imagined covering. CBS sent Smith and two broadcasters to Iraq to stage a touch football game between U.S. soldiers as part of the network's Super Bowl telecast. Dubbed the Baghdad Bowl, the soldiers created a desert football field, dressed up in official jerseys and even used an old Super Bowl coin to flip at the start of their game.

"You can't change what's happening over there, and that wasn't our purpose," Smith says. "We wanted them to concentrate on something other than the fighting — to bring a little bit of normalcy and a little bit of home to them."

— JOSEPH McLAUGHLIN

ROBERT L. KING, *LAW '06*, an attorney in Johnson City, Tenn., was recognized as a 2006 mid-south "Super Lawyer." He focuses his practice on litigation and health care.

BROOKE MARTIN, *SCT '06*, is co-anchor of the 5:30 and 11:30 p.m. newscasts for the local NBC affiliate WMGT-TV in Macon, Ga. She was responsible for breaking a two-part story on middle Georgia's alarming rate of female HIV last November.

SHARON RUEDEMAN, *SCT '06*, was promoted to production assistant for World Wrestling Entertainment in Stamford, Conn., in the dot.com/digital media department. She edits videos for the Web and for mobile phones.

JOSEPH WHITT, *MUS '06*, a musician who has performed in concert halls and leading performance venues in more than 20 countries, including the Kimmel Center in Philadelphia, recently released an

original recording that can be heard around the world, including on WRTI.

JAMIE BRILL, *SBM '07*, an account coordinator, joined Bergey Creative Group in Harleysville, Pa. and supports agency strategy and client relations. She is responsible for the day-to-day project management of clients' campaigns.

'20s

Anthony C. Chicone, *SBM* '27

'30s

Jean H. Reinhart, *EDU* '31
 Elizabeth D. Walter, *AMB* '31
 Minerva O. Pollock, *SBM* '34
 Edward M. Kavjian, *MED* '35
 Carol R. Simon, *SCT* '35
 Paul Berson, *DEN* '37
 Samuel Izenberg, *DEN* '38
 Julia W. Keith, *SBM* '38
 Gertrude B. Owings, *CHP* '38
 Christopher Pappas, *SBM* '38
 Florence J. Raysor, *CLA* '38
 Nancy L. Zastrow, *EDU* '38
 Wesley E. Brittin, *CLA* '39
 Silas H. Hindman, *DEN* '39
 I. Joel Kenig, *MED* '39
 Elizabeth Landes, *CLA* '39

'40s

Joseph E. Crowley, *LAW* '40
 Victoria Balin, *POD* '41
 Harry A. Beck, *POD* '41
 Adele S. Healy, *EDU* '41
 Elaine G. Heine, *SCT* '41,
EDU '73
 Edith Eckstein, *MED* '42
 C. Arthur S. Hollinger, *EDU* '42
 Murry Knoblauch, *SCT* '42
 George P. Laskaris, *DEN* '42
 James J. Powers, *SBM* '42
 Albert Schreiber, *PHR* '42
 Christos G. Stergis, *CLA* '42
 George L. Wallach, *DEN* '42
 Diva A. Wieck, *CAS* '42
 Harold R. Kremer, *SCT* '43
 Richard R. Mast, *DEN* '43
 Edward Deska, *MUS* '44,
EDU '46
 Leatrice Z. German, *EDU* '44
 Jacqueline Steck, *SCT* '44,
CLA '47
 M. Michael Solomon, *CLA* '45,
CLA '47
 Irving Abrams, *DEN* '47
 Blossom A. Baron, *NUR* '47
 Helen D. Farnish, *NUR* '47
 Morris Hulsizer, *CST* '47,
EDU '51
 John H. Longaker, *ENG* '47
 Willard D. Adams, *DEN* '48
 Francis J. Faggella, *DEN* '48
 Betty F. Hoppenwasser, *CLA* '48

Nancy E. Johnson, *CHP* '48
 Leonard Nason, *POD* '48
 Julian R. Clemens, *ENG* '49
 Carmen Cullurafi, *SBM* '49
 F. Willson Daily, *MED* '49
 Charles Fitz Jr., *EDU* '49,
THE '50, *THE* '55
 Clifford Green, *SBM* '49,
LAW '51
 Harry J. Kenny, *SBM* '49

'50s

Leon W. Bell, *SBM* '50
 Sol Farbstein, *CCL* '50
 Theodora M. Lerner, *EDU* '50
 James Edward Lewis Sr., *TYL* '50
 Sonya R. Markowitz, *EDU* '50
 Mary W. Berry, *CHP* '51
 James W. Cullen, *MUS* '51,
EDU '53
 Donald R. Fink, *POD* '51
 A. Arthur Hanamirian,
SBM '51, *LAW* '57
 Elias Lenard, *SBM* '51
 Robert L. McCardell, *EDU* '51
 Marion Richardson, *CHP* '51
 Florence Schoenbrun, *SBM* '51
 Joseph S. Skraban, *ENG* '51
 James A. Turner, *DEN* '51
 John A. Graham, *CLA* '52
 Richard F. Katz, *PHR* '52
 Joseph P. O'Donnell, *ENG* '52
 Muriel C. Rusten, *SBM* '52
 Edward P. Taddei Sr., *EDU* '52
 James H. Yates, *CCL* '52
 Sheldon R. Bender, *MED* '53
 David Handler, *CST* '53
 David P. Morgenstern, *CLA* '53,
CLA '61, *CLA* '67
 Dale L. Reese, *SBM* '53
 Harry W. Wilcke III, *MED* '53
 Shirley C. Buck, *CCL* '54
 Alice B. Fazekas, *EDU* '54
 Maryellen W. Pippi, *CHP* '54
 Leila P. Waters, *CST* '54
 Edward H. James, *EDU* '55
 Elizabeth W. Samuels, *EDU* '55
 Anna Marie Chirico, *MED* '56
 Roslyn S. Goldstein, *EDU* '56
 Mary K. Humphreys, *EDU* '56
 Dorothy M. Lochner, *EDU* '56
 Joan Mosenson, *EDU* '56
 John R. Morgan III, *CST* '57
 Edward Goldenbaum, *CST* '58
 Ralph W. Holmes, *CCL* '58

Rosemary O. Vergis, *NUR* '59

'60s

William Fusselbaugh Jr.,
SBM '60
 Frank A. Melone, *CLA* '60
 Audrey M. Pappenberger,
EDU '60
 Ernest E. Markel, *EDU* '61
 Sameeh S. Toukan, *CLA* '61
 Janee A. Friedmann, *EDU* '62
 Herbert J. Hutton, *LAW* '62
 Ruth E. Pennypacker, *EDU* '62
 Andree Amelotte, *CHP* '63
 Alice M. Blackburn, *EDU* '63
 Charles Burton Jr., *CCL* '63
 Louis D. Ellis, *CST* '63
 Mary Anne Rossiter, *CHP* '63
 Albert W. Schopfer Jr., *EDU* '63
 Frank M. Rocco III, *DEN* '64
 David C. Townsend, *SBM* '64
 Thomas Newman, *ENG* '65,
ENG '69
 Joseph J. Tafe, *LAW* '65
 Charles T. Cliver, *EDU* '67,
EDU '72
 Betty J. McCain, *EDU* '67
 Lotta H. Riefkohl, *MUS* '67
 Robert F. Kaplan, *PHR* '68
 Arthur W. Keyser Jr., *CCL* '68
 Martin J. Abramson, *SBM* '69,
LAW '72
 Carolyn M. Lloyd, *EDU* '69
 Marie O'Brien, *SCT* '69,
CLA '74

'70s

 Richard B. Whitman Jr.,
ENG '70
 Ray M. Lauffer, *CST* '71
 Helen J. Haasis, *EDU* '71,
EDU '76
 Jacqueline K. Caruso, *SSA* '72
 Edward Grant, *EDU* '72,
EDU '75, *LAW* '80
 Lawrence Cesare Jr., *EDU* '73
 Larry A. Gilliard, *CST* '73
 Susan Hayduk, *DEN* '74
 Edwin B. Martin Jr., *POD* '74
 James E. Milder, *MED* '74
 Alan B. Paterson, *MUS* '74
 Marsha D. Brotman, *CHP* '75
 Marci Lynn Resnick, *EDU* '75,
EDU '79
 Zigmund Wisniewski Jr., *SBM* '75
 Loris O. King, *MED* '76

Henry J. Lawyer, *ENG* '76
 James P. O'Donnell Sr., *EDU* '76
 Deborah B. Turner, *CHP* '76
 Loretta J. Lewis, *CLA* '77
 Cecelia J. Maiese, *CLA* '77
 Max A. Lebow, *SCT* '78
 Brian J. Ficek, *SBM* '79

'80s

Diana Achille, *DEN* '80
 Louise E. Ames, *CST* '80
 Julia L. Kittrell, *CHP* '80
 Jerome J. Kellar, *SCT* '81
 Stephen R. MacLean, *ENG* '81
 Garland E. Newcomb III,
MUS '81
 Ronald J. Nowak, *SBM* '82
 Robert A. Romans, *AMB* '82
 Juan Noyles, *CST* '85
 Horace H. Ashby Jr., *EDU* '86
 Theresa A. Dellaquila, *TYL* '86
 Amy L. Hodgkinson, *CLA* '86
 Marie A. Campher, *CLA* '87
 Mary Lynn Fisher, *CLA* '87
 Susan H. Margulies, *CLA* '87
 Steven J. Nixon Sr., *SBM* '88

'90s

John J. Fagan, *CST* '90
 Marcus A. Goldberg, *MUS* '90
 S. Bruce Langfeld, *CLA* '91
 Robert J. Lempert, *CHP* '91
 Jane E. Lanham, *ENG* '92
 Josephine Johnson, *EDU* '94,
EDU '04
 Robin D. Leary, *SCT* '94
 Bernard M. Stiefel, *EDU* '94
 Anne Ferrari, *CHP* '96
 Eleanora S. Satchell, *CLA* '97

'00s

Anh Lam, *CHP* '00
 Wilhelmina L. Thomas, *CHP* '00
 Peter C. Tselios, *CLA* '02
 Shawn E. Zidek, *EDU* '02
 Eamonn T. McGarvey, *CST* '04
 Timothy J. Martin, *SCT* '05
 Deborah A. Morris, *AMB* '05
 Jeanine Musselman, *EDU* '05



Temple students tour the warehouse of Rosenau Brothers, manufacturers of children's clothing.

American post-war prosperity moved into high gear in 1954, with U.S. businesses leading the way. A surging bull market boosted stock prices past their 1929 peak, and on the last day of the year, the Dow-Jones Industrial Average hit an all-time high. It was the country's second-best business year on record, and the best peacetime year ever.

Temple students enjoyed the fruits of America's business boom. Some may have ridden in a Chevrolet Corvette, which began mass production that year, or watched one of the first color televisions, manufactured by RCA. In the classroom and across the city, they learned how to make their way in the new economy. In addition to business courses, students participated in various clubs and organizations, including the Business Education Club and Society for the Advancement of Management.

Women students did more than major in business administration or accounting. They participated in Phi Gamma Nu, the national association for women in business, and traveled across the region to see firsthand how entrepreneurs managed their operations,

interviewing everyone from foundry owners to workers at meat-packing plants.

Today, Temple remains a campus committed to instructing students in entrepreneurship, with the Fox School of Business at the fore. Its Innovation and Entrepreneurship Institute sponsors an annual university-wide Business Innovation Competition that helps students, faculty, staff and alumni develop their ideas for market.

Temple's commitment to women in business has never wavered. Founded in 2000, the League for Entrepreneurial Women is run jointly by the Fox School, School of Communications and Theater and School of Tourism and Hospitality Management. It has brought successful businesswomen to campus for day-long conferences, conducted research and established networking opportunities.

There's little wonder that the *Princeton Review* named Temple one of its top 25 entrepreneurial campuses. The spark of business innovation that has called Temple home since the post-World War II boom years grows brighter in the students of today.

Basketball Season is Right Around the Corner!



Join the action at the Liacouras Center as head coaches Dawn Staley and Fran Dunphy lead the Owls to victory.

Purchase your men's and women's season or individual game tickets today:

To order full or partial season ticket plans by phone, call 215-204-8499.

To purchase individual game tickets by phone, call 1-800-298-4200.

To purchase tickets online, visit owlsports.cstv.com.

Group tickets are available at discounted rates.



Temple Review
Temple University
1601 N. Broad St.
USB 601
Philadelphia, PA 19122-6099

Non-Profit
Organization
U.S. Postage
PAID
Temple
University

Cherry & White: It's in Your Blood. Is It in Your Network?

Career and Social Networking:

View and post resumés, search for jobs, connect with message boards and find alumni mentors.

Events:

Spice up your social life and feed your brain at alumni association sponsored activities such as sporting events, reunions, seminars, symposia and much more.

Alumni Groups:

Connect with alumni in your local area, find exciting alumni outings and join shared interest groups.

Class Notes:

Share your good news and find updates on your classmates' careers, families and accomplishments.

Photo Galleries:

Browse photos of recent alumni events, changes on campus and alumni members.

Online Giving:

Support access to excellence at Temple University by making a donation online.

myowlspace.com is a service of the Temple University Alumni Association and Institutional Advancement. For more information, visit **myowlspace.com** or e-mail **alumrel@temple.edu**.

You never know *hooooo* you'll find!

