

Doing IT right

Temple named a 'best place to work,' 'bold enterprise' in IT. See page 2.



Football opener

Catch the Owls at Arizona State on 9/1 on 1210AM. See page 7.



Move-in

Crates, clothes, families and the talented Class of '09. See page 8.

TEMPLE TIMES

Morrison named dean of Art School

The noted artist and educator will lead Tyler through its relocation to Main Campus.

By Mark Eyerly
mark.eyerly@temple.edu

Distinguished artist and art educator Keith Morrison has been named dean of the Tyler School of Art.

Morrison, who joined Temple effective July 1, most recently was dean of the College of Creative Arts at San Francisco State University.

"Keith Morrison's accomplishments as an artist, curator, scholar and educational administrator make him the ideal person to lead Temple's Tyler School of Art as it prepares to relocate from the suburbs into a new, world-class, \$75 million facility on our Main Campus in Philadelphia," President David Adamany said.

Morrison, who in addition to his current post at San Francisco State has been a teacher or administrator at the University of Michigan, University of Maryland at College Park, University of Illinois at Chicago, Fisk University, DePaul University and the San Francisco Art Institute, described Tyler as "one of the best comprehensive art schools in the nation, with programs in the fine arts that are second to none."

"Tyler and Temple are both on the move," Morrison added. "Temple's extensive recruitment of new faculty, the quality of its student body, and some \$400 million in construction projects — including

On Page 4

- Alperson named acting CLA dean
- Sadeghipour new acting CST dean
- Key posts filled across University



As dean, Keith Morrison, an accomplished artist, curator, scholar and educational administrator, will help lead the Tyler School of Art in its relocation from suburban Elkins Park into a new, world-class, \$75 million building on Main Campus.

an upcoming new home for Tyler that will be the envy of art schools around the world — make Temple one of the most exciting places in higher education today. I am thrilled about this opportunity."

Among his academic accomplishments, Morrison led the San Francisco Art Institute through its

first major revision of undergraduate and graduate programs in 15 years. At San Francisco State, Morrison redefined several academic programs and improved others to national prominence, and he promoted cultural exchanges between artists and scholars in the San Francisco Bay area and their counter-

"Tyler and Temple are both on the move. ... I am thrilled about this opportunity."

Keith Morrison
Dean of the Tyler School of Art

parts in Cuba, Taiwan, the Philippines and Japan.

Morrison's teaching experience includes courses in drawing, painting, lithography, art education, African-American art and others. He has lectured at institutions such as the Getty Museum, the Metropolitan Museum of Art and the Smithsonian Institution. Morrison has written essays for numerous exhibition catalogs and the popular press. A book about Morrison's art and art criticism by art historian Renee Ater, titled *Keith Morrison*, was published in March by Pomegranate Press.

Morrison's paintings and prints have been featured in many publications and exhibited across the United States and abroad. His works are included in numerous private and public collections, including those of Philadelphia's Pennsylvania Academy of the Fine Arts, the Corcoran Gallery of Art and the World Bank. He also has served as curator for exhibitions at Philadelphia's Brandywine Workshop, the University of Chicago and San Francisco State.

"It is hard to imagine how we could have found a person better suited to assume leadership of the Tyler School of Art at this critical time in its history," Provost Ira Schwartz said. "Keith Morrison has the artistic vision and leadership expertise to sustain and build upon

Morrison on page 4

Princeton Review: Temple 2nd in diversity

By Hillel J. Hoffmann
hillel.hoffmann@temple.edu

The 2006 edition of *The Best 361 Colleges*, the annual guide from the Princeton Review that hit bookstores last week, has one clear message about Temple: The diversity of Temple's student body is one of the University's greatest strengths.

Best Colleges, which is based on surveys of students, ranked Temple No. 2 on its list of most diverse student populations. In the guide's main entry on Temple, one student was quoted as saying, "We call it Diversity University." Other students called Temple a "huge melting pot" in which "everyone's differences become their connection to other people."

That wasn't the only good news about student diversity at Temple last week. According to projections from Temple's Office of Enrollment Management, this year's freshman class — a group that began moving in last Thursday — is more ethnically diverse than last year's.

Among the 3,950 students who were projected to enroll, about 700 are African American, up 5 percent from 2004-05. The percentage of Latino and Asian freshmen rose even more sharply: Approximately 150 Latinos were projected to enroll, up 15 percent from last year; and 450 Asians were projected to enroll, up 10 percent from last year. (These statistics do not capture many students of color, such as international students, who often identify themselves as "Other" when asked about their race.)

"I'm pleased by the cultural and

Princeton Review on page 5

Baseball's Wilson retires after 46 seasons

By Kevin Bonner
kbonner@temple.edu

Temple head baseball coach James "Skip" Wilson, who led the Owls to a pair of College World Series appearances and compiled 1,034 wins in 46 seasons, has decided to retire, Director of Athletics Bill Bradshaw announced on Aug. 29.

Wilson guided Temple to 14 NCAA Tournaments and 10 conference championships during his tenure, which currently is tied for the longest in Division I history with Virginia Tech's Chuck Hartman.

"It was a great lifetime of working with kids," Wilson said. "I'll miss teaching them how to play the game the right way."

Wilson, 75, holds the most wins of any coach in Temple history, regardless of sport, and captured his 1,000th win on March 14, 2004, when the Owls defeated Manhattan, 10-9. He finished his career with a record of 1,034-824-27 (.556) and ranks 29th in NCAA history in victories. Of the coaches ahead of him, only three (Bob Morgan of Indiana, Bob Hannah of Delaware and Bob Warn of Indiana State) are from

schools in the northern United States.

"Skip Wilson is a Temple and a Philadelphia collegiate baseball institution," Bradshaw said. "His legacy will not only be measured in terms of victories and championships, but in the number of lives he has positively affected."

The veteran mentor had a wealth of success during the 1970s. He led Temple to College World Series appearances in 1972 (third place) and 1977 (eighth) and earned four

Wilson on page 2



Baseball head coach James "Skip" Wilson retires holding 1,034 wins, the most of any Temple coach, regardless of sport. Wilson had more than 100 players sign professional contracts, including current Detroit Tigers outfielder Bobby Higginson.

Bits&PCs

Technology at Temple guide available

The Princeton Review ranked Temple No. 4 in its America's Most Connected Campuses survey for a reason. To find out why, check out an overview of Temple's computer resources in the fall semester's Technology at Temple guide, available in computer labs, the Help Desk, and also online in Acrobat format at www.temple.edu/cs/TechnologyatTemple.pdf.

O'Rourke reports on major initiatives

Timothy O'Rourke, vice president of computer and information services, has updated his online welcome message with a status report on major Computer Services initiatives such as the TECH Center, TUportal2 and start-of-the-semester activities. To read the message, go to www.temple.edu/cs/about.

TECH Center construction on schedule

Construction continues on the TECH Center at 12th Street and Montgomery Avenue. The TECH Center, a state-of-the-art technology facility with more than 600 computers available for student use, will be the largest of its kind in the nation. Features include specialized multimedia labs, breakout rooms for group study, wireless lounge space and a Starbucks café. The center also will provide cable TV stations streamed to the lab workstation desktops so students can watch MTV, listen to music and surf the Web while they work. For updates on the progress of the TECH Center, go to www.temple.edu/cs/techcenter.

Introducing TUportal2

Computer Services has a new TUportal waiting in the wings and we need your feedback! A Campus EAI Consortium grant earlier this year allowed Computer Services staff to build and create a new portal for the University community. While the current portal is limited for expansion possibilities, the new Oracle-driven product allows for more flexibility, customization and control. You can find everything on the portal you have always depended on, and much more. Some of the new features include:

- Your e-mail with a TUmail feed
- University news from Temple Today
- Custom resources for students, faculty, staff and future students
- Expanded links to Temple applications
- Google search engine
- Dictionary and thesaurus access
- Word of the Day
- Today in History
- Blog feeds
- Campus Webcam views
- Current weather conditions

You can provide feedback about the new portal by going to <http://tuportal2.temple.edu>. Click on the "Portal Feedback" link at the top of the page. Tell us what you think and enjoy the new portal!

TU earns high marks as IT workplace

Temple is one of only three universities nationwide cited in a *Computerworld* survey.

By Ted Boscia
tboscia@temple.edu

Recognizing Temple's appeal to information technology professionals, IDG's *Computerworld* named the University to its 12th annual list of the "Best Places to Work in IT," placing Temple on par with many of the country's top companies. The list of the top 100 work environments for IT professionals was part of *Computerworld's* June 27 issue and is online at www.computerworld.com/2005bestplaces.

Temple, ranked 64th, joins the University of Miami (Fla.) and the University of Pennsylvania as the only universities to be recognized.

In tabulating its list, *Computerworld* evaluates IT workplaces in several categories, including benefits, diversity, career development, training and retention. In addition, the newspaper surveyed many of Temple's 237 IT professionals, and their responses factored heavily in determining the rankings.

"The technology we provide our students, faculty and staff is second to none in the country," said Timothy O'Rourke, vice president

for computer and information services. "We have a great mix of new technology available for our IT professionals to work with and learn from. Being recognized by *Computerworld* is a tremendous honor and further confirmation that Temple is a great place to work."

Computerworld's annual feature describes Temple as a place where "IT workers deal with issues ranging from peer-to-peer file sharing to integrating wireless applications to supporting medical records." Temple is also lauded for its recent technological initiatives, including projects involving identity protection, Social Security number elimination, disaster recovery and document imaging.

"This year's Best Places to Work rankings represent companies across the industry that recognize how a strong commitment to and investment in employees is synonymous with creating a great IT work environment," said Don Tennant, editor-in-chief of *Computerworld*. "Once again, we found that IT professionals are looking for rewarding and challenging projects, access to leading-edge technologies, career growth and development and a comfortable work/life balance. Our Best Places companies not only offer these benefits, but do so in a manner that goes well above industry norms."

Companies that *Computerworld*

Temple wins 'CIO' award for 'boldness'

CIO magazine recently selected Temple University as one of 100 organizations that "truly exemplify a bold enterprise," exemplified by its willingness to take on risk for the sake of "great reward." The CIO 100 Awards, designated annually, honor organizations that demonstrate excellence and achievement in information technology.

Temple was included in the special "CIO 100" issue of the magazine in August, and received an original glass sculpture and a plaque at the August CIO 100 Symposium & Awards Ceremony in California. Computer Services Vice President Timothy C. O'Rourke, Associate Vice President Sheri Stahler and Associate Vice President Barbara Dolhan-

sky accepted the award on behalf of the University.

Temple was recognized in part for developing a \$17 million, 75,000-square-foot comprehensive student teaching, education, collaboration and help center, the TECH Center, which is currently under construction on Main Campus and will be operational by early 2006.

CIO praised Temple for having the "drive to reach for the prize, the guts to embrace the dangers, and the discipline to create a mitigation plan and stick to it."

Other organizations selected for this year's CIO 100 include Northeastern University, Educational Testing Service, General Motors, NFL Films, the Museum of Modern Art, and the University of Pittsburgh Medical Center.

ranked among the Best Places to Work include Aflac, Ernst & Young, Ford Motor Co., General Mills, Mastercard International, Staples Inc., UPS and Verizon Wireless.

"It's a very exciting time to be an employee at Temple, and this ranking is a wonderful recognition of everything that's going on here," said Deborah Hartnett, associate vice president for human resources. "We are focusing heavily on train-

ing and career development across the University, and that is reflected in the employee surveys that play a large role in this ranking."

This is not the first time Temple has earned national praise as a leader in computer and information technology. Last fall, The Princeton Review named Temple the fourth-most "connected campus" in the United States in its annual "Top 25 Most Connected Campuses" survey.

Baseball coach Wilson hanging up his spikes

Wilson from page 1

more NCAA bids during the decade. The Owls won the Middle Atlantic Conference title in 1972 and 1973 and captured four straight East Coast Conference championships from 1975 to 1978.

The Cherry and White moved to the Atlantic 10 in 1983 and immediately made its presence felt. Paced

by future major leaguers John Marzano and Jeff Manto, Temple won the A-10 and reached the NCAAs in 1983 and 1984.

Wilson made his last appearance in the NCAA Tournament after a dramatic 2001 season. After opening the year 0-14, the Owls went 24-14 the rest of the way and won the Atlantic 10.

Named the District Coach of the Year three times (1972, 1977 and 1978), Wilson was honored by the University on Feb. 16, 1981, when he was inducted into the Temple Athletics Hall of Fame. Wilson also had the distinction of being inducted into the American Baseball Coaches Association Hall of Fame on Jan. 11, 1987, and the Pennsylvania Sports Hall of Fame on April 7, 1994.

A Philadelphia native, Wilson had more than 100 players sign professional contracts. Most notable in the major leagues right now is Detroit Tigers outfielder Bobby Higginson. Other names of note are Philadelphia's own Joe Kerrigan, former pitching coach for the Philadelphia Phillies and Boston Red Sox manager; Jeff Manto, who spent 10 seasons in the big leagues

with seven teams; John Marzano, a former major leaguer who serves as a postgame analyst for Phillies games on Comcast SportsNet; Ed Wade, general manager for the Philadelphia Phillies; and Steve Javie, a highly regarded NBA referee.

Wilson graduated from Manayunk's St. John's High School in 1948 and went to Georgetown University on a basketball scholarship. But the next year, scouts took an interest in his baseball skills and he signed with the Philadelphia Athletics. Wilson spent several years in the A's farm system before enrolling at Temple in 1951.

Soon after, he received a draft notice from the Army and spent two years in the military. After graduating from Temple in 1958,

Wilson coached the Owls' freshman basketball team through the 1970-71 season.

He added baseball responsibilities in 1960, becoming Temple's head coach after serving one year as an assistant to former Owl athletic director Ernie Casale. Wilson, who

earned his master's degree in 1961 from Temple in health and physical education, taught at Roxborough High School for 34 years before retiring from teaching in February 1992.

A national search is under way for Wilson's replacement.

"Skip has been tremendous for college baseball, tremendous for Temple University and tremendous for the literally thousands of players who were privileged enough to be on his teams."

Ed Wade
Temple baseball player (1974-75), general manager, Philadelphia Phillies

TEMPLE TIMES

www.temple.edu/temple_times

September 1, 2005

Vol. 36, No. 2

Chief Communications Officer: Mark Eyerly mark.eyerly@temple.edu
Director of Communications: Ray Betzner rbetzner@temple.edu
Editor: Betsy Winter betsy.winter@temple.edu
Assistant Editor: Kevin Gardner kevin.gardner@temple.edu
Director, Health Sciences PR: Eryn Jeleiewicz eryn.dobeck@temple.edu
Contributing Writers: Barbara Baals barbara.baals@temple.edu
 Ted Boscia tboscia@temple.edu
 Heather Collins heather.collins@temple.edu
 James Duffy james.duffy@temple.edu
 Harriet Goodheart harriet.goodheart@temple.edu
 Tory Harris tah@temple.edu
 Hillel J. Hoffmann hillel.hoffmann@temple.edu
 Lisa Z. Meritz lisa.meritz@temple.edu
 Preston M. Moretz preston.moretz@temple.edu

For a complete beat list, visit www.temple.edu/news_media/staff.html.

University Photography: Joseph V. Labolito joseph.labolito@temple.edu
 Betsy Manning betsy.manning@temple.edu

Temple Times Online: Cheryl Afonso cheryl.afonso@temple.edu

Submit news and calendar items, at least two weeks in advance, to Temple Times: www.temple.edu/temple_times/events_form.html.

1601 N. Broad St.
302 University Services Building
Temple ZIP #083-43
Philadelphia, PA 19122
Fax: 215-204-3753
Phone: 215-204-8963



Temple Times is published by the Division of University Communications each Thursday of the academic year.

HRMatters

Human Resources gears up for fall

Faced with the ongoing challenge of meeting the diverse developmental needs of Temple employees, the Human Resources Department has responded with more than 63 different courses offered on Main Campus, the Health Sciences Center and Temple University Center City. When requested, HR representatives also offer programs at Ambler, Fort Washington, Tyler, the School of Podiatric Medicine and Harrisburg.

This year marks the launch of several new programs, some designed for all University employees and others targeted specifically to Temple supervisory and leadership-level staff.

Customer service courses

In the new course "Applying A+ Service Skills: Practice Makes Perfect," participants will simulate real-world situations and put customer service theory into practice.

Another new course, "Directing, Monitoring and Measuring Customer Service for Supervisors," is designed to teach supervisors how to set departmental/unit customer service standards, create quality service initiatives and measure customer satisfaction. Participants will discuss the pros and cons of assessment procedures such as surveys, observation and focus groups, and will leave with new tools for developing service action plans based on S.M.A.R.T. goals.

Career development

In "Moving On Up at Temple University," representatives from HR's compensation, employment and organizational development and training units will demonstrate how to use HR systems and Temple resources to maximize their potential here. Workshop attendees will be introduced to the new features and functions of the iGreentree Web-based software and explore how to submit an application for new positions through the Temple Web site and tips on the interviewing process.

Financial systems certificate program

"Money Matters: Temple University's Financial Systems Certificate Program" is a series of four programs: "Cost Center Processing Overview & FMS on the Web" (required for certificate), "How to

To learn more or to register

To explore Universitywide training resources, employees can visit Human Resources' home page at www.temple.edu/personnel and click on the "University-Wide Training and Development" link. At the top of the page is the "Competency-Based Training and Development Programs" link (<https://atlas.ocis.temple.edu/hr>), which goes directly to HR's Organizational Development & Training online registration system. There, employees may select exactly the programs that will satisfy their developmental needs and can search for a course by competency, date, course title or audience. Department heads should remember that many of HR's seminars can be delivered to individual work units as-is, as well as tailored to meet specific departmental needs. To schedule departmental training programs, contact Marie Amey-Taylor at 215-204-1673 or marie.amey-taylor@temple.edu. For customer-service-specific training, contact Eric Brunner at 215-204-3318 or eric.brunner@temple.edu.

Purchase Goods and Services at Temple," "How to Pay for Goods and Services at Temple" and "Managing a Sponsored Project, or What Do I Do Now That My Proposal Is Funded?" To receive a certificate a participant must attend the required course, plus two of the other courses in this series. Programs will be conducted by members of the finance department.

Supervisory/managerial training program

Process analysis is the systematic review of how an organizational unit or an individual functions and how processes are performed. In "Process Analysis for Supervisors and Department Heads," participants will learn techniques for collecting and analyzing data, as well as investigate ways to use information to develop and implement

plans for increased productivity and resource management.

"How To Hire The Right Person: Competency-Based Behavioral Interviewing" details the process of conducting interviews that ensure that Temple maintains its qualified, competent and diverse staff. The program focuses on interviewing procedures that are designed to guard against discrimination while ensuring that qualified individuals are hired.

In "HR Systems for New and Not-So-New Temple Supervisors," participants will become more familiar with systems such as automated employee attendance records, iGreentree for electronic resume and job tracking, iHiring Manager for electronic job requisitions, the Web-based Performance Development System, the electronic hierarchy system and Employee Self-Service system. Supervisors will leave with a clearer understanding of which HR-related activities they can and should delegate to others and how to monitor and follow up on electronic processes.

Administrative professionals certificate program

This program is designed for new and not-so-new to Temple administrative professionals (administrative assistants, secretaries, clerks and receptionists) who want to enhance their professional skills. Participants will learn how the role of the administrative professional is changing and will brush up on many of the interpersonal and administrative skills required of the Temple administrative professional. To receive a certificate of completion, participants are required to attend six courses (three core courses and three electives) within a two-year period.

Core courses (required): "From Secretary to Administrative Professional: What Has Changed—What Hasn't"; "Write It Right, or Proofreading and Grammar Crash Course"; any customer service seminar. Electives courses: Choose any three additional programs (certificate courses count as two programs).

Human Resources welcomes suggestions for new programs and encourages every employee to get ready ... set ... and register! ♦

Spotlight: Trustee Michael P. Williams

Part of a series introducing the University community to its Board of Trustees

By Hillel J. Hoffmann
hillel.hoffmann@temple.edu



By any measure, Temple trustee Michael P. Williams (B.A., CLA '93) is an extraordinarily successful man.

He's the City of Philadelphia's deputy finance director and director of the Minority Business Enterprise Council.

He's an accomplished attorney and one of the region's most prominent advocates for the rights of gays and lesbians.

The Philadelphia Tribune called him one of Philadelphia's most influential African-American leaders earlier this year, and the *Philadelphia Daily News* named him one of 21 "People to Watch in 2005." And he has the academic credentials to match: He graduated magna cum laude from Temple and was vice president of his class at the University of Pennsylvania School of Law.

Yet Williams' academic career didn't get off to a very good start. You might even say it was disastrous. That experience — overcoming the rockiest of beginnings as a college student, and then even homelessness — shaped his feelings about his alma mater and its role in the community, and still guides his actions as a Temple trustee.

Williams first came to Temple from Compton, Calif., in the fall of 1977, knowing little about the school or Philadelphia other than what he had learned from a brochure and watching Bill Cosby on television.

"When I first got dropped off, I didn't know where I was," Williams said. "Temple and the East Coast were a bit of a shock, from the language to the food."

He struggled to stay afloat, and less than a year later, he sank.

"I just didn't acclimate to college as quickly as I wanted," he said. "I stopped showing up. I dropped out. And then I was homeless. I had trouble finding a job, and I felt that I couldn't ask my family for help. They were struggling financially too."

Williams found his way out of homelessness with the help of an entry-level job at Pennsylvania Hospital. He then moved back to Los Angeles and remade himself as a telecommunications worker before returning to Philadelphia in 1989.

He re-enrolled at Temple in 1991, and he eventually graduated with a bachelor's degree in French studies and a 3.51 GPA.

"The second time around, I got it," Williams said. "I was ready for college, and I was able to appreciate it."

Williams' tortuous undergraduate odyssey has informed his view of recent changes at Temple. He has heard the concerns about the consequences of the University's more rigorous academic and admissions standards, and the claims that Temple might not be serving local minority communities as well as it once did — and he rejects them.

"I don't buy that criticism," Williams said. "I think that Temple

serves the city of Philadelphia, particularly people of color, better than ever. If Temple raises its academic standards, that's a good thing for the community. If folks aren't meeting those standards, there are other options that are viable. The community college partnerships can help: You go to a community college, you hone your skills, and then you go to Temple. That does more to serve the city's residents. It's a disservice to let folks in who aren't ready — like I wasn't ready — and let them drop out! Open enrollment doesn't help folks if they're not going to be able to keep up and compete.

"But that's not the only way that Temple serves local communities," Williams continued. "Temple serves Philadelphia's people of color through school partnerships and public service from its faculty, students and staff. And Temple means economic development. It means jobs and job creation. It means creating a pool of human capital from which the city can benefit, particularly the city's brain trust. Temple is a jewel in this city, and should be treated as such."

Williams' connections with Temple are deep. In addition to being a member of the Board of Trustees (his nomination as a commonwealth trustee by Gov. Ed Rendell was approved in 2003), he's also an adjunct faculty member at The Fox School of Business and Management. And although there are plenty of Temple alumni on the board, none can claim to have been enrolled as undergraduates in both the 1970s and the '90s. That long relationship with the University has given Williams a unique perspective on recent improvements at Temple.

"With all due respect to the Temple University I knew in the 1970s, the Temple of that time felt like a commuter school," Williams said. "It was a campus that didn't have any sort of student life whatsoever. It was dark, and a scary place to walk."

"Now I see a school that has revived student life. I see a well-lit campus. I see great students, and I see them hanging out day and night. I see a new, fancy Student Center. I see more Temple spirit, as well as great academics."

"You can say 'I'm part of the Temple community' with pride and without making any excuses," Williams said. "This is an exciting time." ♦

Civil engineering major receives White Scholarship

Anthony Munoz (right), a senior civil engineering major from Harrisburg, received the 2005 James S. White Scholarship, a \$1,000 gift given annually to returning resident assistants, during a ceremony on Aug. 22. Typically, the award is split between two students, but this year the scholarship committee singled out Munoz for recognition.

Established in 1999 when Temple named a residence hall in honor of former Executive Vice President James White (left), the award is given to students who mirror White's "personal integrity, professional excellence and patient compassion." White currently serves on Temple's Board of Trustees.

"Receiving the scholarship meant more to me than money," said Munoz, who boasts a 3.46 grade-point average. "It made me feel greatly appreciated and gave me even more motivation to work just as hard, if not harder, this year."

Munoz will again serve as an RA at White Hall this year. He said he came to Temple because of its connection to Philadelphia and that his top goal is



to create "a sense of one community between students and the residents of North Philadelphia."

The first member of his family to attend college, Munoz has worked since age 14 to contribute to his family. Though he has a year of school remaining, he intends to work for Gilbane Construction Co. after graduation.

— Ted Boscia

Key administrative posts filled across University

A number of new administrative appointments were announced over the summer. Watch for more information about these new additions to the Temple community and the work they're doing in upcoming issues of the *Temple Times*.

Associate vice president of multicultural affairs

Rhonda Brown was hired to direct the University's new Office of Multicultural Affairs, a new administrative body that will advance one of the University's core missions, the continued growth of Temple as a diverse community of students, scholars, teachers and administrators. The OMCA's agenda will be much broader than the University's Office of Affirmative Action, which has been merged into the OMCA. Reporting to Brown are four OMCA units: a recruitment and retention unit, responsible for attracting and retaining people of color and women at all levels of the institution; a compliance and investigation unit, which will expand the responsibilities of the Office of Affirmative Action; a business relations unit, which will work to increase and improve partnerships with minority- and women-owned businesses; and a student support services unit, responsible for enhancing the education, personal development and quality of life of a diverse student body. Brown comes to Temple after serving as the first director of the Office of Institutional Equity at the University of Notre Dame, where she spearheaded the university's affirmative action and equal opportunity efforts. Brown received a J.D. from American University's Washington College of Law in 1986.

Associate vice president for budget and fiscal affairs

Vanessa Rose, former assistant vice president at Detroit's Wayne State University, was selected to succeed Richard Chant, who first joined the University in 1983. At Wayne State, Rose was responsible for developing the annual budget, evaluating funding needs and identifying funding options relative to that university's strategic needs. Temple's total spending is approximately \$902 million annually and Temple's assets (excluding the physical plant) have grown 143 percent to almost \$500 million over the past 10 years. A recently released report found that Temple's annual direct expenditures generate \$3.1 billion of economic activity in Pennsylvania. In May, Standard & Poor's Ratings Services upgraded its Temple rating to A+; one year ago, Moody's upgraded Temple's long-term underlying debt rating from A2 to A1.

Assistant vice president for alumni relations and executive director of the General Alumni Association

Deborah Fowlkes has succeeded John MacDonald, who retired in the summer of 2004 after a 40-year career with Temple. Fowlkes brings to Temple an accomplished record with her previous employer, Duke University, where she most recently served as director of alumni education and travel and founded Duke's alumni continuing education program. A

Duke alumna, Fowlkes began her higher education career there in 1986 with the office of undergraduate admissions. In her dual roles, Fowlkes describes her primary responsibility as "creating ways to keep Temple's 240,000 alumni connected to the University." She intends to draw from her experience directing alumni education programs at Duke to similarly unite Temple graduates.

Vice provost for faculty affairs

Bonnie S. Brennen, professor and chair of journalism, succeeds Ronald J. Tallarida, who stepped down on July 31 to return to his federally funded research and teaching activities in the pharmacology department. In fall 2004, Brennen joined Temple from the University of Missouri, one of the top journalism programs in the country. Her scholarly work centers on journalism history and cultural studies, and she is a highly recognized and prominent educator and scholar in the field of journalism and mass communications. Brennen brings experience in faculty affairs at the University of Missouri and has already served as a member of the Provost's Advisory Committee on Tenure and Promotion at Temple.

Chief information security officer

Ken Ihrer, a senior-level information security and privacy professional with success in management, design and teaching, is responsible for the design, implementation and testing of all security components of the University's information technology architecture. He is ultimately responsible for Temple's IT security policies, standards and guidelines. Ihrer's previous positions include senior manager with Caremark Rx Inc., national security practice manager with Sprint E-Solutions, network operations center manager/principal analyst for the Dallas Independent School District, and regional technical representative with Unisys Corp.

Director of the Landscape Arboretum of Temple University Ambler

Jenny Rose Carey succeeds arboretum founding director Stephanie Cohen, a Temple Ambler alumna and co-author of *Perennial Gardener's Design Primer* with Nancy Ondra. Also an Ambler alumna, Carey graduated summa cum laude with an associate of science degree in horticulture in 2003. She continued her stay at the Ambler Campus as an adjunct professor in the landscape architecture and horticulture department. Carey brings a background in research of historical Philadelphia gardens and women's roles in the development of gardens and horticultural styles in the early 20th century. Carey plans to undertake improvement projects including new designs for the gardens, irrigation, lighting, signage, tagging and accessibility. She also is responsible for working with academic and administrative units to provide educational programs for the community in addition to supporting the curricula of the department of landscape architecture and horticulture and the use of the arboretum and its facilities across academic disciplines. ♦

Alperson steps in as acting CLA dean; Daly to lead search

Philip Alperson, professor and former chair of philosophy at Temple, has been appointed acting dean of the College of Liberal Arts. He is temporarily filling the post vacated by Susan Herbst, who left Temple this summer to accept a position as provost and executive vice president for academic affairs at the University at Albany, part of the State University of New York system.

"We are grateful to Phil Alperson for stepping forward in this critical year to provide leadership for the College of Liberal Arts," President David Adamany said. "In the year ahead, the college will be developing courses to define its role in the new general education curriculum and expanding Honors programs for outstanding students in the departmental majors."

This week, Provost Ira M.



Alperson

When fully staffed, Daly's search committee will be joined by representatives from Temple's faculty, student body, alumni and administration.

Alperson, a leading scholar of aesthetics and the philosophy of the arts, is best known for his explorations of music, particularly improvisation, creativity and performance. He is the founding director of two Temple centers: the Society of Fellows in the Humanities and the Center for Vietnamese Philosophy, Culture and Society. As chair of

Schwartz announced that John M. Daly, dean of the School of Medicine, will chair the search committee charged with finding a permanent CLA dean.

philosophy, Alperson spearheaded the department's recent hiring of seven new tenure-line faculty members, including Mellon Professor of the Humanities Noël Carroll, Temple's top humanist.

"Temple — and the College of Liberal Arts in particular — have undergone enormous changes in the last several years," said Alperson, who assumed his new post on Aug. 15. "There is a new vitality in the college that builds on existing strengths and promotes new areas of intellectual and academic inquiry. I look forward to helping to continue this momentum over the next year."

During her two years as dean, Herbst created the CLA's first board of visitors and led an aggressive faculty recruitment push, hiring more than 45 new tenure-line faculty members for the college. ♦

Sadeghipour new acting CST dean

By Preston M. Moretz
preston.moretz@temple.edu

College of Engineering Dean Keya Sadeghipour replaced Allen Nicholson as acting dean of the College of Science and Technology effective July 1.

Nicholson, who was named acting dean of CST in January 2004, returned to the chemistry faculty, where he resumed his previous duties as department chair.

"For the past year and a half, Allen Nicholson provided excellent leadership in both the teaching and research enterprises of the College of Science and Technology," President David Adamany said. "On behalf of the college and the University, I want to thank him for his stewardship during this transitional period."

Provost Ira Schwartz added, "When we asked Allen Nicholson to serve as acting dean, it was our intent for him to serve no longer than a year. He answered our call at a critical time in the life of the College of Science and Technology and served for 18 months with unwavering commitment, often at the sacrifice of his own research pro-



Sadeghipour

gram. The University is indebted to his leadership."

Sadeghipour, a member of the mechanical engineering faculty since 1987 and dean of the College of Engineering since 1998, praised the job of his predecessor.

"Dean Nicholson did a wonderful job of keeping the College of Science and Technology moving ahead and meeting the goals set forth by the University," he said.

Sadeghipour is no stranger to CST. He served as acting dean of engineering when engineering was part of CST, before becoming a separate college. He said he hopes that background will help him in guiding CST.

"I have worked very closely with the College of Science and Technology since becoming dean of engineering," Sadeghipour said. "It is my intent during this transition period to a new dean to assist the CST in moving forward. I don't simply want to maintain the status

quo, but to actively support and strengthen all relevant college functions, including student and administrative services, teaching and research activities."

Nicholson, a distinguished biochemist who came to Temple as chair of chemistry from Wayne State University in 2003, said he was grateful for the opportunity to lead the College of Science and Technology.

"I came to Temple University a little over 2 1/2 years ago to be chair of chemistry, and not long after I arrived I was asked by President Adamany and Provost Schwartz to serve as acting dean," Nicholson said. "I had the support of a lot of people in the dean's office, the faculty and my fellow deans in tackling a lot of very important issues within CST."

"It's an exciting time for the college, and I'm happy to have had the opportunity to help out on a number of fronts to move the college forward. It was a very enjoyable challenge," he added.

A national search continues for candidates to serve as dean of CST, Schwartz said. ♦

Noted artist Morrison named Tyler dean

Morrison from page 1

Tyler's strong programs while helping elevate Tyler's prominence through its move into a new state-of-the-art facility for creating, teaching and appreciating art."

A native of Jamaica, Morrison holds B.F.A. and M.F.A. degrees from the School of the Art Institute of Chicago.

Morrison succeeds acting Dean Hester Stinnett, who led Tyler since 2002. She is resuming her role as professor of printmaking in the graphic arts and design department at Tyler.

"For three years, Dean Stinnett has guided Tyler with creative energy and a steady hand," Schwartz said. "We thank Hester for her will-

ingness to serve in an acting role for an extended period, and we know her students will be excited to have her back in the classroom."

The new, \$75 million home for the Tyler School of Art on Main Campus is being designed by award-winning architect Carlos Jimenez of Carlos Jimenez Studio in Houston, designer of some of the country's premier art education facilities and exhibition spaces. The world-class facility, incorporating a variety of art-related spaces including studios, workshops and exhibition galleries, is expected to be completed in 2008. Tyler currently occupies a campus in suburban Elkins Park.

Jimenez, recognized nationally for his designs of urban education-

al facilities, will design Tyler's signature building in a joint venture with H2L2 Architects/Planners, a Philadelphia-based firm specializing in the design of academic buildings.

Tyler School of Art offers the opportunity to pursue study of the arts within small learning communities while also providing the advantages afforded by a large comprehensive research institution. The Tyler curriculum encompasses programs in the fine arts, crafts, design, art history, art education and architecture taught by faculty who are accomplished studio artists and highly respected scholars. Tyler's M.F.A. program is often listed among the top such programs in the United States. ♦



This year's freshman class, which was treated to a barbecue after moving in late last week, is more ethnically diverse than last year's.

Survey lauds Temple's diversity

Princeton Review from page 1

ethnic diversity of Temple's freshman class, a class that also has stronger academic credentials than any other class in our history," President David Adamany said. "The diversity of Temple's student body, as well as the growing diversity of our faculty and staff, is part of what makes this University great. It enriches the Temple experience for all of us, and we're committed to maintaining it."

Last year, about 31 percent of Temple students reported themselves as something other than white. That was more than three times higher than the percentage of students in the rest of Pennsylvania's higher education system, which includes Cheyney University, a historically black institution. Temple has jumped to fifth in the nation on the list of schools granting the most bachelor's degrees to African Americans, and three of the schools ahead of Temple are historically black colleges.

The diversity of Temple's student body is a major drawing card for recruits of all kinds, from prospective students to faculty members.

"I wanted to go to a school with more diversity than a typical small or suburban school," said Peter Chomko, a freshman Honors student from Allentown, Pa., who scored 1510 on his SATs. "When I was at orientation, I met people from all sorts of backgrounds from all over the United States and all over the world. That's one of the things I've been looking forward to at Temple."

More from Princeton Review's 'Best Colleges'

The diversity of Temple's student body isn't the only attractive feature about Temple, according to The Princeton Review's *Best 361 Colleges*.

This year's "Survey Says" entry on Temple praised the University's "great computer facilities," "great library" and "great off-campus food." Students in the Princeton Review's surveys also said that the "campus feels safe" and the "athletic facilities are great."

Temple's academic rating improved compared to last year. According to *Best Colleges*, "Temple students love their school for its ability to integrate 'a good educa-

tion with significant life experiences," and Temple "has earned a 'great scholastic reputation' while prioritizing 'real-life, hands-on experience with internships, co-ops, and experiential learning that prepares you for life beyond college.'"

Best Colleges also highlighted the urban appeal of the Temple campus: "Though the school organizes 'free good food, movies, guest speakers, parties, festivals, and cultural bus trips,' most students choose to make their own fun in surrounding Philadelphia, 'which is easy because we are directly connected to public transportation.'"

— Hillel J. Hoffmann

Temple's diverse student body helped lure philosophy professor Lewis Gordon from Brown University last year.

"I consider Temple to be an excellent institution through which to develop a viable response to the catastrophic decline in the number of racial minorities pursuing graduate degrees," said Gordon, who directs Temple's Institute for the Study of Race and Social Thought.

Last year, Temple created the Office of Multicultural Affairs, an administrative body reporting directly to Adamany. The office's new leader, Rhonda Brown, is charged with attracting and retaining minorities at all levels of the institution. She says that Temple's

work to create a diverse educational community doesn't end with the enrollment of a diverse group of students.

"We have a wonderful freshman class, and it's great to be ranked No. 2 by the Princeton Review, but the task here is always to improve," said Brown, who came to Temple after serving as the first director of the Office of Institutional Equity at the University of Notre Dame.

"For example, we will do a significant disservice to the students we admit to Temple if we don't also strengthen our push to recruit and retain diverse faculty members. It's critical for minority students to be taught and mentored by people who look like they do." ♦

Law School receives \$100K for Chinese judicial program

In support of Temple's Judicial Education Program, which offers short-term educational opportunities to judges in the People's Republic of China, the Alcoa Foundation recently awarded the Beasley School of Law a \$100,000 grant.

The award supplements a \$2.1 million grant from the U.S. Department of State for ongoing expansion of the Law School's innovative rule of law projects in China.

The two-year grant will assist Temple and the National Judicial Training College of the Supreme People's Court of China with their partnership that offers training and support for judges who are actively involved in the development of China's legal system.

The program consists of three months of education on the U.S. legal system at the National Judicial Training College in Beijing followed by a concentrated four-week program in the United States, providing judges in China with a comparative context for their work in the legal system.

The Judicial Education Program is one of several groundbreaking projects that Temple

leads in China.

For the past seven years, the Beasley School of Law's China rule of law project, which offers a master of laws program, non-degree judicial training for judges and prosecutors, legislative drafting projects and scholarly roundtables, has been helping China develop a fair and credible legal system, a crucial step in the maturation of the country's market economy.

The master of laws program, operated in cooperation with Tsinghua University, was the first foreign law-degree-granting program in the history of China, and is viewed as the most comprehensive foreign law degree program offered in the nation.

Courses offered range from U.S. constitutional law to e-commerce law.

As of today, 141 Chinese legal professionals have graduated from the program, including 45 judges, 23 prosecutors, 27 government officials, 14 law professors and eight non-governmental organization legal counsels.

Also, 25 Tibetans and other minority lawyers have graduated or are currently students. ♦

Announcement

Ex-assistant DA named director of trial advocacy at Law School

Jennifer Wasilisin
jenniferw@toplin.com

The Beasley School of Law has announced the appointment of Maureen McCartney as director of trial advocacy programs and associate professor.

In this role, McCartney, who previously served as assistant district attorney to Lynne Abraham, district attorney of Philadelphia, will be responsible for administering, supervising and teaching in all levels of the Law School's nationally recognized trial advocacy programs. She will assist in hiring, training, supervising and counseling approximately 50 adjunct instructors and in developing and designing the trial advocacy curriculum. She will also coordinate teaching and advocacy workshops, serve as a member of the coaching team of the Law School's award-winning mock trial championship program and advise and counsel students.

"Maureen McCartney is a gifted trial lawyer, an inspiring mentor to young attorneys and a committed teacher. We are thrilled that she has joined our community," said Edward D. Ohlbaum, professor of law and director of trial advocacy and clinical legal education, with whom McCartney will be working.

A resident of the Chestnut Hill section of Philadelphia, McCartney also was a staff attorney for



McCartney

the Center for Death Penalty Litigation in Durham, N.C., representing capitol sentenced defendants in state and federal post-conviction proceedings, and supervised the Defender Association—University of Pennsylvania Law School criminal law clinical program.

McCartney earned her undergraduate degree (B.S. 1986) from West Chester University and her law degree (J.D. 1990) from Vermont Law School. She is a member of the Pennsylvania and North Carolina Bar Associations, as well as the U.S. District Court of the Eastern District of Pennsylvania and the U.S. District Court of the Eastern District of North Carolina. ♦

Paulos makes Broadway debut

Mathematics professor John Allen Paulos had his name in lights along New York's Broadway on Aug. 7, as an ABC News marquee touted his monthly online commentary, "Who's Counting." His August column was titled "Why Medical Studies Are Often Wrong," and the scroll across the marquee read "John Allen Paulos Explains How Bad Math Haunts Health Research."

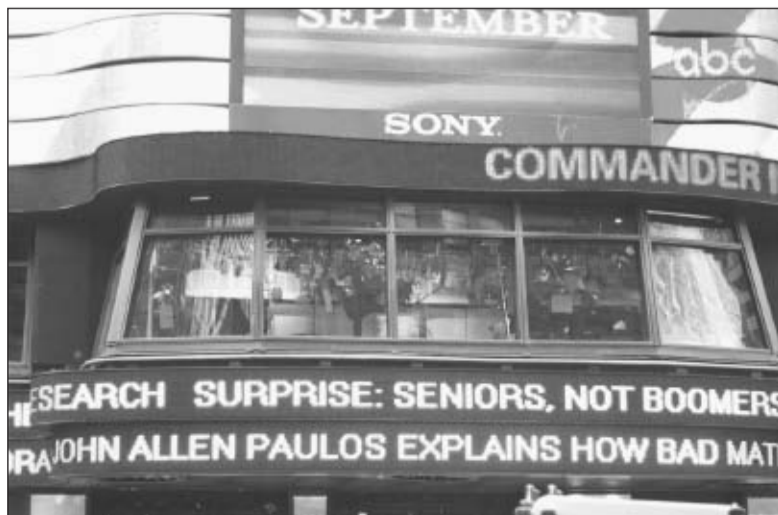


Photo by Stan Horwitz

In the News

Aug. 23: *The Philadelphia Inquirer*. Will the state pay raise legislators voted for themselves be overturned? Not if history is any teacher. **David Kairys**, a professor at the Beasley School of Law, believes there is some reason to believe that the state Supreme Court will support a challenge.

Aug. 22: *The National Law Journal*. Supreme Court nominee John Roberts is, in many ways, the opposite of retiring justice Sandra Day O'Connor. **Craig Green**, an assistant professor at the Beasley School of Law, wrote in an essay that O'Connor often struck a tone of compromise that matched the national mood, but Roberts' background does not suggest he will do the same.

Aug. 22: *Indianapolis Star*. Smoking bans are becoming more popular on college and university campuses. The ban at Purdue University

allows non-smokers to report their puffing colleagues. "Certainly that is more stringent than some universities," said **Michael McNeil**, Temple Health Empowerment Office coordinator and American College Health Association member.

Aug. 22: *Minneapolis Star Tribune*. Teaching with humor can help kids learn and handle life better. "Kids are not empty vessels to be filled," said **Katherine Hirsh-Pasek**, psychology professor and the author of "Einstein Never Used Flash Cards: How Our Children REALLY Learn — and Why They Need to Play More and Memorize Less." Creative teaching will help children learn to put facts together in creative ways; that bodes well for their futures in a competitive economy as well as for satisfying lives, she said.

For more Temple news mentions, visit in the News online at www.temple.edu/news_media/in_news.html.

Awards & Achievements

Oscar Arevalo and **Amit Chatopadhyay**, assistant professors at the School of Dentistry's department of dental informatics, recently received a \$20,000 grant from the Delta Dental Plan of California. This award will be used to increase the hours of operation and number of patient visits at Temple's school-based dental clinic in the Roberto Clemente Middle School in Philadelphia. For more information about the clinic, go to www.temple.edu/news_media/hkg0307_20.html.

Ausim Azizi, professor and chair of neurology, director of the neurology residency program and medical director of the neurological intensive care unit at the School of Medicine and Temple University Hospital, has been named president elect of the Philadelphia Neurological Society.

Stephen Permut, assistant dean of academic affiliations and chair of family and community medicine at the School of Medicine, has been elected to several positions at the American Medical Association: chair of the southeastern delegation, vice chair of the Council on Legislation and the Board of Trustees' Task

Force on Patient Safety.

Phyllis Taxin, director of accounting operations in the Controller's Office, has been named treasurer of Women In Transition, a nonprofit agency devoted to serving women endangered by domestic violence and substance abuse, by its board of directors.

CIO magazine selected **Temple** as one of 100 organizations that "truly exemplify a bold enterprise" in its 2005 CIO 100 Awards.

Temple Jobs

Sherryta Freeman has been named assistant athletic director for compliance. Freeman comes to Temple after serving as assistant athletic director of compliance at Dartmouth College since January 2004. At Temple, Freeman will oversee all aspects of the athletic department's compliance efforts for its 24 sports and more than 500 student-athletes with conference and NCAA rules and regulations. She will work to educate coaches, administrators and student-athletes about new rules and regulations, as well as assist with processing NCAA and conference waivers on behalf of student-athletes.

Research Notes

Presentations

Vincent Armenti, professor of surgery at the School of Medicine and interim director of the abdominal organ transplant program at Temple University Hospital, recently presented "Pregnancy Registry: Recipient Specific Issues" at the American Transplant Congress meeting in Seattle.

Assistant professor in the Fox School of Business and Management's MIS department **David Schuff** and MIS doctoral candidate **Zaheeruddin Asif** presented their paper, "A Process-Based Framework for Assessing IT Value," Aug. 11-14 at the Americas Conference on Information Systems in Omaha, Neb.

Schuff also co-chaired a mini-track with Ozgur Turetken, assistant professor in the MIS department, titled "Information Visualization and Decision Support," at the conference.

Jack VanDerhei, a Fox School of Business and Management risk, management and healthcare management professor, recently made a presentation, "Automatic Enrollment for 401(k) Plans," to the 2005 US-UK Dialogue on Pensions on July 20. On July 25, VanDerhei delivered another presentation, "Want to Bet on Your Chance of Having Adequate Retirement Income?" to the American Society of Pension Professionals & Actuaries Summer Conference and the Western Pension & Benefits Conference.

Undergrad research fund receives \$20K gift



Antonio Giordano, director of Temple's Sbarro Institute for Cancer Research and Molecular Medicine, presents Provost Ira Schwartz with a \$20,000 gift earmarked for the University's Undergraduate Research Incentive Fund. The URIF, created by the Provost's Office in January, is meant to familiarize undergradu-

ates with research by subsidizing deserving student projects. Giordano's gift was awarded on behalf of the Sbarro Health Research Organization, an independent charitable organization established in 1993 by Giordano and Mario Sbarro, owner of the Sbarro's restaurant chain.

— Ted Boscia

Find the right shoes at back-to-school time

By Eryn Jelesiewicz
eryn.dobeck@temple.edu

It's time for back-to-school shopping, and that means new shoes! Should you succumb to the style demands of your children? Or should you insist on more practical shoes?

According to John Walter, a podiatrist at the School of Podiatric Medicine, because children's feet continue to grow and develop into the teen years, good, supportive shoes are critical for foot health. He suggests that parents look for sturdy shoes with good heel strength and support that will withstand the wear and tear children typically inflict.

"A lot of the sneakers out now are really quite good as long as they fit well," he said. "The only problem is that kids don't like to tie them for style's sake. But for support and to keep dirt and foreign objects from entering the shoe, children's sneakers and shoes should be tied. This will also help prevent kids from coming out of their shoes and spraining an ankle."

Walter offered the following tips for parents when shopping for children's shoes:

- Make sure the shoe fits properly. There should be a thumb's width between the end of the big toe and the end of the shoe.
- Because of growth spurts, children's shoes should be checked every four to six months for proper fit. You can tell your child has outgrown a shoe when it's harder to get on.
- The suggestion to buy shoes in the afternoon or evening, when the feet have swollen, applies to children as well as adults.
- The shoe has to be the proper length and width. You can get greater width with greater length. Also, shoes can be stretched by a

"A lot of the sneakers out now are really quite good as long as they fit well. The only problem is that kids don't like to tie them for style's sake."

John Walter
Podiatrist at the School of Podiatric Medicine

shoe tree or shoe maker.

- A good supportive sock, such as cotton, is important for a bit of cushion and moisture absorption.
- In addition, the American Podiatric Medicine Association recommends that you "limit the time children wear platform or heeled shoes and alternate with good quality sneakers or flat shoes."

If needed for extra support, inexpensive foot insoles or inserts, available at drugstores, grocery stores and athletic stores, can be added to any children's shoe.

When over-the-counter shoe inserts don't suffice, however, children's feet should be evaluated by a specialist. Foot problems, such as "toeing in" or "toeing out," or walking on the tiptoes, could indicate a more serious condition that might not be seen as significant if you don't get to the right doctor. Podiatrists can identify such problems and design custom orthotics, or shoe inserts. Other remedies include braces, casts and special shoes.

Children's foot health has long-term implications.

"Often, the painful knee and hip problems we see in adults have developed over several decades of poor foot and postural mechanics that were never addressed with the proper shoes or orthotics," Walter said. ♦

Less-invasive surgery aids children with scoliosis

By Jennifer Kohler
jkohler@temple.edu

According to a study published recently in the *Journal of Pediatric Surgery*, children and adolescents suffering from scoliosis can get the same benefits, with fewer complications, from minimally invasive rather than open surgical correction.

"Although thoracoscopic [video-assisted] anterior instrumentation and spinal fusion is technically more challenging than open surgery and has a definite learning curve, we have shown that equal results can be obtained from this minimally invasive approach," said Harsh Grewal, associate professor of surgery and pediatrics at the School of Medicine and Temple University Children's Medical Center.

Both procedures provide increased spinal flexibility and a more predictable correction of the deformed spine. But the minimally invasive procedure results in less pain, smaller incisions and faster recovery.

For the study, "A Prospective Comparison of Thoracoscopic vs. Open Anterior Instrumentation and Spinal Fusion for Idiopathic Thoracic Scoliosis in Children," Grewal collaborated with researchers from Shriners Hospital for Children and Temple University Children's Medical Center. ♦

Regular library hours resume

Paley Library will be open from 9 a.m. until 5 p.m. Saturday, Sept. 3, and closed Sept. 4-5 for Labor Day. Regular fall semester hours will resume Tuesday, Sept. 6, and remain in effect until Dec. 4, with the exception of fall break, Nov. 23-27. Beginning Dec. 5, Paley will be open 24 hours per day through the end of fall finals on Dec. 17.

- Mon.-Thu.: 8 a.m.-midnight
- Fri.: 8 a.m.-8 p.m.
- Sat.: 9 a.m.-7 p.m.
- Sun.: noon-midnight

Students are now allowed entrance weekdays as soon as the security guards take up their positions in Paley and Tuttleman, up to an hour before opening.

For hours of other Temple libraries, including departmental and branch libraries, visit <http://library.temple.edu>. ♦

Correction

In the *Temple Times*' Aug. 25, 2005, issue, the story "Freshmen in a class all their own" misstated the increase in average SAT score. The article should read: "The average SAT score of new students at Temple has increased 62 points in five years, and the average high school GPA has gone up 2 1/2 points in just two years." ♦

CALENDAR

Events Sept. 1 to Sept. 7

All events free unless otherwise noted. For the most up-to-date listings, visit calendar.temple.edu.

THURSDAY, Sept. 1

Deadline to register: Foot and Ankle Institute Seminar and Alumni Reunion

Seminar for faculty and alumni reunion take place Sept. 16-17, 7 a.m.-5 p.m. Clarion Hotel and Convention Center, Cherry Hill, N.J. Sponsored by the School of Podiatric Medicine and the Foot & Ankle Institute. To register or for more information, call Angel Haldeman at 215-625-5361.

Flapjack Flip

10 a.m.-1 p.m. Bell Tower. Students are welcomed to the Temple neighborhood with a pancake breakfast, served with sausage, bacon and special toppings. Sponsored by Student Activities. For more information, contact Student Activities at 215-204-7131, www.temple.edu/sac, or stop by the Student Center, room 219M.

Game Shows

8-9:15 p.m.: "We Can Make You Laugh." Student Center, room 217. 9:30-11 p.m.: "Elements of Fear." Student Center annex, The Underground. Sponsored by Student Activities. For more information, contact Student Activities at 215-204-7131, www.temple.edu/sac, or stop by the Student Center, room 219M.

FRIDAY, Sept. 2

Field Hockey vs. Albany

3 p.m. Geasey Field.

"Dissent in America" Teach-In

3:40-5 p.m. Anderson Hall, 12th floor, CLA lounge. History majors James Robin-

This Week's Scores

Field hockey

Aug. 27: Temple 5, Lehigh 1
Aug. 28: Lafayette 2, Temple 1

Women's soccer

Aug. 26: Rutgers 6, Temple 0

Women's volleyball

Aug. 26: Temple 3, Lehigh 0
Aug. 27: Temple 3, Towson 1
Aug. 27: Temple 3, Rutgers 0

son and Julia Foley on "Sweatshops in the U.S.A.?" For more information, contact Ralph Young at ralph.young@temple.edu.

Block Party/Carnival

4-8 p.m. Liacouras Walk. An afternoon for the entire Temple community featuring food by Sodexo, giveaways, a picture booth and music spun by DJ Milmatic of 100.3 The Beat. Sponsored by Main Campus Program Board and Sodexo. For more information, contact Student Activities at 215-204-7131, www.temple.edu/sac, or stop by Student Center, room 219M.

Dance Party

10 p.m. McGonigle Hall. Dance Party with DJ Flow from Power 99. \$15; \$10 w/Temple student ID. Sponsored by Main Campus Program Board. For more information, contact Student Activities at 215-204-7131, www.temple.edu/sac, or stop by Student Center, room 219M.

SATURDAY, Sept. 3

Philabundance Share the Harvest Drive

10 a.m.-noon. Temple Ambler has partnered with Philabundance to provide a drop-off point for the Share the Harvest program. Area farmers and home gardeners may bring their surplus vegetables to the Temple

Take a tour of the murals of Philadelphia



Photo by Betsy Manning

The Office of Student Activities hosts many events throughout the academic year, from educational to healthy to relaxing. This Saturday, Sept. 3, Student Activities has organized two walking tours

of the murals that beautify Philadelphia from Center City to North Philly, such as the tribute to Grover Washington Jr. at Broad and Diamond streets by Temple's campus.

Ambler visitors' parking lot on Meeting-house Road. For more information on Temple University Ambler Share the Harvest drop-off site, call 215-283-1290. For more information on Philabundance and the Share the Harvest program, call 215-339-0900 or 856-665-0707 or visit the Philabundance Web site at www.philabundance.org.

to use the MSRC's free tutoring service, which begins fall hours today. Visit www.temple.edu/msrc for more information, or contact Mona Zaoudeh at 215-204-8466.

Men's Soccer vs. Penn

3:30 p.m. Ambler Field.

WEDNESDAY, Sept. 7

IBC locker sale

Visit www.temple.edu/recsvcs/ibc or call 215-204-1267 for hours, membership and information about the Recreation Services facility.

Information Session: Gilman Scholarship

Noon. Tuttleman Learning Center, room 200. The Gilman Scholarship is an undergraduate scholarship for studying abroad. For more information, contact International Programs at study.abroad@temple.edu or 215-204-0720, or visit www.temple.edu/studyabroad.

Innovation & Entrepreneurship Institute Open House

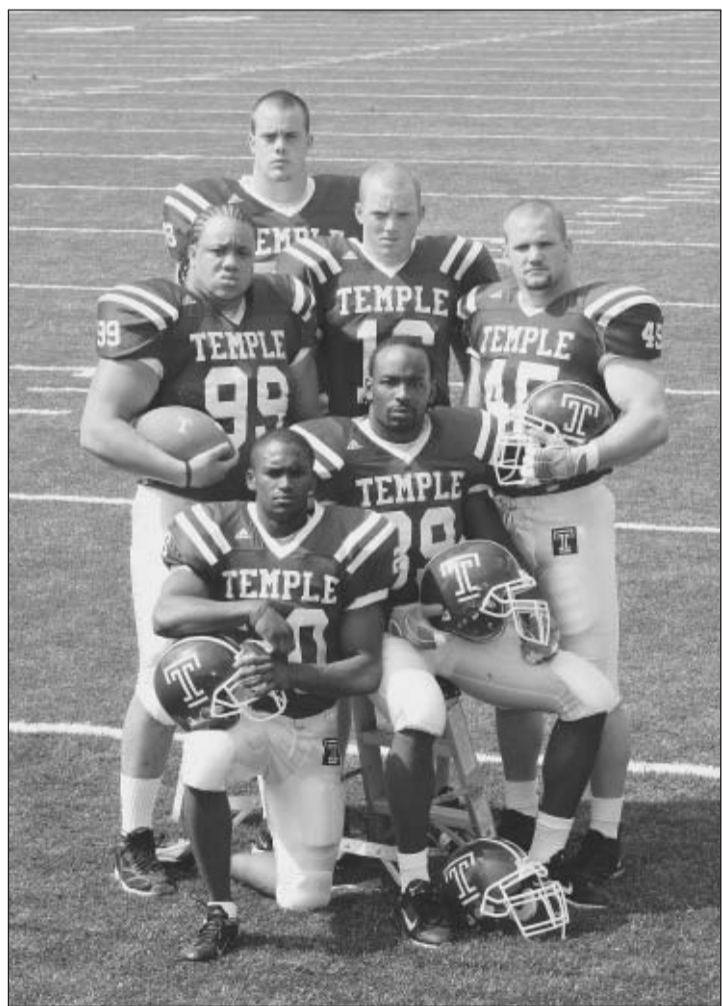
4:40-6:30 p.m. Speakman Hall, room 201. Learn how to take part in the IEI's Business Innovation Competition, meet IEI staff and representatives of student clubs, and learn about upcoming IEI conferences and workshops. The deadline for the first stage of the Business Innovation Competition, the Innovative Idea Competition, is Sept. 30. Students, faculty, staff and alumni from all Temple schools and colleges are invited to participate. For more information, visit <http://sbm.temple.edu/iei>, or contact Michelle Eisenberg at meisenbe@temple.edu.

List your events

If you would like your University-sponsored event included in the calendar, fill out the online events submission form at www.temple.edu/temple_times/events_form.html.

All submissions must be received at least two weeks prior to the event.

Owls kick off season Sept. 1



Temple football's season opens at Arizona State on Thursday, Sept. 1, at 10 p.m. The game will be broadcast on Fox Sports Net Arizona and Philadelphia's "The Big Talker" 1210 AM WPHT.

Temple's home opener will be Sept. 17 at 1 p.m. against Toledo at Lincoln Financial Field in South Philadelphia. The game against the Rockets will also be

the Owls' first contest against a Mid-American Conference opponent as a MAC affiliate member. For tickets, including Wild Cherry student passes (\$50 gets students guaranteed free access to lower-level seating at all Temple home football, men's basketball and women's basketball games), visit the Liacouras Center box office, call 215-204-5040 or e-mail klyko@temple.edu.

Mural Arts Tour: North Philadelphia

11 a.m. Meet in front of the Student Center. Experience North Philadelphia through the eyes of the city's phenomenal mural artists. Space is limited; register at Student Center, room 219M.

Mural Arts Tour: Center City

1 p.m. Meet in front of the Student Center. Experience Center City through the eyes of the city's phenomenal mural artists. Space is limited; register at Student Center, room 219M.

SUNDAY, Sept. 4

Field Hockey vs. Michigan

Noon. Geasey Field.

MONDAY, Sept. 5

Official University holiday.

TUESDAY, Sept. 6

Deadline to register: Time Out Respite Program Fall Training

The 10-hour training takes place Sept. 9, 3-6 p.m., and Sept. 10, 9 a.m.-4 p.m. at University Services Building, room 405. Through Time Out, a home-based respite program, students provide caring companionship and supervision to the frail elderly for at least two hours per visit. Students gain valuable experience in geriatrics. Activities may include meal preparation, taking walks, and planning activities to reduce the isolation of the elderly and provide mental stimulation for them. Students earn \$7 per hour and have flexible schedules. Sponsored by the Center for Intergenerational Learning. To register or for more information, contact Susan G. Smith at 215-204-6540, susan@temple.edu or USB room 206.

IBC hours resume for fall; locker upgrades available

Visit www.temple.edu/recsvcs/ibc or call 215-204-1267 for hours, membership and information about the Recreation Services facility.

Math & Science Resource Center (MSRC) fall hours begin

8:30 a.m. Curtis Hall, rooms 17 and 18. All students enrolled in core-level math, science and statistics courses are encouraged

This Week in Temple History

Sept. 5, 1991

Human Resources Development, a division of Personnel Services, announced that it would offer 25 free programs to employees for "self-enhancement." Today, organizational development & training, part of Human Resources, offers more than 60 scheduled courses throughout the semester, in addition to customized departmental training programs, consultation and counseling for individuals and departments, and a resource library of training and improvement books, videos and CDs.

MOVE-IN DAYS 2005

Late-August scenes, from families and goodbyes to unpacking and introductions.

