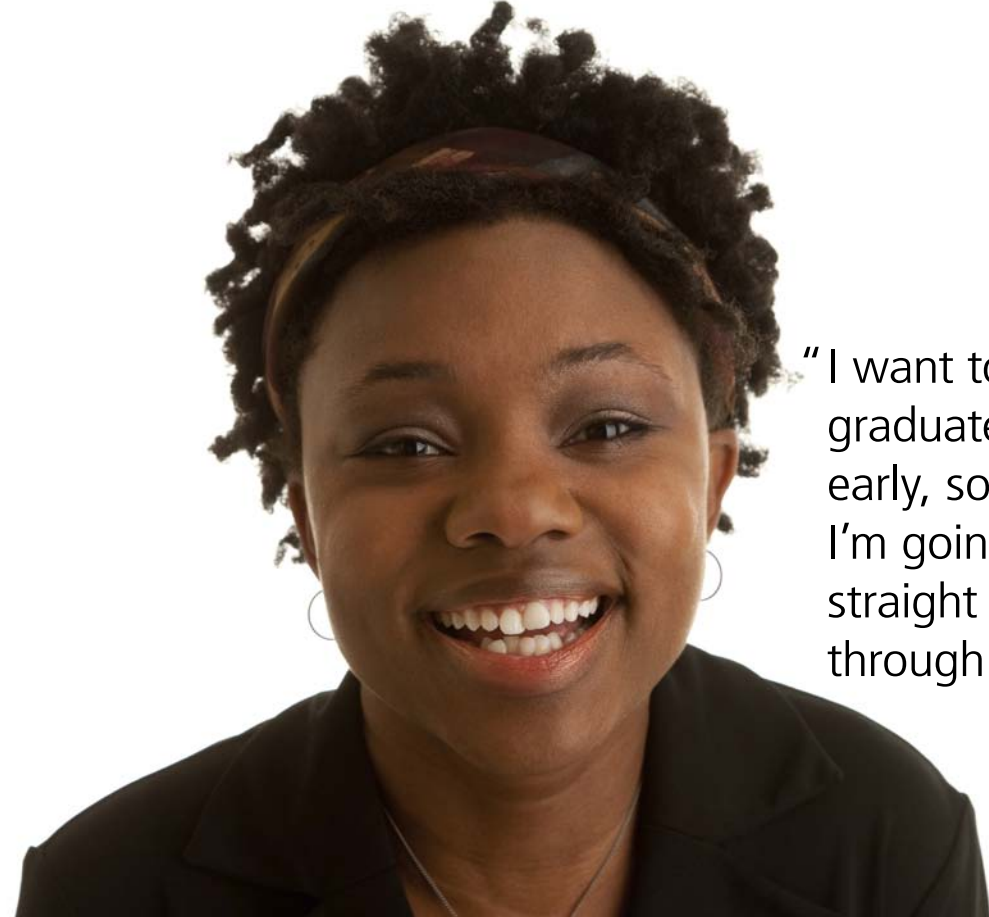


There are lots of reasons to attend Temple Summer Sessions. You may want to spend uninterrupted time on a difficult course. You can lighten your load next semester by getting some required courses out of the way. If you plan to graduate early, you may want to move straight through. Consider Temple University. With six campuses throughout the Philadelphia area and Harrisburg, and over 141 fields of study to choose from, an on-campus or online summer class at Temple could be one of the most productive things you do all summer long.

Visit our web site for full course offerings, transcript requirements, applications and everything else you need to get started. www.temple.edu/summer



"I want to graduate early, so I'm going straight through."

There are lots of reasons to attend Temple this summer. What's yours?



For more information, contact:

Office of Summer Programs
1301 Cecil B. Moore Avenue
665 Ritter Annex Building
Philadelphia, PA 19122
phone: 215-204-2712
fax: 215-204-2666
summer@temple.edu
www.temple.edu/summer



Distance Learning and Summer Programs
1301 Cecil B. Moore Avenue
665 Ritter Annex Building
Philadelphia, PA 19122

Non-Profit Organization
U.S. Postage PAID
Philadelphia, PA
Permit #1044

Why Temple Summer Sessions?

www.temple.edu/summer



"I can take courses from over 141 fields on six campuses or online!"



2012 Summer Sessions Schedule

SUMMER SESSION I

Registration begins:
Wednesday, March 21

Classes held:
Monday, May 21–Monday, July 2

SUMMER SESSION II

Registration begins:
Wednesday, March 21

Classes held:
Monday, July 9–Saturday, August 18

Temple Campuses

Temple offers courses on six different campuses throughout the Philadelphia area and Harrisburg. With day, evening and online classes, you'll find it's easy to continue your studies whenever—and wherever—you choose over the summer.



“There are so many courses to choose from, I’m taking two.”

Main Campus

1810 Liacouras Walk, Room 101
Philadelphia, PA 19122
phone: 215-204-2500
fax: 215-204-2516
cstudies@temple.edu
www.temple.edu/arc

Find the broadest selection of courses here, along with sports and performing arts at The Liacouras Center, state-of-the-art resources at the Tuttleman Learning Center, and the largest technology center in the country at our TECH Center.

Temple University Center City

1515 Market Street
Philadelphia, PA 19102
phone: 215-204-4358
fax: 215-204-5813
tucc@temple.edu
www.temple.edu/tucc

Perfect for students who live or work downtown, our Center City campus features a solid selection of business and liberal arts courses, most scheduled conveniently in the evening.

Temple University Ambler

580 Meetinghouse Road
Ambler, PA 19002
phone: 267-468-8000
fax: 267-468-8110
ambler@temple.edu
www.ambler.temple.edu

Choose from over 200 day and evening classes—plus non-credit courses and summer camps—at our convenient suburban campus, minutes from Route 309 and the Fort Washington interchange of the Pennsylvania Turnpike.

Temple University Fort Washington

425 Commerce Drive
Fort Washington, PA 19034
phone: 267-468-8500
fax: 267-468-8506
tufw@temple.edu
www.tufw.temple.edu

Widely known for our graduate programs in business, education and pharmaceutical quality assurance/regulatory affairs, the Fort Washington campus is convenient to the Pennsylvania Turnpike.

Temple University Harrisburg

234 Strawberry Square
Harrisburg, PA 17101
phone: 717-232-6400
fax: 717-221-1634
tuh@temple.edu
www.temple.edu/harrisburg

Our Harrisburg campus, set in the heart of the state capital, offers a great selection of courses for those living away from Philadelphia for the summer.

College of Health Professions and Social Work

Jones Hall, 3rd Floor
3307 North Broad Street
Philadelphia, PA 19140
College of Health Professions
phone: 215-707-4800
fax: 215-707-7819
chp@temple.edu
www.temple.edu/chpsw

Summer courses in the premedical field are held at this campus, home to Temple University Hospital, Temple University Children’s Medical Center, the schools of Medicine, Dentistry and Pharmacy, and the College of Health Professions and Social Work.

Online Learning: Go to www.temple.edu/oll to view our online course listings.

Financial Information

All billing is conducted electronically. Students receive e-mail messages notifying them when bills are available on TUpay, the University’s billing and payment system. Payment is due within 10 business days of e-bill issuance. Non-degree (non-matriculated) students, including visiting students, will receive a Temple e-mail account after registration.

Tuition per Credit

Undergraduate	Pa. Resident	Non-resident
Part-time	\$502–\$783	\$813–\$1,054
Graduate	Pa. Resident	Non-resident
Part-time	\$687–\$1,000	\$961–\$1,287

Detailed information about each school and college tuition rates and fees are available at: <http://www.temple.edu/cashops/about/tuitionrates.htm>

Fees

In addition to tuition, summer students are assessed the following fees for each session:

University Services Fee	1 to 4 credits: \$66	5 to 8 credits: \$113	9 or more credits: \$148
Returned Check or e-Check	\$25		
Official Transcript	\$8.25		
Late Registration	\$100		
Late Payment Fee	\$60		

Note: Students who withdraw from a Session I course after June 4th or from a Session II course after July 20th are responsible for full payment of tuition and fees for classes withdrawn.

VISITING STUDENTS

Don’t wait! You’ll need paperwork and signatures from your home school, so get busy now. Go to www.temple.edu/summer to download your forms.

