

Temple University Graduate Living



A community of thinkers, doers, learners, and leaders.



TEMPE UNIVERSITY®
Student Affairs

University Housing and
Residential Life





Letter from Assistant Director:

On behalf of the University Housing and Residential Life staff, I welcome you to campus life. Our staff in Graduate Housing works hard to develop a supportive living environment that promotes academic success and personal growth.

Housing options for graduate and professional students include the Podiatric Student Residence Complex at Eighth and Cherry Streets on the campus of the School of Podiatric Medicine and the Triangle Complex on Broad and Norris Streets on the Main Campus.

Besides the easy application process, there are many other benefits to on-campus Graduate Housing. They include:

- Residences that offer an environment well suited for a busy schedule. All units offer single occupancy or a private bedroom. Additionally, family housing units are available on a limited basis.
- A choice between a 10-month or 12-month Housing assignment. (See summer housing Intention Section pg 7)
- A community environment where opportunities to study and socialize together are promoted.
- Convenient locations—the **Podiatric Student Residence Complex** is located adjacent to the School of Podiatric Medicine and convenient to locations in vibrant Center City Philadelphia. The **Triangle Complex** is located right on Temple's Main Campus where access to campus facilities and exciting venues are a short walk away.
- Cable, telephone and Internet access are available in each apartment unit.

I hope you will seriously consider joining our residence community at Temple University.

Sincerely,

A handwritten signature in cursive script that reads "Sean P. Killion".

Sean P. Killion M.B.A.

Assistant Director for Assignments & Billing



Graduate Housing offers a convenient living environment for graduate and professional students of Temple University. Our facilities offer a well-rounded, multi-cultural environment, with professional and social programming to meet the needs and interests of our graduate and professional residents.

INFORMATION FOR NEWLY ADMITTED GRADUATE STUDENTS

At Temple University, the Graduate Admissions process is decentralized and handled by each individual school or college for the Main Campus, Health Sciences Campus, and the School of Podiatric Medicine. Students are responsible for making initial contact with the Office of University Housing and Residential Life when requesting housing information. This can be done in person, by telephone, fax, or e-mail.

Students should provide University Housing and Residential Life with the full name, TU ID number, permanent address, telephone, and e-mail address. In order to receive a Graduate Housing packet, a **student must first be officially admitted to the University**. All applicants are required to pay a \$250 Housing Deposit. Housing Deposits are paid directly to the University's Bursar's Office, or online through MyHousing using the Graduate Deposit Form.

Book Your Housing Early

Unfortunately, due to the demand for housing and the number of bed spaces that typically become available each year, University Housing cannot guarantee that housing will be available for every applicant.

INFORMATION FOR RETURNING GRADUATE STUDENTS

During the Spring semester, current students residing in University housing have the opportunity to participate in a Housing Selection Process to return for the next academic year. Eligibility to participate in this process is based on:

- **Good financial standing with the University**
- **Paying the annual Housing Deposit to the University**
- **Being a resident within University housing during Spring semester**

Residents who meet the eligibility requirements will participate in a Housing Selection Process that allows them to select an apartment and roommate(s) where applicable. Residents will receive notice about the specifics of each year's Housing Selection Process prior to selection.

Students who are currently enrolled at Temple University and do not live in University housing are permitted to request a space in University housing after current on-campus residents have selected their housing. New students will use the Student Web Self-Assign (SWSA) system to book their housing in available units.

STAFFING, SECURITY, AND AMENITIES

Several different individuals make up the STAFFING of each University Housing facility. The Residential Life staff that manage the daily operations of our graduate facilities include one professional Resident Director (RD), who supervises the Graduate Resident Assistants (GRA) that reside at each facility. GRA's are student staff members who have been carefully selected and trained to assist students.

Residential Life operates an office at both the Triangle Complex and the Podiatric Student Residence Complex (PSRC). Residents are offered a variety of social, cultural, and academic programs throughout the year. Additionally, Residential Life and Maintenance Staff are on-call 24 hours a day to respond to emergency situations. Our facilities offer several SECURITY features that support a safe living environment, including security screens (on first floor units), security cameras, and uniformed security officers/ Temple Campus Police.

Each of our graduate facilities offers residents AMENITIES. The location of our facilities provides residents with easy access to Temple's academic buildings and libraries. Apartments at PRSC and Triangle House are partially furnished, and residents of Triangle Apartments have the flexibility of requesting either a partial furnished or unfurnished apartment. Both facilities offer community space for residents to socialize and plan events. On-site laundry facilities are also available. Electric, heat, water utilities, and cable TV are a part of the room rate.





GET CONNECTED

Telephone and high-speed internet access are offered as amenities to residential students who live in university-owned facilities. Every bedroom on campus has one telephone jack for each resident. Students must provide their own true touch-tone telephone, not a pulse telephone. Cordless telephones are not recommended.

Using the university telephone service, students can:

- Receive incoming calls
- Make free five-digit internal campus calls
- Make emergency 911 calls
- Use a prepaid calling card to make local, toll free, suburban, long distance, and international calls

Temple strongly recommends that students bring their own true touch-tone telephone and plug it into the jack. Even if you primarily plan to use a cell phone, cellular phone signals in the residence halls are not always strong and service is not always reliable. In the event of an emergency, you can use your landline phone to call 9-9-1-1. By doing this, you have the added advantage of having your location automatically passed along to the 911 police dispatcher, which is not the case when using a cell phone.

Voicemail is provided to all residential students. To obtain voice mail, log in to the getconnected.temple.edu website and click on the box indicating voice mail is desired. You will receive a confirmation e-mail acknowledging your request. This confirmation message includes instructions on how to initialize your voice mail as well as a temporary password you will need for this process.

Note: The university does not publish a telephone directory. You do have the option to include your telephone number on Temple University's Cherry & White Pages web site. For details, log in to tuportal.temple.edu and click on Cherry & White Update link.

Also, you can choose to be listed with the Temple University switchboard. By doing this, operators will give out your phone number if requested. To get listed log in to the getconnected.temple.edu web site and click on the option to list your number. Note that Temple operators will only give out your number if you sign up for this option.

The background of the page is a photograph of a decorative iron gate. In the center of the gate is a large, octagonal seal of Temple University. The seal features a central image of a classical building with columns, surrounded by the text "TEMPLE UNIVERSITY" at the top and "PHILADELPHIA" at the bottom. The gate itself has intricate scrollwork and is set against a backdrop of green trees and a stone building.

GRADUATE HOUSING SELECTION PROCESS

Room Retention Process for Returning Graduate Students

(select the same room)

Graduate students will use the Room Retention function in Student Web Self-Assign to retain their current room booking for the next academic year in addition to adding a new meal plan booking for the next academic year. Students who have a current room assignment in housing will be extended this opportunity during the Graduate Housing Selection Process.

General Room Selection for New and Returning Graduate Students

Whether you are a returning graduate student looking for new accommodations in the graduate housing inventory or an incoming graduate student requesting housing accommodations on campus, students will have the opportunity to search for available rooms during the General Room Selection Process for graduate students.

Once your housing deposit has been submitted, access the Student Web Self-Assign (SWSA) system to book fall and spring housing assignments, add roommates, and select meal plans.

The Housing Selection Process is available on a first-come, first-served basis. The earlier you submit a deposit, the better your chances are to receive your preferred accommodations. Although demand is great and no guarantees can be made, students who submit the deposit by the dates mentioned generally receive housing accommodations.

As space becomes available, all other students will be offered housing after on-time groups have booked their assignments. If you submit a deposit but are not offered housing, your housing deposit will be refunded or applied to your University account.

THE HOUSING SELECTION PROCESS FOR GRADUATE STUDENTS IS A SIMPLE, TWO STEP PROCESS.

STEP 1:

Submit a Housing Deposit.

New and returning students are required to submit a \$250 housing deposit by the suggested dates.

STEP 2:

Book your room and meal plan using Student Web Self-Assign (SWSA).

SWSA enables students to access remotely the system after step 1 has been completed. This system is designed to handle requests on a first-come, first-served basis, so the sooner you book, the greater your chances to secure accommodations.

DATES FOR GRADUATE HOUSING SELECTION PROCESS

Room Retention Process

Friday, March 25 – Friday, April 8, 2011

(select the same room)

for Returning Graduate Students

General Room Selection

Monday, April 11 – Sunday, May 1, 2011

for New and Returning Graduate Students





GRADUATE HOUSING POLICIES AND PROCEDURES

Buildings for Graduate Housing

The Graduate Housing consists of two facilities: Triangle Apartments/Triangle House and Podiatric Complex. Triangle Apartments/Triangle House is located on Temple's Main Campus, and the Podiatric Complex is located adjacent to the School of Podiatric Medicine and conveniently in Center City Philadelphia.

Summer Graduate Housing Intent

As a current resident of Graduate Housing who has renewed your License for 2011-2012 academic year, you have the option to remain in University Housing through June and July for an additional charge. You will need to fill out the Summer 2011 Graduate Housing Intent Form. This Form can be found on the Internet or at the Housing Office located at 1910 Liacouras Walk, 2nd floor, Philadelphia, PA 19122

Deadline to submit form is May 1, 2011

Furniture Rental

The Triangle Apartments are unfurnished. You may bring your own furniture or rent a bed, dresser, desk and desk chair at approximately \$169 per semester

Notification About your Housing and Move-In Details

You will receive a letter to confirm your request for Graduate Housing along with important information from University Housing and Residential Life. The Graduate License period begins August 1st. Prior to arriving on campus, you must set up a Check-in Appointment with the Resident Director and instructions will be provided in your confirmation letter.

Cancelling Your Housing

If you decide to cancel your housing application, a Request to Cancel the Housing License Form will be included in your notification packet. Penalties as they apply to you are on the form and also on page 1 of your Graduate Housing License



OFF - CAMPUS LIVING

Temple University Housing cannot guarantee on-campus housing to all of its graduate students. However, Temple University does offer several programs to assist students with OFF-CAMPUS LIVING options throughout the metropolitan Philadelphia area. Off-Campus living information is available at our web site at:

www.temple.edu/housing/offcampus

On our Web site, students will find available listings, cataloging apartments and houses in the surrounding area. Additionally, students will find the Roommate Search Listings, helpful resources, and tip sheets to aid students in their off-campus search.

What makes living off-campus appealing to students is that within minutes from Temple's campuses, you will find yourself in Center City Philadelphia with the convenience of shopping, restaurants, nightlife, and a high concentration of residential neighborhoods. Some areas include Washington Square, Avenue of the Arts, Rittenhouse Square, Chinatown, Old City, and the Art Museum/Fairmount. Each of these areas offers a wide selection of property types (high-rise, brownstone, etc.), with a wide range of amenities such as doorman buildings, 24-hour security, and other amenities to fit different budgets. Each area has its own charm and feel, providing students with a comfortable living environment and rich historic feel of Philadelphia. The Office of University Housing and Residential Life can provide you with assistance in finding alternatives right around the corner from campus.

For further information on different living options throughout the metropolitan Philadelphia area, please call 215-204-3279 to contact a staff person who works with Off-Campus Living Services. Students are also welcome to schedule and appointment for individual advising with a staff person from Off-Campus Living.

Temple University cannot assume any responsibility for specific off-campus facility not directly managed by Temple University Housing and Residential Life.

TRIANGLE HOUSE

Conveniently located on Temple University's Main Campus, **TRIANGLE HOUSE** is a unique living option for 10 same-gender graduate and professional students. Situated at 1928 N. Broad Street, Triangle House is attached to a row of converted brownstones (Triangle Apartments). Triangle House is close to the Beasley School of Law, Paley Library, and most Main Campus academic buildings, and minutes away by shuttle from Temple's Health Sciences Campus and School of Podiatric Medicine.

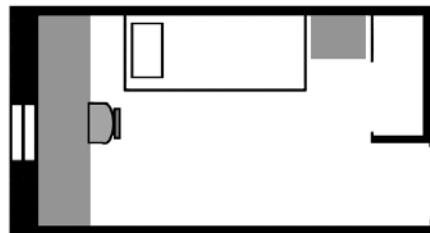
What makes Triangle House unique is that this brownstone is similar to a home, where same-gender residents share a common living room, kitchen, and bathrooms. Inside Triangle House, students are assigned to one of the four double rooms or two single rooms. Utilities included in the room rate of Triangle House: electric heat, water, and cable TV. For information on establishing telephone and internet see page 4.

*Triangle Apartments come furnished or unfurnished, unlike the Podiatric Residence complex where all apartments come furnished and furniture will not be removed.

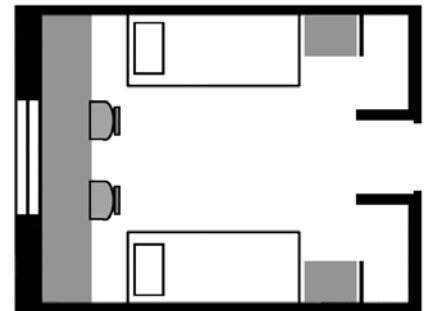
Other features of Triangle House include:

- **Furnished bedrooms and common areas**
- **Wall-to-wall carpeting in most apartments**
- **Room air conditioner units**
- **Coin-operated laundry facilities on site**
- **Tennis courts behind the complex**
- **A community social room**
(shared with Triangle Apartments)
- **A study area located on the lower level**
- **GRA staff who live at the Triangle Complex**

* This facility is not handicap accessible



Triangle House Single Room dimensions are approximately 8x10.



Triangle House Double Room dimensions are approximately 12x14.

2011 - 2012 RATES FOR TRIANGLE HOUSE

*proposed rates, subject to change

Shared Bedroom

Double Occupancy

Semester Rate	\$2,640
Summer Rate	\$1,048

Private Bedroom

Single Occupancy

Semester Rate	\$3,118
Summer Rate	\$1,239

2011 - 2012 RATES FOR TRIANGLE APARTMENTS

Standard Individual Apartment

Unfurnished Semester Rate \$4,675

Furnished Semester Rate \$4,844

Unfurnished Summer Rate \$1,862

Furnished Summer Rate \$1,929

Large Individual Apartment

Unfurnished Semester Rate \$5,146

Furnished Semester Rate \$5,315

Unfurnished Summer Rate \$2,050

Furnished Summer Rate \$2,118

1 Bedroom in a 2 Bed / 1 Bath

Unfurnished Semester Rate \$3,414

Furnished Semester Rate \$3,583

Unfurnished Summer Rate \$1,357

Furnished Summer Rate \$1,425

1 Bedroom in a 2 Bed / Bath

Unfurnished Semester Rate \$3,634

Furnished Semester Rate \$3,803

Unfurnished Summer Rate \$1,445

Furnished Summer Rate \$1,513

*proposed rates, subject to change

TRIANGLE APARTMENTS

Located on the 1900 block of N. Broad Street and the 1400 block of W. Norris Street, **TRIANGLE APARTMENTS** are a series of converted brownstone apartments serving Temple's Main Campus, and only minutes away by shuttle from the Health Sciences Campus and Temple's School of Podiatric Medicine, Triangle Apartments offer individual and shared apartments for 95 graduate and professional students.

Triangle Apartments are a three-story facility offering single-level and multi-level apartments. Apartments come in a variety of different sizes and configurations and can either be unfurnished or furnished with bedroom furniture (residents must provide their own living room and dining room furniture).

Each brownstone has three to six apartments, creating a small community of residents. Utilities included in the room rate of Triangle Apartments: electric, heat, water, and cable TV. For information on establishing telephone and internet see page 4.

Other features of Triangle Apartments include:

- Wall-to-wall carpeting in most apartments
- Installed room air conditioner units
- Coin-operated laundry facilities on site
- Tennis courts behind the complex
- A community social room (shared with Triangle House)
- Security screens on all first floor units
- GRA staff who live at the Triangle Complex

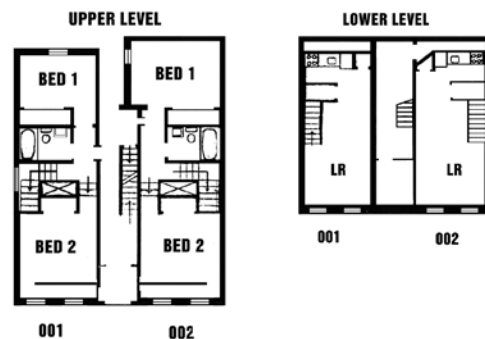
*This facility is not handicap accessible.



Many of the 82 different **TRIANGLE APARTMENTS** are unique and offer distinct features from one another. Some of these special features include units that are multi-level, have spiral staircases, have open loft bedrooms, and bay windows. University housing acknowledges that residents may discover differences in floor plans from one unit to the next. Room rates are based on overall square footage and/or amenities of the entire apartment and number of applicants per unit.

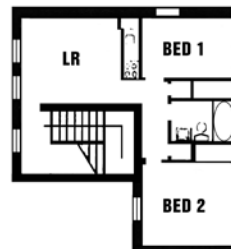
STANDARD TWO-BEDROOM MULTI-LEVEL APARTMENTS

TRIANGLE 001	LIVING / DINING ROOM BEDROOM 1 BEDROOM 2 (OPEN LOFT)	9 X 20 8 X 8.5 8.5 X 10.5
TRIANGLE 002	LIVING / DINING ROOM BEDROOM 1 BEDROOM 2 (OPEN LOFT)	9 X 20 8 X 8.5 8.5 X 10.5



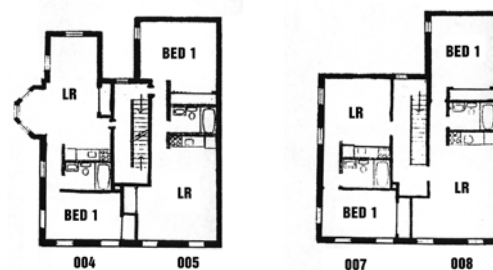
STANDARD TWO-BEDROOM APARTMENTS

TRIANGLE	003,006,009	
	LIVING / DINING ROOM	10 X 12
	BEDROOM 1	8 X 10
	BEDROOM 2	10 X 10



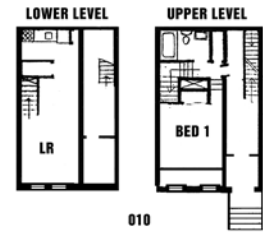
ONE-BEDROOM APARTMENTS

TRIANGLE 004	LARGE ONE-BEDROOM	
	LIVING / DINING ROOM	12 X 20
	BEDROOM 1	10 X 12
TRIANGLE 005, 008	STANDARD ONE-BEDROOM	
	LIVING / DINING ROOM	10 X 16
	BEDROOM 1	9 X 10
TRIANGLE 007	STANDARD ONE-BEDROOM	
	LIVING / DINING ROOM	12 X 12
	BEDROOM 1	10 X 12



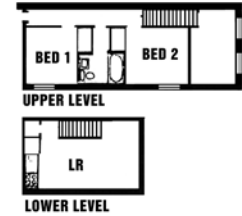
LARGE ONE-BEDROOM MULTI-LEVEL APARTMENTS

TRIANGLE 010, 016, 022, 028, 034, 040, 046, 052, 058, 063, 068
 LIVING / DINING ROOM 9 X 20
 BEDROOM 1 8 X 10.5 (OPEN LOFT)



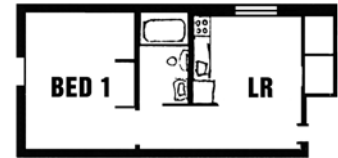
STANDARD TWO-BEDROOM MULTI-LEVEL APARTMENTS

TRIANGLE 011, 023, 029, 035, 041, 053
 LIVING / DINING ROOM 8 X 16
 BEDROOM 1 8 X 10
 BEDROOM 2 8 X 10 (OPEN LOFT)



STANDARD ONE-BEDROOM APARTMENTS

TRIANGLE 012, 014, 018, 020, 024, 026, 030, 032, 036, 038, 042, 044, 048, 050, 054, 056, 060, 062, 065, 067, 070, 071
 LIVING / DINING ROOM 10 X 16
 BEDROOM 1 8 X 10



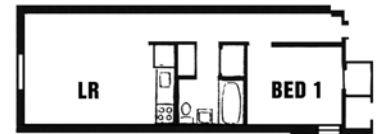
STANDARD ONE-BEDROOM APARTMENTS

TRIANGLE 013, 015, 031, 033, 037, 039, 043, 045, 049, 051
 LIVING / DINING ROOM 10 X 12
 BEDROOM 1 10 X 12



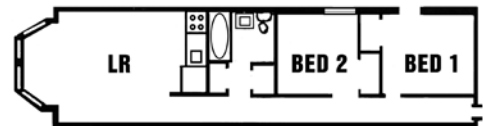
LARGE ONE-BEDROOM APARTMENTS

TRIANGLE 019, 021, 025, 027
 LIVING / DINING ROOM 12 X 22
 BEDROOM 1 8 X 9.5



LARGE TWO-BEDROOM APARTMENTS

TRIANGLE 047, 055, 057
 LIVING / DINING ROOM 12 X 22
 BEDROOM 1 8 X 10
 BEDROOM 2 8 X 10



STANDARD ONE-BEDROOM MULTI-LEVEL APARTMENTS

TRIANGLE 059, 064, 069
 LIVING / DINING ROOM 8 X 10
 BEDROOM 1 8 X 10 (OPEN LOFT)



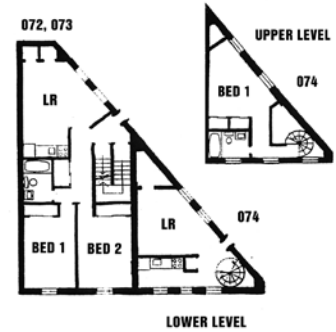
LARGE ONE-BEDROOM MULTI-LEVEL APARTMENTS

TRIANGLE 061, 066
 LIVING / DINING ROOM 15 X 20
 BEDROOM 1 8 X 10



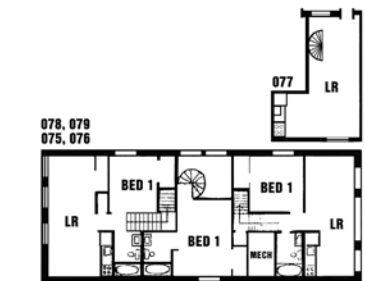
STANDARD TWO-BEDROOM APARTMENTS

TRIANGLE 072, 073
 LIVING / DINING ROOM 15 X 17 X 20
 BEDROOM 1 10 X 16
 BEDROOM 2 10 X 16



LARGE ONE-BEDROOM MULTI-LEVEL APARTMENT

TRIANGLE 074
 LIVING / DINING ROOM 8 X 12 X 22
 BEDROOM 1 8 X 12 X 18



STANDARD ONE-BEDROOM APARTMENTS

TRIANGLE 075, 076, 078, 079
 LIVING / DINING ROOM 10 X 14
 BEDROOM 1 10 X 10

LARGE ONE-BEDROOM MULTI-LEVEL APARTMENT

TRIANGLE 077
 LIVING / DINING ROOM 10 X 14
 BEDROOM 1 10 X 11 (OPEN LOFT)



LARGE TWO-BEDROOM TWO-BATH APARTMENTS

TRIANGLE 080, 081
 LIVING / DINING ROOM 11 X 20
 BEDROOM 1 14 X 17 X 21
 BEDROOM 2 15 X 17 20

LARGE TWO-BEDROOM TWO-BATH APARTMENT

TRIANGLE 082
 LIVING / DINING ROOM 12 X 16
 BEDROOM 1 10 X 16
 BEDROOM 2 10.5 X 16.5



2011 - 2012 RATES FOR PODIATRIC STUDENT COMPLEX

Efficiency

Semester Rate \$4,769

Summer Rate \$1,899

Individual 1-Bedroom Apartment

Semester Rate \$5,409

Summer Rate \$2,155

1 Standard Bedroom in a 2 or 3 Bedroom Apartment

Semester Rate \$3,666

Summer Rate \$1,458

1 Large Bedroom in a 2 or 3 Bedroom Apartment

Semester Rate \$3,976

Summer Rate \$1,582

1 Deluxe Bedroom in a 2 or 3 Bedroom Apartment

Semester Rate \$4,221

Summer Rate \$1,680

*proposed rates, subject to change

PODIATRY

This seven-story apartment building is located on the corner of Eighth and Cherry Streets on the Temple University School of Podiatric Medicine Campus in Center City. The **PODIATRIC STUDENT RESIDENCE COMPLEX (PSRC)** offers the convenience of campus living for 127 professional and graduate students with the benefits of city life. Many of Philadelphia's finest shops, cultural and historic attractions are within easy walking distance of the complex.

Six different furnished apartment styles are offered to students in efficiency, one-, two-, and three-bedroom configurations. Utilities included in the room rate at the Podiatric Student Residence Complex: electric, heat, water, and cable TV. For information on establishing telephone and internet see page 4.

Other features of the Podiatric Student Residence Complex include:

- Front entrance security intercom
- Secured access with an attendant on duty during evening hours and weekends
- Carpeted living and bedroom areas
- Fully air-conditioned units
- Newly renovated group study rooms and carrels
- Coin-operated laundry facilities on each floor
- GRA and professional staff who live on site
- Separate storage bins for each apartment unit
- A fitness and computer room located on the TUSPM campus
- A community social room

*The Podiatric Student Residence Complex is handicap accessible.

There is a free complimentary Shuttle Service between Podiatry, Main, and Health Sciences Campus.



INDIVIDUAL STUDIO APARTMENT

APARTMENTS ENDING IN x07
COMBINATION LIVING ROOM / KITCHEN / BEDROOM 13 X 21



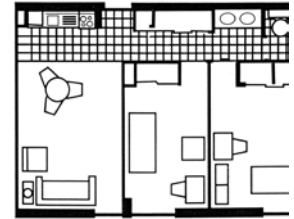
INDIVIDUAL ONE-BEDROOM APARTMENT

APARTMENTS ENDING IN x02, x11
LIVING / DINING ROOM 10 X 19
BEDROOM 12 X 13



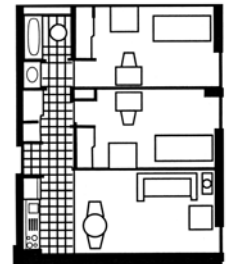
TWO-BEDROOM APARTMENT

APARTMENTS ENDING IN x04, x05, x08, x09, x010
LIVING / DINING ROOM 10 X 16
BEDROOM 1 9 X 10
BEDROOM 2 9 X 10



TWO-BEDROOM APARTMENT

APARTMENTS ENDING IN x03
LIVING / DINING ROOM 9 X 19
BEDROOM 1 9 X 13
BEDROOM 2 9 X 13



TWO-BEDROOM APARTMENT

APARTMENTS ENDING IN x01, x12
LIVING / DINING ROOM 12 X 19
DELUXE BEDROOM 12 X 13
LARGE BEDROOM 9 X 13



THREE-BEDROOM APARTMENT

APARTMENTS ENDING IN x06
LIVING / DINING ROOM 12 X 16
BEDROOM 1 9 X 10
BEDROOM 2 9 X 10
BEDROOM 3 9 X 10

