

TEMPLE
Medicine

A PUBLICATION OF THE TEMPLE UNIVERSITY SCHOOL OF MEDICINE WINTER 2007

A NEW HOME FOR
TEMPLE UNIVERSITY SCHOOL
OF MEDICINE



GROUND HAS BEEN BROKEN!

Contents



page 2

Features

COVER STORY

A Spectacular New Home for Temple University School of Medicine

2

Latch's Legacy Lives On

13



page 13

Departments

News Notes

15

Alumni and Faculty Honors and Awards

25

Class Notes

30

What Ever Happened to...

Stanley H. Lorber, MD

35

Student View

36

Philanthropy Notes

38

In Memoriam

46



page 35

EDITOR/PRINCIPAL WRITER

Giselle Zayon
Director, Alumni Affairs

ART DIRECTOR/DESIGNER

Jacqueline Spadaro
Temple University Office of Publications [146-0607]

EDITORIAL ASSISTANCE

Kenneth R. Cundy, PhD
Beth Galinsky
Kathy Harmer
Barbara Rubin

CONTRIBUTING WRITERS

Vivica Aycox
Gwen Coverdale
John Daly, MD '73
Kim Fischer
Eryn Jelesiewicz
Elizabeth LaBan
Preston Moretz
Jordan Reese
Ingrid Thack

PHOTOGRAPHERS

Ryan Brandenburg
Joe Labolito
Kevin Monko
Mark Stehle

DEAN

John M. Daly, MD '73

ASSISTANT DEAN,

DEVELOPMENT
and ALUMNI AFFAIRS

Eric J. Abel

PRESIDENT,

ALUMNI ASSOCIATION

Paul Hermany, MD '82

CORRESPONDENCE

Temple University
School of Medicine
Alumni Office
3223 N. Broad Street, Suite 415
Philadelphia, PA 19140

215.707.4850

800.331.2839

E-MAIL:

templemed@temple.edu



Copyright © 2007
by Temple University

Temple University is committed to a policy of equal opportunity for all in every aspect of its operations. The University has pledged not to discriminate on the basis of race, color, sex, age, religion, national origin, sexual orientation, marital status, or disability. This policy extends to all educational, service, and employment programs of the University. For more information or to review Temple University's Affirmative Action Plan, contact the Office of Affirmative Action, 109 University Services Building, 215-204-7303 (TTY: 215-204-6772).

A SPECTACULAR NEW HOME FOR TEMPLE UNIVERSITY SCHOOL OF MEDICINE

by John Daly, MD '73, Dean

The future is now—and Temple University School of Medicine is ready.

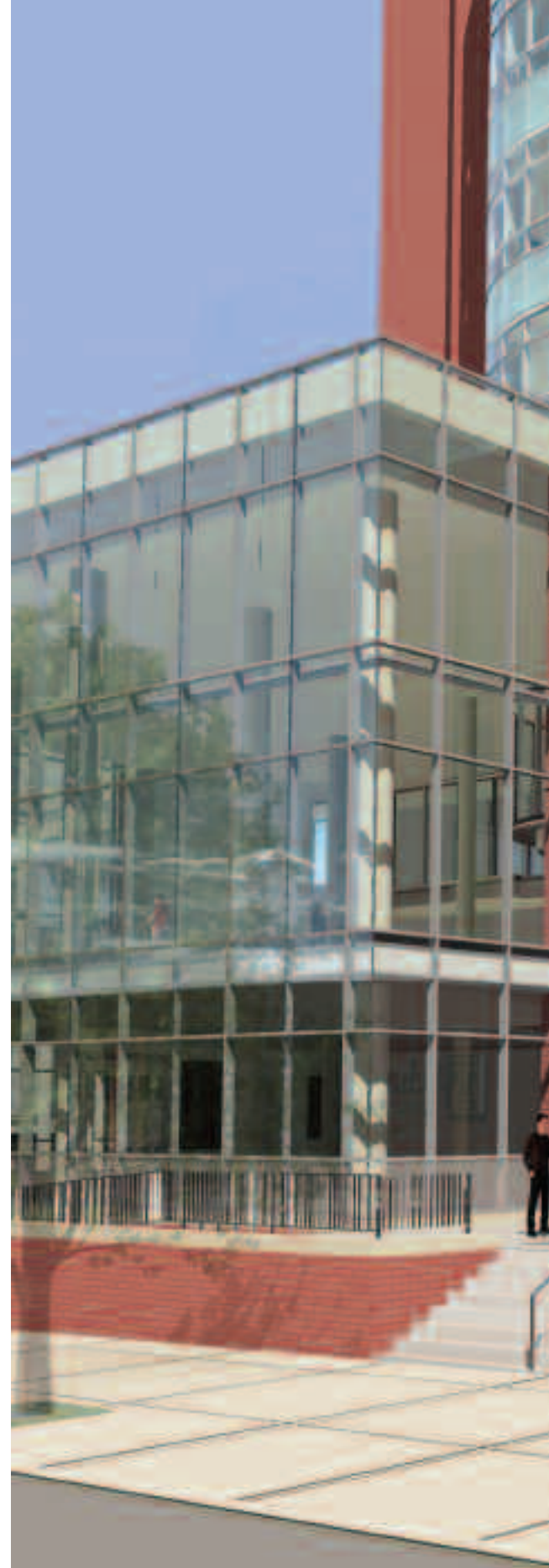
We have a full year behind us with our innovative new integrated curriculum. We have attracted 262 additional faculty members from leading institutions around the country and the world during the past four years. We are operating nine world-class multi-disciplinary research centers, and our overall research enterprise is growing by leaps and bounds. Our reputation as a premier urban medical school is growing. We are attracting sharper and more socially conscious students every year.

And now we have broken ground for a spectacular new home for the school. Its impact will be nothing short of transformative.

At a projected cost of \$150 million, the 11-story structure to rise on the northwest corner of Broad and Tioga streets, just north of the existing complex, is the largest capital project in the history of Temple University—and the first new medical school building to be constructed in nearly 40 years. Slated to open in 2009, the new building will become the primary site of teaching and research within the school.

It will stand as a striking symbol of Temple's commitment to teaching the medicine of tomorrow *today*.

Most important, it is designed to meet our needs well into the future, supporting the continued evolution of medical education.





School of Medicine
TEMPLE UNIVERSITY



From one to four in a flash. Many classrooms in the new building can be transformed from one large room to two medium- or four small-sized classrooms in a matter of minutes.

THE NEW SCHOOL OF MEDICINE AT A GLANCE

- **Location** West side of North Broad Street between Venango and Tioga Streets, across from Temple University Children's Medical Center, and just across Tioga Street from Kresge Hall
- **Exterior** Glass and brick
- **Square footage** 480,000 gross square feet; 301,052 net square feet, featuring 100,010 square feet of academic space (including a 50,000 square foot library), 157,920 square feet of research space, and 43,122 square feet of public and support space
- **Number of stories** 11
- **Estimated Cost** \$150 million
- **Construction Start** September 2006
- **Anticipated Opening** 2009
- **Architect** Ballinger, Inc.

A DESIGN OPEN TO CHANGE

With more than 301,052 net square feet of space, the new building will alleviate the severe space constraints under which the school has operated for many years, providing a truly state-of-the-art setting for teaching, learning, and research.

Its flexible, open design will house 100,010 square feet of academic space, 157,920 square feet of research space, and 43,122 square feet of public and support space, increasing the school's capacity for further creativity and innovative teaching and research.

This facility is going to have a profoundly positive impact on our quality of life, and what a boon it will be in terms of recruiting stellar faculty and students, making Temple more attractive than ever.

Among the scores of features and facilities to support academic and community life in the new structure are high-tech dry labs that can simulate wet lab experiences, wired and wireless infrastructure throughout to support the latest educational technologies, and classrooms that can quickly be reconfigured for large lectures or small breakout spaces for the interactive small-group sessions that have become central to the learning experience.

The new library within the building will serve not only students and faculty in medicine but also Temple's programs in pharmacy, dentistry, nursing, and related health professions, further facilitating the interdisciplinary nature of contemporary health sciences.

An attractive café, a spacious and comfortable lobby, and ample study and meeting space will support the community life of the school.

A glass-enclosed collaborative learning and research tower will house a series of stacked, multi-purpose rooms that can be used for teaching, meetings, office space, instructional support, study space or dining.

A third-floor bridge, connecting the new building with the old, will breathe new life into Kresge Hall, allowing the older building to be used in concert with the new.

FACILITIES FOR INTEGRATED, INTERACTIVE LEARNING

Classrooms will be made of moveable and removable walls, allowing for quick changes from intimate learning settings to accommodations for larger groups.

Open, flexible laboratories will mark a significant shift in the research culture toward collaboration and interdisciplinary study, supporting current trends toward interdisciplinary and translational (bench to bedside) research.

The building's glass exterior and soaring atrium will be a spectacular landmark for the approximately 10,000 people who traverse Broad Street every day.

It is more than just a wonderful structure; it's a real *home* for our thriving community.

As featured in the previous *Temple Medicine*, the School of Medicine rolled out a bold new curriculum for medical students last year, and planning for a revamped curriculum for graduate students is underway. Meet the perfect "teacher's aide": The new building.

In addition to the many classrooms that can be reconfigured for proper size at the drop of a hat, and "smart" classrooms equipped with the newest and finest in educational media, the building will help faculty get the most out of the new, integrated curriculum, with swift moves between basic and clinical sciences, and hands-on experiences with patients paired with forays into medicine's virtual world.

A spacious, airy Commons, filled with natural light, will provide ample space to study, relax, and dine. Receptions, events, and exhibits will be held here as well.





A paved promenade and terrace will create a wonderful outdoor space as well as help buffer the structure from busy Broad Street

For example, explains **Ellie Kelepouris, MD**, Professor of Medicine and Chair of the New Building Task Force on Academics, students in gross anatomy can perform cadaver dissection in close proximity to virtual dissection via MRI or CT images on a computer screen, then interact with standardized patients in the clinical skills suite, and later work with sophisticated robotic mannequins programmed to replicate medical events in the simulation center, while faculty members observe interactions through one-way glass windows or remotely by real-time video. With strategically placed retractable video cameras and screens, interventions can be recorded and reviewed.

“The new building will contribute to life-long learning by facilitating an innovative, student-centered approach to medical education from day one,” says Dr. Kelepouris.

RAMPED UP RECRUITMENT

Faculty members are critical to the student success, and Temple is proud to employ some of the finest educators in medicine.

In recent years, Temple has attracted outstanding new faculty members at an unprecedented rate, surpassing the national average and drawing a significant number from out of state. These top scholars—77 new full-time faculty members in fiscal year 2005 alone—have come from leading institutions around the nation to participate in Temple’s dynamic growth and make their mark on students, patients, and modern medicine—faculty such as **Joel Richter, MD**, Chair of Medicine (formerly Professor of Medicine at the Lerner College of Medicine/Case Western Reserve University and Chairperson of the Department of Gastroenterology and Co-Director of the Digestive Disease Center at the Cleveland Clinic Foundation) and **Christopher Loftus, MD**, Chair of Neurosurgery (formerly Professor and Chair of the Department of Neurosurgery at the University of Oklahoma).

As we proceed into the 21st century, our faculty will grow larger and more academically diverse, drawing even more top students from around the world to pursue medical education at Temple.

RISING APPLICANT INTEREST

Temple enrolls approximately 800 students in our MD program and 140 students in our MS and PhD programs.

Last year, the Medical School received 8,400 applications—a 13.5 percent increase over 2004—for the 180 coveted seats in the Class of 2010. Approximately 45 percent of these new admits are women, and 25 percent are under-represented minorities. The Class of 2010 comes to Temple with an average undergraduate GPA of 3.63 and MCAT score of 31.

Two factors will prompt this upward trend in applicant quantity and quality to continue: First, scholarships. We have increased our scholarship and loan funding by 76 percent since 2004, attracting a larger, and more talented applicant pool.

Second, the new building. It will have a marked impact on both student and faculty recruitment. In recent years cramped and outdated quarters have sometimes worked against us.

REINVIGORATED RESEARCH

Seven floors of the new building are dedicated to research: 157,920 square feet of open, airy space, adaptable to projects both large and small, of short duration or long, and with input from a single discipline, or a collaboration among many.

The new building will take medical research to a new level at Temple, says **Steven Houser, PhD '78**, Associate Dean for Research, who chaired the task force on research design for the new building.

“And we are well on our way,” he says, explaining that the growth the school is already experiencing in its research programs is projected to continue at a rate of five to 10 percent annually through 2010.

Temple researchers have been awarded more than \$48.5 million in highly competitive public and private grant funds during the past year, including a grant from the NIH’s National Center on Minority Health and Health Disparities to develop a health disparities research and training program aimed at eliminating disparities in racial and ethnic minority and medically underserved communities. Temple is the only academic institution in Pennsylvania and one of only 11 nationwide to be awarded such a grant. Moreover, the growth of Temple’s clinical trials program has doubled during the last three years, with more than 200 currently underway.

Research is growing at Temple—and will get a real shot in the arm in the new building, which is designed to foster greater interaction among researchers from multiple disciplines. Operating in adaptable, integrated laboratory settings, researchers will share equipment, space, central services, and ideas.

Cephalon, Inc., one of the fastest-growing pharmaceutical firms in the world, has funded a new research floor in the new building, and Independence Blue Cross (IBC) has pledged \$3.5 million to support heart research.

The Independence Blue Cross Cardiovascular Research Center will occupy the top floor of the new research wing. Dr. Houser, who is also Director of the Cardiovascular Research Group and Laura H. Carnell Professor of Physiology, very much looks forward to working in the fantastic new space.

“Research is hot at Temple,” says Dr. Houser, “and bound to grow even hotter in our spectacular new space.”

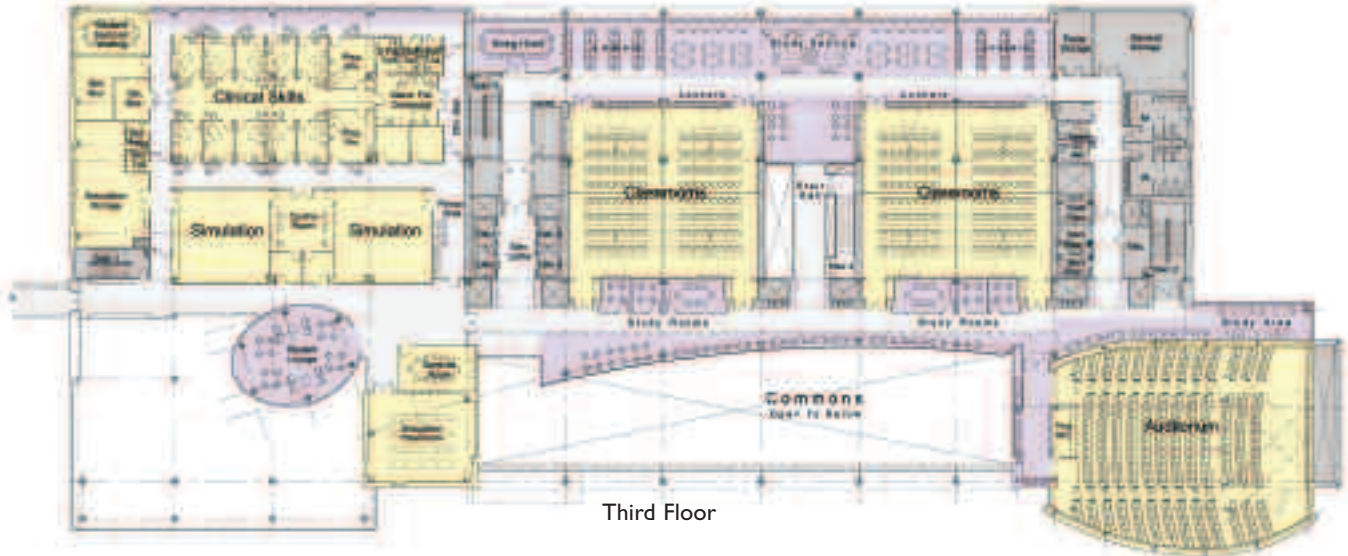
A good example of the kind of research enterprise that will benefit from the facilities in the new building is the Department of Neuroscience, which ranks #5 nationally, behind noted schools like Johns Hopkins and Yale.

Under the direction of **Kamel Khalili, PhD**, researchers from varied fields come together on leading-edge studies that could lead to novel therapeutic strategies for diseases such as Alzheimer’s and Parkinson’s, as well as brain tumors, multiple sclerosis, AIDS dementia, and other viral and non-viral-induced disorders.

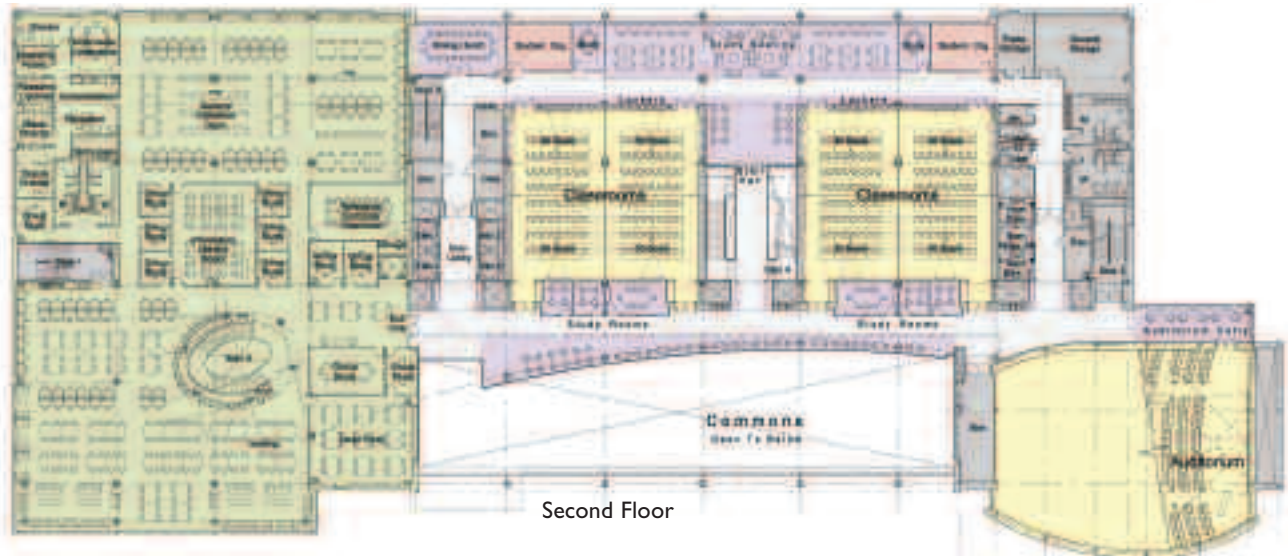
The department is structured on a model of collaboration and interdisciplinary study that extends both internally and externally.

The view facing south will be particularly eye-catching at night, with glowing light emanating from the curving glass façade.





Third Floor



Second Floor



First Floor

Its external collaborators include 14 other departments within the School of Medicine and the University, and four centers comprise it: the Center for Neurovirology; the Center for Neuro-oncology; the Center for Neuroimmunology; and the Center for Neurodegeneration/Regeneration and Plasticity. These four centers rely on six central core services, proteomics, tissue culturing, neuroimaging, neuropathology, immunology, and the experimental animal core, that create the infrastructure for all the research conducted in the department. The spacious, modern, centralized facilities of the new building will increase the capacity of the department to provide these services to a much broader group of investigators, both in and outside of neuroscience. Other core, shared service centers will be established in the new building as well, further ramping up productivity.

“The new building is going to improve our ability to inspire and train the young scientists who will create the breakthroughs of tomorrow,” says Dr. Khalili.

A LIBRARY FOR TOMORROW

At the heart of the new building will be the Health Sciences Library. Open 24/7, the contemporary, tri-level, 50,000-square-foot space will be the gateway to information for thousands of students, faculty, clinicians, and scientists in medicine and in the other health sciences at Temple.

Over the years, the tripartite mission of a library within a major medical center—that of supporting patient care, education, and research—has not changed, but the library’s methods for carrying out that mission have.

“Students and researchers still need to consult literature to aid in diagnoses or to compare and contrast research results to identify a competitive edge for federal dollars,” says **Mark-Allen Taylor, JD**, Director of the Health Sciences Library, “but now they can do that at any time of day or night from anywhere in the world—with Internet access.”

Today’s library is something different, more than just a place to study or look through collections of journals or books. Temple’s new library will be a place that helps information-seekers get the most from cutting-edge informational technology, a place that promotes collaborative and interdisciplinary learning and research.



Above: The three-story library will be a place to study and gather 24-hours a day.

Left: Floor plans of the first, second and third floors of the new building for the School of Medicine

Quiet study areas will absolutely have a home in the new library, but just as much space will encourage talking and lively debate. Today’s libraries are places to engage in group learning, for students in all the health science programs on campus to come together as learners, researchers, members of cross-disciplinary health care teams.

“More than just a repository of knowledge, this library will be the meeting place on campus, says Microbiology and Immunology Professor **Toby Eisenstein, PhD**, Co-Director of the Center for Substance Abuse, who chaired the task force that helped plan the library. “It will be a place where faculty and students can meet for informal interaction and exchange of ideas.”

Moreover, since students do not live on campus, the library was conceived of as a home away from home—“a place where students can gather, think, relax, and be creative,” says Dr. Eisenstein, “a beautiful, spacious venue enhanced by multimedia technology—a place where scholarly pursuits and friendships will thrive.”

Housed in a welcoming, inspirational environment, the Health Sciences Library will support Temple’s students, researchers, scientists, and educators with virtual lecture halls, virtual laboratories, online courses and continuing education, computer modeling and simulations, e-learning and telemedicine—all the modern accoutrements of medicine and medical education.

Q & A WITH THE ARCHITECTS

Ballinger, Inc.



William Gustafson
President



Craig Spangler
Design Principal

Q: What is unique about this building compared to buildings other medical schools have built in recent years?

A: Very few medical schools are building completely new buildings right now; many are just upgrading and retrofitting old structures. But Temple has been singular in its commitment to creating the best building possible. Temple is unique in its boldness of scale and vision. It is exciting to work with people so committed to their vision for the future while maintaining the strong identity and rich history of the school.

Q: How do elements in the new building support emerging trends in medical education and research?

A: When Temple began planning for this project in 2002, they set out to determine what is needed to support the best in medical education, for now and for many years to come. What they came up with is the standard of excellence, outfitting the building with the latest technology for learning and research.

The building is designed for current and emerging trends in medical education, such as virtual learning and patient interaction, small-group breakouts, collaboration among various disciplines, smart classrooms, flexible adaptable space, wireless technology throughout, and so forth. In many respects, Temple is ahead of the curve. For example, one trend is a move away from cadavers in gross anatomy (with virtual technologies replacing the traditional methods). Temple foresaw the benefits of maintaining both.

Another trend is increased class size. The Association of American Medical Colleges has requested that schools increase class sizes by 20 percent in anticipation of projected physician shortages. Temple's new building will easily accommodate a class size of 220 for the M.D. curriculum should the school choose to increase beyond its current level of 180.

Q: What will this building “say” to students, faculty, alumni and passers-by?

A: This building will be a beacon on Broad Street—a progressive, iconic structure that symbolizes the dedication of the people working and studying within it, a source of pride for the university community and for Philadelphia.

Its brick and glass exterior is simultaneously warm and contemporary. Brick is warm, wears better than pre-cast concrete, and integrates the building with the older campus buildings, which are mainly brick. Glass makes the building essentially transparent and open, giving it a spacious, modern look and feel, and infusing the building with natural light.

This building will say that Temple is both traditional and transforming. It will say that Temple is renewing its commitment to medical education and service to the community, and that Temple is setting the stage for what is to come.



THE WOW FACTOR

“In planning this building, we set out to create a focal point for the campus and the community,” says **Stephen Permut, MD ’72**, Assistant Dean for Academic Affairs and Chair of Family Medicine, who chaired the new building task force on public space. “We want people seeing the building for the first time to say, ‘WOW. This is Temple medical school.’”

Part of the “wow” factor, of course, relates to the stunning physical appearance of the building. Its bold, eye-catching design says both “contemporary” and “warm.” Its towering, sparkling glass façade will be anchored by a brick foundation and an attractive landscaped terrace, providing an inviting space for students and faculty to gather and enjoy lunch during the warmer months.

Inside, it’s WOW again, with a soaring, airy atrium and lobby with comfortable seating for studying, relaxing and dining—a space that will be central to the daily life of the school and can also serve as an elegant and spacious setting for special events, such as the white coat ceremony.

Another WOW is that space has been strategically allocated for maximum efficiency, productivity, and impact. The Admissions Office, for example, is geographically situated to “pull” prospective students into the core of the school. Applicants will first walk through the impressive front lobby, through the bustling commons, and pass a gallery featuring memorabilia from Temple’s remarkable history. When they reach the Admissions Office, they’ll be across from a bay of classrooms filled with lively discussions or spirited debate.

Edward G. Rendell, Governor of the Commonwealth of Pennsylvania, sings Temple’s praises during the ground-breaking ceremony for the new medical school building on November 1, 2006. Temple University President Ann Weaver Hart, Dean John Daly, Karen Siren of the MD Class of 2008, and University Trustee and Board of Visitors member Solomon Luo, MD-Res ’86, enjoy the governor’s remarks.



Breaking ground together: Solomon Luo, MD-Res '86, Dean John Daly, University President Ann Weaver Hart, Chair of the Board Daniel Polett, and Karen Siren of the Class of 2008

When they tour the new facility, they'll see labs, classrooms and study spaces both large and small, and two big auditoria for special lectures and gatherings. They'll see rooms dedicated to student government and organizations, places designed for medical student life.

"WOW" also pertains to the sensitivity of the design to Temple's larger community in North Philadelphia.

"We explored the impact of the building on the surrounding neighborhood and worked with community and church groups to address their concerns," says Dr. Permut. As a result, all of the servicing for the building will take place below street level. The building will have an attractive back façade that will not block traffic when trucks are loading or unloading supplies and equipment.

In the final analysis, the new building is going to WOW us with its impact on the medical school community. The spirit, morale and quality of daily life at the School of Medicine will be transformed by this facility.

TO THE FUTURE

Where *do* blueprints end and professions begin? When is a building just a building or something more—an institution, a place of rich tradition and promise, a school, a home?

It is time for Temple University School of Medicine to have facilities that are commensurate with the quality of our faculty, students, research enterprise and curricula.

I am enormously excited about this new home for our school. And I am enormously proud of our students and faculty. What they have accomplished in cramped, outdated quarters for so many years is remarkable. Imagine what will happen when we *really* have the space to spread our wings.

FOR TEMPLE PEOPLE, BY TEMPLE PEOPLE

Dozens of alumni, faculty members, students and friends participated in the planning for the new School of Medicine building by working on one of the following task forces: Academic Facilities, Public Space and Community Integration, Library, and Research.

Although funding for the building is not yet complete, alumni, faculty, students and friends have already contributed \$23 million toward the \$33 million that must be raised for the project by 2009.

For more information, see pages 38 through 45.

LATCH'S LEGACY LIVES ON

“He really cared about us.”

That’s the sentiment spoken repeatedly whenever a Temple-trained orthopedic surgeon talks about “Latch”—

John W. Lachman, BA ’40, MD ’43, a former chair of Temple’s Department of Orthopedic Surgery. Now retired, Latch lives in Juno Beach, Fla.

“He stood by us in tough times, like a father would. He treated us like family,” says **Paul Weidner, MD ’82**, an orthopedic surgeon in Sellersville, Pa.

Michael Gratch, MD ’76, who practices orthopedics in Abington, Pa., adds, “There is not one of us who went through the residency who doesn’t stop and think, ‘now what would Latch do’ when presented with a difficult situation. He held us to the highest principles in medicine and in life.”

To show appreciation for everything he and his Temple-trained colleagues learned from Latch, Dr. Gratch has initiated a fund-raising campaign in his honor. Dr. Weidner jumped on board to help, as did **Joseph Scornavacchi, MD ’73**, an orthopedic surgeon in Huntingdon Valley, Pa. Their aim in creating the Lachman campaign is to name a prominent space in the new medical school building after Dr. Lachman, a place that will pay tribute to the man who taught them so well and exemplifies excellence in their field.



Michael Gratch, MD '76

“The Lachman legacy lives on at Temple,” says Dean Daly. “He was a great leader. He upheld the highest standards and worked tirelessly to ensure that everyone associated with the program met those standards.”

Known for his sharp intellect and his commitment to students and patients, Dr. Lachman carried on a tradition of greatness in Temple orthopedics that began with acclaimed orthopedic surgeon, **Dr. John Royal Moore**, and that continues today under the current chair, **Joseph Thoder, MD ’82**. According to many, Dr. Lachman brought Temple orthopedics to the forefront.



Latch, “in the day”

A graduate of both Temple University and its School of Medicine, Dr. Lachman also completed his orthopedic residency at Temple under Dr. Moore, Temple’s first chair of orthopedic surgery. He remained on the Temple faculty following his residency and, in 1957, succeeded Dr. Moore as chair. He served as chair until 1987 and remained at Temple for eight more years until his retirement in 1995.

Alumnus and Temple faculty member **Joseph S. Torg, MD ’61**, widely celebrated in treating sports-related injuries, also trained under Latch. According to Dr. Torg, one of the biggest lessons Dr. Lachman passed on to his residents was the significance of “meticulous attention to detail.”

Dr. Lachman’s own attention to detail led to an observation that certain patients with a torn anterior cruciate ligament (ACL) demonstrated passive anterior subluxation of the proximal tibia in relationship to the femur that was apparent when the patient was lying on his or her back. Upon closer examination, Dr. Lachman was able to demonstrate that ACL insufficiency was determined easily by stressing the knee in extension rather than in the manner of the classic anterior drawer test.

Using this simple maneuver that Dr. Lachman taught him, Dr. Torg was led to further observations regarding the frequency of ACL tears and the association of these tears with other knee injuries, and to a subsequent publication in the *American Journal of Sports Medicine* in April 1976—



Latch's 1943 graduation photo



Three chairs in a row: Michael Clancy, MD, former Chair, with John Lachman, MD '43, his predecessor, and current Chair and Temple alum Joseph Thoder, MD '82

the first to identify the frequent association of anterior cruciate ligament and meniscal lesions.

Borne from careful attention to even the smallest detail, the maneuver now known as the Lachman Test has withstood the test of time and is recognized throughout the world as the most sensitive clinical test for the determination of ACL injury. “Before the MRI, before people understood the significance of a torn ACL, Dr. Lachman taught us this simple test that is 98 percent accurate,” says Dr. Torg.

The term ‘Lachman Test’ is firmly engraved in the contemporary orthopedic vocabulary,” he says. “As long as people continue to tear their ACLs, the eponym will prevail, and John Lachman will be memorialized for his contributions as a teacher.”

During his years of service, hundreds of students and residents trained under John Lachman’s watchful eye. Many have gone on to very successful careers in orthopedics—in clinical practice and academia. Many are leading surgeons and teachers.

“John Lachman worked enormously hard to give us the best education possible. He is one of a kind,” says Dr. Weidner.

Today, as a result of the camaraderie that Latch fostered, many Temple orthopedic alumni can be found working together long after graduation, and many more have maintained friendships formed during their years at Temple.

For Dr. Gratch, the idea of spearheading a campaign to name a room in the new Medical School building in Latch’s honor was a natural.

Associating a space in the spectacular, state of the art facility—a space that will be used for bringing people together and disseminating knowledge—with the orthopedic legacy forged by Dr. Lachman is a fitting tribute. In this way, the Latch legacy will shine on at Temple for decades to come.

“Dr. Lachman represented so much to me and to the Medical School,” says Dr. Gratch. “Dr. Lachman is a cornerstone figure at Temple.”

For more information or to make a gift to the new Medical School building in Dr. Lachman’s Honor, contact Eric Abel, Assistant Dean, at 215.707.3023 or eric.abel@temple.edu.

A similar campaign has been initiated to honor Carson D. Schneck MD ’59, PhD ’65, with a dedicated space in the new medical school building. Watch for the next *Temple Medicine* for details.

News Notes

Madaio Named Chief of Nephrology



Michael Madaio, MD

Michael P. Madaio, MD, has joined the Temple faculty as Chief of Nephrology and Kidney Transplantation. He comes to Temple from the University of Pennsylvania School of Medicine, where he directed Penn's kidney training program for eight years and conducted immunologic research.

"There's an outstanding opportunity at Temple to blend clinical practice and research and build a center of excellence in specific aspects of kidney disease, including pre- and end-stage renal disease, autoimmune renal disease, and renal transplantation," says Dr. Madaio. "Temple has an outstanding group of clinical nephrologists, some of whom are doing excellent translational research," he says, noting that he plans to enhance their efforts by building up the basic research program and by providing additional avenues for translational research, mainly regarding autoimmune nephritis, transplantation and progressive renal diseases.

He also believes the section is positioned particularly well to serve its African American and Hispanic populations, groups at higher risk for a number of renal-related conditions, including hypertension and diabetes, as well as autoimmune diseases, such as lupus.

Dr. Madaio is co-editor of *Rheumatology and the Kidney* (Oxford University Press, 2001) and has chaired the local Medical Advisory Board of the Lupus Foundation of America since 1991. His research interests include the immune mechanisms of nephritis, lupus nephritis, and novel therapeutic approaches to treat glomerular diseases.

Ellie Kelepouris, MD, Professor of Medicine, served as interim section chief for a year and a half.

Temple Lung Center is Ranked Among the Nation's Best

The Temple Lung Center is ranked among the nation's best respiratory-disease programs in the 2006 *U.S. News & World Report* ranking of America's best hospitals. Temple is one of two Philadelphia area institutions to earn the distinction, underscoring its national leadership in the field in terms of diagnosis, treatment, research and education. In addition, the Center has become one of the first in the nation to receive national certification from the Joint Commission on the Accreditation of Healthcare Organizations (JCAHO) as a Center for Lung Volume Reduction Surgery (LVRS)—the first hospital in Philadelphia, and among the first academic hospitals in the nation so certified.

Under the leadership of Gerard J. Criner, MD '79, Director of the Division of Pulmonology & Critical Care Medicine, the Temple Lung Center is at the fore of new emphysema treatments. The east coast's top recruiter for the National Emphysema Treatment Trial that studied LVRS, the Center is also an active clinical site for the National Heart Lung Blood Institute's COPD Clinical Research Network and the Pennsylvania Study of COPD Exacerbations. The Center is nationally renowned for its superior clinical outcomes, especially in the specialized areas of mechanical ventilation, pulmonary fibrosis, COPD and respiratory failure.

An independent, not-for-profit organization founded in 1951 and the nation's predominant accrediting body in health care, JCAHO launched its Disease-Specific Care Certification program in 2002.

Obesity Expert Foster Heads New Research and Education Center



Gary Foster, PhD

With nearly half of all children projected to be overweight by the end of the decade, Temple has taken a major step toward understanding and addressing the obesity epidemic by appointing **Gary Foster, PhD**, to lead the University's new Center for Obesity Research and Education (CORE).

An internationally renowned obesity researcher who investigates the behavioral and biological effects of dieting and weight loss, Dr. Foster was attracted to Temple because of the University's commitment to supporting a multidisciplinary, University-wide research program. He is formerly the clinical director of the University of Pennsylvania's Weight and Eating Disorders Program.

"There's hardly an organ system or social construct with which obesity doesn't intersect," said Dr. Foster, who also holds the title of Professor of Medicine at Temple and plans to build on the excellent faculty already here, as well as recruit five to 10 new members over the next three years.

CORE will be the focal point for expanding Temple's research involvement in all aspects of obesity—basic and clinical research, epidemiology and outcome studies involving adult and pediatric patients—as well as for launching important outreach programs in local communities and school systems. CORE will complement Temple's large bariatric surgery program.

"Our vision is to link faculty across various schools and colleges with obesity-related interests, or whose primary interest is linked to obesity," Dr. Foster said. "If there's any condition that requires a multi-disciplinary approach, it's obesity."

Dr. Foster brought several ongoing NIH grants with him to Temple. He is lead investigator of one clinical trial comparing low-carbohydrate to low-fat diets that also involves the Universities of Colorado and Pennsylvania, and Washington University in St. Louis. A second NIH study involves the effects of weight loss on sleep apnea and includes Penn, the University of Pittsburgh, Brown and Columbia.

A new NIH study will gauge efforts to prevent obesity and reduce diabetes risk in 42 middle schools throughout the country that have a majority of at-risk African-American and/or Latino students.

Dr. Foster is vice president of the North American Association for the Study of Obesity. He is also author of the obesity section of *Encarta*, and co-editor of two books: *Obesity, Growth and Development*, published in 2001; and *Managing Obesity: A Clinical Guide*, 2004.

More Alumni and Faculty in Sports Medicine

Our article in the last *Temple Medicine* about alumni and faculty sports medicine experts connected with professional teams (both now and in the past) prompted calls and emails about a number of people who should have been on our original list:

Gregory Altman, MD '91
Pittsburgh Pirates

Alfred Bove, MD '66, PhD '70
Chief of Cardiology, TUSM
Philadelphia 76ers

Brian M. Gee, MD '95
Los Angeles Kings hockey team

Mark Harwood, MD '97
Philadelphia Phillies

John D. Kelly, MD
Professor of Orthopedic
Surgery, Temple
Philadelphia Flyers

Ray A. Moyer, MD
Professor of Orthopedic Surgery
Philadelphia 76ers
Temple University Owls

Craig Pearson, MD '68
Philadelphia Eagles, Oakland A's,
Los Angeles Dodgers, California
Angels, Houston Astros, Seattle
Mariners, Chicago Cubs

Joseph Thoder, MD '83
Chair, Orthopedic Surgery, Temple
Philadelphia Flyers

Peter Vitanzo, Jr., MD '96
Philadelphia Phillies

Michael Weinik, DO-Res '89,
Professor of Physical Medicine and
Rehabilitation at Temple, Philadelphia
Flyers, Philadelphia Eagles,
Philadelphia Phantoms, Philadelphia
Rage, Philadelphia Kixx, and U.S.
Rowing Team

John Wolf, MD '62
Philadelphia Flyers, Philadelphia 76ers

Sapienza Gets Grant to Study Link between Fertility Treatment and Genetic Defects

The NIH has awarded a five-year, \$2.3 million grant to **Carmen Sapienza, PhD**, Professor of Pathology and Laboratory Medicine at Temple, to study the link between in vitro fertilization (IVF), Angelman syndrome (a genetic disorder affecting an estimated one in 15,000–20,000 children), and other defects that affect how DNA is interpreted by cells.

Approximately one in 10 couples who are infertile turn to assisted reproductive technology, and more than one million children have been conceived through IVF. According to Dr. Sapienza, despite the many reports on the safety of such procedures, there have been a small number of recent reports suggesting that children conceived via assisted reproductive technology may be at increased risk for rare genetic syndromes, including Angelman syndrome. These genetic syndromes are related to defects in genome imprinting, which is the parents' biological influence on an offspring's genes.

Dr. Sapienza, who is also Associate Director of the Fels Institute for Cancer Research and Molecular Biology, hopes to determine whether any aspect of infertility treatment increases the possibility of these defects being passed on from parents to children.

IBC's New Center for Cardiology Research

Philadelphia based Independence Blue Cross has funded a new research center in the new medical school building that will be dedicated to cardiology research and will be occupied by **Dr. Houser** and team. See page 21 for additional information.

Blebea Promotes GORE TAG

John Blebea, MD, Chief of Vascular Surgery and Professor of Surgery at Temple, reports on the efficacy of the GORE TAG endograft, a new FDA-approved device that enables thoracic aortic aneurysms to be repaired with greater ease and less risk.

Positioned through a small incision made in the patient's groin and fed through the vessel to the diseased area, the device is a tube-shaped stent that seals the weakened area, providing a safer, less invasive alternative to open surgery, dramatically reducing risk of complications. Patients undergoing traditional surgery have higher risk for major blood loss, pneumonia, and paralysis. Moreover, many patients with complex pre-existing conditions are not good candidates for invasive surgery.

The GORE TAG seals off the aneurysm by relining the vessel, making a new path for blood flow, explains Dr. Blebea. It remains in the aorta permanently through use of a metal stent, creating a tight seal against the aortic wall, providing excellent protection from rupture of the aneurysm.

Most patients can be home in 24 hours and can return to normal activity in half the time they would with open surgical treatment. With the traditional procedure, patients could typically expect a five-day hospital stay.

"Use of this technology may be expanded to manage a variety of challenging aortic diseases, offering new hope for improved results over the current treatment," says Dr. Blebea.

Approximately 15,000 people are diagnosed each year with aortic aneurysm.

25-Year Faculty List

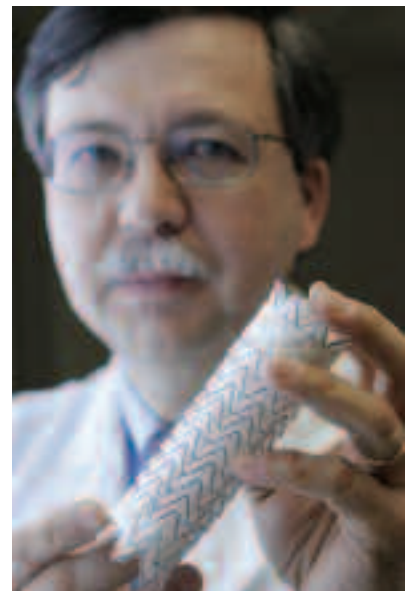
In the last *Temple Medicine*, we missed the following faculty who belong to the 25-year club at Temple:

Steven Berney, MD
(Chief, Rheumatology)

Robert Fisher, MD
(Professor of Medicine,
Gastroenterology)

Byungse Suh, MD, PhD
(Professor of Infectious Diseases)

Michael Sirover, PhD
(Professor of Pharmacology)



John Blebea, MD

Fekete Named Chief

Thomas Fekete, MD, Professor of Medicine and faculty member since 1984, has been appointed Chief of Infectious Diseases at Temple.

In his new role, Dr. Fekete will oversee the clinical, educational, and research activities of the Infectious Diseases section, which includes 10 physicians and two support staff who provide consults for inpatients at Temple University Hospital and Fox Chase Cancer Center; manage the infection-control operations of Temple University Hospital; operate outpatient and travel clinics; and maintain special information related to potential natural pandemic or bioterrorism events.

A cum laude graduate of Princeton, Dr. Fekete earned his medical degree from Tufts, completed his internship and residency at Rush-Presbyterian-St. Luke's, and fellowships in Infectious Diseases and Clinical Pharmacology at the University of Chicago. He has authored or contributed to scores of articles in high-impact professional journals, has served as Principal Investigator on dozens of research studies related to antibiotic susceptibilities and antimicrobial research; and has lectured around the world. He is a member of the Alpha Omega Alpha Society, a Fellow of the American College of Physicians, and has earned many distinguished awards, including the 2005 "Temple Great Teacher Award."

Dr. Fekete succeeds Bennett Lorber, MD, who has stepped down from the role but who will continue to serve on the faculty.



Temple Briefs Biotech and Pharma Leaders on Research Growth



To spur new partnerships and showcase Temple's burgeoning biomedical research activity and expertise, School of Medicine alumnus and Board of Visitors Chair **Frank Baldino, PhD '80**, Chairman and CEO of Cephalon, Inc., hosted a breakfast for Philadelphia area industry leaders with **Dean Daly**.

Attendees from pharmaceutical companies, biotechnology firms, and government and professional organizations were briefed on the ways in which Temple's research enterprise can serve as a catalyst for the growth of the biosciences in the region.

Dean Daly explained that the School of Medicine is committed to research growth and innovation. Star scientists are joining Temple from throughout the region and across the country. Over the past three years, the school's clinical faculty has grown by 29 percent, and its basic science faculty by 24 percent, and millions of dollars have been spent to construct and renovate research labs. The number of research centers has doubled, and plans for brand-new centers, such as the Center for Clinical Translational Research, are underway.

The University's research infrastructure has also been fortified. Its Office of Clinical Trials (OCT) has significantly streamlined processes for rapid clinical trial start-up; a 14-day Institutional Review Board (IRB) process is now in place; master contract agreements have been established with eight pharmaceutical companies, and more are planned. Temple's study participant recruitment rate is double that of other academic centers in Philadelphia. Currently, Temple is running 200 clinical trials, twice the number of just three years ago.

"Industry watches how quickly we can put together a contract. And if they believe we can get the job done well, they're more likely to work with us again," said **Kenneth J. Soprano, PhD**, Temple's Vice President for Research and Graduate Studies.

In the 1970s and into the mid-1980s, Temple was a vital national research university—ranking among the top 100 institutions in the United States. But during the 1990s, its ranking declined sharply. Today, Temple ranks 133rd out of 599 schools. Significant effort is being made to reverse this trend, a top priority of the University administration.

The new medical school building, slated to open in 2009, will open up nearly 158,000 square feet of additional research space and allow for the recruitment of nearly 100 new principal investigators, as well as entire research teams. In the meantime, existing research space has been renovated and updated, allowing the productivity of faculty members, already outstanding, to grow.

"Temple is a new model for medical education and medical research," said Dr. Baldino.

Ziskin Studies Soviet Technology from Cold War

Marvin Ziskin, MD '62, Professor of Radiology and Medical Physics at the School of Medicine, has been awarded a \$4 million NIH grant to study millimeter wave therapy, a Soviet technology developed during the Cold War to keep short-range military communications secure. Dr. Ziskin and team are the only group in the United States investigating this alternative therapy with support from the NIH's Center for Alternative and Complementary Medicine.

While largely unknown in the West, millimeter wave therapy, which directs a low-intensity electromagnetic beam to the skin, has been used for more than 25 years in Eastern Europe, where it is credited with alleviating more than 50 different conditions ranging from heart disease to skin wounds to cancer. Experts there believe that the waves boost the immune system, act as an anti-inflammatory, and provide sedation and pain relief, all with virtually no side effects.

Dr. Ziskin first encountered the therapy in the early 1990s on a trip to the former Soviet Union with **Richard J. Fox**, then the chair of Temple University's Board of Trustees. Convinced of the value of millimeter wave therapy, Mr. Fox funded the establishment of the Center for Biomedical Physics at Temple in 1992. Dr. Ziskin remained intrigued but skeptical.

"Although there were many studies of millimeter wave therapy in the Russian literature, their research doesn't go through the same scrutiny as ours," he said.

During the next decade, Dr. Ziskin and team subjected the technology to critical scientific evaluation, learning how millimeter waves affected biological conditions and uncovering any possible undocumented side effects. Numerous studies, including two supported by the NIH, eventually convinced Dr. Ziskin that the therapy could one day be used in Western medicine.

"We found that millimeter waves reduce pain in laboratory animals, stimulate the immune system, and slow the progression of skin melanomas, without damage to the skin or other harmful side effects. It's a painless, non-invasive, easily tolerated therapy," he said.

The new NIH grant funds three major projects. The first examines how millimeter waves interact with the skin (results could help determine the best amount and frequency of millimeter waves to deliver for different conditions). The second project is looking at the mechanisms by which millimeter waves and drugs modulate the immune system (findings might lead to improvements in the efficacy and tolerability of chemotherapy). The third will investigate the ability of millimeter wave treatment to relieve nerve pain and intense itching.



Radiology and medical physics professor Marvin Ziskin, MD '62 (left), and researcher Alexander Radzievsky operate a millimeter wave device, a Soviet communications technology that they believe may have therapeutic benefits for hard-to-treat conditions

Affiliation Agreement Signed with Schools in Korea and Japan



Christopher Loftus, MD, and Dean Daly with Yasuo Ikeda, MD, Dean of Keio University School of Medicine, and Takeshi Kawase, MD, Chairman, Keio University Department of Neurosurgery



Dean Daly with Kyu-Chang Wang, MD, PhD, Dean of Seoul National University College of Medicine

“Medicine, science and education are global pursuits,” said Dean Daly, announcing that Temple has established two new international educational affiliations: One with Keio University School of Medicine (Tokyo, Japan) and the other with Seoul National University College of Medicine (Seoul, South Korea). The agreements create a framework for academic and clinical exchange and enrichment for Temple and the overseas schools to share.

In addition to encouraging the development of joint research projects and educational activities, the agreements were established to promote the exchange of information. Instructional and clinical methodologies and results will be shared. Invitations to lectures,

conferences and symposia will be extended. Publications and research findings will be transmitted. “While the internet and video conferencing are always great ways to connect, there’s really no substitute for being there,” says Dean Daly, noting that all three schools hope to see students and faculty take advantage of the opportunity to travel overseas and benefit from the affiliations in person.

Christopher Loftus, MD, Assistant Dean for International Affiliations and Chair of Neurosurgery at Temple, worked with Dean Daly and officials at Keio and Seoul National University to spearhead both agreements. He will also serve as the point person for the program at Temple. Like the dean, Dr.

Loftus is delighted to help Temple University School of Medicine expand its global reach. “All three institutions will benefit from an open intellectual exchange that is both scientific and cultural,” he says.

Located in central Tokyo, not far from Temple University’s campus in Japan, Keio University Medical School was founded in 1917 and is a leading institution of Western-style medicine. Seoul National University College of Medicine, located in eastern Seoul and founded in 1879, is likewise esteemed as one of the premier medical schools in the Republic of Korea.

For more information about the affiliations, contact Dr. Loftus at 215-707-9747 or cloftus@temple.edu

Fourth Clinical Campus Added

Geisinger Medical Center in Danville, Pa., has become the fourth clinical education campus for the School of Medicine, joining Crozer-Chester Medical Center, St. Luke’s Hospital and Western Pennsylvania Hospital. Temple medical students can elect to do all of their required rotations at one of the clinical campuses, allowing them to live and work in one location during their entire third and fourth years of medical school.

“The development of a clinical campus at Geisinger Medical Center further enriches the breadth and depth of the clinical experiences that we can offer our students. Geisinger is an outstanding tertiary/quaternary care institution in a setting very different from Philadelphia. Our students who spend time there will benefit greatly from the experience.” said **Stephen Permut, M.D., J.D.**, Assistant Dean, Academic Affiliations and Chair of Family and Community Medicine, at the School of Medicine.

“We want to keep more medical school graduates in Pennsylvania, notes Linda Famiglio, MD, associate chief medical officer, academic affairs at Geisinger.” If students train in a rural area they are more likely to practice in a rural area.”

Founded in 1915, Geisinger is a physician-led healthcare system, dedicated to healthcare, education, research and service spanning 40 counties of 20,000 square miles and serving 2.5 million people.

Neurovirology Team Finds St. John's Wort Protein Suppresses HIV-1 Gene

According to researchers at the School of Medicine's Center for Neurovirology (CNV), a novel protein, p27SJ, extracted from a callus culture of the St. John's wort plant, suppresses HIV-1 expression and inhibits its replication. Their findings were recently published in *Gene Therapy*.

Kamel Khalili, PhD, Chair of Neuroscience and Director of the CNV and the study's lead author, said that he and the team were originally examining plant extracts from St. John's wort to see if they had any effect on cell growth or the behavior of brain cells in vitro. "We looked to see whether these plant extracts had any anti-viral

activity," Dr. Khalili said, "and soon discovered that the plant extract inhibited HIV-1 gene expression and replication in infected cells."

The team sought to isolate the protein from the extract responsible for the anti-viral activity and, after identifying the protein, cloned the gene, which they realized was a novel protein, named p27SJ. The researchers then were able to identify the molecular mechanism by which the protein suppresses HIV-1 gene expression and replication. It is the expression of the viral gene and the replication of the viral genome that leads to the development of AIDS in HIV-infected individuals.

"Our studies indicate that p27SJ has the capacity to inhibit expression of the HIV-1 gene by interacting with both cellular proteins and viral proteins," Dr. Khalili said. "Since HIV-1 gene expression relies heavily on these factors, p27SJ can block viral replication by interfering with the proteins recruited by HIV-1 to increase viral gene expression." (Dr. Khalili strongly emphasized that they do not know if the p27SJ protein they discovered is present in the St. John's wort preparations currently sold as dietary supplements.)

The study, which was partially funded by the NIH, was performed in collaboration with Yerevan State University in Armenia.

Houser Investigates Stem Cells for Heart Failure



With a \$1.7 million grant from NIH, **Steven Houser, PhD '78**, Interim Chair, Professor of Physiology, and Director of Temple's Cardiovascular Research Center, has joined forces with Piero Anversa, PhD, Professor of Medicine and Director of the Cardiovascular Institute at New York Medical College, to research the role stem cells might play in combating congestive heart failure (CHF).

Dr. Anversa, who has been on the forefront of stem cell research for the past five years, has suggested that heart cells undergo an ongoing turnover fueled by cardiac stem cells. Recent studies he published in *Nature* and in the Proceedings of the National Academy of Sciences identified cardiac stem cells in animal models that repaired tissue damaged by a heart attack.

Separately, Dr. Houser has been studying how the heart enlarges under the stress of hypertensive diseases that can lead to congestive heart failure. Heart muscle mass increases and the chambers stretch in a vain attempt to increase contracting power. While part of the enlargement is attributable to increased muscle, the question of how the chambers grow is less certain.

The traditional view holds that cardiac cells grow larger to accommodate the increased demand, but Drs. Houser and Anversa developed a different theory: Spurred by the cardiac stem cells, cardiomyocytes increase their numbers in response to the heart's traumatic condition. "It was striking

that, with hypertension, there were actually more cardiomyocytes than were originally lost," Dr. Houser said. "New myocytes were forming in excess of the cells that were dying."

The new NIH grant will enable Drs. Houser and Anversa to determine whether there are autologous stem cells in the heart. After inducing hypertension in an animal model with a distressed heart, they will study the heart tissue and count cells, first in the normal heart and then in the model. If there are more cardiomyocytes in the stressed heart as opposed to simply larger cells, they will be able to conclude that stem cells had a hand in the reparative attempt. If this proves correct, the implications for treatment of heart disease are profound.

"We've made a tremendous impact on cardiovascular diseases, such as CHF, but what we need to do now is to reverse this disease rather than just slow its progression."

Dr. Houser has studied the molecular biology of heart cells for 30 years. CHF afflicts 4.8 million Americans.

New Elective in Ethics at Medical School



Richard Close, MD '72, with his daughter Anne, Class of 2009

Medical students at Temple worked with the Dean's Office, the Temple Hospital Ethics Committee, and Alumni Association Board Member **Richard Close, MD '72**, to launch a new elective in medical ethics last year. The course featured an impressive roster of speakers and guests lecturers, including **Dr. Arthur Caplan**, Chair of Medical Ethics at the University of Pennsylvania, and **Calvin Johnson, MD**, Pennsylvania Secretary of Health, along with alumni and faculty with diverse perspectives on the topic.

Kenji Saito and **David Ezon** of the class of 2008 spearheaded course development, along with eight other medical students, enlisting the help of Dr. Close, a neurosurgeon based in Reading, Pa. Their goal was to create a platform to focus on ethics, helping to broaden students' awareness of the importance and complexity of ethical issues in medicine.

Mr. Ezon says, "As future physicians, we must prepare ourselves to confront the tough bioethical questions that will arise. We must take the lead in tackling these issues to procure the most equitable outcome for our society." To this end, he and his classmates assembled a roster of speakers to address a wide array of ethics-related topics, including informed consent, genetic counseling, and death and dying. At each event

students discussed and debated their viewpoints on everything from tort reform to religious tenets that interplay with ethical queries.

One speaker was Dr. Close, himself. Immediate past President of the Keystone Chapter of the American College of Surgeons, Dr. Close serves on the staffs of the Reading Hospital Medical Center and St. Joseph Hospital. He is the former Chief of Neurosurgery, Dwight D. Eisenhower Army Medical Hospital, and a former faculty member of the Medical College of Georgia.

With his talk, "Ethical Observations of a Surgeon: Doing the Right Thing at the Right Time," Dr. Close brought three cases to the students, cases he and colleagues have handled in recent years. One involved an uninsured patient with a brain tumor whose health and welfare fell into the hands of an organization that wanted to help her, but with many strings attached that put patient, surgeon and hospital in a precarious spot, legally, financially and ethically. The deeper Dr. Close and the students delved into the details of the case, the murkier the "right" path became. "Like it or not," said Dr. Close to the students, "A lot of you are going to find yourselves in situations that require you to make tough decisions. If you want to win a popularity contest, you might want to rethink your profession."

The Medical Ethics Society at Temple is planning a new curriculum for next semester. Led by the club's new chairs, **Christa Jillard** and **Amy Ost** of the Class of 2009, the course will include lectures, discussion forums, and interactive on-the-wards sessions with physicians.

Kenji Saito, of the Class of 2008, who is pursuing a dual degree in medicine and law at Temple, received his undergraduate degree in bioethics at Penn and plans to help "our healthcare system sustain a continually growing demand for an economic plan that

will not compromise the best patient care possible."

Acknowledging the frictions that can arise between physicians and lawyers, he explains that law school faculty and students will take part in the medical ethics roster this year. "Hopefully, by working together during training, we will foster better working relationships," he says, "but most importantly, aim to provide the best and compassionate care for our future patients."

For more information, email medicaethics@temple.edu or visit www.temple.edu/ethics.

Board of Visitors Grows

Six prominent alumni and business and community leaders have joined the School of Medicine's Board of Visitors, a high-level advisory board that provides guidance and support to Dean Daly and his senior staff regarding key issues and strategic direction for the School of Medicine.

Dean Daly's enthusiasm about the board, founded in 2004, continues to grow. "I have enormous respect for each member. The value of their advice and support simply cannot be overstated," he says.

New members are: **William Giles**, Chair of the Philadelphia Phillies; **Gerald M. Lemole, MD '62**, Chief of Cardiovascular Surgery, Christiana Care Health Services (Huntingdon Valley, Pa.); **Daniel Lyons, MD '76**, Sr. Vice President, Government Programs, Independence Blue Cross; **Ruth E. Perry, MD '82**, Director of Global Product Integrity, Rohm & Haas Co. (Croydon, Pa.); **Frederick A. Simeone, MD '60**, Simeone Center for Neurosurgery (Philadelphia, Pa.); **Glenn D. Steele, Jr., MD, PhD**, President and CEO, Geisinger Health System (Danville, Pa.); and **Paul R. Hermany, MD '82**, Chief of

Cardiology, Grand View Hospital (Sellersville, Pa.), President of the School of Medicine's Alumni Association; and the Honorable **Louise C. Bishop (D)**, member of the Pennsylvania House of Representatives. **Frank Baldino, Jr., PhD '80**, Chair and CEO, Cephalon, Inc., based in Frazer, Pa., is Board of Visitors Chair. Other members are: **C. Hilyard Barr**, Friend of the Class of 1948 (La Canada, Calif.); **Kenneth Chien, MD '80, PhD '83**, Director, Cardiovascular Research at Massachusetts General Hospital in Boston, Mass.; **Sandra Harmon-Weiss, MD '74**, former head of Government Programs, Aetna; **Leonard S. Jacob, MD, PhD '75**, Former CEO/consultant, InKine Pharmaceutical Company, Inc., (Villanova, Pa.); **Solomon Luo, MD, Res '86**, ophthalmologist in private practice in Pottsville, Pa.; **Gerald Miller, President and CEO**, Crozer-Keystone Health System (Springfield, Pa.); **Michael Miller**, Managing Director, Planning and Development, The Vanguard Group (Valley Forge, Pa.); **Donald Parks, MD**, internist in private practice (Philadelphia, Pa.); **Lindsay Rosenwald, MD '83**, President and CEO, Paramount Biocapital, Inc. (New York, N.Y.); **E. Ronald Salvitti, MD '63**, ophthalmologist in private practice in Washington, Pa.; **Mitchel Sayare, PhD '75**, President, Chairman and CEO, Immunogen, Inc., (Cambridge, Mass.); and **Lucien Trigiano, MD '52**, consultant, Physical Medicine and Rehabilitation in Las Vegas, Nev.

CSAR Awarded New NIH Grant



Martin Adler, PhD, and Toby Eisenstein, PhD

The Center for Substance Abuse and Research (CSAR) received a \$4.7 million NIH grant from the National Institute of Drug Abuse to continue its groundbreaking work on the mechanisms of addiction and how addictive substances interact with the nervous and immune systems.

“Eventually, as in the case of marijuana or morphine, the hope is to block the negative effects of the drugs while enhancing the positive, such as pain management,” said **Martin Adler, PhD**, Laura H. Carnell Professor of Pharmacology and CSAR Director.

Since addicts rarely ingest a single drug, many of the center's investigations turn on how multiple drugs taken simultaneously affect the body. Combining substances like alcohol, heroin and cocaine sets off complex internal biological changes, which can include immunosuppression, problems in regulating body temperature, and shifts in pain perception.

One novel explanation about why these reactions occur lies with chemokines, small signaling proteins that are produced by the brain and the immune system. CSAR scientists are studying how chemokines impact the activities of drugs in the nervous and immune systems, significantly altering the body's natural responses. For example,

CSAR researchers are examining the role of opioids and their interaction with chemokines to understand why one-third of those infected with HIV are also intravenous drug users.

“We asked ourselves whether the coincidence is due solely to use of contaminated needles, or whether the drugs themselves are also to blame,” said **Toby Eisenstein, PhD**, Co-Director of CSAR, noting that findings by CSAR scientists **Drs. Thomas Rogers, Lee Liu-Chen and Earl Henderson** show that the drugs alter the chemokine receptors for the HIV/AIDS virus, in some conditions, enhancing HIV replication.

CSAR researchers have also shown that certain chemokines can block the pain-relieving effects of morphine on the body. These findings provide clues as to how scientists might eventually fine-tune drugs, modifying both pleasurable and problematic effects of legal and illegal drugs. Other ongoing studies are measuring the impact of drug withdrawal on the human immune response. Symptoms such as chills or shakes might actually be connected to immunosuppression, Dr. Eisenstein said. Examining this brain-immune system connection may lead to improvements in the ability to anticipate and treat symptoms of withdrawal.

The uptick in interest in chemokines as a link between the brain and immune system has led Dr. Adler to theorize that the proteins will eventually be considered on a par with neurotransmitters, the discovery of which revolutionized treatment for depression. “In many ways, we're just beginning,” says Dr. Adler. “Perhaps in seven to eight years we will understand the connections. But I think we're onto something big.”



Medical and nursing students respond as a team to a simulated “code blue” at Temple’s Institute for Clinical Simulation and Patient Safety

Simulation Training Institute Accredited

Temple’s Institute for Clinical Simulation and Patient Safety has been accredited as a Level I Education Institute by the American College of Surgeons (ACS). It is one of only seven nationwide—and the only in the Mid-Atlantic region—to received the three-year accreditation.

ACS-accredited facilities meet the highest level of quality and standards in surgical education, offering surgeons, surgical residents, medical students, and members of the surgical team a spectrum of educational opportunities to build and maintain skills as well as to learn new procedures and emerging technologies.

Temple’s Institute, housed in the former dental school building at the Health Sciences Center, is a \$3 million, 15,000-square-foot facility encompassing both simulation and standardized patient programs that serve Temple’s School of Medicine, Health System and College of Health Professions and groups outside of Temple, such as first responders, firefighters and police.

The other ACS-accredited facilities are located at the Beth Israel Deaconess Medical Center (Boston, Mass.); the University of British Columbia (Vancouver, B.C.); the University of California-Irvine School of Medicine (Orange, Calif.); the University of New Mexico Health Science Center (Albuquerque, N.M.); the University of Texas Southwestern Medical Center (Dallas, Texas), and the University of Washington (Seattle, Wash.).

Dean’s Staff Update

Eric Abel, who has been Director of Development at the School of Medicine for the past three years, has been named Assistant Dean, Development and Alumni Affairs. In this capacity he will oversee the school’s fund-raising and alumni relations programs. Mr. Abel has wide-ranging experience in the academic, healthcare, and public sectors—having served as Director of Development at St. Luke’s Hospital in Quakertown, Pa., and Senior Development Officer at Lehigh University, among other professional posts. Irv Hurwitz, who served the school admirably as Assistant Dean for Development and Alumni for the past four years, accepted a position with a cultural organization in Philadelphia.

Stephen Houser, PhD ’78, is now Interim Chair of the Department of Physiology. Dr. Houser is Professor of Physiology, Senior Associate Dean for Research, and Director of the Cardiac Research Center. He will continue in this latter position and will serve as Department Chair pending a national search. He will continue to serve as Senior Associate Dean until a successor, interim or permanent, is identified.

Richard Kozera, MD, has been named Executive Associate Dean. In this capacity, he will be responsible for managing reviews of the School by both the University and Liaison Committee on Medical Education and for the School’s strategic plan. He will continue to provide oversight for certain units of the Dean’s staff and assist Dean Daly with special projects. Dr. Kozera has been a member of the Dean’s staff at Temple for 19 years and has thrice served as Acting Dean.

Ronald Tuma, PhD ’75, has been named Senior Associate Dean for Education. Dr. Tuma has been Chair of Physiology for the past 13 years and has also served the School as Associate Dean for Admissions and Senior Associate Dean for Research. In his new role he will oversee medical and graduate student education, continuing medical education, educational affiliates, and instructional support, including clinical skills and simulation.

ALUMNI AND FACULTY

Honors and Awards

BAIL AWARDED DISTINGUISHED CROSS



Vice President Cheney awards the medal to Dr. Bail

Bernard W. Bail, MD '52, a psychiatrist from Beverly Hills, Calif., has been honored with the Distinguished Service Cross of the United States, awarded to a person who, while serving in any capacity with the U.S. Army, exhibited extraordinary heroism. Second only to the Medal of Honor for recognizing valor in combat, it was awarded to him by Vice President Dick Cheney.

After his service as lieutenant in World War II as the lead navigator on B-24 bombers, Dr. Bail received several medals. But the Distinguished Service Cross is special in that it has come more than 60 years after the fact.

On June 5, 1944, while serving on a mission as lead radar navigator on a heavy bombardment attack against defended enemy coastal positions near Boulogno-Sur-Mer, France, Lieutenant Bail's aircraft was hit by enemy fire, which killed the pilot and wounded several crewmen, including the command pilot.

The aircraft rapidly lost altitude, and the crew was ordered to bail out. Lieutenant Bail did not bail out. He stayed with the command pilot and applied a tourniquet to his leg, enabling him to recover from shock and take control of the plane, which otherwise would have crashed into an English village. Thus, Dr. Bail is credited with saving many lives.

SHTASEL NAMED DISTINGUISHED FELLOW

Derri Shtasel, MD '79, MPH, Boston, Mass., has been named a Distinguished Fellow of the American Psychiatric Association (APA). Dr. Shtasel is Chief of Psychiatry (Adult Division) at Cambridge Health Alliance, and Associate Clinical Professor of Psychiatry at Harvard Medical School.

Dr. Shtasel's career has focused on developing service delivery programs for people with severe and persistent mental illness. She has provided leadership in medical student and residency education over many years. Dr. Shtasel is a past recipient of the Exemplary Psychiatrist Award of NAMI.

Cambridge Health Alliance is a health system that serves Cambridge, Somerville, Everett, Revere, and Boston's Metro-North communities. It includes three hospitals, more than 20 primary care practices, the Cambridge Public Health Department, and the Network Health plan.

DEAN DALY NAMED DONAHOO PROFESSOR

John Daly, MD '73, Dean of the School of Medicine, has been named the Harry C. Donahoo Professor of Surgery at Temple.

An internationally renowned surgeon whose clinical work and research interests are in the fields of surgical oncology, metabolism and nutrition, Dr. Daly, dean since 2002, has expertise in a wide range of issues including physician competency and liability, credentialing and board certification, surgical education and research, public policy and long-range planning, and technology assessment.

This named professorship recognizes Dr. Daly's contributions as a clinician, researcher, scholar, teacher and leader.

The professorship was endowed by the late **Harry C.**

Donahoo, MD '41, an obstetrician and generous School of Medicine supporter.

GOLDBERG GETS LINDBACK AWARD



Amy Goldberg, MD (Res-Surg '92) is Professor of Surgery and Surgery Residency Program Director at Temple. She also directs Temple's trauma center, one of the busiest in the Philadelphia region, plus maintains a full roster of private patients.

"But no matter how busy she is," says a colleague, "she always finds time for medical students and residents." It's this kind of dedication that earned her a 2006 Lindback Award for Distinguished Teaching.

A graduate of Temple's surgery residency and a faculty member since 1993, Dr. Goldberg has become an outstanding teacher. Students rave about the spirit, humor, and energy that infuse her teaching, whether during emergency surgery or on hospital rounds.

"One of the best things about working with Dr. Goldberg," one student said, "is that she always knows what her students are doing and how they are doing. She teaches, guides and protects us, all the while expecting the best of us. We don't want to ever let her down."

A fellow faculty member attributes her success as a teacher to the fact that she allows her personality to come through in her teaching. "It's important for me to make a connection and get to know students personally," Dr. Goldberg says.

"Teaching is so much of my purpose and mission. When I was growing up, I wanted to be a coach. Coaches make you do more than you ever thought you could," she said, "And now, I am a coach, letting students know I believe in them. Students have to know you have their best interest in mind, so that when you push them, they understand."

Dr. Goldberg's students also admire her way with patients, who, she says, must always come first. "Anyone who has rounded with Dr. Goldberg cannot help but be moved and inspired by the compassionate, honest way she speaks to patients," said a resident. "With her technical proficiency in the operating room and dedication to education, Dr. Goldberg is not only inspiring but captivating."

A fellow of the American College of Surgeons and the College of Physicians of Philadelphia, Dr. Goldberg was inducted as a charter member of the Academy of Distinguished Educators in Medicine in 2004. In addition to the Lindback award, she is the recipient of a dozen other teaching awards at Temple, including the Golden Apple, the W. Emory Burnett Award for Teaching Excellence, and the Russell C. Moses Memorial award for excellence in clinical training.

FINE NAMED STONY BROOK DEAN



Richard N. Fine, MD '62, has been named Dean of Stony Brook University School of Medicine in Stony Brook, N.Y. A nationally renowned pediatric nephrologist and Chair of Stony Brook's Department of Pediatrics, Dr. Fine has been on Stony Brook's faculty since 1991. Before that he was Professor of Pediatrics at the University of Southern California.

Internationally recognized for his expertise in the management of children who require renal transplantation, Dr. Fine has lectured and published extensively on the clinical issues surrounding renal transplantation in children. He helped establish emerging modalities of pediatric dialysis and renal transplantation as well as peritoneal dialysis as an alternative therapy for children with End-Stage Renal Disease (ESRD). His clinical research studies have involved the use of recombinant human growth hormone to improve growth retardation in pediatric renal allograft recipients.

Dr. Fine has co-authored six textbooks dealing with chronic renal insufficiency and ESRD in children, and is editor-in-chief of *Pediatric Transplantation*. He is also President of the American Society of Transplantation, the largest organization of transplant professionals in North America, and an officer of the International Pediatric Transplant Association and the North American Pediatric Transplant Cooperative Study. Dr. Fine is a Fellow of the American Board of Pediatrics and the sub-Board of Pediatric Nephrology.

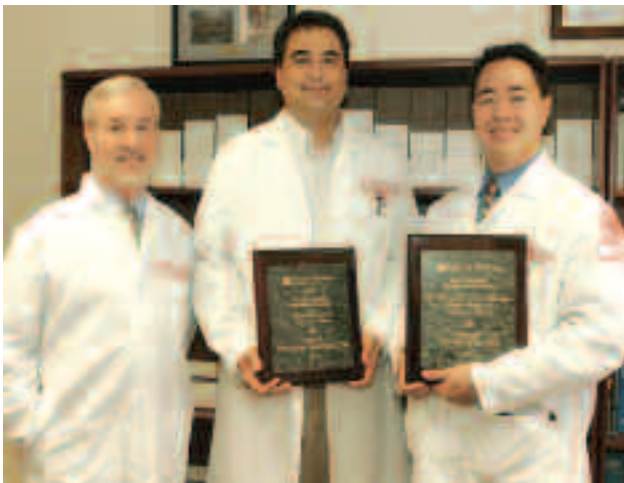
TWO MEDICINE FACULTY RECEIVE RESEARCH AWARDS

Temple pulmonary researchers **Victor Kim, MD**, and **Nathaniel Marchetti, DO**, have received Department of Medicine faculty research awards for 2006.

Created last year by **Joel Richter, MD**, Chair, the awards are designed to assist faculty in pursuing externally funded research careers. "The award provides a bridge from the post-graduate training to the time when physician-scientists become ready to pursue their own NIH funding," he says, explaining that, each year, two to three faculty are selected to receive the two-year, \$150,000 grant to support their research and that 50 percent of each awardee's time is reserved for research.

Dr. Marchetti, Assistant Professor, received the Faculty Development Research Award. He will use it to evaluate patients with severe COPD undergoing lung volume reduction surgery to help answer questions about which populations are most prone to dynamic hyperinflation.

Dr. Kim, also Assistant Professor, received the Evans Foundation Faculty Development Research Award, which will support his research on chronic small airway inflammation and whether it induces mucous production in patients suffering from severe COPD. He will also investigate whether inhaled steroids are effective weapons against this problem.



Joel Richter, MD, Chair of Medicine (left), with awardees Victor Kim, MD (right) and Nathaniel Marchetti, DO

HILL BECOMES HALL-OF-FAMER, SNYDER HONORED



Washington Hill, MD '65, of Sarasota, Fla. and a well-known perinatologist, was inducted into his undergraduate alma mater's Hall of Distinguished Alumni, Rutgers University. The hall recognizes alumni for superior achievements in their professional and civic lives. Dr. Hill is Chair of Obstetrics and Gynecology and Director of Maternal-Fetal Medicine at Sarasota Memorial Hospital. He is also on faculty at Florida State University and the University of South Florida.

A leading expert on maternal-fetal medicine, Dr. Hill has held leadership posts at several medical schools, including the University of California at Davis, Meharry Medical College, and Vanderbilt University, where he conducted research on the early detection of preterm birth, HIV in pregnancy, multiple births, and perinatal education.

A frequent speaker for the March of Dimes, Dr. Hill has been a vocal advocate throughout his career for better healthcare for high-risk pregnant women. *Black Enterprise* magazine names him one of the top 100 black physicians in the country.

A fellow of the American College of Gynecology and a diplomat of the American Board of Obstetrics and Gynecology, Dr. Hill sits on the editorial board of the *Southern Medical Journal*, and is author of *Ambulatory Obstetrics* (Lippincott, Williams & Wilkins, 2002).

Another alumnus recently honored by his undergraduate alma mater is **Robert Snyder, MD '76**, Glen Mills, Pa., Adjunct Assistant Professor of Emergency Medicine at Thomas Jefferson University Hospital, who received the Distinguished Alumnus Award of Messiah College, in Grantham, Pa.

In 1995, Dr. Snyder founded International Health Services to teach medical professionals how to integrate faith and medicine, having trained more than 1,600 physicians to date, including those in Hungary, Romania, the United Kingdom, the Netherlands, and Ukraine.

CUNDYS GET CASWELL AWARD

Elsie Cundy, RN, and **Kenneth Cundy, PhD**, Emeritus Professor of Microbiology/Immunology, received the 2006 Martha A. Caswell Award of the Temple University Hospital Auxiliary. The annual award is presented to members who exemplify the Auxiliary's mission of service and commitment to Temple University Hospital and Health System, exhibiting outstanding leadership and devoted service. Long-time members of the Auxiliary (Dr. Cundy is a past president), the Cundys have devoted countless hours of volunteer service on projects large and small. In part, with their involvement, the Auxiliary's million-dollar pledge towards the new Temple University Hospital Ambulatory Care Center was initiated and completed within three years. For more on the Cundys, see page 42.

CUTLER ELECTED ACP GOVERNOR



Charles Cutler, MD '74, Merion, Pa., an internist, has been elected Governor of the Southeastern Pennsylvania Chapter of the American College of Physicians (ACP), the world's largest medical specialty society. In this capacity he will supervise chapter activities, appoint members to local committees, preside at regional meetings, and represent the chapter on the national ACP Board of Governors.

A fellow of the American College of Physicians since 1994, Dr. Cutler is a member of Fornance Physicians, a multi-specialty group based in Norristown, Pa., and associated with Montgomery Hospital. He serves on the boards of the Montgomery County Medical Society and the Pennsylvania Medical Society, also chairing the Pennsylvania Medical Society's delegation to the American Medical Association.

MEDAL NAMED FOR BONAKDARPOUR

The International Skeletal Society (ISS), an interdisciplinary group dedicated to the teaching and treatment of skeletal disease, has renamed an award after Temple faculty member **Akbar Bonakdarpour, MD**, Clinical Professor of Radiology, recognizing his many contributions to skeletal radiology.

The Akbar Bonakdarpour Medal, founded 15 years ago as the Medal of the ISS, is awarded to people who have actively supported the endeavors of society.

MYERS NAMED DISTINGUISHED PROFESSOR



Eugene N. Myers, MD '60, Professor of Otolaryngology at the University of Pittsburgh School of Medicine, has been named a Distinguished Professor of the University, acknowledging his international leadership in otolaryngology during the last 30 years. Dr. Myers also received the Allegheny County (Pennsylvania) Medical Society's 2005 Ralph C. Wilde Award, given to a physician who exemplifies the personal and professional characteristics of the late medical society president for whom the award is named.

HOEPP NAMED NUMBER ONE SURGEON

New Hampshire magazine has conducted several physician peer surveys that name **Lawrence M. Hoepp, MD '73**, Chair of Surgery at Elliot Hospital, in Manchester, New Hampshire, the number one general surgeon and the number one vascular surgeon in the state. Dr. Hoepp was the first surgeon in New Hampshire to achieve board certification in vascular surgery at a non-teaching institution, founded the first vascular laboratory in southern New Hampshire for screening and diagnosis of vascular disease, and in the 1980s pioneered the practice of minimally invasive vascular techniques such as angioplasty, laser treatment for vascular blockages, and stent placement. He was also the first surgeon in southern New Hampshire to perform advanced laproscopic surgery for gastroesophageal disease.

ALLEY AWARDED TEMPLE CERTIFICATE OF HONOR

Albert Alley, MD '64, received Temple University's 2006 Certificate of Honor for the School of Medicine during the annual Founder's celebration. An ophthalmologist in Lebanon, Pa., and Clinical Assistant Professor of Ophthalmology at Penn State University's College of Medicine at the Hershey Medical Center, Dr. Alley is well known both at home and abroad for fighting blindness. The Certificate of Honor recognizes his distinguished commitment to medicine and volunteerism.

In 1990, Dr. Alley founded World Blindness Outreach (WBO), an organization that recruits volunteers and raises money for worldwide surgical eye missions, treating correctable blindness and preventable eye disease in impoverished regions of the world. To date, Dr. Alley and his team have performed more than 5,000 eye surgeries in 20 countries, donated tens of thousands of dollars in medical supplies, and helped train dozens of health professionals.

Fighting blindness is a passion that Dr. Alley shares with his daughter, **Cynthia Alley, MD '00**, now an assistant professor of ophthalmology at Temple. In 2004, the Alleys established an endowed scholarship fund at the School of Medicine for deserving medical students who demonstrate financial need.

Apart from his work with WBO, Dr. Alley volunteers with the Boy Scouts of America and is a board member of Big Brothers and Big Sisters of Lebanon County. He is also a trustee of Good Samaritan Hospital in Lebanon, where he is a former medical staff president.



Certificate of Honor Recipient Albert Alley, MD '64 (center), with Richard J. Kozera, MD, Senior Associate Dean (left), and Alumni Association President Paul Hermany, MD '82

Dr. Alley has received numerous commendations for his commitment to medicine and human service, including the 1997 Humanitarian Service awards from both the Pennsylvania Academy of Ophthalmology and the American Academy of Ophthalmology, in addition to awards from the Big Brothers Association of Philadelphia, the Lebanon Lions Club, the Boy Scouts of America, and Lebanon Valley College.

SHUMAN HONORED



The American Diabetes Association of Southeastern Pennsylvania & Southern New Jersey division honored **Charles Shuman, MD '43**, Emeritus Professor of Medicine at Temple, for his continuing commitment to the fight against diabetes. Philadelphia Eagles quarterback Donovan McNabb and family were honored for their efforts as well.

Class Notes

40s

Henry P. Laughlin, MD '41, *Frederick, Md.*, a retired psychoanalyst, celebrated his 90th birthday in June with a visit from Temple's Chair of Psychiatry, David Baron, DO. He remains active with the community foundation he and his family established. Dr. Laughlin is the namesake and endower of Temple University School of Medicine's Alumnus of the Year Award.

R. Dean Luther, MD '42, is retired from the practice of orthopedics and divides his time between residences in Idaho and Rancho Mirage, California.

Theodore Gerson, MD '45, *Lake Worth, Fla.*, is retired from the practice of urology and enjoying life in Florida.

50s

Robert Carpenter, MD '51, *Claremont, Calif.*, recently organized two missions to Moldova, one of the poorest areas of Eastern Europe, to provide medical care and distribute medicines and supplies.

Richard MacMillan, MD '53, is retired from the practice of internal medicine and enjoys spending time in Mexico and in the deserts and mountains of Arizona.

Richard Fry, MD '54, and **Justine Vaughn, MD '54**, *Gainesville, Fla.*, are both retired. A former faculty member of the University of Florida School of Medicine, Dr. Fry retired from orthopedics in 1998, and Dr. Vaughn most recently served as charter Medical Director of the UpReach Rehabilitation Hospital in Gainesville, and Chief of Rehabilitation Medicine at the regional Veteran's Hospital. They are both active with volunteer endeavors and have been married for nearly 52 years.

Gerald Zatuchni, MD '58, *Tucson, Ariz.*, was a fertility expert in Chicago for many years and now enjoys another passion: painting.

60s

Robert Decker, MD '63, *Palm Beach Gardens, Fla.*, most recently served as director of the neurosurgery residency at Long Island Jewish Hospital in New York, and is now retired from both academic and clinical medicine and dividing his time between his residences in New York and Florida.

Robert Berish, MD '65, *Bethesda, Md.*, an anesthesiologist, recently represented Temple University at the induction of the new president of the Uniformed Services University of the Health Sciences in Bethesda, Md., at the request of Dean Daly and former Temple University President David Adamany.

AT THE CAMPUS KICKOFF FOR THE NEW MEDICAL SCHOOL BUILDING CAMPAIGN:



Neurosurgery faculty Jack Jallo, MD, Devenand Dominique, MD, and Christopher Loftus, MD, Chair



Mark-Allen Taylor, JD, Director of the Temple Health Sciences Center Libraries, awards a basketball autographed by Coach Cheney to employee Tyrana McAllister



Ronald Tuma, PhD '75, Senior Associate Dean, encourages faculty and staff campaign participation

AT THE FACULTY CAMPAIGN KICKOFF FOR THE NEW MEDICAL SCHOOL BUILDING AT THE NATIONAL CONSTITUTION CENTER IN PHILADELPHIA:



Fred Bove, MD '66, PhD '70, Chief of Cardiology



"Ben Franklin" makes a donation to Dean Daly for the new medical school building



Joel Richter, MD, Chair of Medicine, with Steven Houser, PhD '78, Professor of Physiology



Elizabeth Drum, MD '86, with Andrew Herlich, MD, Professor of Anesthesiology and Pediatrics

70s

Robert Walley, MD '66, *Glenshaw, Pa.*, recently retired from his career in anaesthesiology.

Ronald Spark, MD '67, *Tucson, Ariz.*, a pathologist, received the 2006 Tobacco Awareness Volunteer of the Year Award from the Arizona Chapter of the American Lung Association and made the 2006 list of area Top Docs. He is also Physician Director of the Medical Reserve Corps of Southern Arizona.

Robert Hower, MD '72, *Natrona Heights, Pa.*, is Chair of Surgery at Alle Kiski Medical Center and is on staff at Allegheny Hospital, where he has been very active in hospital and medical staff affairs, and is a past medical staff president.

David Brody, MD '73, *Denver, Colo.*, is Medical Director for managed care at Denver Health, overseeing quality improvement, disease management and utilization management activities of Denver Health Medical Plans. Prior to accepting this post, he was Professor of Medicine at Drexel University College of Medicine.

Michael Gross, MD '73, *Doylestown, Pa.*, is Chief Medical Officer at LifeGuard Health, LLC, a dietary supplements company based in Dublin, Pa. An obstetrician/gynecologist by training, Dr. Gross has expertise in health and wellness program design, having played a lead role in the creation of the Health and Wellness Center at Doylestown Hospital in Bucks County, Pa., which has won national awards for consumer-directed health-care. Dr. Gross served as Director of New Business Development for the center and is former National Medical Director for Women's Health, MedPartners.

Gary Brazina, MD '74, *Arvada, Colo.*, is an orthopedic surgeon based at the Centinela Freeman Regional Medical Center in Los Angeles, the official hospital for the Los Angeles Dodgers, Lakers, Clippers, Sparks and the Avengers. Dr. Brazina was previously affiliated with Cedars-Sinai and Century City Hospital in Los Angeles, and has held several teaching positions at the University of California at Los Angeles and the University of California, Irvine School of Medicine.



Toby Eisenstein, PhD, and Joe Meissler of Microbiology and Immunology



Ejiro Eduvie and Latisha Rowe of the Class of 2008



Barbara Kuchan and Karen Burstein from the HSC Library enjoying the entertainment being provided by the emcee for the festivities, Mark-Allen Taylor

AT THE CONWELL SOCIETY RECOGNITION RECEPTION:



Medical Alumni Association Board members Fraser Lewis, MD '66, and Fred Sutliff, MD '46



Classmates Kathleen Love, MD '06, and Corinne Bria, MD '06, with Stephen Permut, MD '72, and Marylene Permut



Alma Finestone and Marc S. Lapayowker, MD '54

80s

Joel Kremer, MD '74, *Albany, N.Y.*, is Chief of Rheumatology, Professor of Medicine, and Director of Research for the Center for Rheumatology at the Albany Medical College. He is a founding member and current president of the Consortium of Rheumatology Researchers of North America.

William Spiegel, MD '79, *Lansdale, Pa.*, a pediatric allergist, is a Senior Physician and Director at Vireo Allergy Center in Philadelphia, which offers sublingual immunotherapy as a preventive treatment for allergic response to pollens, dust mites, molds, etc. He has been involved with 60 clinical research studies and has contributed to approximately 17 articles that have appeared in journals, including *Asthma & Immunology*.

Timothy Hall, MD '82, *New Canaan, Conn.*, is Chair of Surgery at Stamford Hospital in Stamford, Conn. A specialist in general surgery, thoracic surgery, and surgical critical care, Dr. Hall has held teaching positions at the University of Medicine & Dentistry of New Jersey, Robert Wood Johnson Medical School; the University of California at San Francisco; and the Cardiovascular Institute of the University of West Virginia.

Gary Lindenbaum, MD '82, *Media, Pa.*, is Clinical Associate Professor at Jefferson Medical College of Thomas Jefferson University. He was clinical associate professor of surgery at the Drexel University College of Medicine and is former Trauma Division Director and surgical director of intensive care at Crozer Chester Medical Center in Upland, Pa.

Stephen Hahn, MD '84, *Glen Mills, Pa.*, has been appointed the Henry K. Pancoast Professor and Chair of Radiation Oncology at the University of Pennsylvania School of Medicine, where he has been a faculty member for 10 years, having served as Vice Chair and Director of Research for the Department. Dr. Hahn has made important contributions as a clinical and translational investigator in experimental therapeutics

in radiation oncology, including advanced photodynamic therapy, a minimally invasive treatment that uses a photosensitizer and laser light to destroy tumors. He directed the Farnyltransferase Inhibitor Program that launched clinical trials to improve the treatment of lung, head and neck and pancreas cancers through radiation. In 1999, he was honored with Penn's Giulio JD'Angio, MD, Award for Excellence in teaching radiation oncology. He is also a former Senior Investigator at the National Cancer Institute. The late **Morton J. Kligerman, MD '41**, is a former holder of the Pancoast Chair.

AT RECENT DEAN'S SCHOLARSHIP LUNCHEONS:



Dolly Schnall and Nathan Schnall, MD '47, with Class of 1947 scholarship recipient Amy Mondelblatt, MD '06, and Dean Daly



Dr. and Mrs. Ken Cundy with their scholarship recipient Olayemi Ikusika, MD '06



Learner Scholarship recipient Amanda Horn, MD '06, with lead donors Richard Wagner, Lisa Learner Wagner, their son David, and Dean Daly



Enrique Hernandez, MD, Chair of Ob/Gyn, and Neil Brister, MD, PhD '83, Professor of Anaesthesiology



Daniel Dempsey, MD, Chair of Surgery, and former Chair R. Robert Tyson, MD, Res '51



William Reinus, MD, Professor of Diagnostic Imaging, with his wife Terri

90s

Michael Bentz, MD '84, *Madison, Wis.*, is Professor and Chair of Plastic Surgery University of Wisconsin at Madison, where he focuses on plastic and reconstructive surgery for infants and children as well as general reconstruction of the adult trunk, extremities, and head and neck. His research interests include tissue preservation in microvascular surgery and microvascular thrombosis. Dr. Bentz is on the editorial board of *The Internet Journal of Plastic Surgery*. He recently organized a medical mission to Nicaragua.

Karen Thornton, MD '89, *Bronx, N.Y.*, is a Manhattan-based family practitioner specializing in medicine for actors, musicians and other performance artists.

Mark Miller, MD '91, *Charlottesville, Va.*, joined Charlottesville Gastroenterology Associates. He has published research on gastric and small bowel motility.

Louis Renzetti, MD '91, *Verona, N.J.*, is Vice President, Research, Respiratory and Inflammation at Roche Pharmaceuticals, where he focuses on identifying new drug targets and opportunities for the treatment of severe asthma, multiple sclerosis, inflammatory bowel disease and chronic obstructive pulmonary disease. He also manages respiratory disease activities among Roche research organizations in Basel, Switzerland; Nutley, N.J.; Palo Alto, Calif.; and Penzberg, Germany.

Rakesh Shah, MD '93, *Newtown, Pa.*, is known as the "cooking cardiologist" at St. Mary Medical Center in Langhorne, Pa. He has appeared as a guest chef on "Flavors of America," a television show featuring the preparation of heart-healthy dishes, hosted by Chef Jim Coleman.

Jason Foster, MD '94, *Omaha, Neb.*, is a surgical oncologist at Creighton University Medical Center in Omaha.

Ronald Kimmel, MD '94, *Glastonbury, Conn.*, an internist in private practice and Associate Medical Director, St. Francis PHO in Hartford, Conn., where he also serves on the Board of Directors, overseeing hospitalist programs, medical review, membership, and quality and resource management.

Joseph Wiedemer, MD '95, *Stockton, N.J.*, is a family practitioner based at the Hunterdon Medical Center in Hunterdon, N.J. With a special interest in healthcare policy and collaborative care models, he is Executive Editor of the New Jersey Association of Family Practitioners journal, *Perspectives*, and serves as President of the Hunterdon County Medical Society.

Geetika Sood, MD '96, *Philadelphia, Pa.*, is a Clinical Assistant Professor of Medicine at Jefferson Medical College, where she also serves as Associate Program Director, Internal Medicine residency.



Donors and recipients of the Class of 1944 Scholarship (L-R): Bernard Eisenstein, MD '44, Ann Marie Lam '09, Karen Siren '07, Morton Eisenberg, MD '44, and Josef Turner '08, pictured with Dean Daly



Dean's Scholarship recipient Jason Catanzaro '08 and Dean Daly



Recipients of the Class of 1943 Scholarship Esther W. Wong '07 and Melissa Ross, MD '06 with Charles R. Shuman, MD '43

AT THE SCHOLARSHIP RECOGNITION DINNER:



Chan Scholarship Donors Solomon Luo, MD, Res '86, his wife Wendy, with Chan scholarship recipient Mary Staaby, MD '06



Class of 1941 scholarship recipients Stephen Nalbach '07 and Huma Vahora '09 with donors John Hall, MD '41 and Minerva Greenberg



Bedrossian scholarship recipient Robert Rankin of the Class of 2007 with lead donors Edward H. Bedrossian, Jr., MD '78, and Adelle Bedrossian

Lisa Motz, MD '96, Reading, Pa., is a Assistant Professor of Medicine at Temple and a full-time faculty member of the internal medical residency program at The Reading Hospital, where she is also clerkship director for undergraduate medical studies for medical students of Temple, Penn State, and Philadelphia College of Osteopathic Medicine.

Melissa Tribuiani, MD '96, Newark, Del., is Medical Director of The St. Francis Center of Hope, where she sees a predominantly Spanish-speaking population. Her areas of interest include family-centered maternity care, pediatrics, diabetes management, and colposcopy. She serves on the Board of Directors of the Sickle Cell Disease Association of Delaware.

Gregory Luma, MD '98, Brooklyn, N.Y., is a family practice attending physician at Jamaica Hospital Medical Center and serves on the faculty of Mt. Sinai School of Medicine. His interests include preventive medicine and pediatric obesity.

Vance Moss, MD '98, and Vince Moss, MD '98, both of *Manhattan, N.Y.*, and both Army reservists, recently served a six-month medical mission in war-torn Kabul, Afghanistan, where they performed surgery on casualties under sub-optimal conditions. Locals referred to the identical twins as doganagi, Farsi for "same face healers." Vance is a urologist who plans on specializing in kidney transplantation, and Vince is a cardiothoracic surgeon.

00s

Aletha Maybank, MD '00, Brooklyn, N.Y., is Director of the Office of Minority Health of Suffolk County Department of Health Services, Hauppauge, N.Y.

Please give us *your* news:
templemed@temple.edu



Rachel Tehrani '09 with Samy Soliman '09, recipient of the Dean's scholarship, and Richard Tosti '09, recipient of the Colosey Scholarship



Salvitti Scholarship recipient Brad Hayward '09 with Niharika Ganta '09, and Dean's Award recipient Stephanie Sengelmann '09



Class of 1964 Scholarship recipient, Valeriya Poukas, MD '06 with Class of 1972 Scholarship Donor Stephen Permut, MD '72

Whatever happened to... Stanley H. Lorber, MD?



If you're an old friend or former student of **Stanley H. Lorber, MD**, you'll remember him as a man who kept a busy schedule, one who loves a good story and has a wry wit.

Little has changed in the 15 years since Dr. Lorber's retirement. In fact it is difficult to believe that he's almost 90.

In addition to his teaching and administrative duties as Professor and Chair of Gastroenterology, during his 43 years at Temple, Dr. Lorber held short- and long-term appointments at the University of Pennsylvania, the Veterans' Administration, the FDA, and the U.S. Navy, and did visiting lectureships and professorships nationwide.

He contributed to five medical texts, wrote more than 140 articles, and even presented before the 1970 Nobel Symposium in Stockholm. Under his leadership, the gastroenterology section at Temple flourished, and thrives today in the good hands of his protégé, **Robert Fisher, MD**, and his talented faculty.

Dr. Lorber was also the team physician for the Philadelphia 76ers for 25 years. "I have two championship rings," he says proudly, "one from 1967 with Wilt Chamberlain, and one from 1983 with Julius Irving. Wilt and I were good friends."

Wilt is gone, but golf remains a significant mainstay of Dr. Lorber's retirement schedule. He recently served a four-year term president of his golf club—the Banyan Golf Club in Palm Beach, Fla.—and still plays a full round three or four times a week. When he's not hitting the links, he is active with several clubs and civic organizations, among them the Society of the Four Arts and the Palm Beach Civic Association.

"I am very involved in civic activities," he says. "I have had a very fortunate life. Where I can contribute, I try to do so."

And, of course, Dr. Lorber enjoys spending time with his wife, Dorothea. "I know I'm biased," he says, "but many people have told me that my wife is the prettiest lady on the island. I think they're right."

Dr. Lorber still loves to travel. "I don't get to Philadelphia quite as much as I used to, but I love Philadelphia and, of course, Temple," he says, noting that he keeps close tabs on the Medical School through friends, former colleagues, and his former student, John Daly, MD '73, the current dean.

"I think very highly of Dean Daly," says Dr. Lorber. "He was a good student and is a wonderful dean. It has been so pleasing to watch Temple develop into a first-class institution."

"I headed the Gastroenterology Department for 25 of my 40+ years at Temple," recalls Dr. Lorber, who knew legendary faculty like **Wayne Babcock**, **Spurgeon English**, and **Waldo Nelson**.

"Under **Leo Henicoff**, who was then dean, and **Sol Sherry**, who was head of the Department of Medicine, Temple developed a significant research capacity," he says. "Temple went through an evolution then, as it is again doing now."

"Temple is like Philadelphia," he says fondly. "Philadelphia is a large city, yet has the qualities of a small town. Temple is like that. Everybody knows everybody. That is not true in other institutions. There's no place I know of that has that same feeling of relaxation and friendliness."

Several years ago, colleagues and friends established the Lorber Professorship in Gastroenterology in Dr. Lorber's honor. Robert Fisher, MD, Professor of Medicine and Chief of Gastroenterology, currently holds the professorship.

For information on making a gift to the Lorber Professorship in Gastroenterology, contact the Office of Development and Alumni Affairs at 215.707.3023 or e-mail Eric Abel, Assistant Dean, at eric.abel@temple.edu.



Student View

Answering the Call: Temple Students Spend Winter Break on the Gulf Coast

To help Temple medical students maintain their commitment to service, the Alumni Association Board of Directors launched a grant program for medical students, requesting proposals for projects that will enhance students' development as medical science professionals—academically, clinically, and/or culturally—while serving a particular community in need.

Funding from the Board, coupled with support from the Arnold P. Gold Foundation, gave 10 students the chance to spend a week of their winter vacation in New Orleans' Ninth Ward, offering medical assistance and general manpower to residents of the flood-ravaged region. Students worked with a community-based organization there called Common Ground.

Alex Hamling, MBA '04, MD '06, now a resident in pediatrics at Cincinnati Childrens Hospital, wrote about the trip in his journal when he returned home. The following is an excerpt from his journal:



L-R: Monica Dhand ('07), Eric Burlingame ('09), Arati Karnik, MD'06, Ejiro Eduvie, BS'04 ('08), Cecilia Tydestam ('09), Paul Lyons MD, Zoë Maher ('08), Alex Hamling, MBA '04, MD '06, Gayle Matthews ('09), Raghu Ranganathan ('08), and Kevin Krauland ('08)

January 1, 2006

After months of planning, Zoë Maher ('08) had recruited a band of 10 medical students spanning all four years, and Paul Lyons MD, Associate Professor of Family and Community Medicine, for our mission. From December 26 to December 31, we were to provide medical and reconstruction relief for the Common Ground collective based in the Algiers community of New Orleans. Beyond that, I had no idea what to expect.

When we arrived, it became clear that what we had to offer was pretty desperately needed.

Common Ground runs two free clinics in New Orleans, one in Algiers, the other in the Ninth Ward, as well as a distribution center for donated goods. Every morning, the volunteers convened at the Algiers clinic to discuss the agenda for the day.

I spent Tuesday working with Monica Dhand ('07) and Dr. Lyons in the Ninth Ward's satellite clinic, a single-story house now stockpiled with medical



Alex Hamling, MBA '05, MD '06, helps organize the clinic case log

supplies. Monica and I had a productive day, seeing more than 30 walk-in patients. We vaccinated for hepatitis A, B, and tetanus; provided prescriptions; dealt with hypersensitivity pneumonitis from mold; and even attended to a minor trauma case: a power hammer had shattered a young man's nail.

On Wednesday, the Algiers clinic held a flu shot drive. The Temple students quickly reorganized the intake and flow of patients. The less-experienced students ran the triage, check-in, and vitals' stations, while the upper years provided counseling, exams, and vaccinations.

I spent the next day at the Distribution Center with Kevin Krauland ('08), Monica, Cecilia Tydestam ('09) and Raghu Ranganathan ('08), sorting through boxes of donations and removing nails from lumber for later reuse.

After a day of hard work, we decided to explore the Ninth Ward on foot. Most striking to me were the "X's" spray-painted with numbers and letters on the houses. Locals said they symbolized

the date when the structure was searched, by which organization, and if any deceased were found inside.

The difference between one side of the levy and the other was like night and day. The desertedness was eerie on the Lower Ninth: No people, no pets, only the sounds of the cranes working in the distance. Houses on the breached side were leveled, completely destroyed, moved off their foundations. Some were nothing more than roofs on the ground, walls splintered into pieces. At times it was hard to tell how many houses were even once there.

On our final day, we helped the Algiers clinic relocate. The clinic shortened its hours, but still saw upwards of 60 patients that day. After the clinic closed, we put down our stethoscopes and put on our work gloves to begin boxing and moving supplies.

After a long travel day back to Pittsburgh, I arrived home in time to enjoy a New Year's celebration. The thrill and enjoyment of the trip, along with meeting and learning about the other volunteers and people in the community, are memories my classmates and I will treasure.



At the Algiers clinic

Alumni, Faculty Aid in Relief Efforts

Among the many Temple faculty and alumni who also volunteered their time and expertise to help those affected by Hurricane Katrina were:

William DeLong, Jr., MD '78, Professor of Orthopedic Surgery at Temple, was deployed as a member of FEMA's International Medical Surgical Response Team on September 2, the Friday night after the flood. In two makeshift hospitals—one at Louisiana State University's Pete Maravich Arena, the other in New Orleans' Louis Armstrong International Airport—Dr. DeLong treated people with injuries and assisted those whose medical conditions were exacerbated by lack of food, water, or medications. Dr. DeLong recalls that Army-issued meals were considered valuable commodities, reserved for patients, and water was assumed to be contaminated with e-coli. "You had to use sanitizer on your face and hands after a shower just to be safe," he says. Dr. DeLong was ultimately deployed to West Jefferson Hospital, one of only three out of 10 area hospitals with electricity. "Only 30 percent of the hospital staff was on site," he says, "and everyone working there had lost their homes."

Jeff Kochan, MD, Associate Professor of Radiology and Neurosurgery at Temple, arrived in Baton Rouge on September 4 and secured a volunteer position with the Louisiana State Department of Health and Hospitals. Part of a search and rescue team working in conjunction with the National Guard, the U.S. Army, local police, volunteer boat crews, and more than 400 ambulance crews from every state in the union, Dr. Kochan's days were filled with optimism and exhaustion. "Emotions run the full gamut," he wrote in an email. "Frustration at the politics, tension about working under possible sniper attack, elation when we find survivors and are able to get them out, empathy when we talk to the victims and hear all their horrifying stories, anger when faced with pointless delays." Dr. Kochan helped establish a clinic at the end of Canal Street, across from Harrah's Casino, where three doctors, two nurses, and six paramedics treated 700 patients on their first day.

Joe Thompson, MD '91, an ophthalmologist and New Orleans native, was both a victim and a relief worker. While his own house was submerged under nine feet of water, he used his canoe to help transport people trapped by the flood. He ultimately gave his canoe away and abandoned his house, relying on the assistance of others to help him get to dry ground with his dog and bird, which he transported in crates on a float rigged with old tires. "I continue to be awed by the outpouring of kindness from complete strangers," he said. He has since returned to the area to donate supplies and help with relief efforts.

John Tyson, MD '60, of Albuquerque, N.M., spent two weeks in New Orleans and Baton Rouge as senior physician with University of New Mexico Disaster Medical Assistance Team, a volunteer group of physicians, nurses, and paramedics. He flew to Louisiana during the second day of the hurricane to treat patients in the Superdome and in a makeshift clinic in Louisiana State University's basketball arena, where he spent 12-hour days transferring the homeless to better shelters, treating thousands of urgent care patients, providing overnight hospital care for patients who lost their medicines (diabetics, hypertensives, asthmatics, and psychiatric and methadone patients), and treating people with subacute post traumatic shock problems. "I was happy to be a part of the United States relief effort in the Temple tradition of helping out in times of need," he said.

PHILANTHROPY NOTES*

In this section of Philanthropy Notes, we highlight gifts and pledges to our new medical school building campaign.



Solomon Luo, MD, Res '86



Sandra Harmon-Weiss, MD '74



E. Ronald Salvitti, MD '63

From the Chairs of the Campaign for the New Medical School Building

Dear Alumni, Faculty, Staff, Students and Friends,

A new home is being built for the School of Medicine that is slated to open in 2009. We are proud, we are excited, and we are behind it (body, mind, spirit, and wallet) because we love medicine and appreciate Temple for preparing us so thoroughly for it.

The new School of Medicine will cost \$150 million to build. The Commonwealth of Pennsylvania has allocated \$50 million toward the project. The University will contribute another \$50 million via the issuance of municipal bonds. The remaining \$50 million is the school's responsibility, including the need to raise \$33 million in new philanthropy.

To date, \$25 million has been raised toward our \$33 million fundraising goal. This means that \$8 million remains to be raised.

Many alumni, faculty, and friends have already given. The most generous gifts are listed on the pages that follow, but all gifts are important and necessary—so please make your mark on the project. Temple certainly has made its mark on you.

A handwritten signature in black ink, appearing to read 'Solomon Luo'.

Solomon Luo, MD, Res '86

A handwritten signature in black ink, appearing to read 'Sandra Harmon-Weiss'.

Sandra Harmon-Weiss, MD '74

A handwritten signature in black ink, appearing to read 'E. Ronald Salvitti'.

E. Ronald Salvitti, MD '63



***Goldberg “Does More” for Temple**

Amy Goldberg, MD, Res-Surg ’92, Professor of Surgery at Temple, wants to give medical students and residents a comfortable place to study and remind them of how important it is to work hard.

She and her father and stepmother, Ray and Ellen Goldberg, have jointly funded a study lounge in the new medical school building. In it, says Dr. Goldberg, will be a plaque that reads: “He who does not voluntarily do more than he is obliged to do will, in time, do less than he ought, and in the end will find himself unable to do what he must” (Rabbi Joseph Krauskopf, 1858-1923, founder of Delaware Valley College).

Dr. Goldberg says that the study room reflects the indispensable support that her father and his wife have had not only for her medical career but also for her love for Temple.

In addition to her teaching and patient care duties, Dr. Goldberg directs the general surgery residency and trauma programs. She first came to Temple in 1987 as a surgical intern, completed her residency in 1992, joined the faculty in 1993, and has since earned numerous awards for her teaching, including the 2006 Lindback Award for Distinguished Teaching (see page 26).

Dr. Goldberg does more because she’s inspired by Temple’s mission of patient care, community, education, and research. “It’s a palpable mission,” she says. “The students are wonderful. It is so amazing how, year after year, they are enthusiastic, talented, and dedicated.”

The Goldbergs’ gift to Temple celebrates these qualities and reminds students that, in Dr. Goldberg’s words, “working hard is something that you must do full-force every day.”

***Eisenstein and Eisenberg, Still Sharing a Room**

Bernard Eisenstein, BS ’41, MD ’44, of Tenafly, N.J., and **Morton Eisenberg, BS ’41, MD ’44**, of New York, N.Y., spent seven years as roommates while pursuing their undergraduate and medical degrees at Temple. And now, with a joint gift to the new Medical School building, they have ensured that they will always share a room at Temple: the Eisenberg-Eisenstein Lounge.

“We think relaxation is important for students and faculty,” Dr. Eisenstein says of their decision to make a gift to name a lounge on one of the new building’s teaching and research floors. Dr. Eisenberg agrees. “It will be a place where you can get to know your colleagues and faculty outside the pressure of the lecture halls and exam rooms,” he says.

Drs. Eisenberg and Eisenstein, who first met in 1937 and continue their friendship with monthly get-togethers, both credit their careers to Temple.

“I feel very strongly that without Temple I would be nothing and have nothing,” says Dr. Eisenstein, who practiced cardiology in New Jersey and taught at the Albert Einstein College of Medicine and the University of Medicine and Dentistry of New Jersey before retiring five years ago. “Temple is our whole world.”

Dr. Eisenberg echoes the sentiment. “Those three years in medical school were among the most significant in my life,” he says.

Dr. Eisenberg is “mostly retired” from his psychiatry practice in Manhattan, though he says he likes it too much to give it up completely. “My whole identity is tied up with being a physician, and those three years at Temple made it possible. I am totally grateful.”

The old friends are both very dedicated to their alma mater, having previously supported the Class of 1944 scholarship fund. They couldn’t be happier about supporting construction of a new medical school building that will help “teach people to be doctors and go out and help people,” says Dr. Eisenstein happily.



Classmates Morton Eisenberg, MD ’44 (left) and Bernard Eisenstein, MD ’44



***The Poliners: Past, Present, Future**

Although the times have certainly changed since **Hime Poliner, BS '34, MD '36**, and his wife Kaye, BS '44 (education), attended Temple University, their affection for the place has never wavered. And with their recent gifts naming the Dr. Hime and Kay Poliner Café and the Dr. Hime and Kay Poliner Classroom in the new medical school building, their fondness for Temple will leave an impression that will last for many generations to come.

“Temple has changed a lot since I was a student,” Dr. Poliner says. “Medicine has changed a lot.” When he first began seeing patients, office visits were a dollar. “I could hold every drug that we dispensed in one hand,” he recalls. “For the first 10 years I practiced, we didn’t have antibiotics!”



Hime Poliner in 1936

Dr. Poliner practiced in the first floor of the family’s three-story Easton, Pa., home for more than 50 years, retiring on his 82nd birthday. Mrs. Poliner was his office manager for 22 of those years, and, she jokes “without pay!” The couple, who have five children and seven grandchildren, celebrated their 60th wedding anniversary in July.

“If Temple didn’t give me the education they gave me, I wouldn’t be where I am,” Dr. Poliner says.

“My husband appreciates all that they did for him at Temple,” Mrs. Poliner adds. “He wants to repay them.”

In addition to their recent gifts to the new building, the Poliners have generously supported scholarship funds and other Temple initiatives over the years, more than showing their gratitude.



The yearbook photograph of Maurice J. Stone, MD '36

***Possibilities Realized in Stone**

The 1936 *Skull* yearbook features a profile about the then-newly graduated **Maurice J. Stone, MD '36**, which reads: “Maurice is always keenly sensitive to the possibilities that lurk around him.”

Former Chief of Dermatology at St. Joseph’s Hospital Health Center in Syracuse, N.Y., Dr. Stone thoroughly appreciated his medical education at Temple and continued to be very interested in Temple throughout his life. He kept in touch until his death in 2002 at the age of 91.

Cora Alsante, Esq., a partner at Hancock & Estabrook, LLP, in Syracuse, N.Y., who served as the executrix of Dr. Stone’s estate, says that he had always hoped to support new construction at the school. “Keenly sensitive to the possibilities,” he made a provision in his will for just such a project, but, unfortunately did pass away before plans for the School’s new building got underway.

Ms. Alsante says that Dr. Stone would have been thrilled to learn about the new medical school building and even happier that his gift will be memorialized by the naming of The Maurice Stone Atrium, a soaring space, full of light and life, a focal point for students and faculty.

“Dr. Stone wanted to see the school grow and flourish,” says Ms. Alsante. “He felt that Temple gave him excellent training as a physician, and he wanted to help continue the growth of the school. He loved Temple and always wanted to give back.”

To honor Dr. Stone, a student from Temple’s Tyler School of Art will create a bust of him that will be displayed in the atrium—another possibility realized in “stone.”



*Lombardi Says Thanks

When patients thank **Adolph Lombardi, Jr., MD '81**, for the work he has done, he says that he can't help but thank Temple University School of Medicine.

"I have been thanked for the surgeries I've done, for giving patients a new lease on life" says Dr. Lombardi, an orthopedic surgeon in Columbus, Ohio. "I wouldn't be able to do it without Temple. Temple is near and dear to me."

Such is the sentiment behind Dr. Lombardi's gift to the new medical school building, which will name the Adolph V. Lombardi, Jr., MD '81, Student Lounge.

"Temple is a great place," he says, "a place where diverse individuals find a good home. The new facility is much needed. It will provide the opportunity for more students to come to Temple and be educated."

Dr. Lombardi says he always wanted to go to the Temple. As an undergraduate at St. Joseph's University, Temple was his first choice. But he was wait-listed and almost on his way to his second-choice school when the dean at Temple heeded his request to reconsider his application. He remembers very well the day he was accepted at Temple.

After graduating in 1981, Dr. Lombardi stayed on to serve as a surgical intern at Temple, and since 1987 has been practicing orthopedics in Columbus, specializing in hip and knee replacements. He performs approximately 1,000 procedures each year. He is also a designer of the Maxim Knee and the Vanguard Knee Systems, as well as the AVL Anti-Subluxation Rotating Hinge Knee and the Max-Ti Reconstruction Acetabular Cage System.

"I enjoyed every minute of my Temple education," he says proudly, noting that he is thankful for Temple and thankful to be able to give something back.

IBC DONATES \$3.5 MILLION TO THE NEW BUILDING

Independence Blue Cross (IBC) has pledged \$3.5 million to support heart research at Temple University School of Medicine. The Independence Blue Cross Cardiovascular Research Center will occupy the top floor in the new building.

"Research is essential to providing quality medical education and patient care," says Dean Daly. "Through this gift, Independence Blue Cross shares our commitment to patient health and education."

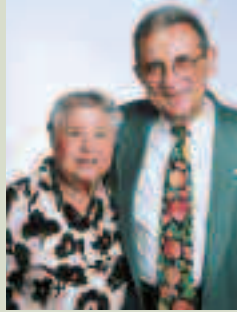
"An investment in Temple's heart research center is an investment in our community and in the health of people throughout our region who benefit from heart research," said Joseph A. Frick, IBC President and CEO.

Cardiovascular disease is a shared concern for both Temple and IBC. Chronic heart failure is the leading cause of death in the United States and carries a staggering economic burden. Temple's Cardiovascular Research Group (CVR), which will occupy the IBC Research Center, is among a small number of scientists nationwide who believe they have found an unorthodox but potentially better approach to treating heart failure: cardiac regeneration.

Using one adult stem cell of the heart of a large mammal, CVR scientists have successfully grown new heart tissue in the laboratory. In Europe, 10 small clinical trials studying this technique have shown positive results.

"The possibility of coaxing the failing heart to actually mend itself has created enormous interest at Temple—an excitement now underscored by the prospect of working in a spectacular new space," said **Steven Houser, PhD '78**, Director of the Cardiovascular Research Group, Laura H. Carnell Professor of Physiology, and Senior Associate Dean for Research.

The Independence Blue Cross Cardiovascular Research Center will feature sophisticated technologies conducive to both collaborative and individual research pursuits in this and other areas of cardiovascular research, both in the laboratory and in clinical settings.



*Caring with the Cundys

When **Kenneth Cundy, PhD**, came to the School of Medicine in July 1965 as an instructor and postdoctoral candidate, he and his wife Elsie could hardly have imagined that they'd end up staying on for more than 40 years. And now, four decades later, with their recent gifts and pledges in support of scholarships and the new medical school building, the Cundy name will shine on at Temple for many more decades to come.

The Cundys' first gift of \$100,000 will be used to name a classroom in the new building. In the meantime, Classroom B, in Kresge Hall, where Dr. Cundy has taught for the last 37 years, has been renamed in the Cundys' honor. The Cundys then made a subsequent pledge of \$1 million that will be divided between the Cundy Endowed Scholarship and the new building, where their gift will also ultimately name the Development and Alumni Relations suite in the new medical school building.

Over the years, Dr. Cundy has served Temple in many roles, including president of the medical faculty and university faculty twice. He directed the clinical microbiology lab, headed the postdoctoral training program in clinical microbiology, served as a primary faculty member in microbiology and immunology, and held secondary appointments in pathology and pediatrics. He was the School's rugby coach and AKK-Phi Chi faculty mentor.

He is a longtime faculty representative on the Medical School Alumni Board. He has won numerous awards for his teaching, including two Golden Apples, the Stauffer Award for Distinguished Faculty Service, the Lindback Award for Distinguished Teaching, and the Honored Professor Award of the School of Medicine. Although he formally retired as Emeritus Professor in 1992, Dr. Cundy continues to teach microbiology to medical and dental students at Temple.

"Temple has become our extended family," says Dr. Cundy, who has strong ties with many former students. One is Dean Daly, who graduated in 1973. "Ken Cundy has been an indispensable part of Temple," says Dr. Daly. "He and Elsie are two of our staunchest supporters and biggest fans. I can't thank them enough for everything they've done over the years. We know how much they care." "I owe my career to Temple," Dr. Cundy says. "I'm delighted to give something back."



Aisha Chaudhry, BA '99, DPM '04



Iftikhar Chaudhry, MD-Res '97

*Connecting with the Chaudhrys

Drs. Iftikhar and Aisha Chaudhry, husband and wife, both went to school at Temple, but never crossed paths here. It wasn't until after their respective graduations that they met. However, with their gift to name a room in the new medical school building, they are celebrating the central role that Temple has had in their lives and relationship.

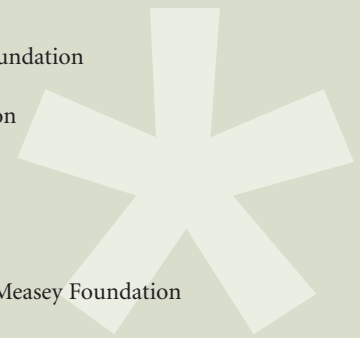
"We want to try to help students who are coming through Temple. Temple gave us a great education, and we want to give back," says **Aisha Chaudhry, BA '99, DPM '04**, who earned her bachelor's degree in psychology at Temple and graduated from the University's School of Podiatric Medicine in 2004. She is now a podiatry resident at Cooper Hospital.

Iftikhar Chaudhry, MD, who completed his residency in ophthalmology at Temple in 1997, is now a faculty member and Director of Lasik and Refractive Surgery at Temple. In addition, he has a thriving private practice, IC Laser Eye Care, in Bensalem, Pa.

The couple credits Temple with much of their success.

*Recent Corporate and Foundation Grants of \$50,000 to \$3 million

- The Albert Alley Foundation
- American Cancer Society
- American Diabetes Association
- American Heart Association
- American Institute for Cancer Research
- Cephalon Inc.
- Gilead Sciences, Inc.
- Independence Blue Cross
- Johnson & Johnson, Inc.
- Susan G. Komen Breast Cancer Foundation
- Merck and Company
- Catherine Hayes Nelson Foundation
- Novartis Pharmaceuticals
- Elsa N. Pardee Foundation
- Pew Charitable Trusts
- Philadelphia Shriners Hospitals
- The Salvitti Family Foundation
- The Benjamin and Mary Siddons Measey Foundation
- The Shulsky Foundation
- W.W. Smith Charitable Trusts



* More Recent Gifts and Pledges to the Building

\$25,000 and up

- Alan Berger, MD '76**, to the Class of 1976 fund for the new medical school building
- Daniel Bethem, MD '70**, to the John W. Lachman, MD '43, fund for the new medical school building
- John Casey Jr., MD '84**, to the John W. Lachman, MD '43, fund for the new medical school building
- John Gottlieb, MD '74**, to the John W. Lachman, MD '43, fund for the new medical school building
- Michael Gratch, MD '76**, to the John W. Lachman, MD '43, fund for the new medical school building
- Sanford Greenberg, MD '60**, to the new medical school building
- Michael Kalson, MD '79**, to the John W. Lachman, MD '43, fund for the new medical school building
- Alan Maurer, MD '75**, to the Faculty and Staff Campaign for the new medical school building
- James McClurken, MD '76**, to the Faculty and Staff Campaign for the new medical school building
- Stephen Permut, MD '72**, to the Harvey F. Watts, MD '48 fund for the new medical school building
- Glenn Perry, MD '78**, to the John W. Lachman, MD '43, fund for the new medical school building
- Christopher Platsoucas, PhD**, and **Emilia Oleszak, PhD**, to the Faculty and Staff Campaign for the new medical school building
- Anthony Salem, MD '62**, to the John W. Lachman, MD '43, fund for the new medical school building
- Carson D. Schneck, MD '59, PhD '65**, to the Carson D. Schneck fund for the new medical school building
- Joseph Scornavachhi, MD '73**, to the John W. Lachman, MD '43, fund for the new medical school building
- In Sook Seo, MD**, to the Harvey F. Watts, MD '48, fund for the new medical school building
- Roy Swingle, MD '45**, to the Class of 1945 Room in the new medical school building
- Joseph Thoder, MD '82**, to the John W. Lachman, MD '43, fund for the new medical school building
- Joseph Torg, MD '61**, to the John W. Lachman, MD '43, fund for the new medical school building
- Paul Weidner, MD '82**, to the John W. Lachman, MD '43, fund for the new medical school building
- Steven Wolf, MD '84**, to the John W. Lachman, MD '43, fund for the new medical school building

FACULTY AND STAFF SHOW THEIR COMMITMENT

Like alumni, faculty and staff have a strong belief in the School of Medicine—as evidenced by their enthusiastic support of the Faculty and Staff Campaign for the new building. The campaign kicked off in mid-October 2005 with a goal of raising \$1 million. To date, more than 380 members of the school's faculty and staff have donated nearly \$2 million, exceeding their target in less than a year.

More than 160 contributors to the campaign are first-time contributors, which means they were eligible for matching gifts through the Gittis Challenge. In the challenge, former Temple University Board of Trustees Chair Howard Gittis committed to match all first-time gifts made by University employees, dollar-for-dollar, up to \$1,000. To date, he has contributed more than \$80,000 in matching gifts to the medical school alone.

“Before you know it, we're all going to be working together in a spectacular new building that we helped design and finance,” says **Steve Permut, MD '72**, associate dean and chair of Family Medicine, who served on the public space task force for the new building project. “What could be better?”

The School of Medicine gratefully acknowledges members of the Faculty and Staff Campaign Committee: **Alfred Bove, MD '66, PhD '70**; **Brad Chilnick**; **Kenneth Cundy, PhD**; **Daniel Dempsey, MD**; **Elizabeth Drum, MD '86**; **Toby Eisenstein, PhD**; **Thomas Fekete, MD**; **Albert Finestone, MD '45**; **Amy Goldberg, MD (Res '92)**; **Sean Harbison, MD '86**; **Steven Houser, PhD '78**; **Ellie Kelepouris, MD**; **Richard Kozera, MD**; **Thomas Kupp**; **Stephen Permut, MD '72**; **Craig Pfister**; **Joseph Rudy**; **James Ryan, PhD**; **Dianne Soprano, PhD**; **Samuel H. Steinberg, PhD**; **Gerald Sterling, PhD**; **Mark-Allen Taylor, JD**; **Ronald Tuma, PhD '75**; **Audrey Uknis, MD '87**; and **Gregory Zimmaro**.

For more information, visit www.temple.edu/medfacultystaffcampaign

* Gifts to the New Building

Would you like to support Temple University School of Medicine's new education and research building? Many gifts, both small and large, such as a recent one made by Leonard Jacob, PhD '75, MD, have been made in honor of TUSM's Dean, John Daly, MD '73, and many others in honor of faculty, friends, and family. Gifts can be made outright or via pledge (maximum 5 years) with a check, credit card, or through gifts of appreciated securities. Gifts of appreciated securities can be deducted at full market value on the date of transfer to Temple, and if you have owned them for at least 12 months, they will not be subject to tax on appreciated value. Please use the envelope enclosed in this magazine, or contact Eric Abel, Assistant Dean, at 215.707.3023 (or toll free at 800.331.2839) or via email at eric.abel@temple.edu.

Named Gifts in the New School of Medicine

New Medical School Building	\$20 million
Health Sciences Center Library	\$5 million
Collaborative Learning Tower	\$2.5 million

LOWER LEVEL — LIBRARY

Entire Floor	\$500,000
Journal Area [reserved]	\$250,000
William D. Kimmler	
Historical Book Collection Room [reserved]	\$100,000
James S. Nowell, MD '43	
General Collection Lounges [all reserved]	each \$75,000
James S. Nowell, MD '43 (2)	
Large Group Study Rooms [2 available]	each \$50,000
Medium Group Study Room [5 available]	each \$30,000
Class of 1955	
Class of 1960	
Class of 1980	
Small Group Study Rooms [1 available]	each \$25,000
Jonathan Briskin, MD '81	
Theodore Gerson, MD '45	
Hawaii Medical Alumni	
E. Premkumar Reddy, PhD	
Dr. and Mrs. Joel E. Richter	

FIRST FLOOR

Commons [reserved]	\$2.5 million
Maurice Stone, MD '36	
Auditorium [reserved]	\$1 million
Solomon Luo, MD-Res '86	
Café [reserved]	\$1 million
Hime Poliner, MD '36 and Kay Poliner, BA '44	
Terrace	\$500,000
Lobby	\$500,000
Gallery	\$500,000
Admissions Suite [reserved]	\$300,000
Anonymous Friend of the Class of 1948	
Dining Lounge [reserved]	\$250,000
Daniel Nesi, MD '63	
Classrooms [all reserved]	each \$100,000
Kenneth Cundy, PhD and Elsie Cundy, RN	
Edwin Kellerman, MD '84 and Wilma Kellerman	
Admissions Conference Room [reserved]	\$100,000
The Lyons Family	
Director of Admissions Office [reserved]	\$50,000
Frederick P. Sutliff, MD '46	

FIRST FLOOR — Library

Entire Floor [reserved]	\$1 million
Temple University School of Medicine's Faculty and Staff	
Reference Area	\$250,000
Student Reserve Room [reserved]	\$150,000
Harry Shubin, MD '37 and Celia Shubin	
Quiet Study Area [reserved]	\$100,000
David Clements, Jr., MD '52	
Large Group Study Areas [all reserved]	each \$50,000
John Daly, MD '73 and Mary Daly	
Amy Goldberg, MD-Res '92, and Ray and Ellen Goldberg	
Small Group Study Areas [all reserved]	each \$25,000
Michael S. Miller, in memory of Dr. Lewis Richards and Sidney Miller	
Joseph Nejman, MD '79 and Michelle Nejman	
Irene Resnick Memorial Room	

SECOND FLOOR

Classrooms [4 available]	each \$100,000
Frank Baldino, Jr., PhD '80 and Sandra Baldino	
Class of 1945	
Class of 1948	
Class of 1973	
Study Lounges [2 available]	each \$100,000
Dining Conference Room [reserved]	\$75,000
Class of 1976	
Large Study Rooms [all reserved]	each \$50,000
Richard Close, MD '72 and Anne Close, Class of '09	
Richard J. Kozera, MD and Virginia Kozera	
Medium Study Rooms [all reserved]	each \$30,000
Karen Starko, MD '75 in memory of Alex and Eleanor Starko	
Temple Cardiology Associates	
Student Organization Offices [2 available]	each \$30,000
Small Study Rooms [all reserved]	each \$25,000
Marc DiNardo and Elizabeth Drum, MD '86	
Edward Donahue, MD '79	
Henry Kehrli, MD '36 and William Kehrli, MD '65	
David Rovner, MD '55 and Margaret Holmes Rovner	

SECOND FLOOR — Library

Floor	\$1 million
Quiet Study Room [reserved]	\$100,000
M. Pooley Bradshaw, MD '52	
Information Literacy Room	\$100,000
Reference Computer Classroom [reserved]	\$75,000
Harvey F. Watts, MD '48	
Corner Study Room [reserved]	\$75,000
Temple University Department of Radiology	
Multimedia Conference Room [reserved]	\$50,000
Hugo Schwandt, MD '63	
Large Study Rooms [1 available]	each \$50,000
David Greenwald, MD '70	
Medium Study Rooms [all reserved]	\$30,000
Morton Kligerman MD '41, Memorial Room	
Leon S. Malmud, MD, and Elsa Malmud, PhD '66	
Small Study Rooms [all reserved]	\$25,000
Rodger Barnette, MD '79 and Virginia Barnette	
Leonard Brody, MD '79 and Robert Mannherz, MD '79	
Daniel Dempsey, MD and Barbara Dempsey	
Thomas Roland, Jr., MD '83	
Ralph Sando, MD '73	
David M. Zebley	

THIRD FLOOR

Auditorium [reserved]	\$1 million
Name Pending	
Clinical Skills and Simulation Center [reserved]	\$1 million
Benjamin and Mary Siddons Measey Foundation	
Bridge to Kresge Building [reserved]	\$1 million
Name pending	
Simulation Classroom	\$100,000
Tower Student Lounge [reserved]	\$100,000
Adolph Lombardi, MD '81	
Classrooms [8 available]	each \$100,000
Study Lounges [1 available]	each \$100,000
Robert Berish, MD '65, and Barbara Berish Brown, Esq.	
Seminar Room	\$75,000
Dining Conference Room	\$75,000
Large Study Rooms [2 available]	each \$50,000
Small Study Rooms [all reserved]	each \$25,000
George Bagby, MD '46	
Anthony Frempong Boadu, MD '92	
Steven Harper, MD '83	
Robert McNamara, MD and Mary McNamara	

FOURTH FLOOR

Gross Anatomy Laboratory [reserved]	\$1 million
In Honor of Carson D. Schneck, MD '59, PhD '65	
Research Laboratories [4 available]	each \$250,000
Tower Conference Room [reserved]	\$150,000
W. Wayne Babcock Memorial Room	
Small Conference Room	\$75,000
Corner Faculty Offices [all reserved]	\$50,000
Class of 1945 James Flood, MD '35	
Lounge [reserved]	\$50,000
Bernard Eisenstein, MD '44 and Morton Eisenberg, MD '44	
Seminar Room [reserved]	\$30,000
TUSM Division of Pulmonary & Critical Care Medicine	
Faculty Offices [15 available]	each \$25,000
Class of 1956 Class of 1975	

FIFTH FLOOR (SERVICE FLOOR)

SIXTH FLOOR

Entire Floor [reserved]	\$1 million
Shriners Institute for Translational Research	
Research Laboratories [4 available]	each \$250,000
Tower Conference Room	\$150,000
Corner Faculty Offices [2 available]	each \$50,000
Faculty Offices [17 available]	each \$25,000
Lounge [2 available]	\$50,000
Small Conference Room	\$75,000

SEVENTH FLOOR

Entire Floor [reserved]	\$1 million
Cephalon, Inc.	
Research Laboratories [3 available]	each \$250,000
Anonymous Friend of the Class of 1948	
Corner Faculty Offices [2 available]	each \$50,000
Faculty Offices [17 available]	each \$25,000
Front Lounge	\$50,000
Side Lounge	\$50,000
Tower Conference Room	\$150,000
Small Conference Room	\$75,000

EIGHTH FLOOR

Entire Floor [reserved]	\$1 million
Lindsay Rosenwald, MD '83	
Research Laboratories [4 available]	each \$250,000
Corner Faculty Offices [1 available]	each \$50,000
Robert J. Beitel, Jr., MD '48	
Faculty Offices [17 available]	each \$25,000
Front Lounge	\$50,000
Side Lounge	\$50,000
Tower Conference Room	\$150,000
Small Conference Room	\$75,000

NINTH FLOOR

Entire Floor	\$1 million
Research Laboratories [4 available]	each \$250,000
Corner Faculty Offices [2 available]	each \$50,000
Faculty Offices [17 available]	each \$25,000
Front Lounge	\$50,000
Side Lounge	\$50,000
Tower Conference Room	\$150,000
Small Conference Room	\$75,000

TENTH FLOOR

Entire Floor	\$1 million
Research Laboratories [4 available]	each \$250,000
Corner Faculty Offices [2 available]	each \$50,000
Faculty Offices [17 available]	each \$25,000
Front Lounge	\$50,000
Side Lounge	\$50,000
Tower Conference Room	\$150,000
Small Conference Room	\$75,000

ELEVENTH FLOOR

Entire Floor	\$1.5 million
Research Laboratories [all reserved]	\$1 million
Independence Blue Cross	
Dean's Suite [reserved]	\$500,000
Anonymous Friend of the Class of 1948	
Tower Conference & Board Room	\$500,000
Dean's Office	\$250,000
Development and Alumni Affairs Suite [reserved]	\$200,000
Kenneth Cundy, PhD and Elsie Cundy, RN	
Dean's Conference Room	\$150,000
Assistant Dean, Front Office	\$100,000
Director of Clinical Trials Office [reserved]	\$50,000
Robert Janicki, MD '61 and Jane Janicki	
Director of CME Office	\$50,000
Corner Faculty Office	\$50,000
Small Lounge [reserved]	\$25,000
Lii-Yoong Helga Criner and Gerard J. Criner, MD	
Faculty Offices [10 available]	each \$25,000
Administrative Offices [20 available]	each \$25,000
Front Offices [3 available]	each \$25,000

NOTES

Official names are abbreviated for the purposes of this list. Some names listed in this chart are names of donors and some are names of those honored by donors. Many individuals have made gifts of \$25,000 or more in support of the building (but not to specific named areas), as listed in "other recent gifts and pledges" on page 43 and in other recent editions of *Temple Medicine*. Still others have made gifts to specific funds established to name specific areas of the building once required funding levels are achieved.

Pending Named Gifts

The designations of the following donors' named spaces in the building are pending as of the date of this publication:

- Anonymous, \$50,000
- Iftikhar Chaudhry, MD-Res '99, and Aisha Chaudhry, DPM '04, \$50,000
- Howard Ginsburg, MD '71, and Harry Ginsburg, DO, \$1 million
- Vera Goodfriend, \$50,000
- Edwin Kellerman, MD '84, and William Kellerman, MD, \$200,000
- Daniel Polett, \$50,000
- E. Ronald Salvitti, MD '63, \$200,000
- Raymond Truex, Jr., MD '67, \$25,000
- Alex Von Schlichten, MD '61, \$400,000
- Sandra Harmon Weiss, MD '74, and Richard Weiss, DMD, \$25,000

In Memoriam



Dr. Nacht with his wife, Mary Beth Kelly, and their children, Zoe and Asher

Henry Carl Nacht, MD '76, New York, N.Y., an internist, medical educator and administrator with a great joie de vivre and a large and loyal following of patients and students, died on June 25, 2006. He was accidentally struck by a truck while biking with his wife on a bicycle path (customarily closed to motor vehicles) near the West Side Highway. He was 57. His wife of 33 years, Mary Beth Kelly, survived.

Dr. Nacht mentored hundreds of students at St. Luke's-Roosevelt Hospital Center, served as medical director of the its West Care group practice, a network that served thousands of New Yorkers. In addition he managed his own busy private practice on the Upper West Side, often jogging or bicycling to visit home-bound patients. An accomplished athlete, he competed 29 consecutive New York City Marathons and 20 Boston marathons, plus competed in many athletic fund raising events for AIDs research and prevention and other causes. Dr. Nacht was also President of River to River Medical Associates, a multi-site voluntary medical practice.

The St. Luke's-Roosevelt Board chair and executive staff issued a statement that said that the entire medical center family "acknowledges with profound sadness the untimely passing of a dear friend and devoted colleague...who earned the respect and admiration of all of us for his constant devotion to his patients and profession."

Dr. Nacht is survived by his wife, two children, and two sisters.



Mary Stuart Fisher, MD, Emeritus Professor of Radiology at Temple, died on April 24, 2006 at the age of 84. A well-respected thoracic and general radiologist, she was on staff for 15 years at Philadelphia General Hospital, then joined the Temple faculty in 1974, where she spent 30 years teaching diagnostic radiology to medical students and residents until retiring in 2003 at 80. She was honored with many awards throughout her career, including the Russell P. Moses Award for Excellence in Clinical Teaching (Temple); the Honored Radiologist Award (Pennsylvania Radiological Society, the Lindback Award for Distinguished Teaching (Temple); the Golden Apple Award (Temple); the Marie Curie Award (American Association for Women Radiologists); the Outstanding Educator Award (Philadelphia Roentgen Ray Society, and Physician of the Year (Temple, 1996).

Dr. Fisher was a fellow of both the College of Physicians of Philadelphia and the American College of Radiology, and served as a consultant for the National Board of Medical Examiners. Her portrait hangs in Temple University Hospital.

She is survived by her husband, four children, eight grandchildren, and one great-grandson.

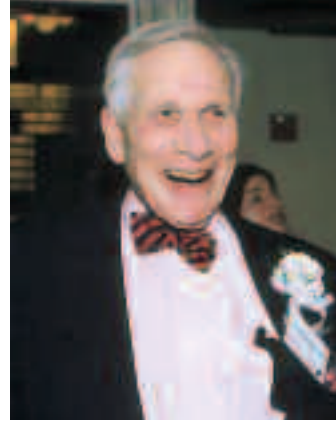


Dorothy Hicks, MD '44, Miami Beach, Fla., an obstetrician/gynecologist who was best known for her efforts to reform the treatment of rape victims, died on September 27, 2005, at the age of 86.

In 1974, Dr. Hicks founded the Jackson Memorial Hospital Rape Treatment Center, and served as its medical director for 19 years. The center became a model with regard to the compassionate manner in which personnel are taught to examine victims and collect and document the evidence needed to prosecute rapes.

Dr. Hicks traveled around the country, teaching prosecutors, detectives and nurses how to treat patients with compassion, and preserve evidence. Her mission was to improve medical care and treatment for all victims of sexual violence. In the 1960s, Dr. Hicks served on the obstetrics/gynecology faculty of the University of Miami School of Medicine (and was the sole female faculty member there).

In 1994, Temple recognized her with an Alumni Achievement Award for her contributions to patient advocacy. Dr. Hicks leaves no surviving immediate family.



Morton Kligerman, BS '38, MD '41, Philadelphia, Pa., died on June 7, 2006 at the age of 88. A founding father of modern radiation oncology, Dr. Kligerman helped develop chemoradiation therapy. In the 1960s he headed the famous Pi Meson cancer therapy project at the Los Alamos Scientific Laboratory in New Mexico in concert with the National Cancer Institute, and during the 1970s he and Dr. John Yuhas of the University of New Mexico adapted the Army drug, WR-2721, into the drug now known as Amifostine, which enables higher doses of radiation to be targeted at tumors by helping to prevent surrounding tissue damage. Dr. Kligerman also established numerous residency training programs in the field and trained many radiation oncologists who went on to become chairs at institutions such as Harvard, Duke and Yale. A former Temple faculty member, Dr. Kligerman served as Chair of Radiation Oncology at Yale and the University of Pennsylvania. A founding member of the American Society of Therapeutic Radiology and former President and Gold Medalist of the American Society for Therapeutic Radiation Oncology, Dr. Kligerman received numerous honors during his career, and was Temple University School of Medicine's Alumnus of the Year in 1989. Dr. Kligerman was awarded honorary degrees from Yale, Penn and the New School of Music, and the University of Pennsylvania established a chair in radiation oncology in his honor.

Dr. Kligerman is survived by his wife, a sister, a brother, two daughters, a son, a stepson, eight grandchildren, and two great-grandchildren.

In Memoriam *continued*

Alexis O. Fernández, MD, Res-MS '64, San Juan, Puerto Rico, a former Temple resident in otolaryngology, died on July 16, 2003. He held many posts during his fruitful career, having taught, published and lectured widely; and served as Chief of Otorhinolaryngology at the Ryder Memorial Hospital in Humacao. For 39 years, until the time of his death, he was Medical Director of the San Gabriel School for the Deaf (which named its ENT clinic in his honor). He co-founded the Puerto Rico Society of Otorhinolaryngology and Broncoesophagology (in 1968), and founded the Organización Internacional de Orientación al Sordo, an organization that raises awareness of the needs of the hearing impaired. The Senate of Puerto Rico posthumously honored him with the Philanthropist of the Year Award for a lifetime of advocacy for the handicapped. Dr. Fernandez was also an accomplished musician and composer. Some of his songs and jingles were commercially recorded.

Dr. Fernandez is survived by his wife, four children, and five grandchildren.

Konnie Landis, MD '96, a family practitioner from Everett, Wash., died on June 20, 2005, of pancreatic cancer. Dr. Landis' life focus was on the underserved. Before beginning medical school, she spent a year working with Mother Teresa's religious order in India and at an Eastern European orphanage. She did volunteer work with AIDS patients and built houses with Habitat for Humanity in the United States and abroad. In lieu of wedding presents, she and her husband asked for donations to fight AIDS in Africa and spent her honeymoon in Uganda with Habitat for Humanity. In Everett she practiced at the Community Health Center and spent free time in service. A colleague recalls one vacation that she spent in Vietnam, delivering food and medical supplies. In recognition of her devotion to service, Dr. Landis was the youngest person ever to be nominated for the distinguished service award of her undergraduate alma mater, Eastern Mennonite University.

She is survived by her husband, her parents, two sisters, and a brother. Another brother preceded her in death.

30s

Regis F. Burger, MD '30 11.13.02
 Abraham Glick, MD '34 1.22.06
 Harriet M. Henning, MD '36 6.10.02
 Michael E. Matsko, MD '36 1.15.02

40s

Harry J. Davis, MD '40 2.19.06
 Clarence A. Holland, Sr., MD '40 3.30.06
 Robert S. Morris, MD '40 1.13.02
 George S. Boyer, MD '41 11.15.05
 Helen E. Disilverstro, MD '42 3.8.06
 Charles H. Rushmore, MD '43 2.22.06
 Joseph J. Toland, III, MD '43 6.18.06
 Phyllis F. Schluckebier, MD '44 11.23.05
 Edward H. Bair, MD '45 4.04.06
 Roslyn Jones Bishoff, MD '45 2.27.06
 A. Victor Hansen, Jr., MD '45 1.25.06
 Elaine S. Van Den Bosch, MD '45 4.11.06
 George J. Callenberger, MD '46 11.4.05
 John C. Menges, MD '46 12.12.05
 Delmo A. Paris, MD '46 4.12.06
 Ralph C. Powell, MD '46 12.17.02
 Bruce F. Chandler, MD '48 12.12.02

50s

John H. Eves MD '50 12.10.02
 Lillian Thais Balter, MD '51 3.5.06
 Edward P. Didier, MD '51 5.30.06
 William L. Richards, MD '51 5.29.06
 Dwight B. Burley, Jr., MD '52 11.13.05
 Walter S. Hazlett, Jr., MD '52 3.26.06
 Walter C. Hill, MD '52 3.9.06
 John G. Parrish, Jr., MD '52 11.17.05
 Carl A. Sardi, MD '52 7.26.02
 Jack W. McElwain, MD '53 1.30.02
 Lincoln E. Solberg, MD '53 7.25.06
 John Y. Short, MD '54 12.28.05
 Irvin Singer, MD '54 8.15.06
 Joseph P. Tritschler, MD '54 2.22.02
 John S. Cole, Jr., MD '55 1.20.06
 Maurice M. Heath, MD '55 1.29.02
 Thomas F. Shivy, MD '55 1.1.06
 James A. Mollick, MD '56 6.13.06
 Donald R. Ermold, MD '57 2.7.06
 Arthur Fishman, MD '57 6.13.06
 Sidney Auerbach, MD '59 12.31.05
 Alan Goldfine, MD '59 6.17.06

60s

Donald A. Swetter, MD '61 1.9.06
 Edward D. Williams, MD '61 11.22.05

John A. Burland, MD '62 3.20.04
 James P. Beittel, MD '63 7.25.06
 Richard F. Lyster, MD '64 7.24.06
 Gordon G. Heiner, MD '65 3.24.06
 Andrew M. Mandell, MD '65 8.8.02
 Robert C. McCroskey, Jr., MD '66 10.26.02

70s

Mary Jean McDowell, MD '72 1.30.06
 Howard L. Elefant, MD '73 1.27.06
 Margaret S. Adler, MD '74 4.3.03
 John F. Barrett PhD '76 1.24.06
 Carl Nacht, MD '76 7.6.06
 Steven S. Sampson, MD '78 12.3.02
 Joel Ephraim Lewis, MD '79 8.30.05

80s

Richard A. Gervasio, MD '83 1.9.06
 Christine S. O'Donnell, MD '83 11.2.05
 Robert M. Vale, MD '87 7.20.03

90s

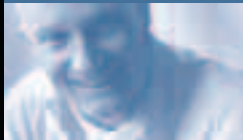
Ashley K. Wilson MD '98 2.2.05

Residents

James E. Bruce MD-Res '59 3.3.06
 Marie A. LoPonte MD-Res '69 8.7.02

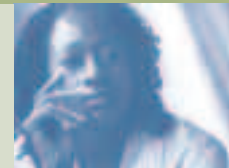


JUMPSTART YOUR LEGACY! TAX FREE DISTRIBUTIONS!



Thanks to the Pension Protection Act, which allows tax-free charitable distributions of up to \$100,000 per year from a traditional individual retirement account (IRA) or a Roth IRA during 2006 and 2007, you can reduce your gross taxable income by having all or part of your required minimum IRA distributions made directly to Temple or another approved charity.

- You must be at least **70.5** at the time the distribution is made.
- The distribution must be made directly from the IRA to Temple, not to a gift annuity, pooled income fund, or charitable remainder trust.
- You can transfer up to **\$100,000 per year during 2006 and 2007 for a total of \$200,000.**



The new ruling is particularly advantageous if you don't need the income of your minimum required IRA distribution; if your charitable gifts already equal 50% of your adjusted gross income (and you therefore don't receive an immediate tax benefit benefit from additional deductions); or you simply don't itemize your deductions.

For more information about how this new ruling can benefit you and Temple University School of Medicine, please contact:

Phil O'Connell
Executive Director, Planned Giving
philip.oconnell@temple.edu
(215) 204-1775 or (800) 822-6957