

Research at TUSM

- Resource and Cores

Hong Wang MD, PhD, EMBA

Dept Med Res Retreat Jan 21 2012

TUSM Research Administration

Steven R. Houser, PhD, FAHA,

Interim Senior Associate Dean for Research
Chair and Professor of Physiology, Director of CVRC

Joseph Cheung, MD,

Incoming Senior Associate Dean for Research
Professor of Medicine

Hong Wang, MD, PhD, EMBA, FAHA,

Assistant Dean for Research
Professor of Pharmacology

Diane Omdal, Director, Research Administration

TUSM Research Web Site

http://www.temple.edu/medicine/research/RESEARCH_TUSM/index.htm

Research At TUSM

[Contacts](#)

[Find A Faculty Member](#)

[News And Announcements](#)

[Recent Publications By TUSM Faculty](#)

RESEARCH AT TUSM

Research at Temple University School of Medicine (TUSM) is driven by a multidisciplinary group of dedicated basic and clinical scientists with a passion for discovery. Collaboration is the hallmark of 21st Century biomedical research enabling research teams to translate laboratory-based discoveries into new and innovative ways to treat and prevent disease. TUSM's translational research enterprise is making contributions to a host of health-related challenges that include: cardiovascular disease, obesity, pulmonary disease, autoimmune diseases, neurologic diseases, diseases of addiction, and more. Our teams of researchers offer an outstanding opportunity for graduate students and other trainees to begin their careers in research. We invite you to learn more about the achievements and recent discoveries of all who contribute to TUSM's research mission.

Links to recent publications appear on this page, as well as a search option to find specific researchers and learn about what problems they are trying to solve in their laboratories.

"Science has changed the way we do science. Today's scientists collaborate their individual talents to bear on large, interdisciplinary projects."

Bennett Lorber, M
Thomas M. Duran
Professor of Medic

[Research At TU](#)

[Guide For Investigators And Administrators \(PDF\)](#)

[Advice Corner](#)

[Useful Links](#)

[TUSM Seminars, Grand Rounds And Calendar Of Events](#)

[Departments, Centers And Institutes](#)

[Resources For Investigators, Students And Trainees](#)

[Grants And Contracts](#)

[Office Of Clinical Research Administration](#)

[Research Integrity And Compliance](#)

[Research Education](#)

[TUSM HOME](#)

Important Resources

Administration



Contact Information

Steven R. Houser
Interim Senior Assistant Dean for Research Medical Education :
Research Bldg., Room 3500 N. Broad Street Philadelphia, PA 19104
T: 215-707-4045
F: 215-707-0170
srhouser@temple.edu

Hong Wang, MD,
Assistant Dean for Medical Research B Room 307
3420 N. Broad Street Philadelphia, PA 19104
T: 215-707-5986
F: 215-707-7068
hong.wang@temple.edu

Diane E. Omdal
Director, Research Administration
Medical Education :
Research Bldg., Room 3500 N. Broad Street Philadelphia, PA 19104
T: 215-707-0009
F: 215-707-9583
omdale@temple.edu

Electronic Research Administration (eRA)

- eRA; federal systems for pre- and post-award processes, Used by NIH, AHRQ, CDC, FDA, SAMHSA & VA
- eRA Commons; federal systems support grant life cycle from receipt to closeout.
- eRA@TU; part of eRA in TU, grant submission

http://eraapp2.ocis.temple.edu/tu_login/era/what_is_era.asp

Indirect Cost Recovery (ICR) Policies at TUSM

- NIH indirect cost rate for Temple University; **55%**.
- **ICR to PIs; 10% of indirect costs, “16-Fund”**
- ICR to Department/Centers/Institutes; **14%**
- ICR to School; **12.5%**
- ICR to University; **63.5%**

Research Integrity and Compliance

- Institutional Animal and Care Committee (**IACUC**, animal)
- Institutional Review Board (**IRB**, human subjects)
Committee A: receive medical intervention.
Committee B: behavioral and social sciences
- Institutional Biosafety Committee (**IBC**)
- Environmental Health and Radiation Safety,

<http://www.temple.edu/medicine/research/INTEGRITY/index.htm>

11 Research Centers/Institutions in TUSM

1. Cardiovascular Research (**CVRC**), Director, Steven Houser, PhD
 2. **Substance Abuse** Research (**CSAR**), *Director*, Ellen Unterwald, PhD
 3. **Fels** Institute for **Cancer** Research(since 1933), Director Jean-Pierre Issa, MD
 4. Thrombosis Research Center (**SSTRC**), Director, Satya P. Kunapuli, PhD
 5. Inflammation, Translational and Clinical **Lung** Research (**CILR**) Director, Thomas J. Rogers, PhD
 7. Comprehensive **NeuroAIDS** (**CNAC**), NIH founded 2011. Director, Kamel Khalili, PhD
 8. Translational Medicine (**CTM**), Director, Walter Koch, PhD
 9. Center for **Obesity** Research and Education (**CORE**), Director, Gary Foster, PhD
 10. **Shriners** Hospitals Pediatric Research Center (Neural Repair and Rehabilitation). Director, Michael E. Selzer, MD, PhD
 11. Autoimmunity Center (**TAC**), Director, Marc Monestier, PhD
-

Research Core Facilities at TUSM

1. **Central Animal Facility**, \$1/cage/d, *Director, David Schadbach PhD*
2. **Flow Cytometry**, MRB 547, Sorting \$100/h, design or analyses, \$25 or \$35 or 60/h, *Director, Tom Rogers PhD*
3. **Confocal Microscopy**, 503B Kresge \$26/hour, *Director, Bettina Buttaro, PhD*
4. **MicroCT Core**, SkyScan1172 desktop, 404 MERB, ~\$10-43/h analysis, training & service , *Director, Mary Barbe, PhD*
5. **NeuroAIDS Center Cores**, (supported by NIH center grant since 2011 -Basic Science cores I&II, Clinical and Behavioral, International HIV Med & Res, development)
6. **Fox Chase CC facilities at FCCC rates**
<http://www.fccc.edu/research/facilities/index.html>



Comprehensive NeuroAIDS Center (CNAC)

Director – *Kamel Khalili, PhD*

Supported by the National Institutes of
Health, NIMH

MISSION

To improve and extend the public health impact of bench-to-clinic research associated with HIV-induced neurological disease and psychiatric & cognitive disorders.

OBJECTIVES

- To establish a highly needed infrastructure for HIV/AIDS researchers and clinicians
- Identify HIV-1/CNS interactions at the molecular, cellular, and animal model levels
- Developmental funding, mentorship, residency and training opportunities
- Collaborative NeuroAIDS research – TUSM, United States, International
- Discover safe and effective methods for early diagnostics and therapeutics





Comprehensive NeuroAIDS Center (CNAC)

CNAC was founded in August, 2011

It is one of nine NIMH NeuroAIDS Centers in the United States

ORGANIZATIONAL STRUCTURE

Administrative Core

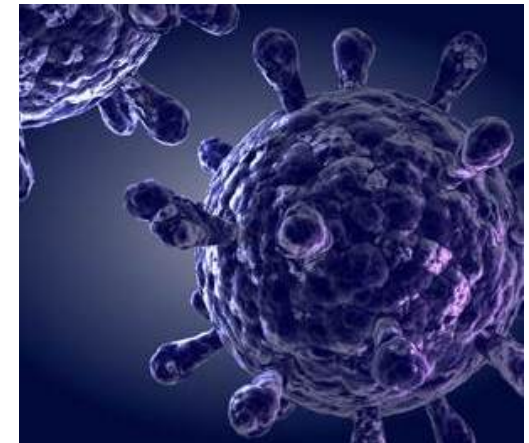
Developmental Core

Basic Sciences I Core

Basic Sciences II Core

Clinical & Behavioral Core

International HIV Medicine and Research Core





Comprehensive NeuroAIDS Center (CNAC)

CNAC Cores and Core Functions

Basic Science Core I

Cell cultures, neurotropic viruses

~ T. Dianne Langford, PhD

Neuroscience, microscopy

~ Michael Selzer, MD, PhD

Proteomics, biomarkers

~ Salim Merali, PhD

Basic Science Core II

Animal model development, histology

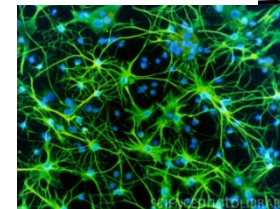
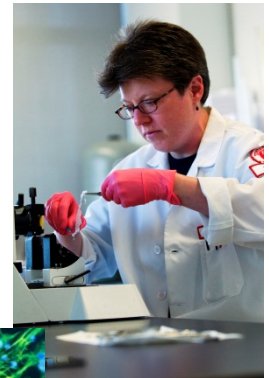
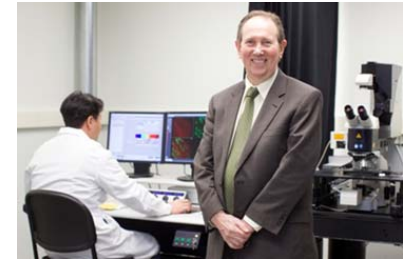
~ Jennifer Gordon, PhD

Neurobehavioral animal models

~ Mary Barbe, PhD

Neuropathology

~ Yuri Persidsky, MD, PhD



For more information, contact cnac@temple.edu or visit our website at <http://temple.edu/medicine/CNAC>



Comprehensive NeuroAIDS Center (CNAC)

CNAC Cores and Core Functions

Clinical & Behavioral Core

Ellen Tedaldi, MD – *Infectious Disease*

Tracy Fischer-Smith, PhD – *Neuroscience of AIDS*

Mary Morrison, MD, MS, FACP - *Psychiatry*

Nancy Minniti, PsysD - *Psychology*

Developmental Core

Jay Rappaport, PhD – *Neuroscience of AIDS*

Shohreh Amini, PhD – *Neuroscience of AIDS*

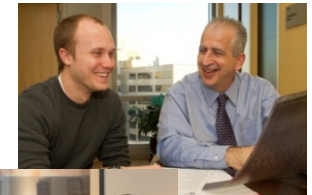
International HIV Research and Medicine

Brian Wigdahl, PhD* – *Neuroscience of AIDS*

Jeffrey Jacobson, MD* – *Infectious Disease*

**Drexel University College of Medicine*

- Freedom Foundation, Bangalore, India



For more information, contact cnac@temple.edu or visit our website at <http://temple.edu/medicine/CNAC>



Comprehensive NeuroAIDS Center (CNAC)

CNAC Developmental Core Project Grant

REQUEST FOR APPLICATION CNAC 2012A: *“Translational Research in NeuroAIDS”*

- Junior faculty and more established investigators conducting novel research in NeuroAIDS are invited to apply for this 1 year grant
- Awards will be made up to \$20,000.00 and provide support for supplies, technical assistance, and Core utilization fees
- Application Deadline is February 15th, 2012
- Visit <http://temple.edu/medicine/CNAC> to access the grant application or contact cnac@temple.edu