



## Ultramodern Temple Lung Center Opens



Gerard J. Criner, MD, pulmonology and critical care section chief, in the waiting room of the Temple Lung Center, which doubles as a smart classroom and features multiple oxygen ports for patients.

The world-class Temple Lung Center now has patient facilities to match its reputation.

In August the lung center moved into a bright, attractive 18,000-square foot outpatient facility on the fifth floor of the new Ambulatory Care Center at Temple University Hospital. The center's purpose: to provide pulmonary patients and their referring physicians with access to the most advanced capabilities for disease management.

to participate in cutting-edge therapies offered through our extensive clinical research trials.

"It's difficult for patients with significant pulmonary disease to go to different offices or floors, so we wanted to make it easy for our patients to access everything they need, whether it be testing or an office exam, in one place," says Gerard J. Criner, MD, pulmonology and critical care section chief. "We also wanted to increase the

tion or other multi-disciplinary medical-surgical conditions, consultations with cardiologists, surgeons and other specialists all take place at the center.

### AMONG THE FEATURES:

- Oxygen hookups conveniently — and unobtrusively — located in both the waiting area and in all 22 patient exam rooms.
- Laminate floors that, compared to carpeting, are healthier for pulmonary patients.

In addition, the state-of-the-art waiting room is outfitted with large flat-panel TV screens and other equipment that allow it to function as a "smart classroom" — for patient and family support groups, disease management lectures and educational programs for community physicians.

For more information about the Temple Lung Center, please call 215-707-4839 or contact Gerard J. Criner, MD, at [gerard.criner@tuhs.temple.edu](mailto:gerard.criner@tuhs.temple.edu).

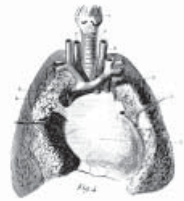
**WE WANTED TO MAKE IT EASY FOR OUR PATIENTS TO ACCESS EVERYTHING THEY NEED, WHETHER IT BE TESTING OR AN OFFICE EXAM, IN ONE PLACE.**

— Gerard J. Criner, MD

In one central location, the center offers office visits, routine pulmonary function and exercise testing, blood draws, electrocardiograms, sleep and non-invasive ventilator equipment instruction, titration and pulmonary rehabilitation. It also conveniently provides patients with the opportunity

amount of tests we could deliver, and to make sure there was enough space so that patients involved in clinical trials could get tested and see their clinical trial investigators and coordinators together in the same area."

For those patients who require evaluation or treatment for lung transplanta-



**PULMONOLOGY,  
ENDOCRINOLOGY,  
NEPHROLOGY  
and  
RHEUMATOLOGY**

*fall 2007*

*This issue of PULSE focuses on the work of four Department of Medicine sections: Pulmonology and Critical Care, as well as Endocrinology, Nephrology and Rheumatology.*

# First-Rate Facilities and Care

*A message from Joel Richter, MD, FACP, MACG  
Richard L. Evans Chair, Department of Medicine*



If you haven't seen Temple University Hospital's facilities in a while, I encourage you to take a look at the photographs in this edition of *Pulse* — or better yet, to visit our campus to get a good look yourself.

As you can see, our world-class clinicians increasingly are able to care for patients in well-appointed and well-equipped offices. Our mission,

as I've previously indicated, is to deliver outstanding clinical care, research and education, and these new additions to Temple's physical plant further all three of these goals.

The Temple Lung Center in the new Ambulatory Care Center offers patients one location where they can both receive outstanding care and participate in clinical research trials. In addition, the waiting room also functions as a state-of-the-art smart classroom where patients can learn more about how to manage their conditions and physicians can participate in C.M.E. programs.

Likewise, the newly remodeled Medical Office Building brings endocrinology, nephrology and rheumatology staff and patients together in one building that houses both clinical and research facilities. The result: more seamless and convenient coordinated care, particularly for patients with multiple disorders, as well as the chance for patients to take advantage of clinical trials.

As a gastroenterologist who sees patients in the Digestive Disease Center, which is also located in the new Ambulatory Care Center, I am prouder than ever of both the facilities and physicians we now offer to our patients.

If you're ever in the area, please check us out.

Contact me at 215-707-5069 or [jrichter@temple.edu](mailto:jrichter@temple.edu).

The entrance to the newly opened Temple Lung Center.



# Endocrinology Launches New Thyroid, Diabetes Programs



Endocrinologist Elias S. Siraj, MD and Colleen Veloski, MD.

The Department of Medicine's endocrinology section has launched new thyroid and diabetes programs.

Taking advantage of new capabilities in the new Medical Office Building (see page 3), the endocrinology section is now using ultrasound to guide fine-needle aspiration (FNA) of suspicious thyroid nodules.

"This capability is moving us towards a more comprehensive, multidisciplinary

Medical Office Building ultrasound machine, we will now be able to perform the ultrasound-guided FNA ourselves. This makes it easier for patients and referring physicians."

To expand its diabetes services, the section also recently recruited Elias S. Siraj, MD, from the Cleveland Clinic.

For outpatients, the section has expanded its available office sessions to accommodate more patients, and is

## IMPROVED DIABETES CONTROL IN THE HOSPITALIZED PATIENT LEADS TO IMPROVED PATIENT OUTCOMES.

— Elias Siraj, MD

approach to the diagnosis and treatment of thyroid nodules and thyroid cancer," says Colleen Veloski, MD, a Temple endocrinologist who recently joined the section and is involved in expanding the thyroid program. "Ultimately, we envision a program that involves coordination and communication among Temple physicians in primary care, endocrinology, surgery, nuclear medicine and radiology."

"Typically," says Veloski, "general practitioners begin the process by palpating a thyroid mass. After obtaining thyroid function tests and a confirmatory ultrasound of the thyroid, patients are referred to endocrinology for further evaluation. With the addition of the

working closely with certified diabetes educators and nutritionists to help patients better manage their disease. "Ultimately the goal is to create a comprehensive outpatient diabetes center, to manage various aspects of diabetes and its complications at a single

*continued on page 4*

### Endocrinology Services

- Diabetes
- Thyroid disorders
- Osteoporosis and other calcium/bone metabolism disorders
- Hyperparathyroidism
- Pituitary gland disorders
- Adrenal disorders
- Hyperlipidemia

# Newly Remodeled Medical Office Building Opens

*Centralizes and integrates endocrinology, nephrology and rheumatology*

A newly remodeled Medical Office Building housing the clinical practice and academic offices of the Department of Medicine's endocrinology, nephrology and rheumatology sections fully opened in mid-September.

The building, located at 3300 N. Broad St., formerly housed the Skin and Cancer Center. In addition to the Department of Medicine facilities, the building houses the Department of Family and Community Medicine, which already was located there, and Temple's Kidney Transplant Program.

For patient convenience, all clinical offices are located on the first floor. Academic offices are on the second floor, while the third floor houses clinical and laboratory research facilities. There are also conference rooms and meeting facilities.

"Patients with complex medical problems and multi-organ disease can be seen by multiple physicians in the same location," says Michael Madaio, MD, nephrology section chief. "For basic laboratory functions there's also an on-site laboratory, so patients don't have to go to the hospital, for instance, to have their blood drawn."

Steven Berney, MD, rheumatology section chief, agrees: "Bringing several subspecialties together makes the communication and interchange between physicians much easier, and that benefits patients. If we need endocrinology advice, they're right here, rather than referring our patient to a distant site at a distant date."

## NEPHROLOGY SERVICES INCLUDE:

- Outpatient kidney transplant biopsies, to determine how well transplants are functioning
- Infusion therapy with immunosuppressant drugs, and
- Intravenous iron and erythropoietin for selected anemia patients.

Also, a new chronic kidney disease program for patients approaching end-stage renal disease includes the coordinated services of nephrologists, social workers and counselors.

the infusion suite adjacent to our offices is particularly convenient for patients," says Berney.

Patient hours are 8 a.m.–5 p.m. For appointments, patients should call

## FOR PATIENTS, IT'S MORE OR LESS ONE-STOP SHOPPING.

— Michael Madaio, MD

## RHEUMATOLOGY SERVICES ON-SITE NOW INCLUDE:

- A DEXA scanner to enhance the diagnosis and care of osteoporosis patients.
- Infusion treatment, including the infusion of:
  - Remicade (infliximab) for patients with rheumatoid arthritis and Crohn's disease
  - Rituxan (rituximab) and Orencia (abatacept) for rheumatoid arthritis
  - IVIG for a variety of immunologically mediated disorders
  - Cytoxan (cyclophosphamide) for patients with systemic lupus

"Since lupus patients require monthly infusions for a period of time, having

215-707-4600. Parking is available either at the Ontario Street garage, north of the Medical Office Building, or in a lot south of the building at West Westmoreland and Broad streets.

For more information, contact Steven Berney, MD, at 215-707-0791 or [berneys@tuhs.temple.edu](mailto:berneys@tuhs.temple.edu) or Michael Madaio, MD, at 215-707-3381 or [madaio@temple.edu](mailto:madaio@temple.edu).

## Medical Office Building Services

Ultrasound  
DEXAscans  
Infusion suite

Section chiefs Steven Berney, MD (rheumatology), Michael Madaio, MD (nephrology) and Elias S. Siraj (endocrinology) outside the newly remodeled Medical Office Building.



# PULSE

Newsletter of the  
Department of Medicine,  
Temple University  
School of Medicine

## 24 Department of Medicine professors Best Doctors in America

Recently 24 members of the Department of Medicine were named to the *Best Doctors in America* 2007–08 list — a 50 percent increase over the previous year.

The honored physicians include:

### BONE MARROW TRANSPLANT

Robert Emmons, MD  
James Gajewski, MD  
Thomas Klumpp, MD  
Kenneth Mangan, MD

### CARDIOLOGY

Alfred Bove, MD, PhD

### ENDOCRINOLOGY

Gunther Boden, MD  
Colleen Veloski, MD

### GASTROENTEROLOGY

Paul Bandini, MD  
Martin Black, MD  
Robert Fisher, MD  
Frank Friedenberg, MD, MEpi  
Benjamin Krevsky, MD  
Larry Miller, MD  
Henry Parkman, MD  
Joel Richter, MD

### GENERAL INTERNAL MEDICINE

Lawrence Kaplan, MD  
Ellen Tedaldi, MD

### HEMATOLOGY

Michael Bromberg, MD  
Koneti Rao, MD  
Ronald Rubin, MD

### INFECTIOUS DISEASE

Bennett Lorber, MD

### PULMONARY

Gerard Criner, MD  
Gilbert D'Alonzo, MD

### RHEUMATOLOGY

Steven Berney

### Endocrinology (continued from page 2)

location,” says Dr. Siraj, the director of clinical endocrinology and program director of the Endocrinology Fellowship Program.

For inpatients, the section has expanded its consulting service in order to manage the care of many more patients, including diabetes patients who are being hospitalized for other conditions. “In the past, diabetes care of hospitalized patients has often been ignored,” says Dr. Siraj. “But there is a growing body of evidence that shows improved diabetes control of hospitalized patients leads to improved patient outcomes.”

As a result, a TUHS multidisciplinary diabetes care committee co-chaired by Siraj and Veloski is finalizing an inpatient diabetes protocol that will be implemented at Temple’s facilities early in 2008.

For more information, contact Elias S. Siraj, MD at 215-707-8951 or [elias.siraj@tuhs.temple.edu](mailto:elias.siraj@tuhs.temple.edu) or Colleen Veloski, MD, at 215-707-7613 or [cveloski@temple.edu](mailto:cveloski@temple.edu).