

Biology

WELCOME TO THE BIOLOGY DEPARTMENT!

There is much to explore and discover in the biological sciences, and our goal is to provide a diversified program that serves students with a breadth of interests. When you graduate with a degree in Biology you will have many career choices, such as Medicine, Physical Therapy, Occupational Therapy, Dentistry, Teaching, Biotechnology, Ecology, Environmental monitoring, Nursing, the pharmaceutical industry, and research in molecular biology, behavior, genetics, biochemistry, cell biology, neuroscience, physiology, microbiology and ecology.

WHAT YOU CAN EXPECT ACADEMICALLY

The Biology Department faculty and staff are committed to supporting your efforts for successful academic achievement. All biology majors take a five-semester sequence of biology gateway courses (One year of Introductory Biology, Genetics, Cell Biology and Ecology). In addition to these five gateway courses, students will choose upper level biology electives from the listing on the right. Students are also required to take one year of general chemistry, one year of organic chemistry, one year of calculus and one year of physics.

Along the way, students will decide whether to pursue a Bachelor of Arts (BA) or a Bachelor of Science (BS) degree. For those interested in medical school or other professional schools either degree is appropriate. A BA gives you greater overall breadth; a BS gives you greater depth in Biology and the sciences.

RESEARCH OPPORTUNITIES

The faculty in the Biology department have wide-ranging research interests, and undergraduate students are encouraged to participate in a research project in a faculty lab. Through this “hands-on” undertaking, students learn the latest scientific research techniques and have the opportunity to experience what science is all about from sometimes tedious tasks that must be completed through the triumph of great results. In some cases, your results may lead to publication in a scientific journal. The Department has a strong research program that has supported undergraduates through programs with the Howard Hughes Medical Institute and the National Science Foundation. Students may also participate in the research activities of the University Neuroscience Program, which integrates many of the departments across the University, or work in laboratories independent of these programs. In general, students at the junior level and beyond have the background to profit most from working in a lab. Upon successful completion of a research project, students can present their work at an annual undergraduate research symposium and graduate with Distinction in Biology. For more information about this program, please contact Dr. Ralph Hillman, 215-204-8857 or e-mail at: rhillman@temple.edu.

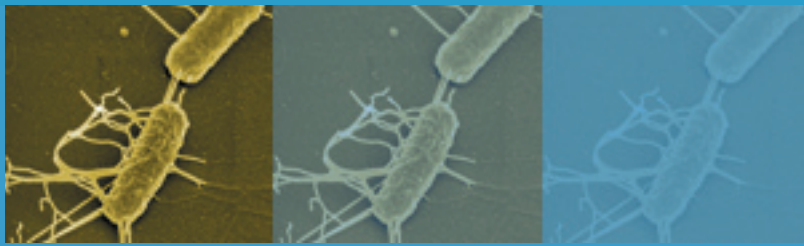
UPPER LEVEL ELECTIVE COURSES

- Animal Behavior
- Biochemistry
- Biotechnology
- Cell Biology
- Cell Proliferation
- Cell Structure & Function
- Comparative Animal Physiology
- Embryology
- Endocrinology
- Evolution
- Freshwater Ecology
- Genetics
- Developmental Genetics
- Human Genetics
- Histology
- Immunology
- Invertebrate Biology
- Mammalian Anatomy
- Mammalian Physiology
- Marine Ecology
- Microbiology
- Molecular Biology
- Neurobiology
- Organogenesis
- Physical Biochemistry
- Principles of Ecology
- Research Techniques
- Tropical Marine Biology
- Virology

Department of Biology

Rm 255 Biology Life Sciences Building 1900 N. 13th Street, Philadelphia, PA 19122

Telephone: (215) 204-8551 | <http://www.temple.edu/biology>



Biology

BIOLOGY LIBRARY

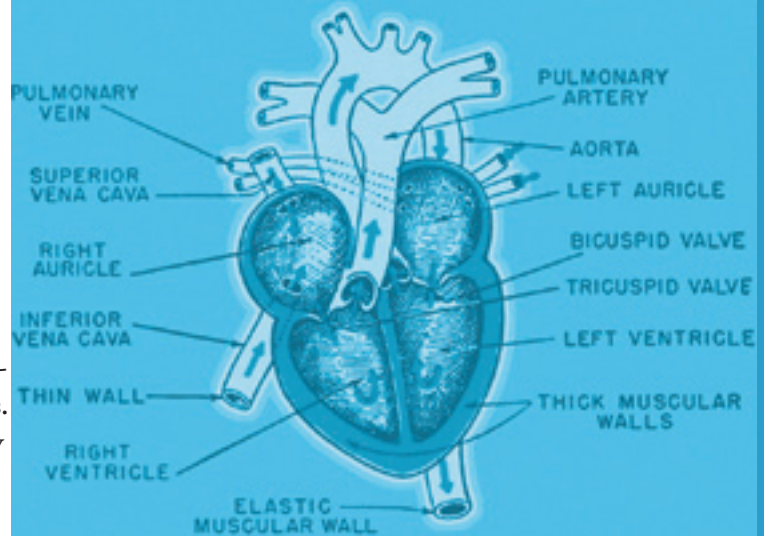
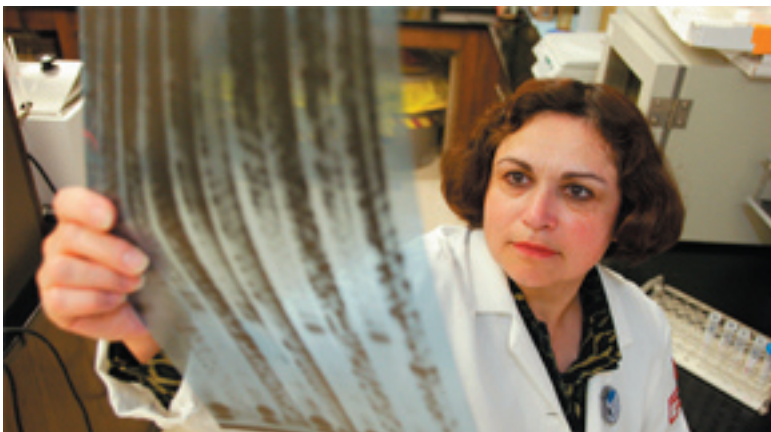
The department library is a valuable resource located in the Bio-Life Sciences building. The facility subscribes to many Science journals and is equipped with on-line computer stations for electronic searches.

STUDENT RESOURCES

Biology majors are encouraged to consult with the departmental faculty advisor when planning their curricula. There also may be occasions when students need some candid advice from other students. The departmental student “ombudsperson” is an upper level biology student who has first hand knowledge of the courses and the faculty in the department. This individual can help new students work out problems that may arise in courses. The ombudsperson will also facilitate faculty/student forums to discuss research, coursework, etc. There is also a Biology Society, formed by students, which can help students navigate the department. In recent years the society has collected information about careers, organized social and volunteer events, and arranged tours as ways to enrich student experience for biology majors.

HOT TOPICS IN BIOLOGY

Every Monday afternoon, the department hosts a lecture by an invited research scientist. These lectures typically focus on the latest discoveries in the discipline and are generally attended by faculty and students from across the University including the Health Sciences Campus.



Research



Biology Life Sciences Building

Department of Biology

Rm 255 Biology Life Sciences Building 1900 N. 13th Street, Philadelphia, PA 19122

Telephone: (215) 204-8551 | <http://www.temple.edu/biology>