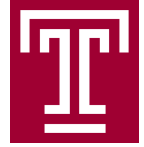


Student Newsletter

Extra, Extra, read all about TUH...
in the NEW
TUH Student Newsletter



Temple University Harrisburg
October, 2009
Volume 11, Issue 1

Featured in this News Letter:

This newsletter is dedicated in memory of Kristin Federici Bowser and her passion to help others.

Kristin was born July 17, 1981 in Dubois, PA.

1999 graduate of Central Christian High School in Dubois, PA.

2003 Kristin graduated from Lock Haven University with a Bachelor of Science degree in Psychology

2008 she received a Masters Degree in Social Work from Temple University Harrisburg.

On August 16, 2008 Kristin married Christopher D. Bowser

Kristin loved sports, especially the Pittsburgh Steelers and loved spending time with her friends and family and her dog Stargell.

This newsletter is dedicated in memory of Kristin Federici Bowser

In Memory of Kristin Federici Bowser

This newsletter is in memory of Kristin Federici Bowser.

Kristin, a.k.a. the original KFed, was a 2008 MSW graduate at Temple University Harrisburg that died Saturday, October 3, 2009 in Harrisburg, PA as a result of an automobile accident at the age of 28.

While at Temple, Kristin was active in the student alliance and advocated for students. Her concern for others and her genuine willingness to help others was clear in all she did.

She was the Program Director of Baby Love at Hamilton Health Center in Harrisburg. She was a licensed social worker in the state of Pennsylvania and was a member of the National Association of Social Workers.

Kristin worked tirelessly for children and their families at

Hamilton Health Center. Co-workers said she was in the process of starting a program to help children and their mothers. She also worked with the Safe Kids Coalition, and regularly attended the Dauphin County Diversity and Poverty Forums.

Kristin was only 28 and doing amazing things for the community. She will be missed.

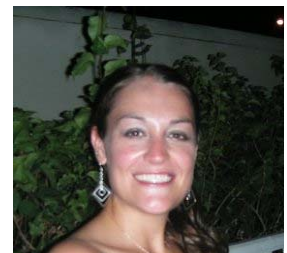
Temple University Harrisburg faculty, staff, alumni and friends are in the process of establishing an award in memory of Kristin.

This annual award would be given to a Temple University Harrisburg student who demonstrates service to the school and service to the profession of Social Work as Kristin did. Kristin had a strong passion for helping others.

In the meantime if you are interested in contributing in Kristin's name, you may send donations to Temple University Harrisburg, 234 Strawberry Square, Harrisburg, PA 17101 (attn: Link Martin).

Please specify that it is for Kristin's award and please inform anyone else that you think may want to know.

In addition, Memorials may be made to Hamilton Health Center, c/o Kristin Federici Bowser Memorial Fund – Social Services Department, P.O. Box 5098, Harrisburg, PA 17110-0098.



*Kristin Federici Bowser
July 17, 1981-
October 3, 2009*



125

1884-2009

YEARS

CELEBRATING ACCESS TO EXCELLENCE

For questions or submissions for the student newsletter contact Anne Eckert, Coordinator of Student Services at 717-232-6400 ext. 422 or via email at ake@temple.edu

For more Temple Facts visit:
www.temple125years.com/

Half-Price Offer for Full-Time Students!

Guilford Press is offering a 50% student discount on books, newsletters, journals, software, and select videos from October 15 to December 31, 2009. (The discount on journal subscriptions is valid all year round!) This is the ideal time to build your permanent personal library of Guilford's essential titles in your field.

Visit www.guilford.com/student or for details.

MSW Student, Stephanie Rakoczy

Was recently published in the New Social Worker Magazine

Congratulations are in order for MSW student Stephanie Rakoczy. Stephanie was published in the New Social Worker Magazine for an article she wrote entitled *Compassion Fatigue in Child Welfare*. Continue reading for a segment from the article.

“Imagine for a moment you are a police officer on a call in which violence is occurring. The people involved have been reported to have a history of drug use. On your way to this call, you are thinking about the potential dangers, including people who could currently be under the influence of a substance and physically harming others.

You find out along the way that among the individuals included in this call are children on the scene who reside in this home. Upon your arrival on this scene, one of the individuals displays a weapon.

Although this scenario doesn't always occur when you go into a situation, you have been trained and have the means to protect yourself. As a police officer, you are able to carry a gun and sometimes other weapons such as a taser gun and mace.

Now imagine you arrive at this scene to discuss how this situation affects the safety of the children.

You have no weapon as you did as a police officer, yet the same safety concerns are present. If you have not yet guessed, you are not the police officer—you are a child welfare social worker.”

To continue reading Stephanie's article go to:

http://www.socialworker.com/home/Feature_Articles/Professional_Development_%26_Advancement/Compassion_Fatigue_in_Child_Welfare/

TUH LIBRARY NEWS

ALL NEW Social Work Book Club

Temple students, alumni, faculty and social workers from the Harrisburg area are invited to a Social Work Book Club and Social Work Information Night lead by Linda Grobman.

Linda Grobman is the editor of *The New Social Worker* magazine. The Social Work Book Club and Information Night will be held on Tuesday, November 17 at 8:00 PM.

Two copies of the book club selection, *Still Alice* are available for loan at the TUH Library.

Linda Grobman will present information about the resources that *The New Social Worker* provides for social workers at 8PM and the online chat will begin at 9:00 PM.

Important Financial Aid Information

Account Access Reminder

Would you like to be more self-sufficient? Who wouldn't? One of the best ways to avoid student loan delinquency is awareness. By creating

an account with AES www.aessuccess.org and NSLDS (National Student Loan Data System) http://www.nsls.ed.gov/nsls_SA/ you can effectively and efficiently manage your

student loans. We recommend that you review your NSLDS record to be sure that you are familiar with each of your lenders and servicers.