

# Using FUGU to Transfer Files on a Macintosh

November 2009



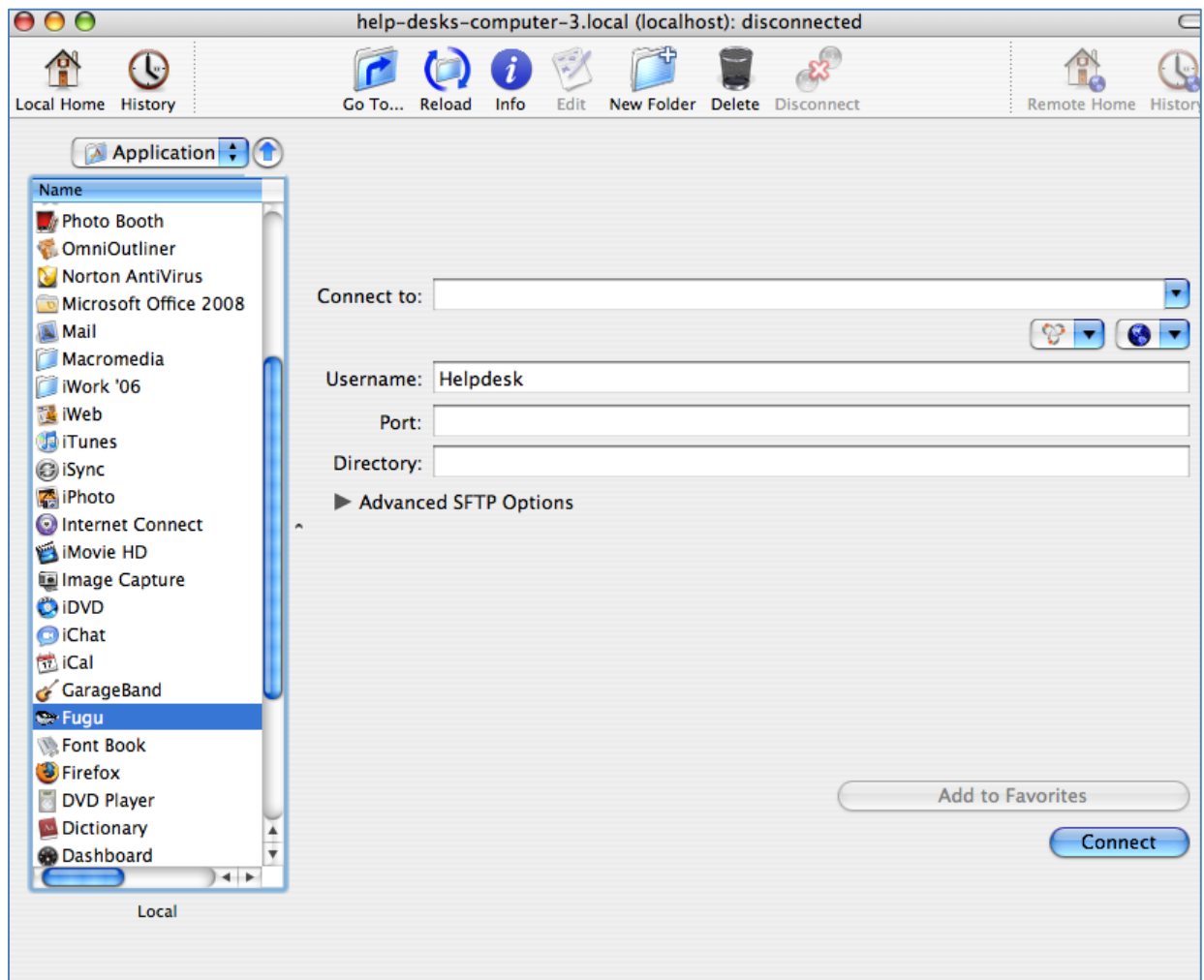
FUGU is a Macintosh application for the secure transfer of files between a Macintosh and a host computer (e.g., the Euler Unix server).

## Starting the Program

To start the program:

Locate FUGU on the MAC HD icon under Applications. By clicking on FUGU, the initial FUGU screen will appear similar to Figure 1 below:

**Figure 1: Initial FUGU Screen**

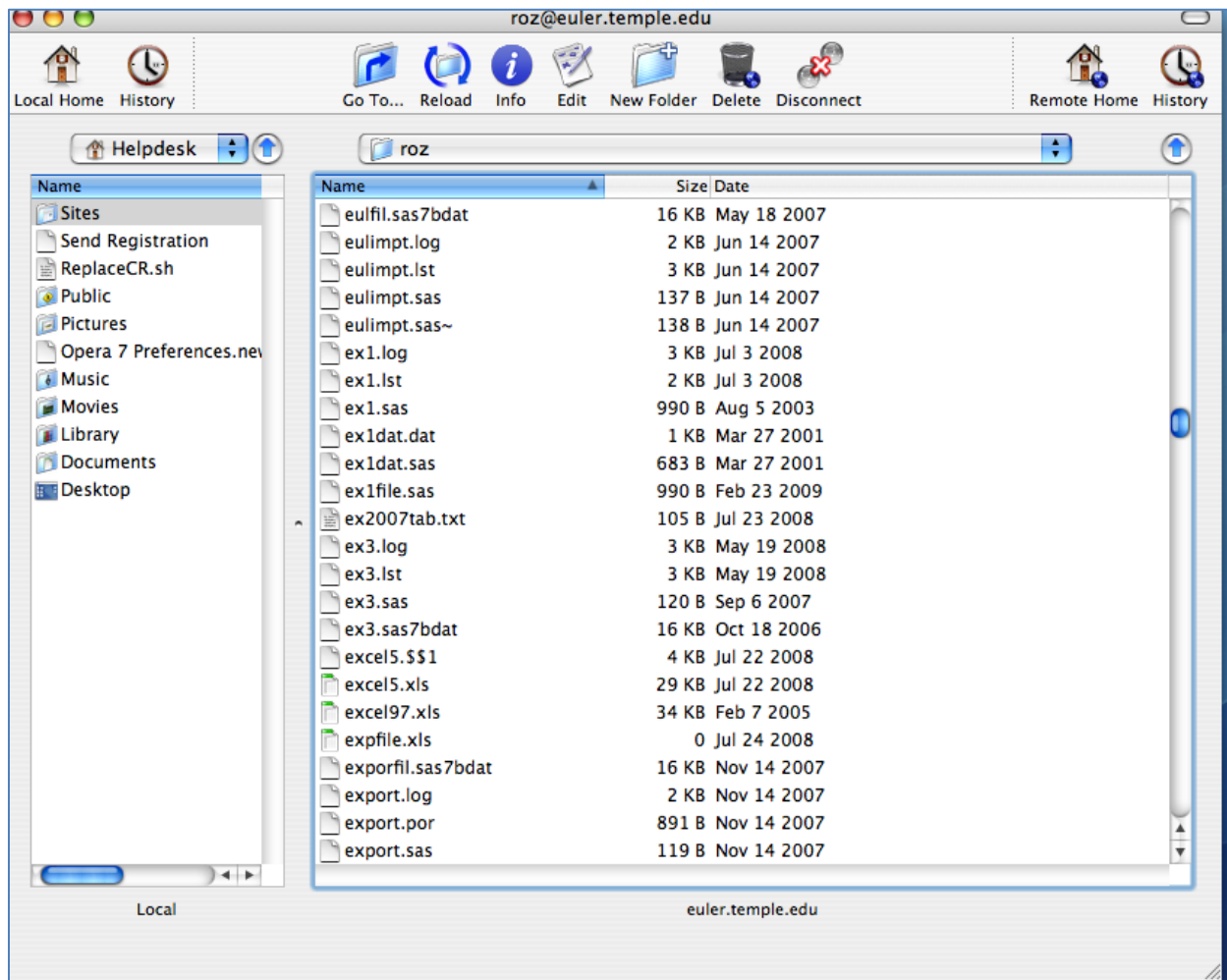


## Connecting to a Host Computer

To access the Euler server, perform the following steps:

1. Insert the host name (e.g., euler.temple.edu) to the right of *Connect to* in Figure 1 above.
2. In the *Username* box, type the user name for the Euler account. In the *Port* box, type **22**. Then press Return.
3. Click the **Connect** button at the bottom right of the FUGU screen.
4. The Euler password will be requested by the next screen. Enter the password and click **Authenticate**. Once the account is authenticated, the FUGU screen will show the files within the Unix account, as seen in Figure 2 below:

Figure 2: FUGU screen with Euler files



## Transferring Files

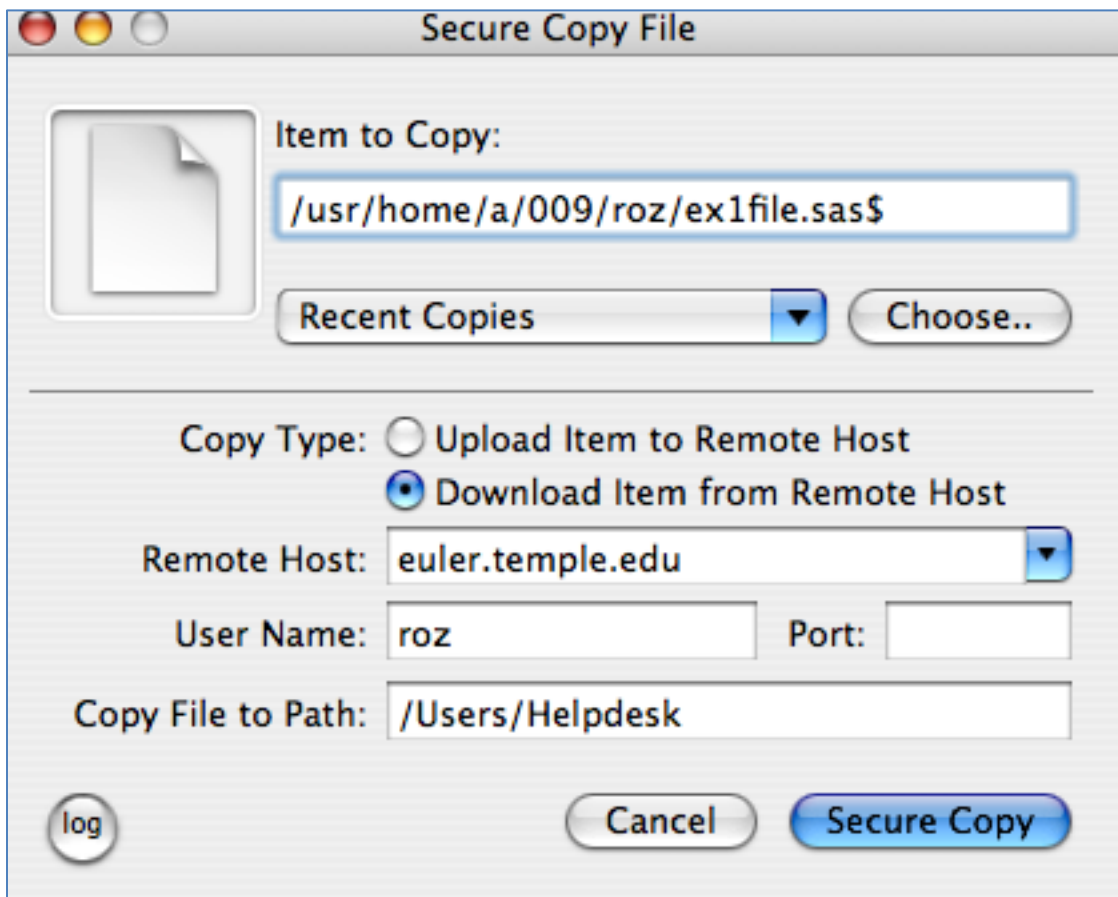
To transfer a file from Euler to the Mac, do the following:

1. Right-click the mouse on one of the Euler files to be transferred to the Mac (e.g., *ex1file.sas*). In the box that appears, click **Download with Secure Copy**.

**Note:** If you wish to transfer a file from the Mac to the Euler system, you would first right-click on a file that is on the Mac and select **Upload with Secure Copy**.

2. Assuming that downloading is desired, the screen in Figure 3 will appear:

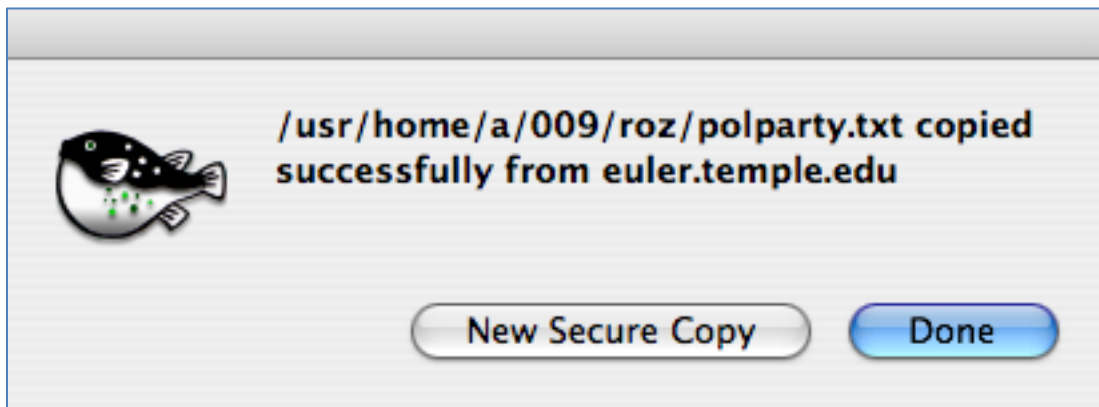
**Figure 3: FUGU Secure Download file screen**



3. The file being transferred is shown within the *Item to Copy* box. The complete specification or path for the file location, (e.g., Root directory) is indicated with the file name. In the *Copy File to Path* box, the Mac folder in which the transferred file will be stored is shown.

4. Click the **Secure Copy** button, shown in the lower right side of Figure 3, in order for the file transfer to begin.
5. When prompted, re-enter the Euler password and click **Authenticate**.
6. If the file transfer is successful, a screen similar to Figure 4 will indicate that the file was copied successfully from the Unix server. Click the **Done** button to conclude the transfer operation. Figure 4 shows the successful download of a second file named *polparty.txt*.

**Figure 4: FUGU Successful File Transfer screen**



### Exiting from the Host Computer and from Fugu

The link to the Unix host will close once the file transfer is completed.

To exit Fugu, click the red button in the upper-left corner of the Fugu screen.

### Other Macintosh Software for Connecting to the Host

If you still need to connect to the server with the Macintosh, but do not plan to transfer files, then you will want to use Terminal software.

Instructions for using Terminal are available at [www.temple.edu/cs/helpdesk](http://www.temple.edu/cs/helpdesk). First click the **Reference Guides** link on the left. Then click **Temple's Unix Systems (Astro and Euler)**.