

Windows 7

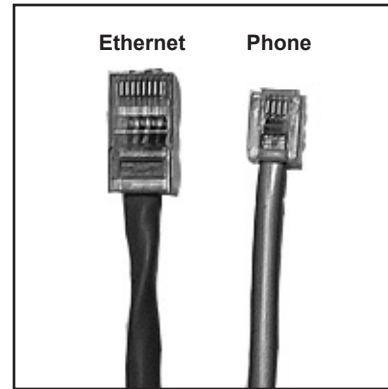
Residence Hall Setup Instructions

- Wired Connection -

Requirements

To use the high-speed wired Internet connection in the residence halls, you will need an Ethernet port in your PC and an Ethernet cable (also known as a Cat 5, Cat 5e, or Cat 6 patch cable). Note that this cable uses RJ45 connectors, which are similar but larger than the connectors used on a phone cable.

You can purchase an Ethernet cable at the Temple University Bookstore (Main, Ambler, or Tyler campus) or at a retail store, such as Radio Shack, Best Buy, or Staples. A 14-foot cable should be long enough.



Ethernet/Phone Cable

Getting Connected

1. Turn on your PC.
2. Plug the Ethernet cable into the Ethernet port on the back or side of your computer.
3. Plug the other end of the cable into the Ethernet jack (usually red) on the wall closest to your assigned bed.
4. Open a Web browser and go to:
<http://getconnected.temple.edu>

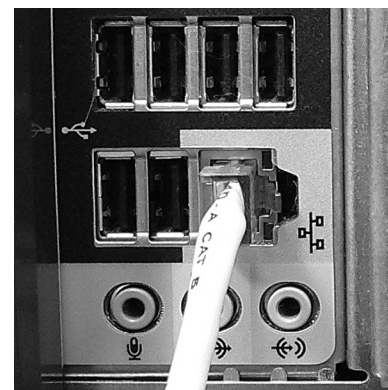
As part of the connecting process, you will be prompted to remove any programs that will conflict with Temple's network connection. You will also be prompted to install Temple's Symantec AntiVirus software and personal firewall software.

Having problems?
See troubleshooting steps on back.

Still having problems?
Contact the Help Desk at 215-204-8000.




Laptop Ethernet Port

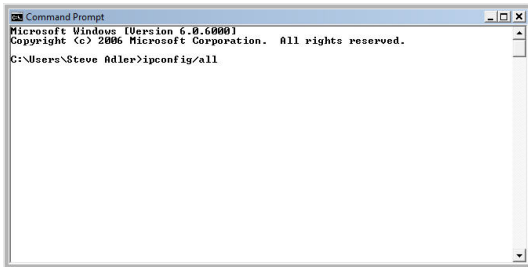


Desktop Ethernet Port

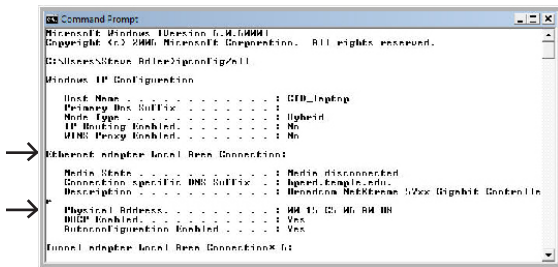
Troubleshooting

Verify that You Have an Ethernet Port

1. Click on the **Start** button .
2. In the Search box, type **cmd** and press Enter.
3. When the command prompt appears, click on the maximize button in the upper-right corner of the window. Then type: **ipconfig /all** and press Enter.




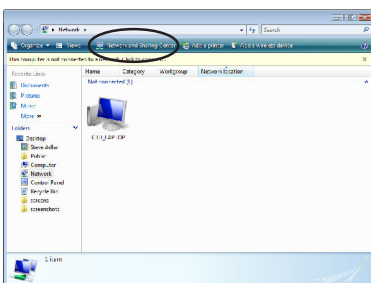
4. Locate the heading, *Ethernet adapter Local Area Connection*. Under this heading, there will be an item listed as Physical Address. The combination of twelve letters and numbers shown next to the Physical Address is the MAC address.



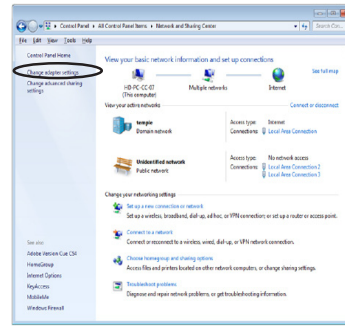
Note: If your computer has a wireless card, it may appear as an Ethernet adapter. Check the Description to make sure you enter the address of the Ethernet adapter and not the wireless, bluetooth, or tunnel adapters.

Check Your Network Settings

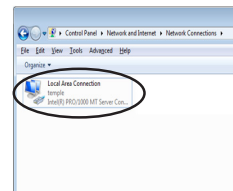
1. Click on the **Start** button  and click on **Network**.
2. At the top of the Network window, click on **Network and Sharing Center**.



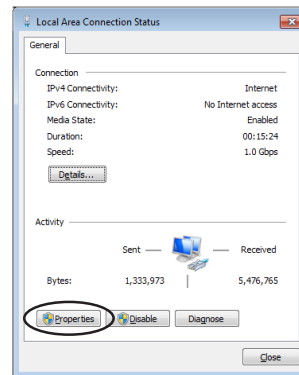
3. On the left side of the screen, click on **Change adapter settings**.



4. Double-click on the **Local Area Connection** icon.



5. In the *Local Area Connection Status* window, click **Properties**.



6. In the *Internet Protocol Version 4 (TCP/IPv4) Properties* window, make sure a black dot appears next to **Obtain an IP address automatically** and also next to **Obtain DNS server address automatically**. Then, click on **OK**.

