

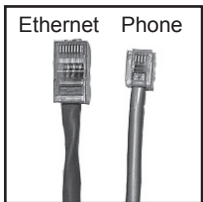
Mac OS X (10.5 or higher) Residence Hall Setup Instructions - Wired Connection -

Requirements:

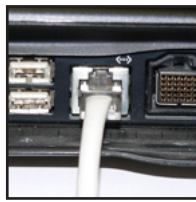
To use the high-speed wired Internet connection in the residence halls, you will need an Ethernet cable (Cat 5, Cat 5e, or Cat 6 patch cable). Note that this cable uses RJ45 connectors, which are similar but larger to the connectors used on a phone cable.

Getting connected:

1. Plug the Ethernet cable into the Ethernet port on the back of your Mac. Plug the other end of the cable into the Ethernet jack (usually red) on the wall closest to your assigned bed.



Ethernet/Phone Cable



Ethernet Port

2. Turn on your Mac.

3. Click the **Apple** icon in the top left corner of the screen and select **System Preferences**

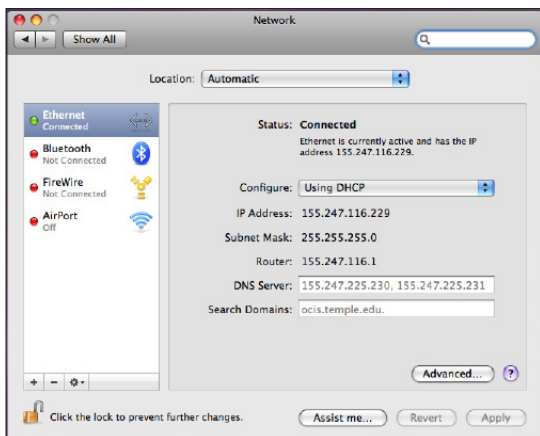
4. In the *Internet & Network* or *Internet & Wireless* section of the *System Preferences* window, click the **Network** icon.

5. Click **Ethernet** in the left panel of the *Network* window.

6. Make sure the *Location* box at the top of the screen is set to **Automatic**.

7. Make sure the *Configure* box is set to *Using DHCP*.

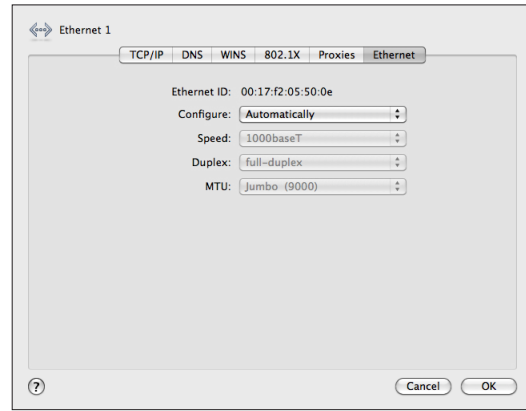
8. Click the **Advanced** button.



9. Click the **Ethernet** tab. Make sure the *Configure* box is set to **Automatically**. Also, write down the *Ethernet ID*. This combination of twelve numbers and letters is the same as your Adapter address, which you will need when applying for Internet service.

Note: If you see an '0', this is a zero and not the letter 'O'.

10. Click **OK** to return to the *Network* window.



Then, close the *Network* window.

11. If you made any changes while performing these steps, click **Apply**. Otherwise, just close the *Network* window.

12. Finally, go to the following web site to register for Internet service: <http://getconnected.temple.edu>

Having problems?

Contact the Help Desk at 215-204-8000.