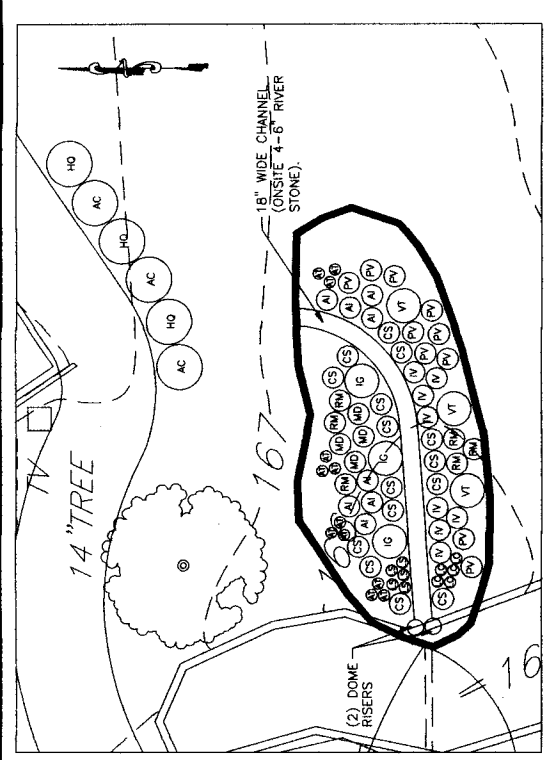


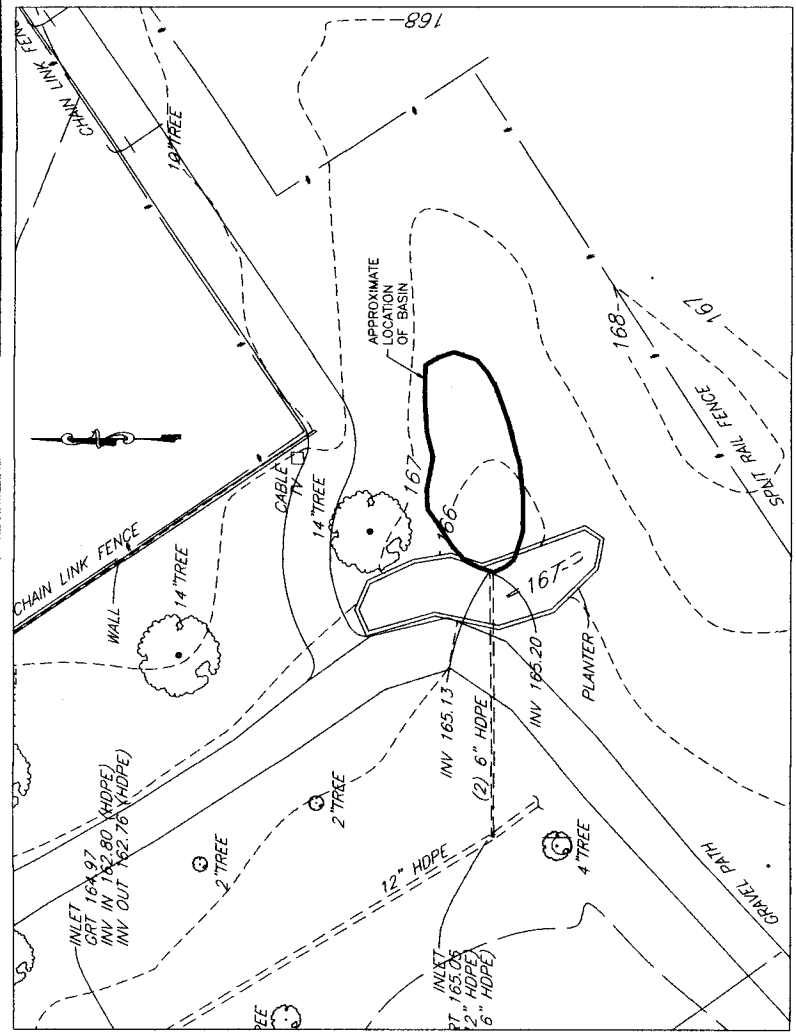
THIS DRAWING DOES NOT INCLUDE NECESSARY PERMITS AND APPROVALS. CONTRACTOR SHALL BE RESPONSIBLE FOR OBTAINING ALL NECESSARY PERMITS AND APPROVALS. CONTRACTOR SHALL BE RESPONSIBLE FOR OBTAINING ALL NECESSARY PERMITS AND APPROVALS.



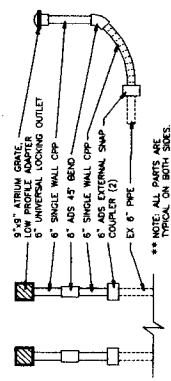
LANDSCAPE PLANTING DETAIL
SCALE: 1" = 5'

ID	Scientific Name	Common Name	Form	Spacing (ft)	Number
HO	<i>Hydrangea quercifolia</i>	Oak Leaf Hydrangea	Shrub	4	3
AC	<i>Amelanchier canadensis</i>	Shadbush	Shrub	4	3
VT	<i>Viburnum trilobum</i>	Cranberry viburnum	Shrub	3	3
IC	<i>Ilex glabra</i>	Hollyberry Holly	Shrub	3	3
PI	<i>Panicum virgatum</i>	Switch grass	Grass	2	10
A	<i>Aegilops incarnata</i>	Stem-misgrass	Flower	2	8
AT	<i>Asterias tuberosa</i>	Butterfly weed	Flower	1	12
RM	<i>Rubus odoratus</i>	Deer Rue	Flower	2	8
LC	<i>Loebelia cardinalis</i>	Cardinal Flower	Flower	1	5
LS	<i>Loebelia spicata</i>	Great blue Lobelia	Flower	1	5
MD	<i>Monarda didyma</i>	Bee balm	Flower	2	4
Y	<i>Yucca filamentosa</i>	Blue flag	Flower	2	4
CS	<i>Carex stricta</i>	Tussock sedge	Sedge	2	15

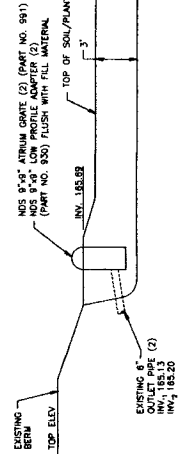
SEQUENCE OF CONSTRUCTION:
 SITE PREPARATION
 1. CALL AT 1-800-249-1716 AT LEAST 72 HOURS PRIOR TO THE START OF CONSTRUCTION TO CONFIRM THE LOCATION OF UTILITIES. CONTRACTOR SHALL EXECUTE TEST PITS AS NECESSARY TO LOCATE EXISTING UTILITIES.
 BASIN AND TRENCH CONSTRUCTION
 1. REMOVE EXISTING DECORATIVE RIVER STONE FROM BASIN.
 2. INSTALL 18" WIDE CHANNEL (ONSITE 4-6" RIVER STONE) TO BE USED FOR BASIN SOIL MEDIA.
 3. INSTALL OUTLET STRUCTURE.
 4. PLACE OVER RIVER STONE OVER SOIL MEDIA. RIVER STONE SHOULD MATCH QUANTITY CUT 6" CHANNEL. 18" WIDE PLACING SHOULD MATCH QUANTITY CUT 6" CHANNEL. 18" WIDE PLACING LEAVE LABEL ON ONE SPECIMEN OF EACH PLANT FOR FUTURE IDENTIFICATION PURPOSES.
 5. IDENTIFY PLANT SPECIMENS WITH SEASONED HARD WOOD CHIP BALSAM (DO NOT USE CYPRESS MULCH).
 GENERAL NOTES:
 THE BOROUGH OF AMBLER OR THE SELECTED CONTRACTOR SHALL MAINTAIN THE LOCATIONS OF EXISTING UTILITIES PRIOR TO ANY MOVING ACTIVITIES.
 THE BOROUGH OF AMBLER OR THE SELECTED CONTRACTOR SHALL MAINTAIN THE LOCATIONS OF EXISTING UTILITIES PRIOR TO ANY CONSTRUCTION WORK.
 MAINTENANCE & MONITORING:
 1. WATER PLANTS REGULARLY UNTIL THEY BECOME ESTABLISHED.
 2. MULCH IN SPRING WITH SEASONED HARDWOOD CHIP MULCH.
 3. PRUNE AND REMOVE DEAD VEGETATION IN SPRING.
 4. WEED AS NEEDED, AT MINIMUM TWICE A YEAR. REMOVE ANY WEEDS THAT ARE NOT ORIGINALLY INSTALLED, ESPECIALLY ANY INVASIVE PLANTS.



SITE PLAN
SCALE: 1" = 10'



ITEM	QTY	DESCRIPTION
NOS LOW PROFILE ADAPTER NOS 930	2 EA	
NOS 991	2 EA	
6" NOS UNIVERSAL LOCKING OUTLET NOS 1286	2 EA	
6" NOS 45° BEND FITTING NOS 0894N	10 LF	
6" NOS SINGLE WALL CPP NOS 0812A	2 EA	



NOTES:
 1. EXISTING BASIN BOTTOM TO PROVIDE 3.5' OF DEPTH FROM INVERT OF INLET PIPE.
 2. SOIL/PLANTING MIX TO BE PLACED UP TO INLET PIPE INVERT.

335 Commerce Drive, Suite 300
 Fort Washington, PA 19034-2623
 Tel: 717.737.1000
 Fax: 717.737.1000

URS

ACEC

PROJECT NO. 1997201

DATE: 7/27/08

SCALE: 1" = 10'

PROJECT: SITE AND LANDSCAPE PLAN

CLIENT: RICCIARDI PARK RAIN GARDEN

BOROUGH OF AMBLER

MONTGOMERY COUNTY, PENNSYLVANIA

SHEET OF