

ALL LOCATIONS OF EXISTING UTILITIES SHOWN IN THIS PLAN ARE ONLY APPROXIMATE. THE CONTRACTOR SHALL VERIFY THE LOCATION AND DEPTH OF ALL UTILITIES PRIOR TO CONSTRUCTION. THE CONTRACTOR SHALL BE RESPONSIBLE FOR OBTAINING ALL NECESSARY PERMITS AND INFORMATION FROM THE UTILITY COMPANIES. THE CONTRACTOR SHALL BE RESPONSIBLE FOR OBTAINING ALL NECESSARY PERMITS AND INFORMATION FROM THE UTILITY COMPANIES. THE CONTRACTOR SHALL BE RESPONSIBLE FOR OBTAINING ALL NECESSARY PERMITS AND INFORMATION FROM THE UTILITY COMPANIES.

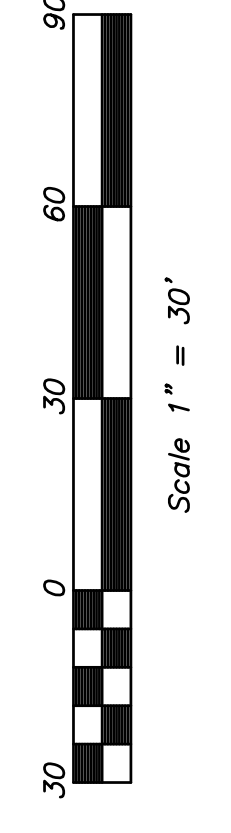


LEGEND

---	PROPERTY LINE
○	IRON PIPE FOUND
○	PIPE
○	SP
○	AS
○	CS
○	CL
○	CD
○	CC
○	CB
○	CA
○	CU
○	MA
○	PA
○	PL
○	PR
○	PI
○	PO
○	PC
○	PD
○	PE
○	PF
○	PG
○	PH
○	PK
○	PL
○	PM
○	PN
○	PO
○	PP
○	PQ
○	PR
○	PS
○	PT
○	PV
○	PW
○	PX
○	PY
○	PZ

TREE IDENTIFICATION

○	MA	MALVA
○	MI	MILVUS
○	MO	MORUS
○	MY	MYRTLE
○	NA	NANUS
○	NU	NYCTAGUS
○	PA	PALMERA
○	PI	PISTIA
○	PL	PLATANUS
○	PO	POPULUS
○	PR	PRUNUS
○	PS	PRUNUS
○	PT	PLATANUS
○	PU	PLATANUS
○	PI	PISTIA
○	PL	PLATANUS
○	PO	POPULUS
○	PR	PRUNUS
○	PS	PRUNUS
○	PT	PLATANUS
○	PV	PLATANUS
○	PW	PLATANUS
○	PX	PLATANUS
○	PY	PLATANUS
○	PZ	PLATANUS



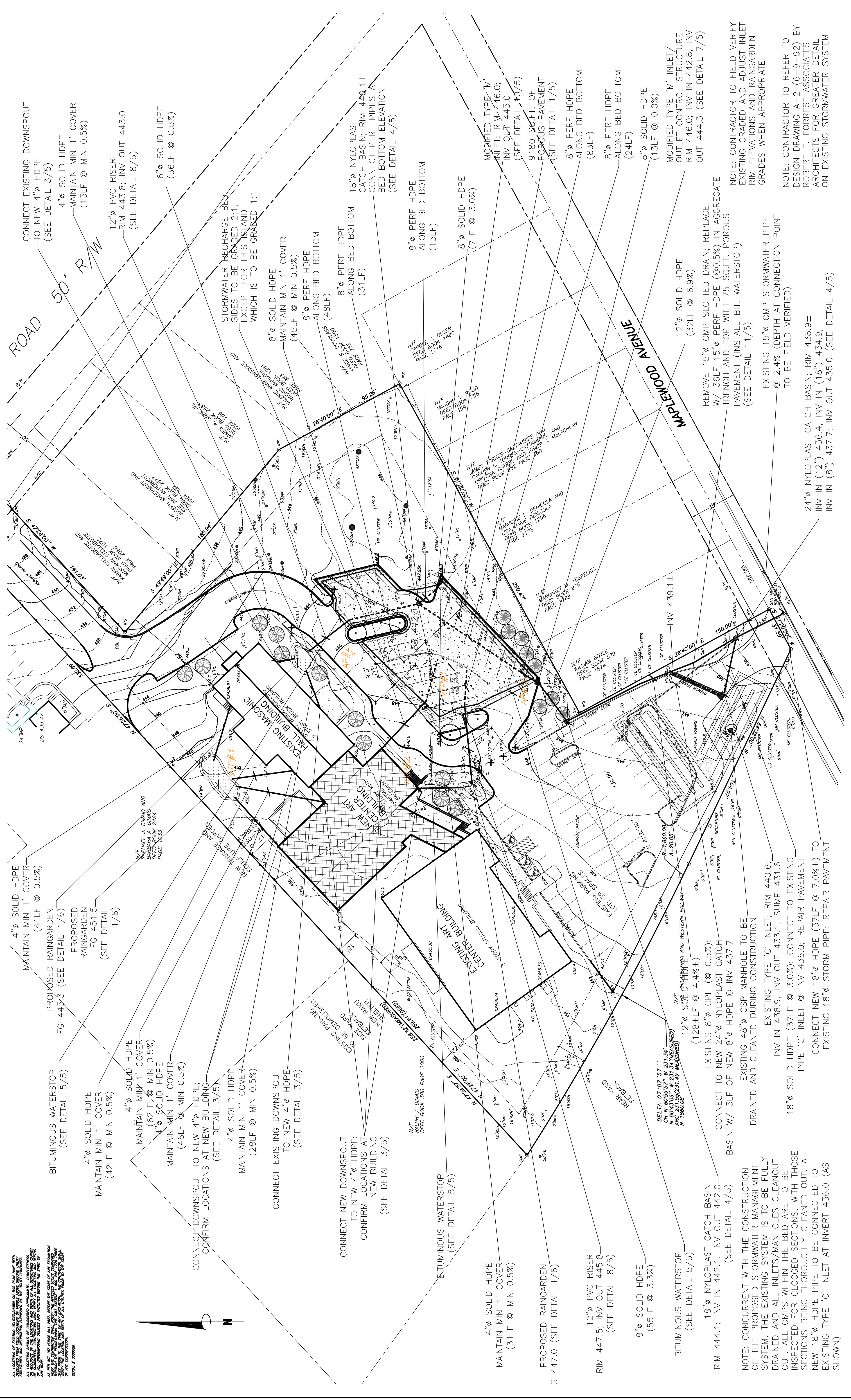
Cahill & Associates
Environmental Consultants

104 S. High Street, West Chester PA, 19382
Phone: 610-696-4150
Fax: 610-696-8608
Web Address: www.thecahill.com

STORMWATER MANAGEMENT PLAN
PROPOSED BUILDING ADDITION FOR THE WAYNE ART CENTER
413 MAPLEWOOD AVE.
RADNOR TOWNSHIP • DELAWARE COUNTY • PENNSYLVANIA

MOMENEY AND ASSOCIATES, INC.
CIVIL ENGINEERS & LAND SURVEYORS
924 COUNTY LINE ROAD BRYN MAWR, PA 19010 (610) 527-3030

REVISIONS
DATE: FEBRUARY 10, 2003
SHEET 4 OF 11
SCALE: 1" = 30'
FILE NO: 99162



NOTE: CONTRACTOR TO FIELD VERIFY EXISTING GRADED AND ADJUST INLET RIM ELEVATIONS AND RAINGARDEN GRADES WHEN APPROPRIATE

NOTE: CONTRACTOR TO REFER TO DESIGN DRAWING A-2 (6-9-92) BY ROBERT E. FORREST ASSOCIATES ARCHITECTS FOR GREATER DETAIL ON EXISTING STORMWATER SYSTEM

REMOVE 15" CMP SLOTTED DRAIN; REPLACE W/ 36LF 15" PERFORATED HDPE (0.5%) IN AGGREGATE TRENCH AND TOP WITH 75 SQ.FT. POROUS PAVEMENT (INSTALL BIT. WATERSTOP) (SEE DETAIL 11/5)

EXISTING 15" CMP STORMWATER PIPE @ 2.4% (DEPTH AT CONNECTION POINT TO BE FIELD VERIFIED)

24" NYLOPLAST CATCH BASIN; RIM 438.9± INV IN (12") 436.4, INV IN (18") 434.9, INV IN (8") 437.7; INV OUT 435.0 (SEE DETAIL 4/5)

NOTE: CONCURRENT WITH THE CONSTRUCTION OF THE PROPOSED STORMWATER MANAGEMENT SYSTEM, THE EXISTING SYSTEM IS TO BE FULLY DRAINED AND ALL INLETS/MANHOLES CLEANOUT INSPECTED FOR CLOGGED SECTIONS. WITH THOSE SECTIONS BEING THOROUGHLY CLEANED OUT. A NEW 18" HDPE PIPE TO BE CONNECTED TO EXISTING TYPE 'C' INLET AT INVERT 436.0 (AS SHOWN).

CONNECT NEW DOWNSPOUT TO NEW 4" HDPE; CONFIRM LOCATIONS AT NEW BUILDING (SEE DETAIL 3/5)

CONNECT EXISTING DOWNSPOUT TO NEW 4" HDPE (SEE DETAIL 3/5)

CONNECT NEW DOWNSPOUT TO NEW 4" HDPE; CONFIRM LOCATIONS AT NEW BUILDING (SEE DETAIL 3/5)

CONNECT EXISTING DOWNSPOUT TO NEW 4" HDPE (SEE DETAIL 3/5)

CONNECT EXISTING DOWNSPOUT TO NEW 4" HDPE (SEE DETAIL 3/5)

CONNECT EXISTING DOWNSPOUT TO NEW 4" HDPE (SEE DETAIL 3/5)

CONNECT EXISTING DOWNSPOUT TO NEW 4" HDPE (SEE DETAIL 3/5)

CONNECT EXISTING DOWNSPOUT TO NEW 4" HDPE (SEE DETAIL 3/5)

CONNECT EXISTING DOWNSPOUT TO NEW 4" HDPE (SEE DETAIL 3/5)

CONNECT EXISTING DOWNSPOUT TO NEW 4" HDPE (SEE DETAIL 3/5)

CONNECT EXISTING DOWNSPOUT TO NEW 4" HDPE (SEE DETAIL 3/5)

CONNECT EXISTING DOWNSPOUT TO NEW 4" HDPE (SEE DETAIL 3/5)

CONNECT EXISTING DOWNSPOUT TO NEW 4" HDPE (SEE DETAIL 3/5)

CONNECT EXISTING DOWNSPOUT TO NEW 4" HDPE (SEE DETAIL 3/5)

CONNECT EXISTING DOWNSPOUT TO NEW 4" HDPE (SEE DETAIL 3/5)

CONNECT EXISTING DOWNSPOUT TO NEW 4" HDPE (SEE DETAIL 3/5)

CONNECT EXISTING DOWNSPOUT TO NEW 4" HDPE (SEE DETAIL 3/5)

CONNECT EXISTING DOWNSPOUT TO NEW 4" HDPE (SEE DETAIL 3/5)

CONNECT EXISTING DOWNSPOUT TO NEW 4" HDPE (SEE DETAIL 3/5)

CONNECT EXISTING DOWNSPOUT TO NEW 4" HDPE (SEE DETAIL 3/5)

CONNECT EXISTING DOWNSPOUT TO NEW 4" HDPE (SEE DETAIL 3/5)

CONNECT EXISTING DOWNSPOUT TO NEW 4" HDPE (SEE DETAIL 3/5)

CONNECT EXISTING DOWNSPOUT TO NEW 4" HDPE (SEE DETAIL 3/5)

CONNECT EXISTING DOWNSPOUT TO NEW 4" HDPE (SEE DETAIL 3/5)

CONNECT EXISTING DOWNSPOUT TO NEW 4" HDPE (SEE DETAIL 3/5)

CONNECT EXISTING DOWNSPOUT TO NEW 4" HDPE (SEE DETAIL 3/5)

CONNECT EXISTING DOWNSPOUT TO NEW 4" HDPE (SEE DETAIL 3/5)

CONNECT EXISTING DOWNSPOUT TO NEW 4" HDPE (SEE DETAIL 3/5)

CONNECT EXISTING DOWNSPOUT TO NEW 4" HDPE (SEE DETAIL 3/5)

CONNECT EXISTING DOWNSPOUT TO NEW 4" HDPE (SEE DETAIL 3/5)

CONNECT EXISTING DOWNSPOUT TO NEW 4" HDPE (SEE DETAIL 3/5)

CONNECT EXISTING DOWNSPOUT TO NEW 4" HDPE (SEE DETAIL 3/5)

CONNECT EXISTING DOWNSPOUT TO NEW 4" HDPE (SEE DETAIL 3/5)