



## PEN & TROWEL *Inside*



## *In* BLOOM

The Landscape Arboretum Planning Process is in Motion.



# 15



THE

# THE AMBLER

Temple University

SPRING 2003

## *State-of-the-Art* Learning Center Construction Begins

The first major construction project at Temple University Ambler since 1983 (Dixon Hall) will begin this summer. The new Temple University Ambler Learning Center is expected to open in January 2005.

"This new 72,000-square-foot building will be a focal point for state-of-the-art teaching technology and provide new instructional space for use by many academic departments," said Dean Dr. Sophia Wisniewska. "A building like this is long overdue for our campus. We're looking forward to having a modern facility that can improve the educational experience for our students."

The predominantly state-funded \$17 million capital project, to be located between the library and dining hall, will feature "smart classrooms," fully integrated technology, and a 300-seat auditorium. A final, detailed submission of plans for the facility – a project that has been prioritized by Temple University President David Adamany – was presented to the state of Pennsylvania at the beginning of 2003.

The new auditorium will be the first structure built on campus with the performing arts specifically in mind since the Temple University Music Festival and Institute – which once drew thousands to the Ambler Campus – closed in 1980. Initially conceived as part of the primary Learning Center building, the auditorium/lecture hall will be a separate building that is connected to the main structure.

"The change was primarily for acoustic and aesthetic reasons," said Dr. Phil Yannella, Associate Dean for Academic Affairs.

While it will be used as a lecture hall initially, with additional funding, the auditorium could be put to good use by Temple's Esther Boyer College of Music, and the theater and performing arts departments, and may also be available to community groups wishing to utilize the space.

Having a new auditorium, which will include an 800-square-foot stage, will be a welcome change for the campus, according to Wanda Lewis-Campbell, Assistant Dean for Student Life.

"For many years now, the only location we have been able to host guest speakers, musical performances, theater productions and other similar events has been Bright Hall Lounge," she said. "Our students are extremely excited about the prospect of having a modern facility, with proper lighting and sound system, in which to enjoy these presentations."

In addition to 10 smart classrooms, PC and Mac labs, and a math, science, and writing center, the Learning Center will include a video editing lab available for all students and a visual arts studio – one part artist's studio and one part

art education classroom.

"The Learning Center will also have a Scholars Information Center, a computer resource center where students can do homework, study, send e-mail, and work on school projects," Dean Wisniewska said. "There will be an Instructional Support Center for faculty and staff. That is essentially a high-tech computer lab

*Continued on page 2*

## NAMING OPPORTUNITIES

**Ambler College has identified several opportunities to create a permanent legacy or memorialize a loved one within the new Ambler Learning Center. Such gifts will have a significant and lasting impact on the campus. The following are some of the features of the Learning Center that may be named in recognition of charitable gifts to support the construction and furnishing of the building:**

**Learning Center Building (1)**

**State-of-the-Art Learning Center/  
Performing Arts Auditorium (1)**

**Computer Learning Laboratories (7)**

**Painting and Drawing Room (1)**

**"Smart" Classrooms (10)**

**Learning Center Gardens (1)**

**Bricks in the Gardens (many)**

**For more information, please contact  
Kathy Beveridge at 215-283-1306.**

*The Learning Center will include 10 "smart" classrooms, 10 computer labs, and a state-of-the-art lecture hall/performing arts center.*



# From the Desk of the Dean



Welcome to the first issue of *The Rambler*, the newsletter for alumni and friends of Temple University Ambler College. There has been a great deal of activity on campus recently.

Our Graywater Gardens exhibit was a rousing success at the 2003 Philadelphia Flower Show. Temple University Ambler Landscape Architecture and Horticulture Department students won Best of Show in the Academic Educational category. The Department was also awarded the prestigious Bulkley Medal of the Garden Club of America. I salute our landscape architecture and horticulture students and faculty for a job well done!

Two major construction projects are underway that will transform the campus. Work will soon begin on the 72,000-square-foot Ambler Learning Center to be located between the Library building and the Dining Center. Construction has already begun on new athletic fields across Meetinghouse Road that will serve as the home of Temple's baseball, softball, and men's and women's soccer teams.

These projects will provide a shot in the arm for the entire Ambler campus community, enhancing our classroom and academic support facilities, and creating a buzz on campus that will no doubt add to the atmosphere outside the classroom for students.

One of the most important developments on the administrative side this past year was the appointment of Kathy Beveridge as Ambler's Director of Development. Having a full-time employee actively working to initiate and strengthen our relationships with alumni, friends, and the professional community is a luxury we have not had during my tenure at Ambler.

The Rambler is a direct result of Kathy's efforts to better inform the audiences above. From browsing this first issue and discussing Kathy's plans for future editions, I think this publication will provide you with an insider's viewpoint of campus news and activity.

An issue I would like to address in this column is the concept of Ambler College. Many folks have asked what this designation means. The easiest way to explain the current structure is that Ambler is now both a campus and a college.

The campus continues to serve as a teaching site for numerous Temple degree programs in fields such as education, business, liberal arts, science, and much more. Ambler College is the home of the three academic programs housed entirely on this campus: community and regional planning, horticulture, and landscape architecture. Complementing these College academic programs are two resources for the campus and the community: the Center for Sustainable Communities and Landscape Arboretum (both featured in this issue).

The College designation has provided us with more autonomy to develop our current College programs, and to focus on conceiving new degree programs which mesh with our emerging mission of responding to the social, economic, and environmental challenges of today and tomorrow.

We are actively seeking ways to create distinctive classroom and research programs at Ambler that explore the relationships between humanity and nature.

The Rambler is a publication that is meant to inform college and campus alumni – including those of you who completed a portion of your coursework at Ambler. We consider all of you part of the Ambler family!

I look forward to communicating with you on a regular basis in *The Rambler*.

I am always eager to receive feedback and ideas. If you have ideas, questions, brainstorming, or just want to talk, feel free to call my office at 215-283-1227, or drop an e-mail to my attention at [ambler@temple.edu](mailto:ambler@temple.edu).

– Sophia Wisniewska, Ph.D., Dean

# Welcome

## Ambler Learning Center

*continued from page 1*

where faculty and staff can receive training on computer software or find assistance for projects such as creating a website."

While the campus plans the state-of-the-art interiors of the Learning Center, students in the Landscape Architecture program can take pride in their contributions to the grounds surrounding this centerpiece structure.

"During the fall semester, students in the landscape architecture senior studio created detailed landscape plans for the Learning Center," Dr. Yannella said.

The plans were presented to President Adamany for review in February with an eye toward taking the students' ideas from the planning stage to reality.

Assistant Professor Skip Graffam said 15 students broke into teams that applied themselves to four distinct concepts for the landscape.

"All of the plans incorporated some similar aspects, but each had a primary focus. The first centered on the idea of a traditional campus plan with outdoor spaces," he said. "The second highlights the natural features, native geology, and native plants. The third looked at developing an outdoor plaza concept and creating dining spaces, while the fourth took a more artistic approach, reacting to the plan of the building."

Graffam said the first phase of the project centered on integral details such as grading, stormwater requirements, and accessibility for people who are physically challenged. The second phase, he said, focused on "how the building will fit into the campus as a whole."

"We looked toward creating an identity for the campus. The students really looked at the Learning Center as being a very 'student-centric' space, which was exciting for them," he said. "They explored ways to increase residential life, creating outdoor gathering and study spaces."

Be sure to get a close-up look at the student's landscape designs for the Learning Center at Temple University Ambler EarthFest 2003 (See related article, page 15). To follow the progress of the Learning Center, visit the News section of the Temple University Ambler website at [www.ambler.temple.edu](http://www.ambler.temple.edu).

# The Ambler Annual Fund

## A Simple Choice for Friends of Temple Ambler

The simple truth about the Annual Fund at Temple University Ambler College is that every dollar you give makes Ambler a better place to study, work, and live. To make it simpler to remember this truth, we are changing its name to “The Ambler Annual Fund.”

The Ambler Annual Fund benefits students on the Ambler campus, shared resources like the Landscape Arboretum, and programs like Community and Regional Planning, Landscape Architecture, and

“We want all Temple alumni with ties to Ambler to be part of this community.”

— Dean Dr. Sophia Wisniewska

### Have you ever wondered?

#### **What is the Annual Fund?**

Unrestricted gifts made by Temple alumni and friends that support the areas of greatest need within the University's schools, colleges, and programs. In general, the Annual Fund is used for student aid, new academic initiatives, research projects, and supplies.

#### **Why does Temple need my support?**

Tuition and state funds alone do not cover the cost of a student's education. In fact, only a portion of the money required to educate Temple students is covered by these sources. The difference is made up by gifts from dedicated people like you.

#### **How can I participate?**

However you like. Gifts to the Annual Fund can be made in cash, securities, or even property transfers. Cash gifts, made by check or credit card, help Temple now and at the same time qualify for a tax deduction. Simply complete and return an Annual Fund form or make your gift now online! Visit [www.alumni.temple.edu](http://www.alumni.temple.edu).

Horticulture. It supports the areas of greatest need within the College and on the campus. These important priorities include student aid, new academic initiatives, strategic planning, research projects, and supplies.

The Ambler Annual Fund is a versatile tool in the hands of Dean Dr. Sophia Wisniewska, who has responsibility for leading Ambler College with limited resources. It gives her the flexibility to pursue exciting opportunities when they arise, such as building the groundwork for a new study abroad program or bringing in an expert consultant to assist with strategic planning.

Gifts to the Ambler Annual Fund also send an important message to other Temple alumni, and people everywhere, that you value the education you received at Temple

#### **Does my gift make a difference?**

Absolutely! Your gift, whatever the size, is a vote of confidence in Temple and encourages others to give. And every gift enables Temple to do even more for its students.

#### **Who is Telefund?**

Full-time students working to support their own education by raising money for Temple. Be kind to our callers – remember, you were a student once too!

#### **Where does my money go?**

Wherever you choose. You can designate your gifts to an individual school or college, athletics, the library, scholarships, or unrestricted University use. One hundred percent of your gift goes to the area you choose, and every gift helps keep Temple a great place to study and live.

#### **What is the Annual Fund?**

It's the difference you make. As a student at Temple, the people you learned from, the connections you made, and the resources you used made all the difference. Today, you can make the difference for Temple students by giving to the Annual Fund.

Ambler. It says you believe in the importance of our mission to deliver quality educational programs and to create a true community of Ambler faculty, students, staff, alumni, and friends. “We want all Temple alumni with ties to Ambler to be part of this community,” said Dean Wisniewska.

So, when Temple University students call to ask for your gift to the Annual Fund – designate The Ambler Annual Fund. When you're filling out an envelope for your gift to the Annual Fund – write in “The Ambler Annual Fund.” And when you're making a gift online at [www.alumni.temple.edu](http://www.alumni.temple.edu), select “Ambler College” from the list of Temple University Schools and Colleges that can benefit from your pledge. Then your entire gift will contribute to the welfare of Temple Ambler through The Ambler Annual Fund.

### WHAT'S YOUR RATE?

**For as little as \$5,000, you can earn up to 11.5% on your money and help tomorrow's Temple Ambler students!**

**Today's low interest rates on CDs and other investments give you a great reason to consider a Charitable Gift Annuity with Temple University. Your Charitable Gift Annuity will pay you an excellent rate of return and the proceeds will provide for generations of Temple Ambler students.**

**For a confidential illustration and a copy of our brochure on Charitable Gift Annuities, please contact the Office of Planned Giving.  
phone: 1-800-822-6957  
email: [scott.janney@temple.edu](mailto:scott.janney@temple.edu)  
web site: [www.alumni.temple.edu/giving/how](http://www.alumni.temple.edu/giving/how)**

*Every gift, whatever the size, counts for Ambler!*

of the Future

# Advances in Research

**Dr. Elizabeth Sluzis, Associate Professor of Horticulture and Sinclair Adam, Adjunct Horticulture Instructor:** With a \$5,100 grant from the Perennial Plant Association, Dr. Sluzis and Sinclair Adam have begun studying the nitrogen nutrition needs of 10 native herbaceous plant species. Nearly all major greenhouse plants' nutritional needs have been well documented, according to Adam. Perennial plants, however, have not received the same attention.

**Valencia Libby, Associate Professor of Landscape Architecture & Horticulture:** Professor Libby has been awarded a Fulbright Scholarship to teach at the University of the Algarve in Faro, Portugal, during the next academic year. The award will be featured in the next issue of *The Rambler*.

**Dr. Harriet Freidenreich, Professor of History:** Professor Freidenreich has published a new book entitled "Female, Jewish, and Educated: The Lives of Central European University Women" (Indiana University Press, 2002). "Female, Jewish, and Educated" presents a collective biography of Jewish women who attended universities in Germany or Austria before the Nazi era.

**Dr. Lolly Tai, Landscape Architecture and Horticulture Department Chair, and Skip Graffam, Assistant Professor of Landscape Architecture:** Dr. Tai and Professor Graffam will present a paper on "Promoting Sustainable Designs Through Design/Build Projects" at the Environmental Design and Research Association (EDRA) conference in Minneapolis, MN, in May. This year's Graywater Gardens exhibit at the Philadelphia Flower Show will be presented as a primary example. Ambler's design/build curriculum was also the focus of an article written by Dr. Tai and Associate Professor of Landscape Architecture Baldev Lamba for the March issue of *Landscape Architecture* magazine.

**Baldev Lamba, Associate Professor of Landscape Architecture:** Professor Lamba will present a paper on the interdisciplinary Urban Design Workshop (UDW) at Temple University at the EDRA conference in May. The Urban Design Workshop was formed to analyze and propose solutions to complex physical design problems that emerge in restructuring formerly industrial city neighborhoods, "and to advocate for making places that are sustainable, meaningful, and humane," according to Professor Lamba.

# A Remarkable Student, A Remarkable Gift

Temple University Ambler alumnus Rodney Bierhuizen was quite literally born to the field of horticulture.

A 2002 graduate with a B.S. in Horticulture, Rodney has been deeply involved in his family's business, Sunrise Greenhouses in Vineland, Ontario, since age five.

"The greenhouses, ornamental flower production, were a part of my life every day," he said with a smile. "I always wanted to be like my dad."

Chosen as the 2002 Temple University undergraduate student Commencement speaker, the first Ambler College student bestowed with this honor, Rodney placed a fitting cap on an exemplary career as both scholar and athlete at Temple.

For some students, that might have been the end of the story – a fond farewell to his old alma mater.

Not Rodney.

With a generous gift from his parents at graduation, some students, deservedly, would think about a down payment on a car or a nice vacation getaway.

Not Rodney.

"Rodney became a real part of this place when he was here. He was a fabulous horticulture student who somehow managed to do everything between classes, sports, and life," said Landscape Architecture and Horticulture Department Manager Lisa Blum. "He's a modest kind of guy with a real commitment to horticulture. After his years here, he and his family felt it was important to give something back."

Bierhuizen isn't just leaving a lasting memory for his teachers. In the coming years, he has left a legacy that will help students in horticulture during their senior year thanks to an astounding donation of \$10,000 over a period of four years for a special "research award."

The Bierhuizen Undergraduate Research Award will provide an annual award for a student majoring in Horticulture to help defray the costs associated with his/her Senior Research Project. The first research award will be given in 2006.

"My parents asked what I would like for a graduation gift and donating a scholarship was my answer. It feels good to give back

and hopefully provide someone else with the same opportunities I had," Bierhuizen said. "I also wanted to support research. There are a lot of people out there with good ideas and this scholarship could help many of them develop those ideas."

Determination, diligence, and perseverance are all good words to describe Rodney's approach to school, sports, and life in general.

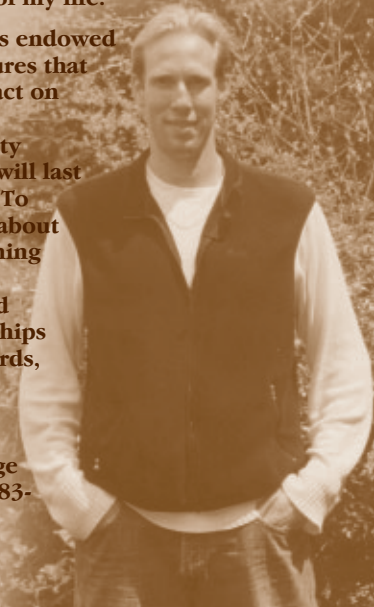
A talented athlete, he turned his attention to rowing while attending Denis Morris High School. He was among the top five junior oarsman in Canada at the time of his high school graduation. It was his love of the sport that eventually led him to Temple.

His four-year varsity career with the Owls crew team was certainly illustrious. He and his teammates accumulated an unprecedented number of wins, including four consecutive national men's eight championship titles. Team captain in 2001, Bierhuizen was awarded the Dave Zinkoff Memorial Inspiration Award in 1999, 2000, and 2001; and the Most Valuable Oarsman Award in 2001.

Upon graduation, Bierhuizen returned to his Canadian home for the summer before beginning a job with PKM Floral in Denmark. Ultimately, he said, he plans to return to the family business that nurtured his passion for horticulture.

"A big thing with my family, and with myself as well, has been getting a broad education and a full range of experiences," he said. "Temple has been an excellent starting point for me. Everyday I went to Ambler, it reminded me of home. I was very comfortable there. It will always be part of my life."

Rodney's endowed gift ensures that his impact on Temple University Ambler will last forever. To inquire about establishing named, endowed scholarships and awards, please contact Kathy Beveridge at 215-283-1306.



# Center for Sustainable Communities

## Sparking Research Initiatives; Leading by Example



CENTER for  
SUSTAINABLE  
COMMUNITIES

*The Center for Sustainable Communities was founded in July 2000 to build upon the rich tradition of environmental awareness and social responsibility at Temple University Ambler. Under the direction of Dr. Jeffrey*

*Featherstone, who came to Ambler with 20 years experience with the Delaware River Basin Commission, the Center has become an important, objective partner for government agencies, community organizations, and developers. The Center's mission is to offer educational programs, conduct interdisciplinary research, and serve as a primary regional resource to address issues of the environment and sustainability.*

*In 2001, the Center secured a \$1.5 million grant from the U.S. Department of Housing and Urban Development with the help of Congressman Joseph Hoefel. The grant has been an important stepping-stone in sparking research initiatives, public forums, and conferences.*

*Current initiatives at the Center for Sustainable Communities include a diverse range of challenges geared toward enhancing lives in our community. Below are brief summaries of some of these.*

### **PENNYPACK CREEK WATERSHED STUDY**

Over the past 30 years, the Pennypack Creek watershed in southeastern Pennsylvania has undergone tremendous urbanization. The creek has become infamous for excessive flooding that has resulted in lives lost and millions of dollars in damage.

In an effort to tackle several important issues related to the watershed, the Center has undertaken a 30-month study, funded in part by a \$330,000 grant from the William Penn Foundation.

The Center has opened a window on the Web to this important study at [www.csc.temple.edu/pennypack](http://www.csc.temple.edu/pennypack).

### **PHILABUNDANCE**

The Center has entered into a partnership with Philabundance, a non-profit, Philadelphia-based organization that collects and distributes donated food, to

optimize its hunger relief operation.

"We will be primarily involved in the mapping of hunger relief agency service areas and the neighborhoods that are more prone to instances of poverty," said Dr. Featherstone.

According to Bill Clark, Executive Director of Philabundance, the goal of the project is to "provide an effective hunger relief response consistent to the distribution of poverty and hunger in the Delaware Valley."

### **WIND IN OUR SAILS**

Every time the lights come on at Temple Ambler, the campus will be leading by example in the transition to cleaner, more energy-efficient forms of fuel. A portion of the campus' yearly energy needs will now be generated by wind power.

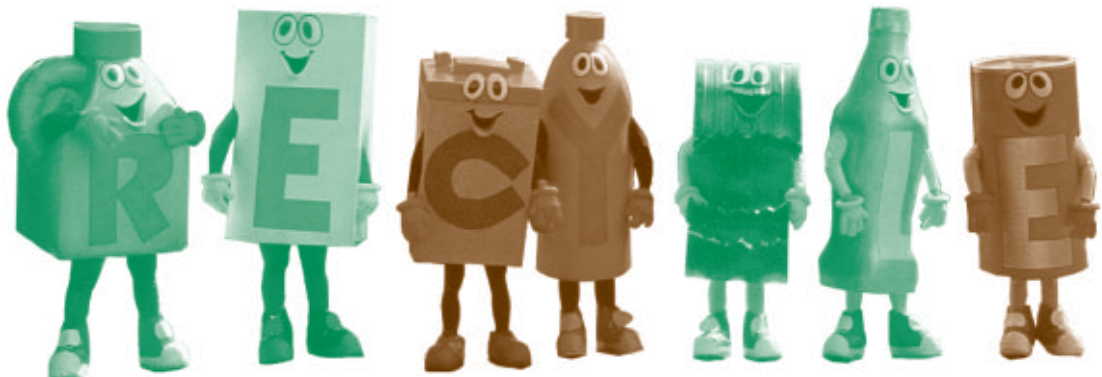
Temple University has purchased 200,000 kilowatt hours per year from wind energy provider Community Energy Inc. (CEI) for use at the Ambler campus. CEI generates wind power via gigantic turbines — some more than 220 feet tall — at wind farms in Somerset and Mill Run, Pennsylvania.

A smaller representation of the massive wind turbines has been erected on campus near Cottage Hall.

### **RUSH TO RECYCLE**

Competing against 19 other colleges and universities, Temple Ambler took top honors in the Department of Environmental Protection's Rush to Recycle Challenge. Ambler came in first place in the "Existing Recycling Programs" category by increasing the baseline level of recycling per student by an astounding 268 percent over an eight-week period.

*Members of the Ambler-based Phi Kappa Chi chapter of the Alpha Chi Rho fraternity dressed up as the "recyclables" to promote the Rush to Recycle Challenge issued by the Pennsylvania Department of Environmental Protection. Their enthusiasm got them invited to give a repeat performance at the Philadelphia Eagles game on November 10, 2002.*



*Temple alumna Susan Spinella 2001, a graduate student in the Community and Regional Planning Program and intern for the Center for Sustainable Communities, led the winning Rush to Recycle effort for Temple Ambler.*

"Rush to Recycle was a challenge to Pennsylvania universities to practice what they preach," said Dr. Featherstone. "The Center's primary responsibility is to promote sustainable development. I think this shows that the University wants to be a leader in that effort."

### **GROWING GREENER**

The Center has received a \$90,000 grant from the state's Growing Greener program to spearhead a project entitled "Pointing Pennsylvania Toward a Sustainable Future: A Proposal in Support of the Sustainable Pennsylvania Partnership." The researchers propose to develop a preliminary set of state sustainability indicators and measurement protocols, and a series of recommendations for moving Pennsylvania towards a more sustainable future.

The project will be undertaken by the Pennsylvania Consortium for Interdisciplinary Environmental Policy, a consortium of 43 colleges and universities, with Temple University — represented by the CSC — as the lead institution.

Recycle / Renew / Restore

# Temple University Ambler's "Graywater Gardens" Captures Honors at the Philadelphia Flower Show

Shades of gray came up gold for Temple University Ambler at the 2003 Philadelphia Flower Show.

Temple University Ambler Landscape Architecture and Horticulture students won Best of Show in the Academic Educational category at the 2003 Philadelphia Flower Show for their detailed representation of "Graywater Gardens." They also received the prestigious Bulkley Medal of the Garden Club of America, awarded to a special exhibit of exceptional educational merit in the field of conservation, which increases public awareness.

"For the students, this has been a very intense, rewarding process. With a very compressed time schedule and deadlines that had to be achieved, they met every challenge," said Temple University Ambler Assistant Professor Skip Graffam, one of the coordinators of the exhibit. "It was an excellent learning experience that will certainly help them in their careers. To win Best of Show, to earn this distinction at an internationally recognized exhibition, it's immensely gratifying for them."

Ambler's Graywater Gardens exhibit, shown at the Philadelphia Flower show from March 2 to March 9, detailed how water used for cleaning may be recycled and used for watering plants and gardens. With close to 300,000 visitors from all over the world at the week-long Pennsylvania Horticultural Society event, the concepts presented by the exhibit received tremendous exposure — something the students are hoping will catch on as those visitors return to their

respective communities.

Many people have never heard of graywater said junior Tim Sivers, a landscape architecture major from Scranton.

"It's something they might not otherwise know about," he said. "If a community takes to the idea, it can make a substantial difference, but they first have to have some exposure to the concept."

The display, which students worked on from initial design to completed exhibit, re-created an indoor and outdoor environment, with working washing machine, sink system, and shower system inside, and lush garden areas with walkways of porous paving outside.

"The core concept of the entire exhibit is water conservation with the primary example being a working graywater system. We wanted to show a wide range of options for graywater connections," Graffam said. "In some respects this is basically rediscovering an age-old system — before indoor plumbing all wash water typically went right into the garden."

The exterior design also incorporated other ideas for "water harvesting," including a modernized "rain barrel," which can capture up to 90 gallons of rainwater. Tad Radzinski, an adjunct instructor in the Community and Regional Planning program, donated the rain barrel through the company Sustainable Solutions.

While the landscape architecture students designed and built their walkthrough structure and graywater system, Horticulture students assisted Adjunct Instructor Sinclair

Adam in preparation of the lush display of plant material for the gardens.

"It was important for us to stress the use of native plantings that require low water and are drought-condition tolerant," Adam said. "An important point that we wanted to make is that you can still create a beautiful, lush design without requiring massive amounts of water."

From the exhibit's inception, "we wanted it to be an educational exhibit for the conservation, harvesting, and recycling of water," said Dr. Lolly Tai, Chair of the Department of Landscape Architecture and Horticulture.

"The Bulkley Medal is for conservation and we are so pleased to be recognized for that," she said. "It's a true tribute to the faculty and all the students who worked countless hours on the exhibit."

## ALUMNI AT THE FLOWER SHOW

The following is a very small sampling of the many Temple University Ambler alumni who took part in the Pennsylvania Horticultural Society's 2003 Philadelphia Flower Show.

**Betsy Branson '78:** After years of working on exhibits at the Show, this was the second year Betsy chaired the exhibit presented by the African Violet Society of Philadelphia. Following the 2003 Flower Show's theme, Festival de las Flores, the African Violet Society presented "La Hacienda Violeta," featuring dozens of varieties of violets. "We are presenting more members of the gesneriad family, of which the African violet is the most popular and most well known," she said. Betsy, a horticultural therapist, is also a member of the Garden Writers Association.

**Amy Borer '93:** Amy is someone that every exhibitor at the Flower Show is happy to have stop by — she chairs the committee on Cards and Ribbons. Amy enjoys following the judges around at the Flower Show and putting the ribbons on the winners. "It gives me a great perspective on the quality of the entries and what merits recognition," she said.

**Margaret P. "Peggy" Bowditch '78:** Peggy typically has approximately 90 individual exhibits at the show. Last year at the Flower Show, Peggy won six ribbons and a silver bowl. She does all of this without the benefit of a personal greenhouse, moving her prize-winning plants from windowsill to windowsill to catch maximum sunlight in the winter months leading up to the show. This year she entered a particularly beautiful New Zealand Clematis as well as some hearty bulbs, and rock garden plants.





# Ambler College Alumni Association Helps Students Achieve Dreams

Some might think of it as Temple University Ambler's best-kept secret.

To the members of the Temple University Ambler College Alumni Association (ACAA), the fact that there is an active, vibrant association, taking part in campus events and programs and helping new students achieve their dreams through scholarships, is no secret at all.

Since Temple University Ambler was designated the 17th college of the University, the Ambler College Alumni Association has taken some important steps. While there has been a campus alumni association for decades, this is the first time the association has been recognized as part of the University's General Alumni Association. It is also the first time that the campus' entire history has been recognized by the University. Graduates of the Pennsylvania School of Horticulture for Women (established at Ambler in 1910) and the former Landscape Design and Agriculture programs are considered alumni along with graduates of the current programs of the Departments of Landscape Architecture and Horticulture and Community and Regional Planning.

"We had more than 600 names of alumni

that we could contact previously. Now we have 1,400 names," said Claire Whiting, president of the ACAA. "One of the primary benefits of becoming part of the general alumni association is it allows us to access more of the resources of the University. We are able to take part in special Homecoming activities, participate in the Founder's Dinner, and apply for special project grants."

With its first special project grant from the General Alumni Association, the ACAA funded a luncheon to honor more than 20 School of Horticulture alumnae who had come to campus to help dedicate an historical marker presented to the campus by the Pennsylvania Historical and Museum Commission (see photo below). The School of Horticulture merged with Temple in 1961.

Another GAA grant enabled the ACAA to conduct a survey of Ambler College alumni last fall. The goal was to learn what alumni want from their association, to plan better programs on topics that fit their interests and offer them at times that fit their lives.

"This survey taught us about the ages of our alumni, their work, awards, interests, and even their special memories of their time at Ambler," said Kathy Beveridge,

Director of Development for Temple Ambler. (See Alumni Memories on page 9.) "Our most significant finding is the desire for an alumni newsletter like this one. Ninety percent of respondents said they were interested in receiving alumni news. *The Rambler* will provide regular communication twice a year. At the heart of *The Rambler* is the alumni news section that is called 'Pen & Trowel Inside.' This is where you can always turn for class notes and news of alumni events like June Homecoming."

For more information on the Temple University Ambler College Alumni Association, please call Kathy Beveridge at 215-283-1306 or call or e-mail Claire Whiting at 215-482-0722 or [ambleralumni@earthlink.net](mailto:ambleralumni@earthlink.net).

**Thanks to all who returned their Ambler College Alumni Surveys. The following three winners will receive \$50 each.**

**Ms. Mary Jane Evans '59 of Litchfield, CT**

**Mrs. Elizabeth Hassler '57 of Reading, PA**

**Mr. Joseph R. Janulewicz '74 of Philadelphia, PA**

## The rich history of the Pennsylvania School of Horticulture for Women and Temple University Ambler will now be celebrated every time someone passes the campus on Meetinghouse Road.



*Pictured from left to right: Congressman Joseph Hoeffel, Chair of the Pennsylvania Historical and Museum Commission Janet Klein, Ambler College Dean Dr. Sophia Wisniewska, PA School of Horticulture for Women alumna Lillian Lubin Krelove '40, Temple University Provost Ira Schwartz, and Associate Professor of Landscape Architecture and Horticulture Valencia Libby.*

**An historical marker unveiled in September 2002 commemorating the Pennsylvania School of Horticulture for Women, founded in 1910 on the grounds of what is now Temple University Ambler, is located on the well-traveled road.**

**September's dedication, a who's who of Temple University Ambler's past and present — gave more than 150 people their first glimpse of the marker, presented to the University by the Pennsylvania Historical and Museum Commission.**

### AMBLER COLLEGE ALUMNI ASSOCIATION OFFICERS

**Claire Weir Whiting '66**  
President, Membership Secretary

**Theresa Meehan '90**  
Vice President

**Elizabeth Kosty Smith '48**  
Recording Secretary

**Mary Anne Fry '58**  
Treasurer

**Ronald McKnight '70**  
Past President

**Merrill Miller '72**  
Presidential Appointee



# Temple Ambler Alumnae Honored at Founder's Dinner

As a nationally recognized horticulturist, Stephanie Cohen is a household name among gardeners in the know. Her designs are often found in books, magazines, and catalogs.

As the founder and director of the Peace Valley Nature Center in Bucks County, Caroline Corey Jarin has been helping to instill a love of nature in children and adults since 1975.

Both have been recognized by the General Alumni Association as prime examples of distinguished Temple University Ambler alumni.

In 2002, Cohen became the first Ambler alumna to be presented with a Certificate of Honor Award from the Ambler College Alumni Association at the Temple University Founder's Dinner, held as an annual tribute to University founder, Russell H. Conwell.

For Jarin, who became the second Honor Award recipient in April 2003, it came as a literal shock. As an alumna of the Pennsylvania School of Horticulture for Women, founded at the Ambler site in 1910, she never expected to be honored as a Temple alumna.

### HUMBLE BEGINNINGS FOR THE ARBORETUM DIRECTOR

Stephanie Cohen – the 2002 Honor Award recipient – may be a very well-known figure today, but that wasn't always the case.

"In the 1970's when I came back to Temple, I had three children and 200 plants in the house and nowhere to put them," said Cohen, who

received a degree in Liberal Arts from Temple in 1959. "We got this big, brand-new TV and I decided to put the plants on top of it. I burned out the TV from watering the plants – twice."

It was then that Cohen's husband, Dr. Richard

Cohen, made the wise suggestion that a "moratorium" be placed on plant buying while his wife returned to school to study the greenery she loved so much. After receiving a degree in Horticulture in 1980 at Ambler, she was asked to teach a course "on a short-term basis." More than 20 years later, that "short-term basis" is still going strong. Cohen, who is the Director of the Landscape Arboretum of Temple University Ambler, gives over 100 talks throughout the year and has received numerous honors during her career.

"I believe being asked to teach here was really serendipity. I've put my heart and soul into this place," Cohen said. "This honor, it was like winning an Academy Awards for me. All of the hard work was being recognized, and that is wonderful."

### IT ALL STARTED WITH A DOG KENNEL

On May 1, 1975, Carolyn Corey Jarin – the 2003 Honor Award recipient – walked into a dilapidated old dog kennel on the grounds of Peace Valley Park with a dream.

She believed the building was an ideal place to create a nature center and convinced the Bucks County Parks and Recreation Board she was right.

Jarin also walked into that old building with the skills to turn her dreams into reality. She was a 1946 graduate of the



*Carolyn Corey Jarin '46 at her Peace Valley Nature Center where their motto is "Who learns will love and not destroy the creatures' life, the flowers' joy."*

Pennsylvania School of Horticulture for Women, the institution that would later become Temple University Ambler.

"I kind of look at it, and all of the success I've had with the nature center, as 'right time and right place.' I was very lucky to be able to start this nature center because I had the horticulture and landscaping background needed to do it," she said.

Today, the Peace Valley Nature Center, just a few miles from Doylestown, offers 14 miles of nature trails – all designed by Jarin – through woods and meadows, and provides educational programs to 13,000 children each year in groups that average no more than 10 students each. The nature center is home to a number of animals species, as well as Jarin herself, and more than 250 species of birds have been sighted there.

Carolyn is "an excellent representative for what our alumni have been able to achieve," said Claire Whiting. "She has nearly single-handedly created and maintained the Peace Valley Nature Center – an astounding accomplishment."

*From left to right: Claire Weir Whiting '66, Ambler College Alumni President, Stephanie Cohen '80 and Dean Dr. Sophia Wisniewska at the 2002 Founder's Dinner.*



**NOW ON YOUR DESKTOP!**

The Temple University Online Alumni Community features an interactive alumni directory, e-mail forwarding, class notes and more!

Join now at [www.alumni.temple.edu](http://www.alumni.temple.edu)

Pen & Pencil Inside Trowel



*The following are memories of Ambler College alumni shared on the recently completed alumni survey. In the future, this section will include notes and memories of all alumni with ties to the Ambler campus. Please send us yours.*

**Lillian Lubin Krelove '41** The horticulture students took turns before a test to gather sprigs of plants we had to recognize. We lined them up in the hallway of the old dorm (that burned down) along the floor with numbers and all horts came through and named the sprigs. Before bedtime, the answers were supplied and we all checked our answers. Hopefully, we got them right in the next day's test.

**Ruth Y. Schmitz '41** Our field trip with Dr. Ruth Patrick to New Jersey Pine Barrens; field trips to visit Main Line estates to view landscaping with James Bush-Brown; and life-time friendships with Michi Yamaguchi and Penelope Smith.

**Clara Foss Maier '43** Prof. Ruth Patrick's classes and our class party at her home; Mr. Andrews' bee class where we spent time one day separating the queen from a swarm on somebody's property. We missed lunch and he bought a quart of ice cream. I have many fond memories of the S. of H. Miss Barber, the "house-mother," Mr. & Mrs. Bush-Brown, and the office help. My horticulture teacher, Mr. Boicourt, was an excellent teacher also. I had many close friends but have lost touch with many. Franny Brown and Jane Mills were my roommates during different years. I still hear from Jane but do not know where Fran is.

**Nancy L. Wheaton '45** I will never forget Mr. Andrews coming into the greenhouse as we were

throwing the potted cantaloupe seedlings, bucket brigade fashion, to take them outside. That was the first and only time he ever raised his voice. He was not very happy with our procedure. May Day - hanging baskets on all the doors. Christmas concerts and the banquets. Touring beautiful gardens of Philadelphia estates with Mr. Bush-Brown. Mr. Baicourte's pipe and his sense of humor. Miss Heick getting upset with us when we put the dead mouse on the hall chandelier. The School of Horticulture holds very fond memories for me.

**Alice Boulden Smith '48** Planting our assigned patches in the perennial border. Landscape design with Mr. Bush-Brown and trips to local estate gardens. White-washing greenhouse glass. Pruning fruit trees in February cold. Chapel with Mrs. Bush-Brown and Miss Heick. Memorizing potato and apple varieties in time to forget them for the exam. Two extremely happy years of learning and forming life long friendships.

**Elizabeth Kosty Smith '48** I remember fondly the lovely evenings after dinner in the large lounge with the fireplace burning and the students chatting about their day's activities.

**Elizabeth Roosevelt '50** I remember all my two years at Ambler as a wonderful time. Pruning the apple trees, learning to drive the tractors and some of the mistakes while doing that, and many friendships.

**Sara M. Keith '54** Gourmet meals, all grown at school. Working in the formal gardens and running experimental tests in greenhouses on organic vs. inorganic methods.

**C. Terry Arnholt '60** Having to ride horses in seven degree weather; cotoneaster horizontalis along the walk; the hardy orange tree by the back door; Mr. Zutter's fruit and vegetable class; cookies and milk break; the beautiful stairway!

**Antoinette Marie Tosco '64** Utmost on my mind is how my personal experiences and studies at the Ambler campus have enhanced my life and my working career throughout the years.

**Lois H. Montaigne '75** I remember Viola Anders teaching floriculture and cannot look at a garden bed without thinking of her advice: "edge the bed - clean, clear edges define the garden." I remember, happily, rooming with Holly Harmar and Lisa Freeman who have both gone on to have distinguished careers in horticulture in very different arenas. Temple Ambler provided me with an excellent education and fond memories.

## ALUMNI NEWS UPDATE

All Alumni with ties to Ambler are invited to share their news. Send via fax (215-283-1626), e-mail (kathy.beveridge@temple.edu) or mail to Kathy Beveridge, 580 Meetinghouse Rd.; Ambler, PA 19002. We welcome photo contributions.

NAME \_\_\_\_\_  
FIRST MIDDLE LAST

ADDRESS \_\_\_\_\_

CITY/STATE/ZIP \_\_\_\_\_

YEAR OF GRADUATION \_\_\_\_\_

HOME PHONE \_\_\_\_\_ WORK PHONE \_\_\_\_\_

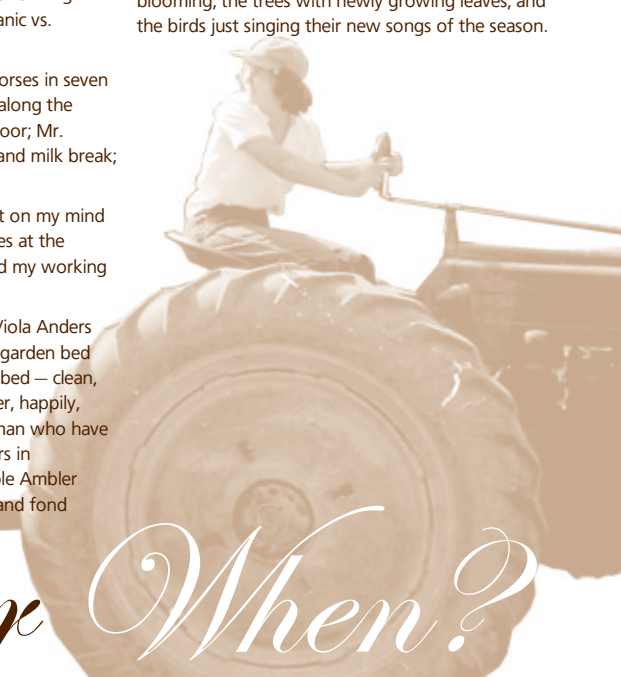
E-MAIL \_\_\_\_\_

WHAT'S NEW \_\_\_\_\_

**Elizabeth D. Branson '78** I was the only person who could drive a stick shift in my summer vegetable practicum class. Thus, I, as the "old" student of 37, got to drive the tractor with students on a contraction behind, planting potatoes. Unfortunately, I didn't drive straight and wiped out a few newly grafted apple trees!

**Elaine H. White '86** Plant identification classes in all kinds of weather. Tramping all over the campus and surrounding neighborhoods to study specimen tree shrubs and woody plants. Twelve to fifteen each week with Rick Ray. The pace never let up. And then exams of 50 bare branches and twigs to identify.

**Anoush A. Berberian '93** The campus was a great place to learn about plants, especially having an outdoor classroom that changed during each season. In the spring time, I would make sure that I always took a few extra minutes to cut through the woodland gardens to get to class. The spring bulbs were blooming, the trees with newly growing leaves, and the birds just singing their new songs of the season.



# Remember When?



# Alumni Come Home to Ambler in June

It is a summer tradition. All Ambler College Alumni and their families are invited to participate in the June Homecoming celebration organized by the Ambler College Alumni Association on Sunday, June 8th. Special guests will be members of the reunion classes of 1938, 1943, 1948, 1953, 1958, 1963, 1968, 1973, 1978, 1983, 1988, 1993, and 1998.

The event will begin at 1:00 p.m. with a buffet luncheon and lecture in Bright Hall Lounge. Speaker Mark Focht, ASLA, Director of the Natural Lands Restoration & Environmental Education Program (NLREEP) and an adjunct professor in the Department of Landscape Architecture and Horticulture, will address the topic of "Urban Ecosystem Restoration: What is it and how is it done?"

Following these events, come over to the

new greenhouse for the fabulous annual Plant Auction. Enjoy bidding in a live auction and take home some great plants for your gardens. Donations of plants and other horticultural items are appreciated.

If you would like to attend, please send your name, with class year, and the names of your guests, along with payment of \$12 per person, to Claire Whiting, 379 Parker Avenue, Philadelphia, PA 19128-4422. Checks must be payable to Temple University with the notation "Alumni Homecoming" on the face of the check. The



*Bidders flock to the annual Plant Auction at June Homecoming.*

RSVP deadline is May 26th. Please note, there will be no phone reservations and no tickets will be sold on the day of the event. If you have questions, please call or e-mail Claire Whiting at 215-482-0722 or [ambleralumni@earthlink.net](mailto:ambleralumni@earthlink.net).

## Ambler Alumni Honored In the Gallery of Success

On the first floor of Mitten Hall at Temple's Main Campus, the success of Temple Ambler alumni is pretty hard to miss – it's right there on the wall for everyone to see. This year, **Ernesta Ballard '54**, a prominent figure with the Pennsylvania Horticultural Society, and **Christopher Palmer '01**, a mainstay with the Fairmount Park Commission, were inducted into Temple University's Gallery of Success.

Sponsored by Career Development Services and the Division of Student Affairs, the Gallery began in 1998 with the intention of highlighting successful alumni/ae for the entire Temple community to honor. Alumni/ae are honored with a photograph and a brief biographical sketch, which are prominently displayed in the Gallery of Mitten Hall for one year. In addition, there is a permanent display in the Career Development Services Center recognizing the legacy they left for current and future Temple students.

### CALLING AMBLER CAMPUS RESIDENTS 1979 TO 1984

This fall, alumni who lived on the Ambler campus anytime from 1979 through 1984 will gather for a reunion. "I remember a lot of good times with those people," said Judith Dinan Evans '84 who is organizing the reunion. "I'd like to bring as many of them as possible together again."

Details of the date, location, and cost have not yet been determined. However, Evans envisions an all-inclusive, off campus event for couples, including dancing to music from the seventies and eighties.

Your assistance is needed to make it great. Please contact Judy Dinan Evans at [jacian@ptd.net](mailto:jacian@ptd.net) to get involved.

## Alumni Scholarship Benefits Students

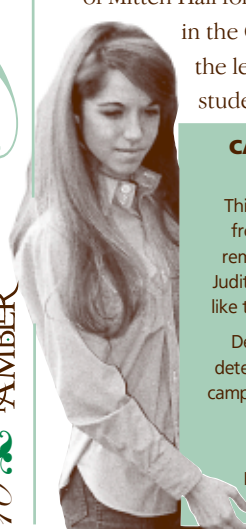
The Ambler College Alumni Association (ACAA) offers scholarships and awards to benefit Ambler College students. The Bush-Brown Alumni Scholarship was initially established in 1969 in honor of Louise Carter Bush-Brown, a student at the Pennsylvania School of Horticulture for Women from 1914 to 1916 and director of the school from 1924 to 1952. The scholarship is offered to full-time Department of Landscape Architecture and Horticulture applicants.

The Viola K. Anders Merit Award, formerly the Viola K. Anders Garden Design Award, was established in honor of Viola Anders, "beloved teacher of herbaceous plant materials and overseer of the Formal Perennial Gardens and the Annual Garden." The student recipient is selected by staff and instructors based on "dedication and services to the horticultural programs – gardens, greenhouse, and arboretum."

"To date, \$35,150 has been given to students and graduates to further their education in the Horticulture and Landscape Architecture fields," said Claire Weir Whiting '66, President of the ACAA.

To support either of these funds, make your check payable to Temple University (noting the fund you are supporting) and send it in the envelope enclosed with this publication.

*The Ambler College Alumni Association offers scholarships to further students' and graduates' education in the Horticulture and Landscape Architecture fields.*



# Landscape Arboretum

## Planning Process In Motion

In October, significant steps were taken to advance the mission of the Landscape Arboretum of Temple University Ambler. Ideas, plans, compliments, and critiques were all part of a meaningful day of focus group sessions designed to secure valuable input from a variety of Arboretum stakeholders.

Morning session participants included alumni, green industry leaders, government officials, and community leaders. The afternoon session was an internal session that included Temple faculty, students, staff, and administrators.

Dr. John Kelly, Director of the South Carolina Botanical Garden and Clemson University Vice President for Public Service and Agriculture, served as facilitator for both sessions.

"The level of expertise and creativity in the room was very impressive," said Dean Dr. Sophia Wisniewska. "Just sitting back and listening to the ideas and potential for the Arboretum looking into the future was exciting."

Dr. Kelly completed a Summary Report of the Arboretum Initiative that was submitted to Dean Wisniewska.

Dr. Kelly specifically noted the historical role of the campus as the Pennsylvania School of Horticulture for Women as a niche that could be developed into an item of international interest, featuring alumnae and the role of women in the development of the fields of horticulture and landscape architecture.

Another niche identified by Dr. Kelly was the area of "Green Architecture" and environmental education.

"By building landscape concepts that solve societal problems, the arboretum has the opportunity to teach the world about new ways of conserving natural resources while still having distinguished building and landscape design," wrote Dr. Kelly in his report.

After receiving and reviewing Dr. Kelly's report, Dean Wisniewska made the following decisions that will set the course for the future of the Landscape Arboretum:

- The campus perimeter is the official boundary of the Landscape Arboretum.
- The current strategic planning process for the campus and college will be adjusted to include the goals associated with planning for the future of the Arboretum.

- An advisory committee will be established to assist with planning, community engagement, and fundraising for the Arboretum.

- The advisory committee will be charged with drafting mission and vision statements; identifying funding sources; creating a job description for the hiring of an Arboretum Director (Acting Director Stephanie Cohen has served in a volunteer capacity for the past two years); and initiating a master plan to integrate with the campus master plan.

"Dr. Kelly's report gives us the foundation to begin establishing a structure, vision, and plan for the future of the Arboretum," said Dr. Wisniewska.

**For more information or to take a walking tour of the Landscape Arboretum, call 215-283-1292 or e-mail [la.hort@temple.edu](mailto:la.hort@temple.edu).**

In Bloom

## In BLOOM

By Rudy Keller, Staff Horticulturist, Landscape Arboretum of Temple University Ambler

With its nine premier gardens – highlighting everything from perennials to woodlands to wetlands to native plants and herbs – the Landscape Arboretum of Temple University Ambler provides a wide variety of educational experiences for visitors.

Late winter through spring is the most colorful time in the Woodland Garden, where large, decades-old colonies of spring bulbs bloom in succession from February through May.

Earliest to bloom are the nodding white flowers of snowdrops (*Galanthus* species) and the bright yellow disks of winter aconite (*Eranthis hyemalis*), both of which start blooming in early February in warm winters. This year, their buds were still tightly folded under crusted snow in mid-February, and they may not bloom until March.

A series of warm days in late March will bring out the small, yellow-green, honey-scented flowers of the native spicebush (*Lindera benzoin*) at one end of the woods while the larger look-alike flowers of the Cornelian cherry (*Cornus mas*) pop into bloom behind the fountain. Purple to white flowers of Lenten rose (*Helleborus orientalis* hybrids) should be blooming in the Groundcover Garden.

The most colorful display comes in April, when pools of sky blue glory-of-the-snow (*Chionodoxa luciliae*) and deep blue Siberian squill (*Scilla siberica*) appear along the woodland paths. A walk through the Woodland Garden anytime in April will yield many pleasures, from large notice-me daffodils to small, subtle trout lilies (*Erythronium* species) easily missed nodding among their mottled leaves at the

feet of tall oaks. Many native spring ephemeral wildflowers are at their best in April, including pink striped spring beauty (*Claytonia virginica*), bloodroot (*Sanguinaria canadensis*), and violets (*Viola* species).

The last large bulb display in the Woodland Garden comes in early May, when hundreds of blue, pink, and white woods hyacinths (*Endymion hispanicus*) come into bloom. The lavender, grapelike clusters of *Wisteria sinensis* growing on the fountain pergola usually bloom at the same time. A spectacular specimen of the native flame azalea (*Rhododendron calendulaceum*) provides the finale. When the last of its gold-orange flowers have fallen in late May, the Woodland Garden goes cool and green for the summer.

# Sustainable Wetland Garden Honored

There is a place of tranquility on the Temple University Ambler campus where small groups of students and faculty often gather during the warmer months to study, plan classwork, or simply take a moment to “get away” from their busy day.

The Sustainable Wetland Garden, located near Widener Hall and Cottage Hall, is a working demonstration of sustainable principles and management.

The wetland garden, the most recent addition to the Landscape Arboretum of Temple University Ambler, has been honored by the Pennsylvania-Delaware Chapter of the American Society of Landscape Architects (ASLA). It was presented with the ASLA Honor Award “for outstanding professional design in the Landscape Architecture/Design Built Category” and the prestigious “People’s

Choice” Award for 2002.

The project was selected from 25 submissions from landscape architecture firms throughout Pennsylvania and Delaware. The Virginia chapter of the ASLA juried the awards program.

Significant portions of what is now the Sustainable Wetland Garden began as part of Temple University’s 1997 entry in the Philadelphia Flower Show. “The Green Machine,” an exhibit detailing how created wetlands could be used for cleaning wastewater, won Best of Show for that year in the Academic Educational category.

After the 1997 Flower Show, students in the Design/Build Studio in the Landscape Architecture curriculum spent the following



*Landscape Arboretum focus group participants bear from Homer Elliott, staff horticulturist, on the workings of the Sustainable Wetland Garden in October, 2002.*

two years – spring 1998 and 1999 – retrofitting the exhibit for the sustainable wetland garden. This would not have been possible without the generous support of Temple alumnus Peter G. Schlotterer ‘49 who wanted to expose visitors to the concept of sustainable wetlands.

The solar pergola from the 1997 exhibit, a wooden structure that supports the solar photo-voltaic panels, creates a garden room with a sense of enclosure. The exposed cullet (recycled glass) paving from “The Green Machine” has also made the transition to the wetland garden.

The solar panels utilize the sun’s renewable energy to power a pump that circulates the water in the central fountain to a created aerial aqueduct.

The garden is entirely made of native species and comprises several diverse habitats. The wetland portion functions as a bio-filter – the vegetation and microorganisms filter out pollution that is generated from the surrounding buildings. It is a beautiful model of how the landscape can mitigate the detrimental impacts of the built environment.

To get a detailed, first-hand experience of how the garden functions, the newly offered “Environmentally Friendly Gardens” Tour of the Landscape Arboretum includes a walk through the Sustainable Wetland Garden.

“For all of the students that worked on it as a Flower Show exhibit and as the existing garden, it creates a legacy,” said Landscape Architecture and Horticulture Department Chair Dr. Lolly Tai. “It is a connection for our alumni to the campus and the University. To come back and see their work appreciated by current students, it is a great inspiration.”

## The World’s Largest Garden Party

Take a tour of Japanese gardens, enjoy birding and beautiful butterflies, learn about beneficial bugs, or take an almost infinite variety of plants home with you. All of this can be accomplished without ever leaving the Greater Philadelphia area.

Greater Philadelphia Gardens (formerly Gardens Collaborative) of which the Landscape Arboretum of Temple University Ambler is a member, invites everyone to the “World’s Largest Garden Party,” a collection of events and programs in April and May at public gardens and arboreta throughout the region.

The World’s Largest Garden Party will feature Ambler’s first-time, outdoor educational Earth Day celebration – EarthFest 2003, and the Landscape Arboretum’s “Environmentally Friendly Gardens” tour, in addition to events at more than 20 other locations.

Learn about naturalistic gardening at the Lewis W. Barton Arboretum at Medford Leas, enjoy a tea ceremony at Shofuso, the Japanese House and Garden at Fairmount Park, celebrate May Day in the Gardens at Morris Arboretum, or take part in the Festival of the Fountains at Longwood Gardens. There will also be a wide variety of plant sales at Temple University Ambler (part of EarthFest on April 22), Jenkins Arboretum, Bowman’s Hill Wildflower

Preserve, the Brandywine Conservancy, and the Morris Arboretum.

Greater Philadelphia Gardens is a group of public gardens, arboreta, and historic houses with gardens in the Philadelphia region that formed in 1989 to work together to promote the gardens and encourage visitors. Collectively the institutions attract more than two million visitors each year. The organization has become a model for other public gardens, arboreta, and historic houses all over the country.

For more information about the World’s Largest Garden Party and Greater Philadelphia Gardens, call 215-247-5777, ext. 175, or visit [worldslargestgardenparty.org](http://worldslargestgardenparty.org).



# The Face of New Leadership for Landscape Architecture and Horticulture

Dr. Lolly Tai knows the business of landscape architecture and horticulture. With 23 years as a landscape architect and 14 years teaching, she also knows how to pass on her wealth of experience to the next generation of professionals.

In July, Dr. Tai will celebrate her one-year anniversary as Chair of Ambler's Department of Landscape Architecture and Horticulture.

"I have found the Ambler campus to be a friendly, vibrant, evolving, and growing place. I feel it is certainly an exciting time to be here," she said. "I want to build on our tradition of hands-on learning that dates all the way back to 1910 with the establishment of the Pennsylvania School of Horticulture for Women."

Dr. Tai's combination of practical and academic experience "is a tremendous asset for Ambler as we continue to build upon our established programs and traditions," said Temple University Ambler Dean Dr. Sophia Wisniewska.

"Dr. Tai is an outstanding teacher, a very impressive scholar, and a national leader in her field. I am delighted that someone with Dr. Tai's experience and standing in the field has joined Ambler College," she said. "The faculty were looking for a strong leader to build a team and move the department to the next level."

Dr. Tai, formerly a professor in the Department of Planning and Landscape Architecture at Clemson University, said she will be reviewing the curriculum in Landscape Architecture and Horticulture with the faculty "to ensure our students receive substantial information on environmental sustainability and its practical applications."

"The revised curriculum that is being developed is about 99.9 percent complete. We wanted to open up more opportunities for our students," she said. "We have been able to create two new free electives in the program. The faculty, and myself, are striving for excellence as we meet our accreditation standards."

The Landscape Architecture program will undertake the re-accreditation process in spring 2004. The American Society of Landscape Architects is the coordinating body.

"Accreditation is extremely important. It shows that we meet the essential standards," Dr. Tai said. "It gives the program a lot of credibility; that we are doing the right thing."

Dr. Tai and Dr. Elizabeth Sluzis are also spearheading a comprehensive review of the horticulture program curriculum to ensure that it keeps up with changing times and the demands of the market. Over the next few months, a team of experts from industry, academia, and the alumni community will be invited to participate in this process.

Dr. Tai is also seeking to establish an important tie with her Scottish alma mater by establishing a study abroad program with Heriot-Watt University/Edinburgh College of Art. Dr. Tai received a Ph.D. in Landscape Architecture from Heriot-Watt after completing a Bachelor of Science degree at Cornell University, and an MLA from Harvard University.

"We have been in discussions about establishing the study abroad program with Felicity Steers, coordinator of exchange programs at Heriot-Watt," Dr. Tai said. "We are also looking into the possibility of creating an internship with the Royal Botanical Gardens in Edinburgh."

In addition to these efforts to improve the educational experiences of students, faculty in Landscape Architecture and Horticulture are involved in a variety of research, scholarly, and public service endeavors (See Research Roundup, page 4), according to Dr. Tai.

"Our faculty have a range of diverse interests, many of which intersect with an interest in environmental sustainability," she said. "I will

be encouraging them to develop these interests into research and/or creative projects, scholarly papers, and collaborative initiatives with research fellows from the Center for Sustainable Communities and faculty from across the University, including our new Community and Regional Planning Department.

"Landscape Architecture and Horticulture faculty and staff will also continue to help develop the Landscape Arboretum of Temple University Ambler," Dr. Tai added.

"We want this arboretum to become an excellent educational resource for students as well as for our community and our region," she said.

While at Clemson, Dr. Tai taught a wide variety of courses, from landscape architecture design and theory to site engineering to computer aided design (CAD). Since 1989, she maintained a private landscape architecture firm in Greenville, South Carolina. Her projects have included everything from resorts to botanical gardens to private residences.

Dr. Tai has received numerous professional and academic honors and awards, including Merit and Honor awards from the American Society of Landscape Architects and Faculty Excellence and Scholarly Achievement awards at Clemson University. In addition to authoring *Creating Sustainable Landscapes for Habitat for Humanity Homes*, Dr. Tai has contributed to dozens

of books, journals, and other publications, in addition to refereed and invited presentations.

## Dr. Lolly Tai



Branching Out

## Community and Regional Planning Enjoys A Successful Beginning

In Fall 2002, Temple University Ambler began offering a new degree program to meet needs expressed by planning firms and government officials throughout the state – Community and Regional Planning (CRP).

Students learn about the necessity for good planning and all the strategies that can make planning successful - the role of local and state politics, how local ordinances work, site planning, transportation, regional cooperation, conflict management, along with learning about Geographic Information Systems (GIS) software.

“For the Master’s program, we have close to 30 matriculated students and 20 non-matriculated,” said Dr. Jeff Featherstone, Chair of the CRP program. “The non-matriculated students are basically taking an initial look at the program to see if it’s for them. What we are finding is that most like the field when they get into it and decide to matriculate.”

According to Dr. Featherstone, the graduate degree students come from all walks of life, from individuals presently in the planning field that are seeking additional credentials, to people who are “mid-career” and interested in a change.

“We have four or five retirees that have decided to try a new career for themselves,” he said. “In general, our graduate students are well above average in terms of grade point average and GRE scores. We have some first-rate students and first-rate instructors.”

Students in the program are placed on the front lines in the struggle to ensure sustainable communities for the future. While developing the structure of the program, the need for new planners became clearly evident.

“There are vacancies everywhere for planners. Public agencies like county planning commissions want to find good, knowledgeable people,” said Dr. Featherstone. “Private consulting firms are also running into the same difficulties.”

On the undergraduate side, recruitment of students has been more challenging.

“The undergraduate program has been slower to build,” Dr. Featherstone said. “Beginning in the fall (2003), we will be offering a wide range of new courses for undergraduates, including a freshman course – People and Places – that will get students up to speed with just what planning is all about.”

The goal, Dr. Featherstone said, is to add 20 undergraduates to the program per year.

“At the graduate level, we are confident we’ll attract 20 students each year,” he said. “Township managers, individuals from non-profit organizations; they really are an extremely diverse group.”

Approaching its one-year anniversary, CRP is certainly not a program that is standing still.

“One of the next steps for us is to seek accreditation with the Association of Collegiate Schools of Planning, of which we are a member. In order to achieve that, we must graduate at least 25 students,” Dr. Featherstone said. “This is an exciting time for the program. We have adults who want to start a new career or further their current career goals and we also have young people who are part of a generation that is deeply interested in social change. A degree in Community and Regional Planning allows them to preserve and create the world in which they want to live and work.”

### TEMPLE OWLS TO COMPETE ON AMBLER CAMPUS Athletic Fields Under Construction

**Temple University has made a \$4.5 million investment in the Ambler campus that will significantly add to campus life and attract the local community.**

**In January, Upper Dublin Township gave final approval to Temple University’s plans to construct NCAA-standard soccer, baseball, and softball fields at the Ambler campus.**

**Construction is already underway on the project, which is slated to be completed in April.**

**The campus will now serve as the full-time home for the Temple University men’s soccer, women’s soccer, baseball, and softball teams. All four NCAA Division I teams are members of the Atlantic 10 conference.**

**“We are very pleased to provide our student-athletes with a first-class facility at the Ambler campus,” said Temple Director of Athletics Bill Bradshaw. “Our coaches are very excited to bring their teams to Montgomery County to expose the suburban audience to NCAA Division I athletics.”**

**The fields will be located on the tract of land bounded by Meetinghouse Road, Woods Drive, Butler Pike, and the Ambler campus commuter parking lot. All practices and games will take place during the day.**

**“This is a major development for the campus,” said Temple University Ambler Dean Dr. Sophia Wisniewska. “The facilities are going to be top-notch and the student-athletes will add a great deal to our campus community. This will give our students and local residents a chance to view collegiate athletics at the highest level.” Look for more information in the next issue of *The Rambler*.**



# EarthFest & Sustainability Conference

## Celebrate Earth Day

Whether you are a landscape architecture graduate, a proud alum of the business school, or proud product of the arts faculty, a new Earth Day event at Temple University Ambler will offer something to suit all interests.

EarthFest 2003, a first-time outdoor, educational event held in celebration of Earth Day, will promote environmental awareness using sustainable concepts, methods, and practices to protect and preserve our natural environment. Hosted by the Center for Sustainable Communities, the outdoor festival, with a theme of "Sustaining Our Communities," will be held on Earth Day, Tuesday, April 22, 2003, from 10 a.m. to 6 p.m., rain or shine. The event will welcome alumni, middle, high school, and college students, faculty, staff, public officials, businesses, planners, environmental organizations, and the general public to campus for a full day of activities.

The Department of Landscape Architecture and Horticulture will present a special "Gardener's Market" at the campus greenhouse — a plant sale offering primarily native plants and shrubs. A "museum" of horticulture and landscape architecture memorabilia will also be featured.

Landscape Architecture students will share and explain designs that have an environmental influence, including ideas for an environmentally friendly landscape for the new Ambler Learning Center. Students from Temple's Tyler School of Art will also hold a juried competition of environmentally friendly artwork. Temple Environmental Studies students will offer an interactive quiz.

Interactive displays at EarthFest will include a working "graywater" filtration system — a key component to Temple's 2003 exhibit at the Philadelphia Flower Show. The Community and Regional Planning Department along with students from Wissahickon Middle School, will demonstrate the use of GIS (Geographic Information Systems), an important part of what students in the undergraduate and graduate programs have been learning in the classroom.

In addition to providing a showcase for Temple students, Temple University Ambler has also sought out student, non-profit, and for-profit organizations to come to EarthFest to demonstrate or exhibit sustainable concepts related to our living environment.

The Pennsylvania Horticultural Society will present its Gold Medal Plant Exhibit recognizing woody plants of outstanding merit. PHS members will also be on hand to provide information about its highly successful Philadelphia Green project, a continually expanding urban greening program started in 1974.

The Academy of Natural Sciences will present its Enviroscapes Watershed Model which focuses on how human activities on land affect our streams, rivers, and wetlands. Weather permitting, an Academy exhibit, featuring live animals from aquatic habitats, will also be presented.

"There are many businesses and organizations involved in new and innovative technologies to help sustain our communities and the environment," said Dr. Jeffrey Featherstone, Director of the Center for Sustainable Communities and chair of the Department of Community and Regional Planning. "This celebration provides us the opportunity to show the public the latest technology to promote sustainability. If you have an idea with the potential to positively impact the community, sharing it can only help it catch on." From a quick ride on fully electric vehicles to the latest photovoltaic, or solar-powered, energy systems, there will be interactive demonstrations and events that are sure to capture anyone's interest.

CN8 News meteorologist Robyn Stevens, who also hosts CN8's weekly "Garden Report" and is a member of the Clean Rivers organization, will emcee the event.

Sponsors of the inaugural event include Commerce Bank, the Delaware Valley Regional Planning Commission, and Johnson Controls.

"As a campus, we are a leading academic institution in terms of

recycling. We have purchased wind power, and we are exploring the possibility utilizing electric cars on campus," said Dr. Featherstone. "We want to provide younger students and the public the opportunity to visit a campus that practices what it preaches. As a university we want to take a lead role in offering people ways to learn about, discuss, and deal with issues of sustainability."

During EarthFest, the Center for Sustainable Communities and the Temple University Intellectual Heritage Program will also sponsor a day-long conference entitled "The Ecological, Economic, Cultural, and Intellectual Implications of

Sustainability."

"Sustainable development is a general term for an evolving process that focuses on maintaining or enhancing economic opportunity and community well being, while protecting and preserving the natural environment upon which people and economics depend," Dr. Featherstone said. "Fundamental to the concept is the insight that problems facing society have multiple dimensions, including environmental, economic, and social aspects as well as institutional challenges."

The conference will tackle a variety of topics including: "When and how do private and public interests collide?" "Does preservation and conservation mean a rejection of 'Progress?'" "How might science and social values meet?" and "Indicators of sustainability: How can state, county, and local governments assess progress?"

There is still time for alumni to become part of what we hope will become a centerpiece event for the campus for years to come. For more information about EarthFest 2003 visit [www.ambler.temple.edu](http://www.ambler.temple.edu), call 215-283-1291, or send e-mail to [earthfest@temple.edu](mailto:earthfest@temple.edu).



*For more information on the sustainability conference, call 215-283-1307.*

EarthFest

## Calendar of Events

### **EARTHFEST 2003 • APRIL 22, 2003 • 10 A.M. TO 6 P.M.**

EarthFest 2003 is a first-time outdoor educational festival to be held in celebration of Earth Day (see page 15). Admission is free. The Center for Sustainable Communities at Temple Ambler is proud to host this event for the general public and students of all levels. This outdoor event will be held rain or shine. For more information regarding EarthFest 2003 please contact: Michael Schlotterbeck: Phone: 215-283-1291 • Fax: 215-283-1626 • e-mail: earthfest@temple.edu

### **SUSTAINABILITY CONFERENCE • APRIL 22, 2003 • 8 A.M. TO 4 P.M.**

"The Ecological, Economic, Cultural, and Intellectual Implications of Sustainability." Scholars of the humanities and social sciences will meet informed practitioners on the front lines of ecological restoration, land use planning, community revitalization, and the physical sciences to facilitate meaningful dialogue regarding issues of sustainability. The conference, which will include a variety of guest speakers and panel discussions, is sponsored by the Center for Sustainable Communities at Temple University Ambler and the Temple University Intellectual Heritage program. Conference registration: \$85. Conference registration for students: \$20. Includes a continental breakfast and a buffet lunch. For more information, please contact Susan Spinella at 215-283-1307, susan.spinella@temple.edu or visit [www.csc.temple.edu](http://www.csc.temple.edu)

### **COMMENCEMENT • MAY 22, 2003 • 10 A.M.**

The Temple University Class of 2003 will have its day in the sun beginning at 10 a.m. at the Liacouras Center. The Ambler Commencement Luncheon for graduates and their families will be held at the Liacouras Center at 11:30 a.m. All are welcome to join a special diploma ceremony for Landscape Architecture and Horticulture graduates at 3 p.m. in the Ambler campus Formal Gardens.

### **AMBLER COLLEGE ALUMNI JUNE HOMECOMING • JUNE 8, 2003 • 1 P.M.**

Join in this summer tradition. Luncheon and lecture in Bright Hall Lounge will be followed by a plant auction. The event is \$12 per person. The RSVP deadline is May 26. For more information, call or e-mail Claire Whiting at 215-482-0722 or [ambleralumni@earthlink.net](mailto:ambleralumni@earthlink.net).

### **FALL CLASSES BEGIN • SEPTEMBER 2, 2003**

### **AMBLER CAMPUS REUNION • OCTOBER 2003**

This fall, return to campus for a special reunion for Ambler campus residents during the years of 1979 through 1984. Reminisce with old friends, and make new ones, while you share your memories of living on the Ambler campus. The date and location of this event will be announced in the coming months. For more information, please contact event organizer Judy Dinan Evans at [jacian@pdt.net](mailto:jacian@pdt.net).

### **TEMPLE HOMECOMING • OCTOBER 11, 2003**

Cheer on the Temple Owls as they take on Boston College at the 2003 Homecoming Celebration. There will be events at the Ambler Campus and Main Campus leading up to the game. Be sure to visit [www.ambler.temple.edu](http://www.ambler.temple.edu) for Homecoming event announcements.

**Check out more than one hundred non-credit classes, including courses in the master home gardener program and horticulture, available at Ambler and Fort Washington campuses. Just visit [www.ambler.temple.edu](http://www.ambler.temple.edu) and click on non-credit programs, or call 215-283-1304 for the latest brochure.**

**Read this  
newsletter  
online!**

**Visit [www.ambler.temple.edu](http://www.ambler.temple.edu)**

## Advances in Research

*continued from page 4*

### **Pauline Hurley-Kurtz, Associate Professor of Landscape Architecture and Horticulture:**

Professor Hurley-Kurtz will present a paper on her innovative landscape designs for the new Irish Memorial in Philadelphia at the EDRA conference. The Irish Memorial, at Chestnut and Front Streets near Penns Landing, pays tribute to each aspect of An Gorta Mor, or the Great Hunger – focusing equally on the starvation of the Irish people, the passage by sea on boats often referred to as "coffin ships," and their entrance to a new land.

### **Dr. John Sorrentino, Coordinator of Economics at Temple University Ambler:**

Dr. Sorrentino is writing five short pieces for "The Encyclopedia of Capitalism." The topics are: Energy, Game Theory, John D. Rockefeller, OPEC, and Partial/General Equilibrium. This three-volume work is under the general editorship of Syed B. Hussain, Ph.D., University of Wisconsin-Oshkosh.

### **Dr. Nora Newcombe, Coordinator for Psychology at Temple University Ambler and Dr. Kathy Hirsh-Pasek, co-director, Temple University Ambler Infant Lab:**

The Temple University Ambler Infant Lab, under the direction of Dr. Nora Newcombe and Dr. Kathy Hirsh-Pasek, studies a large range of ages, looking at such diverse areas as how infants code the location of objects, how toddlers learn verbs, and how young children remember visual displays. Dr. Newcombe conducts studies in infant and toddler spatial and memory development, and Dr. Hirsh-Pasek investigates early language development.

### **Dr. James W. Hilty, Coordinator of History, Temple University Ambler:**

Dr. Hilty, a nationally recognized historian on the presidency, is currently researching and writing an essay on President Bill Clinton for the Encyclopedia of American Studies Online. In February, Dr. Hilty delivered the inaugural lecture in Temple University Provost Ira Schwartz's "Provost Lecture Series," entitled "The Truckle-Down Theory of Political Leadership: Observations on the Condition of Leadership and Followership in Recent U.S. History."